



Introduction of Next-Generation-Sequencing technology in (hemato-) oncology in the Belgian healthcare system

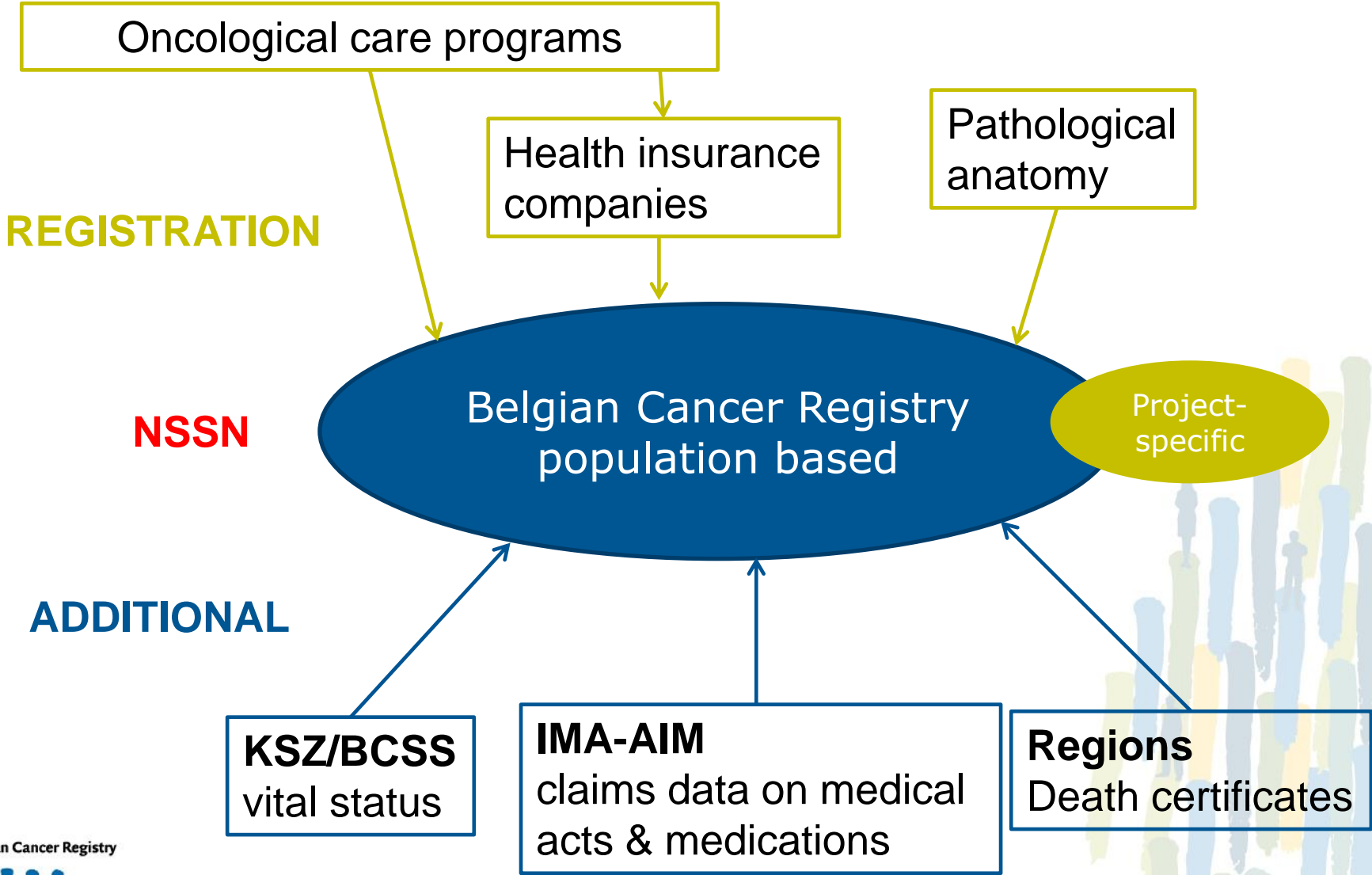
Datamanagement

November 7th, 2017 - Brussels

www.kankerregister.org | www.registreducancer.org



From data input ...



Datasources

104 Hospitals

100,000 records/year

Registration form



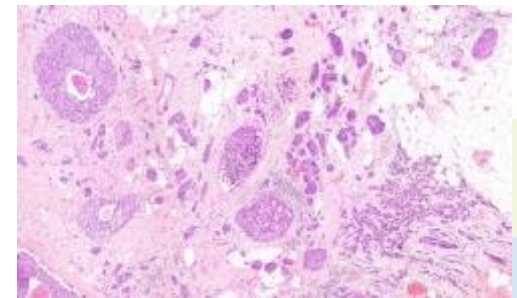
DATA TRANSFER

Belgian Cancer Registry



84 Laboratories for pathological anatomy

650,000 records/year



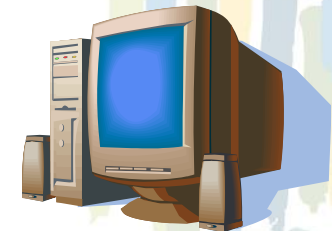
Health Insurance Companies

750,000 records/year

MOC-COM form

Historical database

1,500,000 (pre) invasive tumours



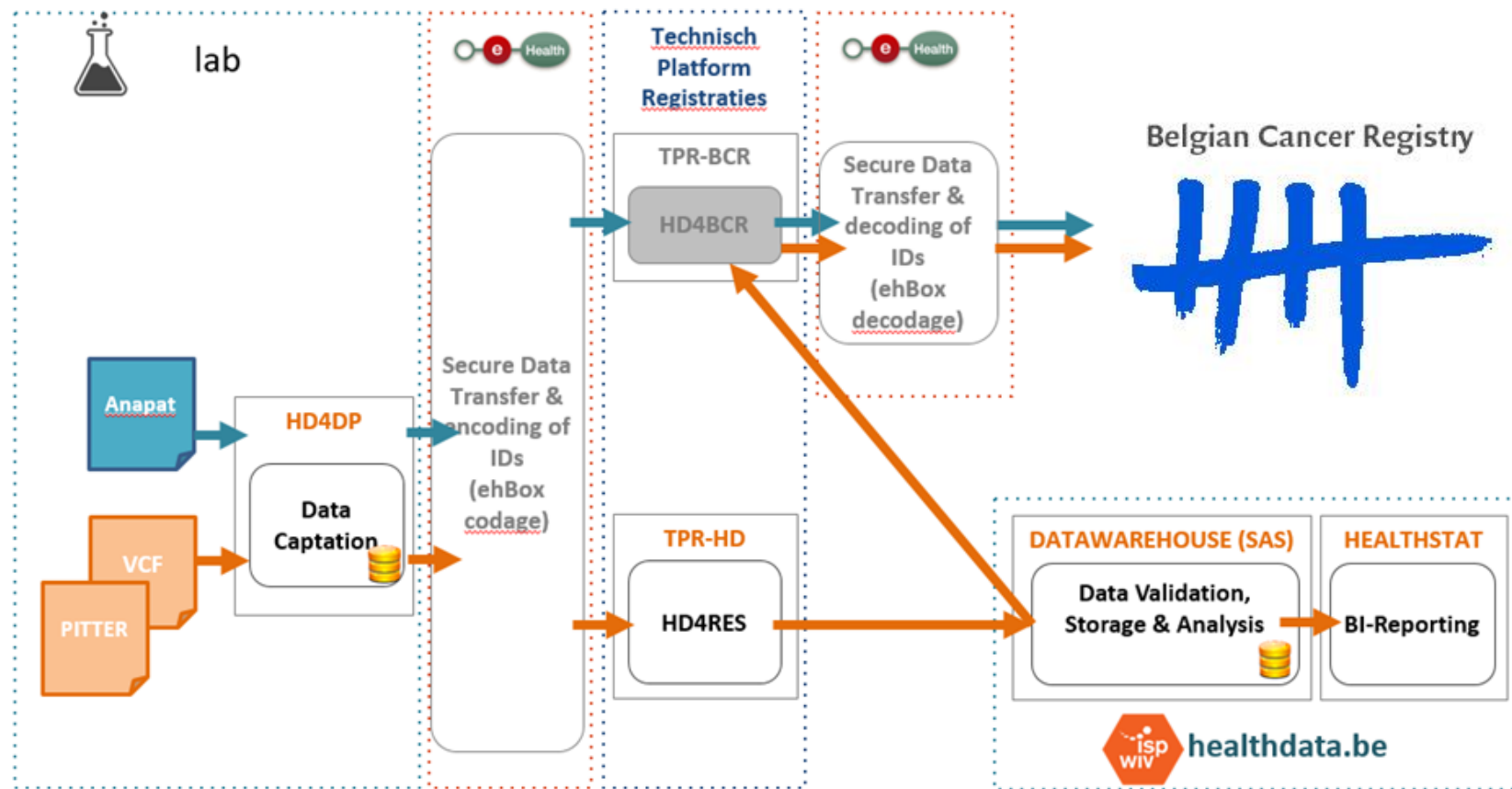
Belgi

Laboratories for pathological anatomy

- Good collaboration with pathologists
- Structured dataset in accordance to international guidelines and protocols
 - Datacollection in batch through extracts
- As from 1/1/2018 through Healthdata.be platform
- Double delivery through batch remains compulsory until exhaustivity and quality of data can be guaranteed
- Business logic at the BCR



Datamanagement NGS and molecular tests



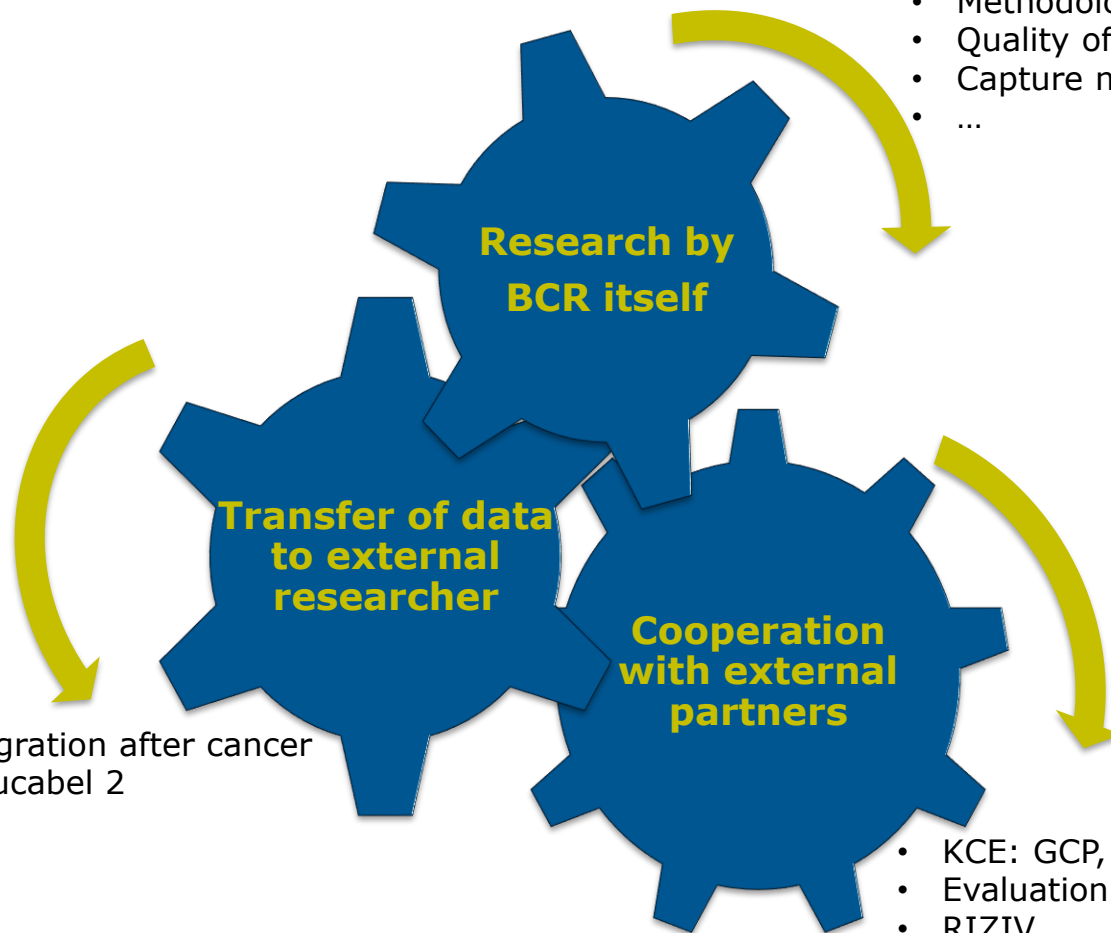
BCR essential partner in the introduction of NGS technology in (hemato-) oncology in the Belgian healthcare system



Belgian Cancer Registry



... To data output



- Cancer Burden - Epidemiology
- Methodology
- Quality of Care, volume-outcome
- Capture molecular data
- ...

- WIV CaCe: Re-integration after cancer
- WIV: Nucabel 1, Nucabel 2
- IMA
- ...

- KCE: GCP, HTA
- Evaluation screening programmes
- RIZIV
- RIZIV/CaCe: NGS
- IMA
- WIV-CaCe
- ...

