

healthdata.be

# Management of NGS data or tests in oncology

2nd Symposium “ Introduction of the Next-Generation-sequencing technology in routine clinical analysis in the Belgian healthcare “

2017.11.07, Passage 44, Brussels





AP1 >

GMD = EMD => Sumehr



AP2 >

DPI hospitalier



AP3 >

Schéma de médication



AP4 >

Prescription électronique



AP5 >

Partager les données via le système hubs & metahub pour les hôpitaux généraux et universitaires



AP6 >

Partager afin de Collaborer



AP7 >

Etablissements psychiatriques et autres et système hubs & metahub



AP8 >

Installation d'un Instrument d'Évaluation uniforme (BeIRAI)



AP9 >

"Incitants à l'utilisation"



AP10 >

Accès aux données par le patient (PHR)



AP11 >

Communication



AP12 >

Formation et soutien ICT des dispensateurs de soins



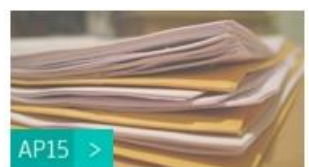
AP13 >

Standards et politique de terminologie



AP14 >

MyCareNet



AP15 >

simplification administrative



AP16 >

Traçabilité des implants et des médicaments



AP17 >

Utilisation généralisée de la eHealthBox et des données de dispensateurs de soins disponibles dans CoBRHA



AP18 >

Inventaire et consolidation des registres



AP19 >

Mobile Health



AP20 >

Gouvernance, implémentation et monitoring e-Santé



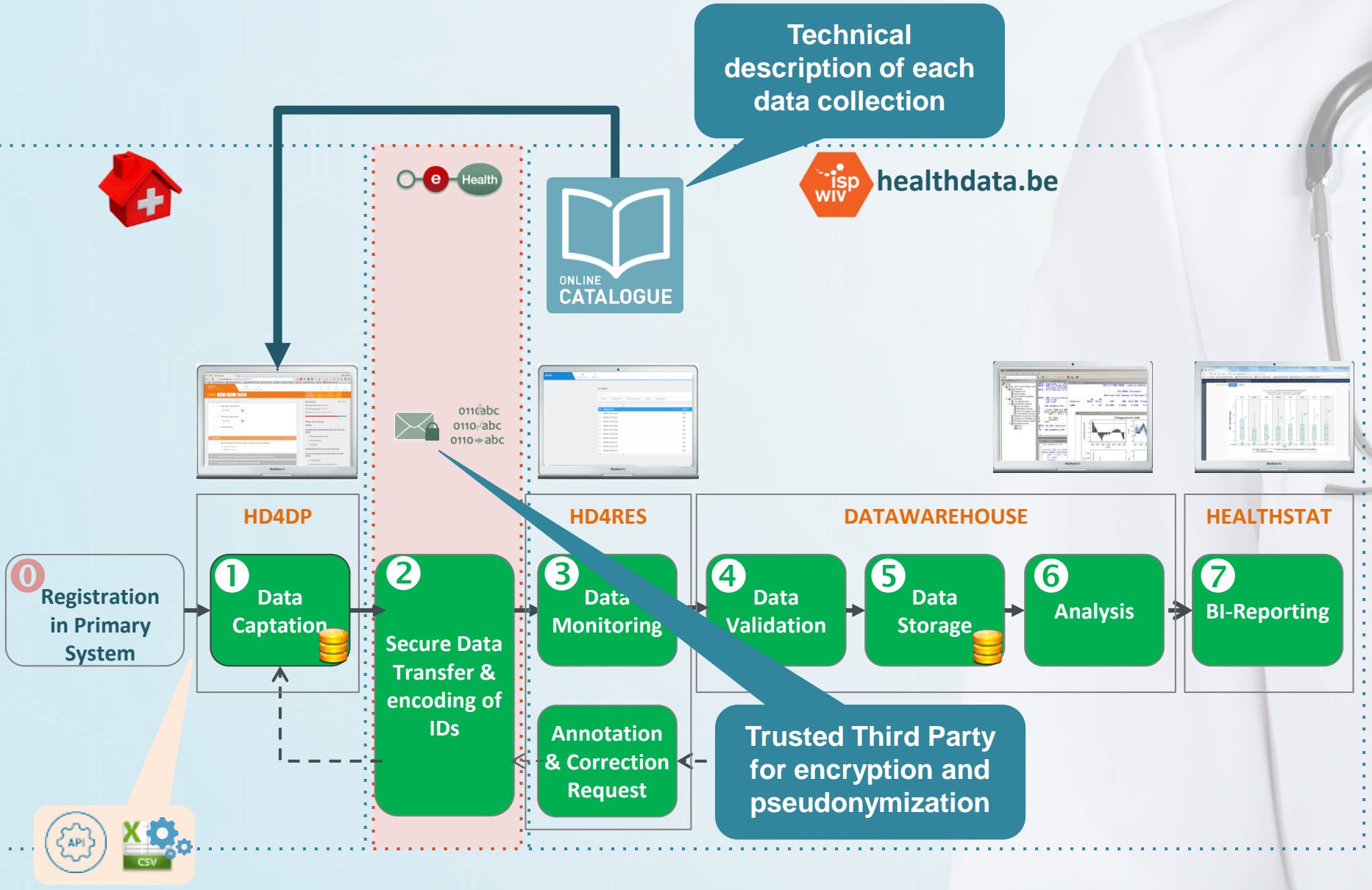
```
TCGGGGTTCGAGTTGTAATTTGTAGAGGATGCTTC  
CAGCTCAAATTTGAAATCTGGCTCCTTCGGGGTCC  
TACGTGTGCCTACTGAGTTCCTGGAACGGGACCC  
SGTACGGGTGCCTACTGAGTTCCTGGAACGGGACCC
```

**Roadmap “Next Generation Sequencing”** started Q1 2016:  
Main focus of project = **quality of NGS testing (KC)** , secondary focus on **epidemiology (BCR)**

**Precision Belgium** project by the Belgian Society of Medical Oncology (BSMO) : in close collaboration with project team Roadmap “Next Generation Sequencing”: VCF-files will be used for **inclusion patients in existing and new clinical trials of the BSMO.**

**Predictive Tests For A Therapeutic Response (PITTER):** Main focus of project to collect epidemiological and outcome data on reimbursed tests and medicines, in order to **assess and modify national recommendations and reimbursement policies.**

# Healthdata.be at a glance





Sectoraal Comité van de Sociale Zekerheid en van de Gezondheid  
Afdeling "Gezondheid"

SCSZG/15/023

**BERAADSLAGING NR. 15/009 VAN 17 FEBRUARI 2015 BETREFFENDE DE  
GENERIEKE METHODE VOOR DE UITWISSELING VAN GECODEERDE  
PERSOONSgegevens DIE DE GEZONDHEID BETREFFEN IN HET KADER  
VAN HEALTHDATA.BE EN HEALTHSTAT.BE**

De afdeling gezondheid van het Sectoraal Comité van de Sociale Zekerheid en van de  
Gezondheid (hierna "het Sectoraal Comité" genoemd),

Gelet op de wet van 15 januari 1990 *houdende oprichting en organisatie van een  
Kruispuntbank van de Sociale Zekerheid*;

Gelet op de wet van 8 december 1992 *tot bescherming van de persoonlijke levenssfeer  
ten opzichte van de verwerking van persoonsgegevens*;

Gelet op de wet van 21 augustus 2008 *houdende oprichting en organisatie van het*

**Installation Complete**

*i* Installation is complete. You need to restart the computer in order to use the new installation.

[Restart Now](#)



**hospitals**  
**100% (of 117)**



**Lab genetics**  
**100% (of 9)**



**Lab Ana Path**  
**92% (of 87)**



**Lab Clin Bio**  
**88% (of 150)**



# Data Collections

## Final

- Amputation - Reimbursement of implants that allow the fixation of an external prosthesis
- BCFR - Belgian Cystic Fibrosis Registry
- BCFRecode - Recoding identifiers for BCFR
- BCR - Belgian Cancer Registry
- BEWSD - Belgian Early Warning System for Drugs
- BNMDR - Belgian Neuromuscular Disease Registry
- CRRD - Central Registry for Rare Diseases
- Epilabo - Sentinel Laboratories Infection Diseases
- HCV - HCV
- HIV\_Cohort - HIV\_Cohort
- HIV\_Incidence - HIV Incidence
- HIV\_VL - HIV Viral Loads
- IQECAD - Initiative for Quality Improvement and Epidemiology in Children and Adolescents with Diabetes
- IQECAD\_Recode - Recoding identifiers for IQECAD

**DCD's Final: n = 28**  
**DCD's draft: n = 12**

**Data Collection Definitions (DCD's): list view**

IQEDFoot - Initiative for Quality improvement and Epidemiology in Multidisciplinary Diabetic Foot Clinics



# Next Generation Sequencing (NGS)

version: v1.0 startdatum: 01/08/2016  
status: actief

How to create a CSV file for this data collection?  
View in demo environment

- Volledig Zicht
- CSV Kolomnamen
- Validation rules
- Referentielijsten
- Computed expressions
- Bijkomende informatie
- CSV extract

## Inhoudstafel

- Begin van pagina
- Identificatiecode van
- Zorgverlener
- Medische gegevens
- Laboratoriumgegevens
- Attachments

## Collections

Finals

# 1 Identificatie

## Rijksregisternummer v

### Technical specs

CSV kolomnaam:  
Verplicht:

### Clinical building block mapping (ir

Concept:  
Gegevenselement:

### Validatie

De geldigheid van het rijksregis

### Velden

#### Intern patiënt ID

Hulp  
Dit veld kan worden gebruik  
Integratie is tussen HD4DP  
versijdt worden en basis

# Precision Treatment (Precision\_Treatment)

version: v1.0 startdatum: 14/11/2016  
status: actief  
Unieke ID: Patient ID and treatment start date

How to create a CSV file for this da  
View in demo environment

- Volledig Zicht
- CSV Kolom

## Inhoudstafel

- Begin van pagina
- Identificatie
- Behandeling

## Collections

# 1 Identificatie

# Predictive Tests For A Therapeutic Response (PITTER)

version: v1.0 startdatum: 28/08/2017  
status: actief

How to create a CSV file for this data collection?  
View in demo environment

- Volledig Zicht
- CSV Kolomnamen
- Validation rules
- Referentielijsten
- Computed expressions
- Bijkomende informatie
- CSV extract



#### Intern patiënt ID

Hulp

Hulp

This number will be attributed automatically.

tekst





Welcome to the demo page of healthdata.be, where you can access demo versions of the healthdata.be software for data providers and researchers.

## HD4DP

for data providers

The HD4DP software is used by the data providers (medical professionals in hospitals, laboratories, individual practices, ...) for data collection. This software is installed locally at the data provider. This demo environment is an online, production-like version and allows you to get familiar with the user interface of the data collection software. You can create registrations and submit these to the HD4RES demo environment. It is also possible to test the CSV upload, but it is not possible to test the automatic CSV upload or API.

You can log into the HD4DP demo environment with username 'guest' and password 'guest'. You can access the different registries that are currently available in production. For more information about the HD4DP software, please have a look at this [video](#).

➤ [Discover HD4DP](#)

## HD4RES

for researchers

The HD4RES software is used by the researchers for follow-up of their data collections and for managing the data collection definitions (i.e. the questions of the registry).

The demo environment allows the researchers to get familiar with the user interface of their data collection follow-up software. It is possible to consult registrations that were submitted with the HD4DP demo environment and to request corrections for these registrations.

The log-in details for the HD4RES demo environment are: username 'guest' and password 'guest'.

It is also possible to test the setup of a new registry on the HD4RES demo environment. To be able to do so, click on the HD4RES link below and then click on the 'Request account' link. A dedicated user will then be created for you on this demo environment, allowing you to test the creation of your own registry on the healthdata software. For more information on how to test the creation of a new

**DEMO environment: main portal**

NGS v1.0

Inhoudstafel

- 1 Identificatiecode van de patiënt
- 2 Caregiver
- 3 Medische gegevens
- 4 Laboratory data
- 5 Attachments

Samenvatting

### 1 - Identificatiecode van de patiënt

Rijksregisternummer van de patiënt \*

i Intern patient ID

i Naam \*

i Voornaam \*

Geboortedatum \*

Geslacht \*

Overleden ?

### Voortgang

Validatiefouten (x)

Geen validatiefouten

### Verplichte velden (\*) 12

- Rijksregisternummer van de patiënt: verplicht veld
- Naam: verplicht veld
- Voornaam: verplicht veld
- Geboortedatum: verplicht veld
- Geslacht: verplicht veld
- Woonplaats: verplicht veld
- Land van verblijf: verplicht veld
- Incidence date: verplicht veld
- Primary tumor localization: verplicht veld
- Stadium: verplicht veld
- Sample type on which the test was executed: verplicht veld
- VCF file: verplicht veld

### Validatiewaarschuwingen (!)

Geen validatiewaarschuwingen



**Related Articles**

- Overview technical documentation
- Overview of the HD4DP application
- Registration API

[< Back to search results](#)

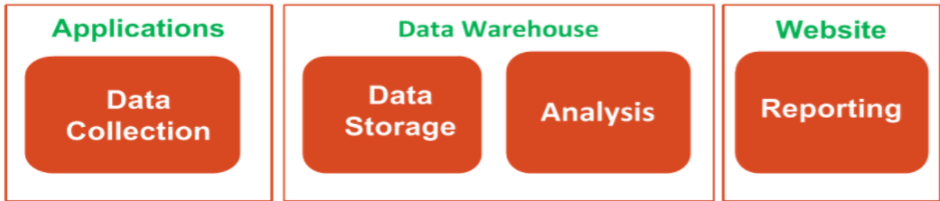
## Overview of the documentation

### Support article

10/23/2017 9:47 AM  
Overview of the documentation

### The Data Warehouse project for Healthdata.be

[Data Providers](#) (hospitals, medical specialists, general practitioners, labs...) spend a lot of time sending data. By giving the possibility to look at their data or compare their own data with an average we can help them continue their efforts.



The project consists of **3 major parts**:

**Healthdata.be support center (documents, videos, FAQ, support request forms, contact details, ...)**

## Roadmap NGS



## PRECISION Belgium

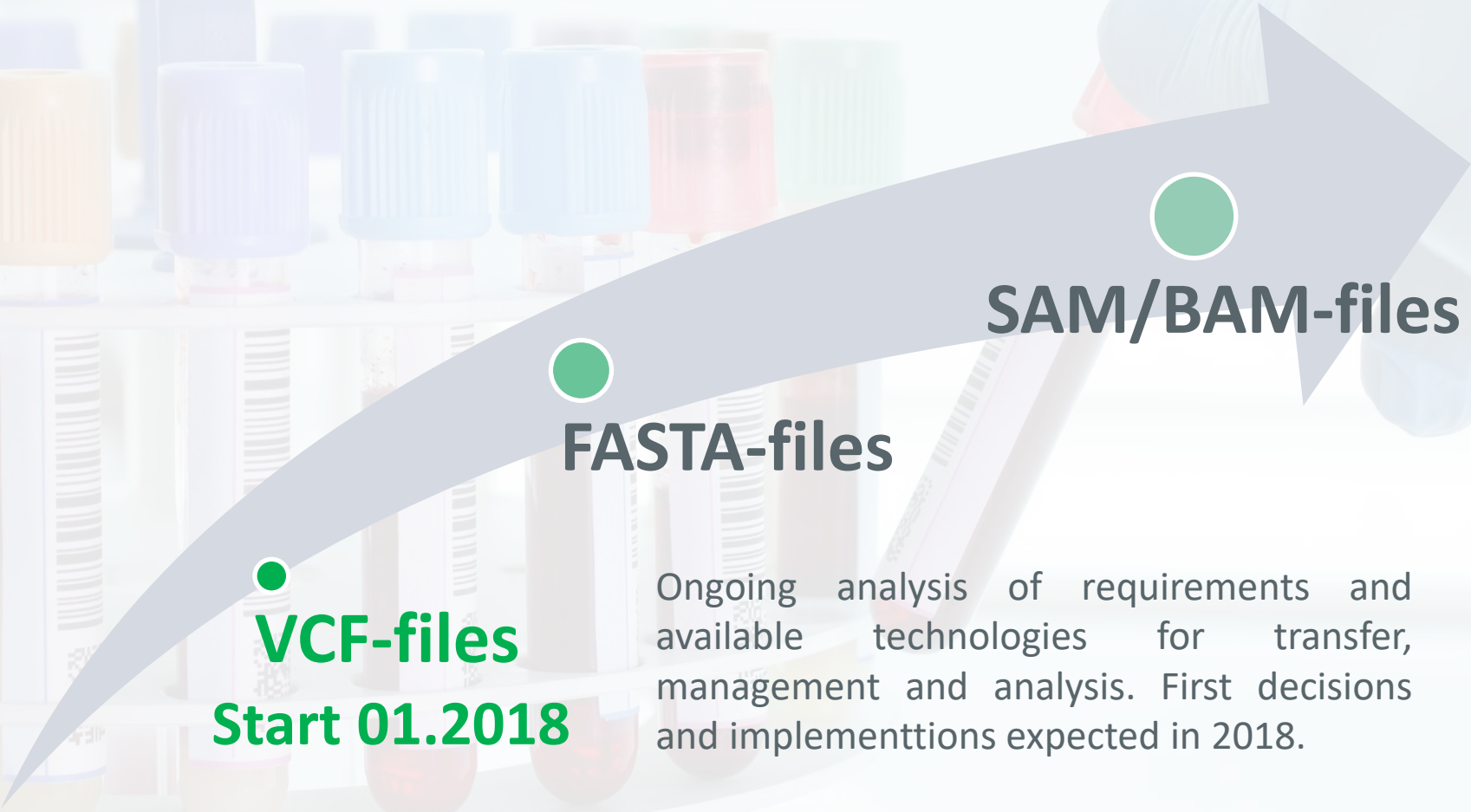


## PITTER





# Think big, start small



● **VCF-files**

**Start 01.2018**

● **FASTA-files**

● **SAM/BAM-files**

Ongoing analysis of requirements and available technologies for transfer, management and analysis. First decisions and implementations expected in 2018.





# Q&A



[www.healthdata.be](http://www.healthdata.be)



[healthdata@wiv-isp.be](mailto:healthdata@wiv-isp.be)



[healthdata be](https://www.linkedin.com/company/healthdata-be)



[@healthdatabe](https://twitter.com/healthdatabe)

