

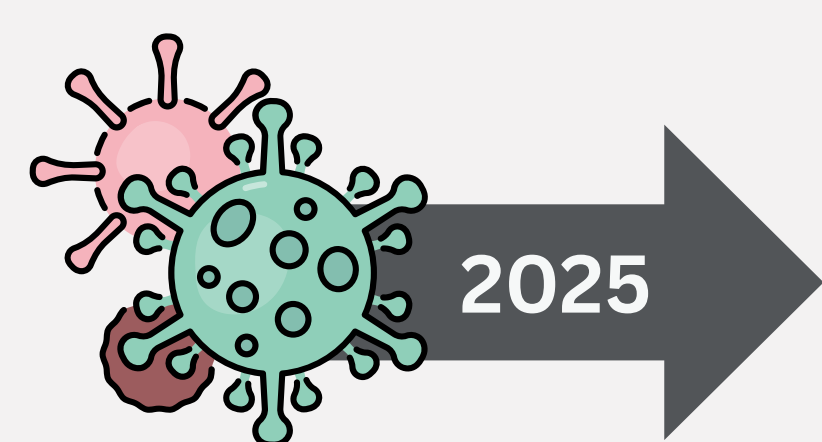
# Strengthening Surveillance of Infectious Diseases in Belgium

## BE-SURVID: From COVID-19 to any other pathogen

A. Van Laer<sup>1</sup>, P. Hubin<sup>1</sup>, R. Brondeel<sup>1</sup>, J. van Loenhout<sup>1</sup>, Members of the BE-SURVID initiative<sup>1,2,3</sup>, K. Blot<sup>1</sup>, D. Van Cauteren<sup>1</sup>, H. Masset<sup>1</sup>

<sup>1</sup> Service of Epidemiology of Infectious Diseases; <sup>2</sup> Service of Healthdata.be; <sup>3</sup> Service of Health Services Research

### BACKGROUND



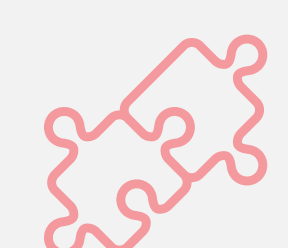
The COVID-19 pandemic highlighted the need for stronger infectious disease surveillance.

**BE-SURVID** enhances continuous, digital surveillance at the **general practitioner (GP), laboratory and hospital levels**, which subsequently allows linking of key health data to improve monitoring, impact and response to future health threats.

### OBJECTIVES



Enhanced **digitalized** surveillance



Promote **integrated** surveillance



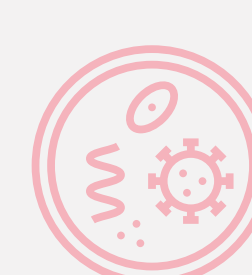
Establish robust **data governance**



Improve **early warning**



Ensure **sustainability** and long-term impact



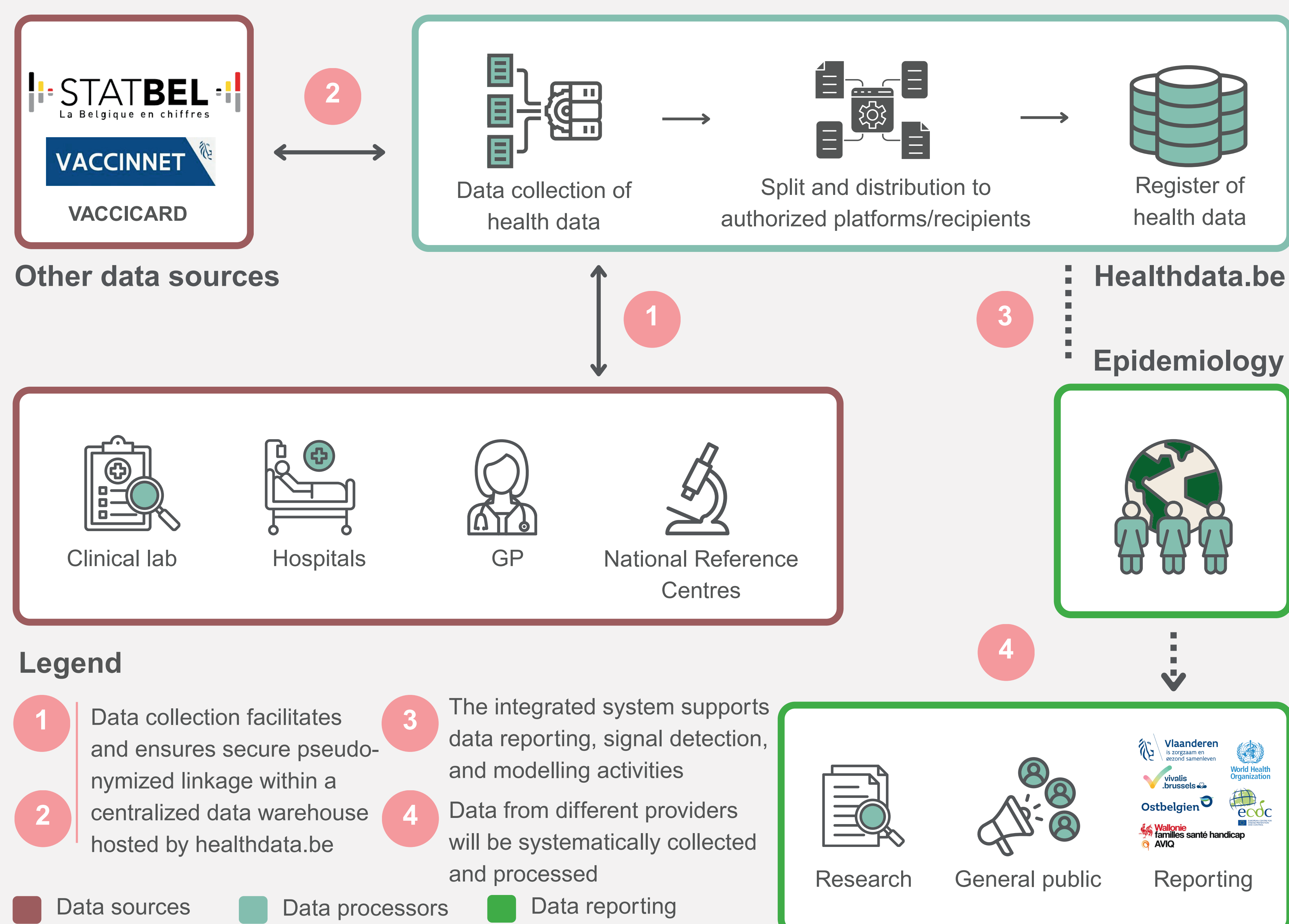
Applied for **respiratory- and tick-borne** pathogens, HIV, ...

### MORE INFO?

Scan the QR code for the latest updates



### METHODS



### RESULTS

#### Short-Term

- Pilot digital data flows
- Draft data governance framework
- Initial data linkage set up

#### Mid-Term

- Different surveillance systems operational
- Integrated data analysis (linkage/modelling)
- Early warning tools operational

#### Long-Term

- Sustainable, digitalized surveillance systems
- Real-time, interoperable data flows
- Legal and technical alignment



**RAPID OUTBREAK DETECTION**



**STRENGTHENING PREPAREDNESS**

### CONCLUSION

BE-SURVID supports the **digitalization and interoperability** of multiple surveillance networks to strengthen Belgium's infectious disease monitoring. While focusing on respiratory infections, it also enhances surveillance for high-priority diseases like HIV and tick-borne infections. Through continuous data integration and automated analysis, BE-SURVID lays the groundwork for a **resilient, sustainable public health surveillance system**.