

Building an integrated dashboard for population health management and tailored integrated care

23 November 2023



Health
Food Chain Safety
Environment

Ann Marie Borg

External public health expert and national coordinator for Belgium for the EU TSI project 'EU health resources hub'

Outline

1. An inter-federal plan for integrated care
2. What is population health management (PHM) and why it matters
3. A dashboard for the implementation of PHM at locoregional level in Belgium
4. Take home messages

1. An Inter-federal Plan for Integrated Care

- **Signature of a Memorandum of Understanding** between federal and federated entities greenlighting the launch of an Inter-federal Plan for Integrated Care in Belgium – 8 November 2023
- **Vision:** evolution to a health and wellbeing system based on person- and population-centered care with collaboration between health and care providers and multidisciplinary teams at all levels.



1. An Inter-federal Plan for Integrated Care

Why is this recent success a positive development for health at a local level?

- Involvement of local communities through working within a territorial approach – *“It is essential to work in a decentralized way and as close to the citizen as possible from a population-based approach”* (MoU)
- For integrated care to truly anchor itself in practice, concrete actions will be undertaken by loco-regional partnerships (“meso level”) that facilitates the micro level and operates within macro level policies eg. care councils in frontline areas, loco-regional health organizations, primary care zones.
- The ‘meso level’ can use Population Health Management (PHM) to identify health needs

2. What is population health management (PHM) and why it matters ?

Population health management

“A people-centred, data-driven and proactive approach to managing the health and well-being of a defined population, considering the differences within that population and their social determinants of health.”

(WHO Europe 2023)

PHM enables:

- authorities and local teams to understand health trends and proactively manage care, adapting policies and interventions accordingly
- local health and care partners to deliver care that is tailored to the needs of a defined population and as close to home as possible.

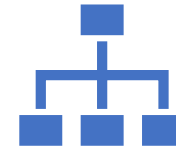
2. What is population health management (PHM) and why it matters ?



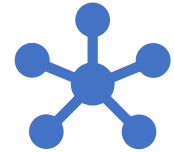
Belgium's evolution to a health and wellbeing system and population-centered organisation of care



New inter-federal Integrated Care plan to fully embed integrated care at all levels in Belgium.



PHM is central to the successful implementation of integrated care



Data integration and digital solutions as key enablers for implementing a PHM strategy

3. A dashboard for the implementation of PHM at locoregional level in Belgium

EU TSI project “EU health resources hub”

Sep 2022- Sep 2024

- Multi-country project: Belgium, Austria and Slovenia
- 2 work streams: Making the case for investment in health
Strengthening health authorities’ capacity to access EU funds
- 3 pilot cases identified in each Member State based on national priorities and health care reform plans
- Belgium’s selected pilot case: development of a dashboard to support PHM

3. A dashboard for the implementation of PHM at locoregional level in Belgium

- Needs-driven
- Builds on existing examples
- Looks at data sets available and identify gaps
- Links and integrates a current fragmented health data landscape
- Provides a user-centered interface



3. A dashboard for the implementation of PHM at locoregional level in Belgium

"Population health management is 10% data and 90% culture change"

- IT tool as an enabler
- Health data into an integrated dashboard is a means to an end and not an end in itself
- Requires innovative tools/digital transformations but also the right mindset to welcome a population health approach to care
- Shape the system and care to the people rather than shaping the people to care services offered
- As per agreement 7 in the MoU: the federal authority and the federated entities plan to develop a population management strategy as part of the implementation of the IFP for integrated care

4. Take home messages

- While policy shapes and sets the priorities for the delivery of population health, effective local engagement and leadership is vital.
- Communities and neighbourhood teams know their population best and can translate up-to-date health data into tailored care interventions according to the needs of their population.
- New policies such as the Inter-federal Plan for integrated care provide a strong foundation and a clear direction to deliver a population health approach but change on the ground will be driven by locoregional teams as close to the people as possible.



“...population health management can strengthen health systems’ contribution to building healthier, safer and more cohesive societies”.

(WHO Europe, 2023)