



WETENSCHAPPELIJK INSTITUUT  
VOLKSGEZONDHEID  
INSTITUT SCIENTIFIQUE  
DE SANTÉ PUBLIQUE

# Surveillance of ICU - Acquired Infections

## National Feedback Report

### Risk Factor Indicators

### Year 2017

Scientific Institute of Public Health  
Direction of Public Health and Surveillance  
National Surveillance of Hospital Infections (NSIH program)

14, Juliette Wytsmanstraat  
1050 Brussels - Belgium  
<http://www.wiv-isp.be>  
<http://www.nsih.be>

Het project wordt financieel ondersteund door  
*KB van 19 juni 2007 betreffende de vaststelling en de vereffening van het budget van financiële middelen van de ziekenhuizen*

Le projet est financièrement soutenu par  
*AR du 19 juin 2007 relatif à la fixation et à la liquidation du budget des moyens financiers des hôpitaux*

Further information on this report:  
Mr. Karl Mertens  
Tel +32 2 642 5795  
[karl.mertens@wiv-isp.be](mailto:karl.mertens@wiv-isp.be)



## List of Tables

1	Missing Admission variables . . . . .	2
2	Admission Characteristics (a) . . . . .	3
3	Admission Characteristics (b) . . . . .	4
4	Admission Characteristics (c) . . . . .	5
5	Admission Characteristics (d) . . . . .	6
6	Daily Invasive Device exposure indicators . . . . .	7
7	Missing SOFA Scores . . . . .	8
8	Daily SOFA score indicators . . . . .	9
9	Daily SOFA score indicators . . . . .	10
10	Antibiotic Use Population (aggregated) . . . . .	11
11	Antibiotic Use Distribution (aggregated) . . . . .	12
12	Antibiotic Use (exhaustive) (a) . . . . .	13
13	Antibiotic Use (exhaustive) (b) . . . . .	14
14	Antibiotic Use (exhaustive) (c) . . . . .	14
15	Pneumonia and Admission Exposure (a) . . . . .	15
16	Pneumonia and Admission Exposure (b) . . . . .	16
17	Pneumonia and Admission Exposure (c) . . . . .	17
18	Pneumonia and Admission Exposure (d) . . . . .	18
19	Bloodstream Infection and Admission Exposure (a) . . . . .	19
20	Bloodstream Infection and Admission Exposure (b) . . . . .	20
21	Bloodstream Infection and Admission Exposure (c) . . . . .	21
22	Bloodstream Infection and Admission Exposure (d) . . . . .	22
23	Pneumonia and Invasive Device Exposure (a) . . . . .	23
24	Pneumonia and Invasive Device Exposure (b) . . . . .	24
25	Pneumonia and Invasive Device Exposure (c) . . . . .	25
26	Bloodstream Infection and Invasive Device Exposure (a) . . . . .	26
27	Bloodstream Infection and Invasive Device Exposure (b) . . . . .	27
28	Bloodstream Infection and Invasive Device Exposure (c) . . . . .	28
29	Pneumonia and SOFAScore (a) . . . . .	29
30	Pneumonia and SOFAScore (b) . . . . .	30
31	Bloodstream Infections and SOFAScore (a) . . . . .	31
32	Bloodstream Infections and SOFAScore (b) . . . . .	32
33	Pneumonia and Antibiotic Use . . . . .	33
34	Bloodstream Infection and Antibiotic Use . . . . .	34
35	Standardized Pneumonia and Bacteremia Rates . . . . .	35
36	Nosocomial Pneumonia and Bacteremia risk score distribution . . . . .	36

## List of Figures

1	Evolution: SAPS II Score Median . . . . .	37
2	Evolution: Death / DNR (%) . . . . .	37
3	Evolution: Intubation days / 1000 patientdays . . . . .	38
4	Evolution: CVC days / 1000 patientdays . . . . .	38
5	Evolution: Any AB utilization days / 1000 patientdays . . . . .	39
6	Benchmark: Standardized Pneumonia Ratio . . . . .	39
7	Benchmark: Ventilator Associated Pneumonia versus Standardized Pneumonia Ratio . . . . .	40
8	Benchmark: Standardized Bacteremia Ratio . . . . .	40
9	Benchmark: Catheter Associated Bacteremia versus Standardized Bacteremia Ratio . . . . .	41



Table 1: Missing Admission variables

variable	L1 <sup>a</sup>	L2 <sup>a</sup>	Ls <sup>a</sup>	Req <sup>a</sup>	# <sup>a</sup>	% <sup>a</sup>	p10	p25	p50	p75	p90
discharge date from the ICU	V	0	0	M	0	0.00	0.00	0.00	0.00	0.00	0.00
discharge status	V	0	0	R	3	0.12	0.00	0.00	0.00	0.20	0.71
discharge date from the hospital	V	0	0	O	230	9.27	0.00	0.00	0.00	26.59	100.00
discharge status from the hospital	V	0	0	O	230	9.27	0.00	0.00	0.00	26.59	100.00
SAPS II score	V	0	0	R	5	0.20	0.00	0.00	0.00	0.62	1.59
APACHE II score	V	0	0	O	5	0.20	0.00	0.00	0.00	0.62	1.59
PRISM score	V	0	0	O	9	0.36	0.00	0.00	0.00	1.15	1.99
patient origin	V	0	0	O	8	0.32	0.00	0.00	0.00	0.00	3.19
type of admission	V	0	0	R	4	0.16	0.00	0.00	0.00	0.00	1.59
trauma	V	0	0	R	2	0.08	0.00	0.00	0.00	0.00	0.80
impaired immunity	V	0	0	O	1	0.04	0.00	0.00	0.00	0.00	0.40
antimicrobial treatment within 48h around admission (<->48h)	V	0	0	R	4	0.16	0.00	0.00	0.00	0.18	1.20
acute coronary care	V	a	a	R	8	0.32	0.00	0.00	0.00	0.53	1.99
surgery in 30 days before admission	V	a	a	R	1	0.04	0.00	0.00	0.00	0.00	0.40
surgery in 30 days before admission	V	a	a	R	0	0.00	0.00	0.00	0.00	0.00	0.00
Glasgow coma score, estimated	V	a	a	O	349	14.06	0.00	0.00	0.00	53.01	100.00
Glasgow coma score, measured	V	a	a	O	402	16.20	0.00	0.00	0.00	62.41	100.00
total patient variables	V	a	a	O	1261	12.08	7.88	7.88	13.03	23.75	23.75

<sup>a</sup> L1 = level 1 variable (denominator-based surveillance) ; L2 = level 2 variable (patient-based surveillance) ; L2s = level 2 suboption (0 = basic level 2 variables a = extra patient admission and day by day variables, b = central vascular catheter follow-up, c = antimicrobial treatment follow-up); Req: M = mandatory, R = Required, O = Optional # = number of missing variables; % = # / 100 eligible records



Table 2: Admission Characteristics (a)

	patients			LOS p50 <sup>a</sup>			SAPSII p50 <sup>a</sup>			Death/DNR % <sup>a</sup>									
	# <sup>b</sup>	% <sup>b</sup>		agg	p25	p50	p75	agg	p25	p50	p75	agg	p25	p50	p75				
		p25	p50													p75			
<b>Age</b>																			
≤ 40	24	4	1	4	4	4	7	4	6	6	7	25	8	24	25	8	0	0	18
40-59	104	17	14	18	20	18	7	6	6	7	7	32	22	28	40	15	13	17	19
60-69	153	25	19	27	29	27	7	6	6	8	8	36	29	36	37	13	0	14	17
70-74	75	12	10	14	15	14	8	5	8	9	9	41	29	35	46	27	0	26	35
75-79	93	15	11	13	19	13	7	4	7	11	11	39	33	37	43	16	0	15	22
≥ 80	165	27	26	27	28	28	6	4	6	6	6	45	36	43	47	19	0	20	24
unknown	0	0	0	0	0	0	0												
<b>Gender</b>																			
female	263	43	40	41	46	41	6	5	6	7	7	41	34	38	44	17	6	17	22
male	351	57	54	59	60	60	7	5	7	8	8	37	28	35	42	17	2	19	19
unknown	0	0	0	0	0	0													
<b>SAPSII score</b>																			
≤ 10	7	1	1	1	1	1	5	4	5	5	7	8	7	8	9	0	0	0	0
10-19	44	7	3	9	15	15	5	4	5	5	5	16	15	16	18	0	0	0	0
20-29	113	18	12	21	31	31	6	5	5	6	6	25	25	25	25	1	0	0	3
30-39	166	27	25	26	29	29	7	4	6	8	8	34	34	34	35	11	8	10	13
40-49	124	20	11	16	27	27	8	4	7	8	8	44	44	44	44	20	0	17	28
50-59	82	13	7	11	18	18	9	5	8	11	11	54	54	54	54	32	17	27	41
≥ 60	73	12	7	12	13	13	9	8	8	10	10	68	64	67	69	45	0	40	59
unknown	5	1	0	1	2	2	5	5	5	5	5	20	20	20	20	0	13	25	25

<sup>a</sup> LOS=median length of stay for patients admitted within this category; SAPSII=median SAPSII score for patients admitted within this category

<sup>b</sup> #=# of admissions within category; %=#/100 total admissions



Table 3: Admission Characteristics (b)

	patients		LOS p50 <sup>a</sup>						SAPSII p50 <sup>a</sup>						Death/DNR % <sup>a</sup>												
	# <sup>b</sup>	% <sup>b</sup>	agg		p25		p50		p75		agg		p25		p50		p75										
			agg	p25	p25	p75	agg	p25	p25	p75	agg	p25	p25	p75	agg	p25	p50	p75									
<b>Apache Score</b>																											
< 10	0	0	0	0	0	0	0	0	0	0	0	0	0	0	0	0	0	0									
10-19	0	0	0	0	0	0	0	0	0	0	0	0	0	0	0	0	0	0									
20-29	0	0	0	0	0	0	0	0	0	0	0	0	0	0	0	0	0	0									
30-39	0	0	0	0	0	0	0	0	0	0	0	0	0	0	0	0	0	0									
40-49	0	0	0	0	0	0	0	0	0	0	0	0	0	0	0	0	0	0									
50-59	0	0	0	0	0	0	0	0	0	0	0	0	0	0	0	0	0	0									
> 60	0	0	0	0	0	0	0	0	0	0	0	0	0	0	0	0	0	0									
unknown	614	100	100	100	100	100	100	100	100	100	100	100	100	7	5	7	7	7	40	32	36	42	17	4	18	20	
<b>Patient Origin</b>																											
other service	347	57	43	51	66	7	5	7	8	7	8	40	33	35	43	17	6	16	22								
other ICU	8	1	0	0	3	9	9	9	9	9	9	59	52	52	52	38	38	38	38								
community	216	35	28	37	53	6	5	6	7	6	7	36	31	38	41	13	2	15	16								
nursing home	35	6	4	4	9	6	4	6	7	4	7	44	34	41	46	29	0	23	50								
unknown	8	1	0	0	3	5	6	6	6	6	6	38	39	39	39	38	38	38	38								
<b>Type of Admission</b>																											
medical	457	74	60	73	92	7	5	6	8	6	8	40	31	39	42	19	5	19	24								
scheduled surgical	106	17	2	19	31	7	5	6	6	6	6	28	26	28	30	7	0	7	25								
unscheduled surgical	47	8	5	9	10	9	4	8	9	4	8	48	33	38	50	17	0	19	23								
unknown	4	1	0	0	2	7	7	7	7	7	7	43	43	43	43	50	50	50	50								

<sup>a</sup> LOS=median length of stay for patients admitted within this category; SAPSII=median SAPSII score for patients admitted within this category

<sup>b</sup> #=# of admissions within category; %=#/100 total admissions



Table 4: Admission Characteristics (c)

	patients			LOS p50 <sup>a</sup>						SAPSII p50 <sup>a</sup>						Death/DNR % <sup>a</sup>			
	% <sup>b</sup>			agg		p25		p50		p75		agg		p25		p50		p75	
	# <sup>b</sup>	p25	p50	p75	agg	p25	p50	p75	agg	p25	p50	p75	agg	p25	p50	p75	agg	p25	p75
<b>Trauma</b>																			
no	566	88	91	97	7	5	7	8	39	31	37	43	18	4	20	20			
yes	46	2	9	12	8	4	5	7	32	30	32	34	7	0	6	20			
unknown	2	0	0	1	5	5	5	5	42	42	42	42	0	0	0	0			
<b>Impaired Immunity</b>																			
no	546	89	85	90	96	7	5	6	7	36	31	35	42	15	4	15			
yes	67	11	4	9	15	9	6	8	13	48	39	48	36	0	35	39			
unknown	1	0	0	0	0	5	5	5	5	35	35	35	0	0	0	0			
<b>Antibiotic Treatment</b>																			
no	380	62	38	53	76	7	5	6	7	36	26	35	41	15	0	16			
yes	230	37	23	45	62	8	5	7	10	43	34	38	44	21	6	24			
unknown	4	1	0	0	1	5	4	5	5	36	35	36	37	0	0	0			

<sup>a</sup> LOS=median length of stay for patients admitted within this category; SAPSII=median SAPSII score for patients admitted within this category

<sup>b</sup> #=# of admissions within category; %=#/100 total admissions



Table 5: Admission Characteristics (d)

	patients										LOS p50 <sup>a</sup>					SAPSII p50 <sup>a</sup>					Death/DNR % <sup>a</sup>				
	# <sup>b</sup>					% <sup>b</sup>					agg	p25	p50	p75	agg	p25	p50	p75	agg	p25	p50	p75			
	agg	p25	p50	p75	%	agg	p25	p50	p75																
<b>Acute Coronary Care</b>																									
no	573	93	84	93	96	7	5	7	8	8	40	29	36	43	17	3	18	21							
yes	33	5	2	5	16	5	4	4	9	35	33	34	64	12	8	8	29								
unknown	8	1	0	1	2	5	5	5	5	40	19	31	43	0	0	0	0								
<b>Prior Surgery site</b>																									
no	415	68	56	69	80	7	5	6	8	8	39	33	39	43	20	5	19	25							
coronary	0	0	0	0	0	8	8	8	8	49	49	49	49	0	0	0	0								
other cardiac	2	0	0	0	1	8	8	8	8	8	8	8	8	0	0	0	0								
other thoracic	16	3	2	2	3	10	3	7	9	36	16	33	40	19	0	20	22								
other vascular	18	3	2	3	6	6	5	6	8	25	18	25	34	6	0	0	13								
abdominal	9	1	0	0	3	22	29	29	29	42	59	59	59	11	11	11	11								
neurosurgery	37	6	4	7	10	7	5	6	8	36	15	28	46	22	0	17	35								
other	117	19	8	12	30	7	5	7	7	33	30	39	42	9	0	7	19								
unknown	0	0	0	0	0	7	5	7	7	33	30	39	42	9	0	7	19								

<sup>a</sup> LOS=median length of stay for patients admitted within this category; SAPSII=median SAPSII score for patients admitted within this category

<sup>b</sup> #=# of admissions within category; %=#/100 total admissions



Table 6: Daily Invasive Device exposure indicators

invasive device	# <sup>a</sup>	rate <sup>a</sup>					
		agg <sup>a</sup>	p10	p25	p50	p75	p90
Intubation days	6126	377.8	152.8	318.2	361.9	455.9	2206.0
patients with Intubation days	279	12.4	16.0	16.0	46.2	53.2	53.2
central vascular catheter days	11445	725.0	523.6	658.7	727.0	917.3	1000.0
patients with central vascular catheter days	413	18.8	51.9	51.9	62.9	75.5	75.5
urinary catheter days	4619	783.9	649.4	649.4	683.0	871.8	871.8
patients with urinary catheter days	484	78.8	64.2	64.2	70.9	90.1	90.1
naso-oro intestinal tube days	2067	350.8	105.5	105.5	188.8	541.7	541.7
patients with naso-oro intestinal tube days	277	45.1	24.7	24.7	31.1	63.5	63.5
naso-oro intestinal tube feeding days	1852	314.3	83.1	83.1	243.4	463.9	463.9
patients with naso-oro intestinal tube feeding days	186	30.3	4.9	4.9	25.2	44.2	44.2
parenteral feeding days	967	164.1	31.5	31.5	61.8	252.7	252.7
patients with parenteral feeding days	108	17.6	2.5	2.5	7.2	31.2	31.2
invasive mechanical ventilation days	2095	355.6	0.0	0.0	378.1	394.0	394.0
patients with invasive mechanical ventilation days	262	42.7	0.0	0.0	46.2	51.8	51.8
non-invasive mechanical ventilation days	519	88.1	0.0	0.0	70.0	132.1	132.1
patients with non-invasive mechanical ventilation days	140	22.8	0.0	0.0	19.9	33.5	33.5
tracheotomy intubation days	463	78.6	0.0	0.0	71.2	94.5	94.5
patients with tracheotomy intubation days	24	3.9	0.0	0.0	2.8	6.0	6.0
re-intubation days	25	4.2	0.0	0.0	3.7	5.9	5.9
patients with re-intubation days	18	2.9	0.0	0.0	3.2	3.5	3.5

<sup>a</sup> #=number of days or patients with device exposure; rate=#/1000 patientdays (days); rate=#/100 admissions (patients)





Table 7: Missing SOFA Scores

variable	L1 <sup>a</sup>	L2 <sup>a</sup>	Ls <sup>a</sup>	Req <sup>a</sup>	# <sup>a</sup>	% <sup>a</sup>	p10	p25	p50	p75	p90
sofa score, cns		V	a	R	4721	0.00	0.00	0.00	0.00	50.00	100.00
sofa score, respiration		V	a	R	4767	0.00	0.00	0.00	0.00	50.00	100.00
sofa score, coagulation		V	a	R	4721	0.00	0.00	0.00	0.00	50.00	100.00
sofa score, cardio		V	a	R	4721	0.00	0.00	0.00	0.00	50.00	100.00
sofa score, kidney		V	a	R	4721	0.00	0.00	0.00	0.00	50.00	100.00
sofa score, liver		V	a	R	4721	0.00	0.00	0.00	0.00	50.00	100.00
total sofa variables		V	a	O	28372	60.51	0.00	0.00	100.00	100.00	100.00

<sup>a</sup> |1= level 1 variable (denominator-based surveillance) ; |2= level 2 variable (patient-based surveillance) ; L2s= level 2 suboption (0=basic level 2 variables a=extra patient admission and day by day variables, b=central vascular catheter follow-up, c=antimicrobial treatment follow-up); Req: M=mandatory, R=Required, O=Optional #=number of missing variables; %=# / 100 eligible records



Table 8: Daily SOFA score indicators

	# <sup>a</sup>	agg <sup>b</sup>	p10 <sup>b</sup>	p25 <sup>b</sup>	p50 <sup>b</sup>	p75 <sup>b</sup>	p90 <sup>b</sup>
<b>CNS score</b>							
0	908	77.5	77.5	77.5	77.5	77.5	77.5
1	136	11.6	11.6	11.6	11.6	11.6	11.6
2	62	5.3	5.3	5.3	5.3	5.3	5.3
3	36	3.1	3.1	3.1	3.1	3.1	3.1
4	29	2.5	2.5	2.5	2.5	2.5	2.5
any	1171	19.9	52.8	52.8	52.8	52.8	52.8
scores		0.4	0.4	0.4	0.4	0.4	0.4
<b>Respiratory score</b>							
0	44	3.9	3.9	3.9	3.9	3.9	3.9
1	295	26.2	26.2	26.2	26.2	26.2	26.2
2	558	49.6	49.6	49.6	49.6	49.6	49.6
3	205	18.2	18.2	18.2	18.2	18.2	18.2
4	23	2.0	2.0	2.0	2.0	2.0	2.0
any	1125	19.1	50.7	50.7	50.7	50.7	50.7
scores		1.7	1.8	1.8	1.8	1.8	1.8
<b>Coagulation score</b>							
0	888	75.8	75.8	75.8	75.8	75.8	75.8
1	112	9.6	9.6	9.6	9.6	9.6	9.6
2	111	9.5	9.5	9.5	9.5	9.5	9.5
3	38	3.2	3.2	3.2	3.2	3.2	3.2
4	22	1.9	1.9	1.9	1.9	1.9	1.9
any	1171	19.9	52.8	52.8	52.8	52.8	52.8
scores		0.3	0.4	0.4	0.4	0.4	0.4
<b>Cardiovascular score</b>							
0	850	72.6	72.6	72.6	72.6	72.6	72.6
1	67	5.7	5.7	5.7	5.7	5.7	5.7
2	8	0.7	0.7	0.7	0.7	0.7	0.7
3	199	17.0	17.0	17.0	17.0	17.0	17.0
4	47	4.0	4.0	4.0	4.0	4.0	4.0
any	1171	19.9	52.8	52.8	52.8	52.8	52.8
scores		1.0	0.7	0.7	0.7	0.7	0.7

<sup>a</sup> #=number of patientdays; 0/4/any=# of days with SOFA score=0/4/any

<sup>b</sup> 0/4=% of days with SOFA score=0/4 among days with any SOFA score; any=% of days with any SOFA score among total patientdays; scores=median score for SOFA component; agg= value obtained when pooling all participating units; p=percentiles for the distribution of participating units;



Table 9: Daily SOFA score indicators

	# <sup>a</sup>	agg <sup>b</sup>	p10 <sup>b</sup>	p25 <sup>b</sup>	p50 <sup>b</sup>	p75 <sup>b</sup>	p90 <sup>b</sup>
<b>Renal score</b>							
0	609	52.0	52.0	52.0	52.0	52.0	52.0
1	178	15.2	15.2	15.2	15.2	15.2	15.2
2	142	12.1	12.1	12.1	12.1	12.1	12.1
3	42	3.6	3.6	3.6	3.6	3.6	3.6
4	200	17.1	17.1	17.1	17.1	17.1	17.1
any	1171	19.9	52.8	52.8	52.8	52.8	52.8
scores		1.2	1.1	1.1	1.1	1.1	1.1
<b>Liver score</b>							
0	991	84.6	84.6	84.6	84.6	84.6	84.6
1	83	7.1	7.1	7.1	7.1	7.1	7.1
2	74	6.3	6.3	6.3	6.3	6.3	6.3
3	14	1.2	1.2	1.2	1.2	1.2	1.2
4	9	0.8	0.8	0.8	0.8	0.8	0.8
any	1171	19.9	52.8	52.8	52.8	52.8	52.8
scores		0.2	0.3	0.3	0.3	0.3	0.3
<b>Total score</b>							
0/1	70	6.2	6.2	6.2	6.2	6.2	6.2
2	231	20.5	20.5	20.5	20.5	20.5	20.5
3/4	305	27.1	27.1	27.1	27.1	27.1	27.1
5/6	220	19.6	19.6	19.6	19.6	19.6	19.6
7/max	299	26.6	26.6	26.6	26.6	26.6	26.6
any	1125	19.1	50.7	50.7	50.7	50.7	50.7
scores		4.7	4.7	4.7	4.7	4.7	4.7

<sup>a</sup> #=number of patientdays; 0/4/any=# of days with SOFA score=0/4/any

<sup>b</sup> 0/4=% of days with SOFA score=0/4 among days with any SOFA score; any=% of days with any SOFA score among total patientdays; scores=median score for SOFA component; agg= value obtained when pooling all participating units; p=percentiles for the distribution of participating units;



Table 10: Antibiotic Use Population (aggregated)

	Patients, # <sup>a</sup>									Patientdays, # <sup>a</sup>								
	agg	p10	p25	p50	p75	p90	agg	p10	p25	p50	p75	p90	agg	p10	p25	p50	p75	p90
patients with AB use	425	196	196	213	229	229	4839	1913	1913	2420	2926	2926	4839	1913	1913	2420	2926	2926
units with AB use	533	251	251	267	282	282	5447	2218	2218	2724	3229	3229	5447	2218	2218	2724	3229	3229

<sup>a</sup> Patients, # = number of patients; Patientdays, # = number of patientdays; agg = aggregated over all participating units; p10-p90 = percentile of distribution of participating units



Table 11: Antibiotic Use Distribution (aggregated)

	# <sup>a</sup>		% <sup>a</sup>							incd <sup>a</sup>						
	agg		agg	p10	p25	p50	p75	p90	agg	p10	p25	p50	p75	p90		
Total AB days	5012								920	886	886	915	944	944		
AB days with SDD use	0	0	0	0	0	0	0	0	0	0	0	0	0	0		
AB days with Profylactic use	104	2	0	0	3	5	5	19	3	3	23	43	43	43		
AB days with Empirical use	2832	57	40	40	53	67	67	520	350	350	493	636	636	636		
AB days with Microorganism known	191	4	0	0	5	10	10	35	0	0	43	86	86	86		
AB days with Antibigram known	1885	38	32	32	39	46	46	346	304	304	356	407	407	407		

<sup>a</sup> #=# number of Antibiotic days with particular use; %=# AB days/100 total AB days; incd=# AB days/1000 patientdays of units with AB use; agg=aggregated over all participating units; p10-p90=percentile of distribution of participating units



Table 12: Antibiotic Use (exhaustive) (a)

Antibiotic	pats #	patdays #	Antibiotic days, # <sup>a</sup>						
			T	S	P	E	M	A	
all			5012	0	104	2832	191	1885	
J01C	PENICILLINS	321	3936	2009	0	18	1399	55	537
J01CA	Penicillins extended spectrum	39	656	255	0	1	60	6	188
J01CA01	Ampicillin	9	123	59	0	1	24	1	33
J01CA04	Amoxicillin	10	122	54	0	0	5	2	47
J01CA12	Piperacillin	11	194	58	0	0	30	0	28
J01CA17	Temocillin	12	326	84	0	0	1	3	80
J01CF	SS-lactamase resist. penicillins	22	257	94	0	0	13	10	71
J01CF04	Oxacillin	2	31	21	0	0	2	0	19
J01CF05	Flucloxacillin	20	226	73	0	0	11	10	52
J01CG	SS-lactamase inhibitors	85	1061	383	0	8	223	28	124
J01CG02	Tazobactam	85	1061	383	0	8	223	28	124
J01CR	SS-lactam + SS-lactamase inhibitor	229	2848	1277	0	9	1103	11	154
J01CR02	Amoxicillin + clavulanic acid	175	2034	842	0	9	732	11	90
J01CR05	Piperacilline + Tazobactam	78	1290	435	0	0	371	0	64
J01D	OTH. SS-LACTAM AB,INCL.CEPHALOSP.	220	3203	1470	0	36	711	22	701
J01DA	Cephalosporins	164	2272	840	0	36	399	17	388
J01DA04	Cefazolin	16	134	26	0	17	9	0	0
J01DA06	Cefuroxime	51	603	212	0	18	94	7	93
J01DA10	Cefotaxime	12	120	43	0	0	24	2	17
J01DA11	Ceftazidime	47	821	270	0	1	81	8	180
J01DA13	Ceftriaxone	46	797	249	0	0	162	0	87
J01DA24	Cefepime	10	176	40	0	0	29	0	11
J01DF	Monobactams	2	25	11	0	0	5	0	6
J01DF01	Aztreonam	2	25	11	0	0	5	0	6
J01DH	Carbapenems	83	1488	619	0	0	307	5	307
J01DH02	Meropenem	83	1488	619	0	0	307	5	307

<sup>a</sup> T=total use; S=SDD use; P=Profylactic use; E=Empirical use; M=Microorganism known; A=Antibogram known



Table 13: Antibiotic Use (exhaustive) (b)

Antibiotic		pats #	patdays #	Antibiotic days, # <sup>a</sup>					
				T	S	P	E	M	A
J01E	SULFONAMIDES AND COMBINATIONS	24	495	161	0	15	58	8	80
J01EA	Trimethoprim	22	443	137	0	2	55	8	72
J01EA01	Trimethoprim	22	443	137	0	2	55	8	72
J01EE	Sulfonamides + trimethoprim + deriv	2	52	24	0	13	3	0	8
J01EE02	Sulfadiazine + trimethoprim	1	7	3	0	0	3	0	0
J01F	MACROLIDES AND LINCOSAMIDES	59	707	243	0	1	180	18	44
J01FA	Macrolides + Synergistins	45	527	176	0	1	144	15	16
J01FA01	Erythromycin	2	23	7	0	1	0	0	6
J01FA09	Clarithromycin	43	504	169	0	0	144	15	10
J01FF	Lincosamides	14	180	67	0	0	36	3	28
J01FF01	Clindamycin	14	180	67	0	0	36	3	28
J01G	AMINOGLYCOSIDE ANTIBACTERIALS	70	1207	191	0	0	113	4	74
J01GB	Aminoglycosides other than strep	70	1207	191	0	0	113	4	74
J01GB03	Gentamicin	4	81	24	0	0	7	0	17
J01GB06	Amikacin	67	1136	167	0	0	106	4	57
J01M	QUINOLONE ANTIBACTERIALS	44	934	264	0	0	101	10	153
J01MA	Fluoroquinolones	44	934	264	0	0	101	10	153
J01MA02	Ciprofloxacin	36	875	230	0	0	78	0	152
J01MA12	Levofloxacin	2	19	11	0	0	0	10	1
J01MA14	Moxifloxacin	6	40	23	0	0	23	0	0

<sup>a</sup> T=total use; S=SDD use; P=Profylactic use; E=Empirical use; M=Microorganism known; A=Antibiogram known

Table 14: Antibiotic Use (exhaustive) (c)

Antibiotic		pats #	patdays #	Antibiotic days, # <sup>a</sup>					
				T	S	P	E	M	A
J01X	OTHER ANTIBACTERIALS	64	1249	417	0	2	195	9	211
J01XA	Glycopeptide antibacterials	58	1151	377	0	2	168	9	198
J01XA01	Vancomycin	58	1151	377	0	2	168	9	198
J01XD	Imidazole derivatives	2	19	12	0	0	8	0	4
J01XD01	Metronidazole	2	19	12	0	0	8	0	4
J01XX08	Linezolid	4	79	28	0	0	19	0	9
J02A	ANTIMYCOTICS FOR SYSTEMIC USE	13	235	63	0	0	15	25	23
J02AA	Antifungal antibiotics	1	38	18	0	0	0	18	0
J02AC	Triazole derivative antimycotics	10	170	30	0	0	15	4	11
J02AC01	Fluconazole	10	170	30	0	0	15	4	11
J02AX	Other systemic antimycotics	1	20	12	0	0	0	0	12
J02AX04	Caspofungin	1	20	12	0	0	0	0	12
J04A	TREATMENT OF TUBERCULOSIS	1	26	6	0	0	0	0	6
J04AB	Antimycobacterial antibiotics	1	26	6	0	0	0	0	6
J04AB02	Rifampicin	1	26	6	0	0	0	0	6

<sup>a</sup> T=total use; S=SDD use; P=Profylactic use; E=Empirical use; M=Microorganism known; A=Antibiogram known



Table 15: Pneumonia and Admission Exposure (a)

	pats <sup>a</sup>						patdays <sup>a</sup>						NP <sup>a</sup>						IAP <sup>a</sup>																		
	# <sup>b</sup>		% <sup>b</sup>		# <sup>b</sup>		% <sup>b</sup>		# <sup>b</sup>		% <sup>b</sup>		agg		p10		p25		p50		p75		p90		agg		p10		p25		p50		p75		p90		
	agg	agg	agg	agg	agg	agg	agg	agg	agg	agg	agg	agg	agg	agg	agg	agg	agg	agg	agg	agg	agg	agg	agg	agg	agg	agg	agg	agg	agg	agg	agg	agg	agg	agg	agg		
<b>Age</b>																																					
≤ 40	24	3.9	227	3.9	0	0.0	0.0	0.0	0.0	0.0	0.0	0.0	0.0	0.0	0.0	0.0	0.0	0.0	0.0	0.0	0.0	0.0	0.0	0.0	0.0	0.0	0.0	0.0	0.0	0.0	0.0	0.0	0.0	0.0	0.0	0.0	0.0
40-59	104	16.9	932	15.8	4	3.8	1.9	2.8	12.5	12.5	4.3	2.0	2.0	3.2	16.7	16.7	4	10.7	5.0	5.0	7.6	48.8	48.8														
60-69	153	24.9	1747	29.7	7	4.6	4.2	4.5	4.8	4.0	3.5	3.5	3.8	7.6	7.6	5	6.6	5.3	5.3	6.0	58.8	58.8															
70-74	75	12.2	742	12.6	2	2.7	0.0	0.0	3.7	9.1	2.7	0.0	0.0	3.0	19.2	19.2	1	2.8	0.0	0.0	0.0	5.5	5.5														
75-79	93	15.1	929	15.8	3	3.2	0.0	0.0	2.8	4.2	3.2	0.0	0.0	2.1	4.9	4.9	2	5.6	0.0	0.0	4.5	7.5	7.5														
≥ 80	165	26.9	1315	22.3	5	3.0	0.0	0.0	4.2	9.1	3.8	0.0	0.0	3.9	20.4	20.4	3	7.2	0.0	0.0	0.0	10.5	10.5														
unknown	0	0.0	0	0.0	0	0.0	0.0	0.0	0.0	0.0	0.0	0.0	0.0	0.0	0.0	0.0	0	0.0	0.0	0.0	0.0	0.0	0.0	0.0	0.0	0.0	0.0	0.0	0.0	0.0	0.0	0.0	0.0	0.0	0.0		
<b>Gender</b>																																					
female	263	42.8	2360	40.1	4	1.5	0.0	0.0	2.3	3.0	1.7	0.0	0.0	2.1	6.0	6.0	3	3.3	0.0	0.0	0.0	4.9	4.9														
male	351	57.2	3532	59.9	17	4.8	3.3	3.3	4.6	10.4	4.8	3.4	3.4	3.9	18.1	18.1	12	8.5	6.0	6.0	6.9	56.6	56.6														
unknown	0	0.0	0	0.0	0	0.0	0.0	0.0	0.0	0.0	0.0	0.0	0.0	0.0	0.0	0.0	0	0.0	0.0	0.0	0.0	0.0	0.0	0.0	0.0	0.0	0.0	0.0	0.0	0.0	0.0	0.0	0.0	0.0	0.0	0.0	
<b>SAPSII score</b>																																					
≤ 10	7	1.1	38	0.6	0	0.0	0.0	0.0	0.0	0.0	0.0	0.0	0.0	0.0	0.0	0.0	0	0.0	0.0	0.0	0.0	0.0	0.0	0.0	0.0	0.0	0.0	0.0	0.0	0.0	0.0	0.0	0.0	0.0	0.0	0.0	0.0
10-19	44	7.2	278	4.7	1	2.3	0.0	0.0	0.0	8.3	3.6	0.0	0.0	0.0	17.9	17.9	1	25.0	0.0	0.0	0.0	100.0	100.0														
20-29	113	18.4	778	13.2	2	1.8	0.0	0.0	3.3	4.0	2.6	0.0	0.0	5.2	7.7	7.7	1	6.5	0.0	0.0	0.0	30.3	30.3														
30-39	166	27.0	1745	29.6	9	5.4	3.2	3.2	4.8	7.2	5.2	3.4	3.4	5.8	8.0	8.0	7	13.1	11.5	11.5	13.3	43.5	43.5														
40-49	124	20.2	1181	20.0	2	1.6	0.0	0.0	1.4	2.2	1.7	0.0	0.0	1.6	1.9	1.9	1	2.1	0.0	0.0	0.0	4.0	4.0														
50-59	82	13.4	969	16.4	3	3.7	2.3	2.3	3.1	16.7	3.1	1.9	1.9	2.5	30.3	30.3	2	4.0	0.0	0.0	3.6	4.7	4.7														
≥ 60	73	11.9	880	14.9	4	5.5	0.0	0.0	5.7	33.3	4.5	0.0	0.0	4.1	41.7	41.7	3	4.9	0.0	0.0	5.4	55.6	55.6														
unknown	5	0.8	23	0.4	0	0.0	0.0	0.0	0.0	0.0	0.0	0.0	0.0	0.0	0.0	0.0	0	0.0	0.0	0.0	0.0	0.0	0.0	0.0	0.0	0.0	0.0	0.0	0.0	0.0	0.0	0.0	0.0	0.0	0.0	0.0	

<sup>a</sup> pats=patients patdays=patient days NP=Nosocomial P pneumonia; IAP=Intubation Associated NP

<sup>b</sup> #=#crude number; pats/patdays %=percentage of total pats/patdays; NP %=# NP /100 patients; NP incid = # NP / 1000 patientdays; IAP incid = # NP / 1000 intubation days (before 1st NP); IUR=Intubation Utilization Rate, intubation days / 1000 patientdays





Table 16: Pneumonia and Admission Exposure (b)

	pats <sup>a</sup>						patdays <sup>a</sup>						NP <sup>a</sup>						IAP <sup>a</sup>						
	# <sup>b</sup>		% <sup>b</sup>		# <sup>b</sup>		% <sup>b</sup>		# <sup>b</sup>		% <sup>b</sup>		# <sup>b</sup>		% <sup>b</sup>		# <sup>b</sup>		% <sup>b</sup>		# <sup>b</sup>		% <sup>b</sup>		
	agg	agg	agg	agg	agg	agg	agg	agg	agg	agg	agg	agg	agg	agg	agg	agg	agg	agg	agg	agg	agg	agg	agg	agg	
<b>APACHE score</b>																									
< 10	0	0.0	0	0.0	0	0.0	0	0.0	0	0.0	0	0.0	0	0.0	0	0.0	0	0.0	0	0.0	0	0.0	0	0.0	
10-19	0	0.0	0	0.0	0	0.0	0	0.0	0	0.0	0	0.0	0	0.0	0	0.0	0	0.0	0	0.0	0	0.0	0	0.0	
20-29	0	0.0	0	0.0	0	0.0	0	0.0	0	0.0	0	0.0	0	0.0	0	0.0	0	0.0	0	0.0	0	0.0	0	0.0	
30-39	0	0.0	0	0.0	0	0.0	0	0.0	0	0.0	0	0.0	0	0.0	0	0.0	0	0.0	0	0.0	0	0.0	0	0.0	
40-49	0	0.0	0	0.0	0	0.0	0	0.0	0	0.0	0	0.0	0	0.0	0	0.0	0	0.0	0	0.0	0	0.0	0	0.0	
50-59	0	0.0	0	0.0	0	0.0	0	0.0	0	0.0	0	0.0	0	0.0	0	0.0	0	0.0	0	0.0	0	0.0	0	0.0	
> 60	0	0.0	0	0.0	0	0.0	0	0.0	0	0.0	0	0.0	0	0.0	0	0.0	0	0.0	0	0.0	0	0.0	0	0.0	
unknown	614	100.0	5892	100.0	21	3.4	2.0	2.0	2.0	3.5	7.4	7.4	7.4	3.6	2.3	2.3	3.1	13.5	13.5	15	6.4	3.8	3.8	44.1	
<b>Patient Origin</b>																									
other service	347	56.5	3517	59.7	15	4.3	2.4	2.4	2.4	4.3	11.4	11.4	11.4	4.3	2.6	2.6	3.7	19.1	19.1	12	8.2	4.8	4.8	58.8	
other ICU	8	1.3	70	1.2	0	0.0	0.0	0.0	0.0	0.0	0.0	0.0	0.0	0.0	0.0	0.0	0.0	0.0	0.0	0	0.0	0.0	0.0	0.0	
community	216	35.2	1985	33.7	6	2.8	2.1	2.1	2.1	2.5	4.7	4.7	4.7	3.0	2.3	2.3	2.3	8.9	8.9	3	4.1	0.0	0.0	5.1	
nursing home	35	5.7	274	4.7	0	0.0	0.0	0.0	0.0	0.0	0.0	0.0	0.0	0.0	0.0	0.0	0.0	0.0	0.0	0	0.0	0.0	0.0	0.0	
unknown	8	1.3	46	0.8	0	0.0	0.0	0.0	0.0	0.0	0.0	0.0	0.0	0.0	0.0	0.0	0.0	0.0	0.0	0	0.0	0.0	0.0	0.0	
<b>Type of Admission</b>																									
medical	457	74.4	4384	74.4	14	3.1	1.3	1.3	1.3	3.6	8.5	8.5	8.5	3.2	1.5	1.5	3.0	14.5	14.5	10	5.7	2.9	2.9	50.8	
scheduled surgical	106	17.3	892	15.1	2	1.9	0.0	0.0	0.0	0.0	2.3	2.3	2.3	2.2	0.0	0.0	0.0	2.6	2.6	2	7.0	0.0	0.0	7.8	
cal	47	7.7	591	10.0	5	10.6	7.4	7.4	7.4	14.3	15.4	15.4	15.4	8.5	4.7	4.7	14.4	34.5	34.5	3	10.2	0.0	0.0	13.3	
unscheduled surgical	4	0.7	25	0.4	0	0.0	0.0	0.0	0.0	0.0	0.0	0.0	0.0	0.0	0.0	0.0	0.0	0.0	0.0	0	0.0	0.0	0.0	0.0	
unknown	4	0.7	25	0.4	0	0.0	0.0	0.0	0.0	0.0	0.0	0.0	0.0	0.0	0.0	0.0	0.0	0.0	0.0	0	0.0	0.0	0.0	0.0	

<sup>a</sup> pats=patients patdays=patient days NP=Nosocomial Pneumonia; IAP=Intubation Associated NP

<sup>b</sup> #=#crude number; pats/patdays %=percentage of total pats/patdays; NP %=# NP / 100 patients; NP incid = # NP / 1000 patientdays; IAP incid = # NP / 1000 intubation days (before 1st NP); IUR=Intubation Utilization Rate, intubation days / 1000 patientdays



Table 17: Pneumonia and Admission Exposure (c)

	pats <sup>a</sup>			patdays <sup>a</sup>			NP <sup>a</sup>												IAP <sup>a</sup>						
	# <sup>b</sup>	% <sup>b</sup>	# <sup>b</sup>	# <sup>b</sup>	% <sup>b</sup>	# <sup>b</sup>	agg	p10	p25	p50	p75	p90	agg	p10	p25	p50	p75	p90	agg	p10	p25	p50	p75	p90	
<b>Trauma</b>																									
no	566	92.2	5387	91.4	18	3.2	1.6	1.6	3.6	6.8	6.8	6.8	3.3	1.8	1.8	3.2	12.3	12.3	13	6.1	2.6	2.6	6.1	44.1	44.1
yes	46	7.5	495	8.4	3	6.5	2.9	2.9	14.3	20.0	20.0	20.0	6.1	2.4	2.4	25.0	25.6	25.6	2	10.8	5.9	5.9	36.3	66.7	66.7
unknown	2	0.3	10	0.2	0	0.0	0.0	0.0	0.0	0.0	0.0	0.0	0.0	0.0	0.0	0.0	0.0	0.0	0	0.0	0.0	0.0	0.0	0.0	0.0
<b>Impaired Immunity</b>																									
no	546	88.9	5033	85.4	17	3.1	2.2	2.2	2.9	6.4	6.4	6.4	3.4	2.5	2.5	2.7	11.7	11.7	12	6.4	4.4	4.4	5.4	44.1	44.1
yes	67	10.9	854	14.5	4	6.0	0.0	0.0	7.3	33.3	33.3	33.3	4.7	0.0	0.0	4.8	52.6	52.6	3	6.4	0.0	0.0	4.1	8.1	8.1
unknown	1	0.2	5	0.1	0	0.0	0.0	0.0	0.0	0.0	0.0	0.0	0.0	0.0	0.0	0.0	0.0	0.0	0	0.0	0.0	0.0	0.0	0.0	0.0
<b>Antibiotic Treatment</b>																									
no	380	61.9	3549	60.2	9	2.4	2.2	2.2	2.3	3.2	3.2	3.2	2.5	2.2	2.2	2.7	6.9	6.9	5	3.8	2.9	2.9	3.5	4.1	4.1
yes	230	37.5	2321	39.4	12	5.2	1.8	1.8	7.6	10.0	10.0	10.0	5.2	1.8	1.8	5.4	16.7	16.7	10	9.9	4.6	4.6	9.8	44.1	44.1
unknown	4	0.7	22	0.4	0	0.0	0.0	0.0	0.0	0.0	0.0	0.0	0.0	0.0	0.0	0.0	0.0	0.0	0	0.0	0.0	0.0	0.0	0.0	0.0

<sup>a</sup> pats=patients patdays=patient days NP=Nosocomial Pneumonia; IAP=Intubation Associated NP

<sup>b</sup> #=#crude number; pats/patdays %=#percentage of total pats/patdays; NP %=# NP /100 patients; NP incid = # NP / 1000 patientdays; IAP incid = # NP / 1000 intubation days (before 1st NP); IUR=Intubation Utilization Rate, intubation days / 1000 patientdays



Table 18: Pneumonia and Admission Exposure (d)

	pats <sup>a</sup>						patdays <sup>a</sup>						NP <sup>a</sup>						IAP <sup>a</sup>								
	# <sup>b</sup>		% <sup>b</sup>		# <sup>b</sup>		% <sup>b</sup>		# <sup>b</sup>		% <sup>b</sup>		incd <sup>b</sup>		# <sup>b</sup>		incd <sup>b</sup>		# <sup>b</sup>		incd <sup>b</sup>						
	agg	agg	agg	agg	agg	agg	p10	p25	p50	p75	p90	agg	p10	p25	p50	p75	p90	agg	p10	p25	p50	p75	p90				
<b>Acute Coronary Care</b>																											
no	573	93.3	5628	95.5	20	3.5	2.1	2.1	3.7	7.4	7.4	7.4	7.4	7.4	3.6	2.4	2.4	3.2	13.1	13.1	14	6.3	4.0	4.0	6.3	39.2	39.2
yes	33	5.4	214	3.6	1	3.0	0.0	0.0	0.0	7.7	7.7	7.7	7.7	4.7	0.0	0.0	0.0	0.0	15.6	15.6	1	12.3	0.0	0.0	0.0	58.8	58.8
unknown	8	1.3	50	0.8	0	0.0	0.0	0.0	0.0	0.0	0.0	0.0	0.0	0.0	0.0	0.0	0.0	0.0	0.0	0.0	0	0.0	0.0	0.0	0.0	0.0	
<b>Prior Surgery site</b>																											
no	415	67.6	3892	66.1	12	2.9	1.5	1.5	3.2	7.1	7.1	7.1	7.1	3.1	1.8	1.8	2.7	12.5	12.5	8	5.1	3.3	3.3	4.3	40.8	40.8	
coronary	0	0.0	0	0.0	0	0.0	0.0	0.0	0.0	0.0	0.0	0.0	0.0	0.0	0.0	0.0	0.0	0.0	0.0	0	0.0	0.0	0.0	0.0	0.0	0.0	
other cardiac	2	0.3	16	0.3	0	0.0	0.0	0.0	0.0	0.0	0.0	0.0	0.0	0.0	0.0	0.0	0.0	0.0	0.0	0	0.0	0.0	0.0	0.0	0.0	0.0	
other thoracic	16	2.6	192	3.3	2	12.5	0.0	0.0	11.1	20.0	20.0	20.0	20.0	10.4	0.0	0.0	8.0	16.4	16.4	1	9.3	0.0	0.0	0.0	6.3	12.7	
other vascular	18	2.9	136	2.3	1	5.6	0.0	0.0	0.0	20.0	20.0	20.0	20.0	7.4	0.0	0.0	0.0	31.3	31.3	1	35.7	0.0	0.0	0.0	100.0	100.0	
abdominal	9	1.5	263	4.5	1	11.1	11.1	11.1	11.1	11.1	11.1	11.1	11.1	3.8	3.8	3.8	3.8	3.8	3.8	1	5.2	5.2	5.2	5.2	5.2	5.2	
neurosurgery	37	6.0	349	5.9	2	5.4	0.0	0.0	5.9	12.5	12.5	12.5	12.5	5.7	0.0	0.0	4.5	28.6	28.6	1	8.3	0.0	0.0	6.6	13.2		
other	117	19.1	1044	17.7	3	2.6	0.0	0.0	0.0	3.5	3.5	3.5	3.5	2.9	0.0	0.0	0.0	3.7	3.7	3	9.9	0.0	0.0	0.0	13.6		
unknown	0	0.0	0	0.0	0	0.0	0.0	0.0	0.0	0.0	0.0	0.0	0.0	0.0	0.0	0.0	0.0	0.0	0.0	0	0.0	0.0	0.0	0.0	0.0		

<sup>a</sup> pats=patients patdays=patient days NP=Nosocomial P pneumonia; IAP=Intubation Associated NP

<sup>b</sup> #=#crude number; pats/patdays %=percentage of total pats/patdays; NP %=# NP /100 patients; NP incid = # NP / 1000 patientdays; IAP incid = # NP / 1000 intubation days (before 1st NP); IUR=Intubation Utilization Rate; intubation days / 1000 patientdays



Table 19: Bloodstream Infection and Admission Exposure (a)

	pats <sup>a</sup>				patdays <sup>a</sup>				NB <sup>a</sup>				CAB <sup>a</sup>												
	# <sup>b</sup>		% <sup>b</sup>		# <sup>b</sup>		% <sup>b</sup>		# <sup>b</sup>		% <sup>b</sup>		# <sup>b</sup>		% <sup>b</sup>										
	agg	agg	agg	agg	agg	agg	agg	agg	agg	agg	agg	agg	agg	agg	agg	agg									
<b>Age</b>																									
≤ 40	24	3.9	227	3.9	1	4.2	0.0	0.0	0.0	9.1	9.1	4.4	0.0	0.0	8.5	8.5	1	6.2	0.0	0.0	0.0	9.7	9.7		
40-59	104	16.9	932	15.8	3	2.9	1.9	1.9	2.8	6.3	6.3	3.2	2.0	2.0	3.2	8.3	8.3	3	4.4	2.7	2.7	4.7	10.9	10.9	
60-69	153	24.9	1747	29.7	9	5.9	4.5	4.5	4.8	8.3	8.3	5.2	3.8	3.8	7.1	7.6	7.6	9	7.1	4.5	4.5	12.8	15.9	15.9	
70-74	75	12.2	742	12.6	4	5.3	0.0	0.0	0.0	10.8	10.8	5.4	0.0	0.0	11.2	11.2	11.2	3	5.4	0.0	0.0	0.0	11.1	11.1	
75-79	93	15.1	929	15.8	3	3.2	0.0	0.0	0.0	6.3	6.3	3.2	0.0	0.0	7.3	7.3	7.3	2	2.9	0.0	0.0	0.0	6.7	6.7	
≥ 80	165	26.9	1315	22.3	3	1.8	0.0	0.0	1.4	2.8	2.8	2.3	0.0	0.0	1.3	4.4	4.4	3	3.6	0.0	0.0	1.9	7.7	7.7	
unknown	0	0.0	0	0.0	0	0.0	0.0	0.0	0.0	0.0	0.0	0.0	0.0	0.0	0.0	0.0	0.0	0	0.0	0.0	0.0	0.0	0.0	0.0	
<b>Gender</b>																									
female	263	42.8	2360	40.1	7	2.7	0.0	0.0	1.5	5.0	5.0	3.0	0.0	0.0	1.4	6.6	6.6	6	3.5	0.0	0.0	1.8	7.7	7.7	
male	351	57.2	3532	59.9	16	4.6	2.6	2.6	4.2	6.6	6.6	4.5	2.2	2.2	6.8	7.2	7.2	15	6.1	2.9	2.9	9.6	12.4	12.4	
unknown	0	0.0	0	0.0	0	0.0	0.0	0.0	0.0	0.0	0.0	0.0	0.0	0.0	0.0	0.0	0.0	0	0.0	0.0	0.0	0.0	0.0	0.0	
<b>SAPSII score</b>																									
≤ 10	7	1.1	38	0.6	0	0.0	0.0	0.0	0.0	0.0	0.0	0.0	0.0	0.0	0.0	0.0	0.0	0	0.0	0.0	0.0	0.0	0.0	0.0	
10-19	44	7.2	278	4.7	1	2.3	0.0	0.0	0.0	4.0	4.0	3.6	0.0	0.0	0.0	5.4	5.4	1	5.8	0.0	0.0	0.0	7.5	7.5	
20-29	113	18.4	778	13.2	2	1.8	0.0	0.0	1.7	3.3	3.3	2.6	0.0	0.0	2.2	5.2	5.2	2	4.5	0.0	0.0	3.4	10.1	10.1	
30-39	166	27.0	1745	29.6	8	4.8	3.6	3.6	4.8	6.5	6.5	4.6	2.9	2.9	6.8	8.0	8.0	6	5.1	3.7	3.7	6.5	16.9	16.9	
40-49	124	20.2	1181	20.0	5	4.0	2.2	2.2	4.3	11.1	11.1	4.2	1.9	1.9	4.9	22.7	22.7	5	5.8	2.5	2.5	7.1	35.7	35.7	
50-59	82	13.4	969	16.4	3	3.7	0.0	0.0	0.0	6.8	6.8	3.1	0.0	0.0	7.4	7.4	7.4	3	4.0	0.0	0.0	0.0	9.4	9.4	
≥ 60	73	11.9	880	14.9	4	5.5	0.0	0.0	0.0	12.5	12.5	4.5	0.0	0.0	11.6	11.6	11.6	4	5.2	0.0	0.0	0.0	13.8	13.8	
unknown	5	0.8	23	0.4	0	0.0	0.0	0.0	0.0	0.0	0.0	0.0	0.0	0.0	0.0	0.0	0.0	0	0.0	0.0	0.0	0.0	0.0	0.0	

<sup>a</sup> pats=patients patdays=patient days NB=Nosocomial Bacteremia; CAB=Catheter Associated NB

<sup>b</sup> #=#crude number; pats/patdays %=percentage of total pats/patdays; NB %=# NB /100 patients; NB incid = # NB / 1000 patientdays; CAB incid = # NP / 1000 Catheter days (before 1st NB);



Table 20: Bloodstream Infection and Admission Exposure (b)

	pats <sup>a</sup>				patdays <sup>a</sup>				NB <sup>a</sup>										CAB <sup>a</sup>								
	# <sup>b</sup>		% <sup>b</sup>		# <sup>b</sup>		% <sup>b</sup>		# <sup>b</sup>		% <sup>b</sup>		# <sup>b</sup>		% <sup>b</sup>		# <sup>b</sup>		% <sup>b</sup>		# <sup>b</sup>		% <sup>b</sup>				
	agg	agg	agg	agg	agg	agg	agg	agg	agg	agg	agg	agg	agg	agg	agg	agg	agg	agg	agg	agg	agg	agg	agg	agg			
<b>APACHE score</b>																											
< 10	0	0.0	0	0.0	0	0.0	0	0.0	0	0.0	0	0.0	0	0.0	0	0.0	0	0.0	0	0.0	0	0.0	0	0.0	0	0.0	
10-19	0	0.0	0	0.0	0	0.0	0	0.0	0	0.0	0	0.0	0	0.0	0	0.0	0	0.0	0	0.0	0	0.0	0	0.0	0	0.0	
20-29	0	0.0	0	0.0	0	0.0	0	0.0	0	0.0	0	0.0	0	0.0	0	0.0	0	0.0	0	0.0	0	0.0	0	0.0	0	0.0	
30-39	0	0.0	0	0.0	0	0.0	0	0.0	0	0.0	0	0.0	0	0.0	0	0.0	0	0.0	0	0.0	0	0.0	0	0.0	0	0.0	
40-49	0	0.0	0	0.0	0	0.0	0	0.0	0	0.0	0	0.0	0	0.0	0	0.0	0	0.0	0	0.0	0	0.0	0	0.0	0	0.0	
50-59	0	0.0	0	0.0	0	0.0	0	0.0	0	0.0	0	0.0	0	0.0	0	0.0	0	0.0	0	0.0	0	0.0	0	0.0	0	0.0	
> 60	0	0.0	0	0.0	0	0.0	0	0.0	0	0.0	0	0.0	0	0.0	0	0.0	0	0.0	0	0.0	0	0.0	0	0.0	0	0.0	
unknown	614	100.0	5892	100.0	23	3.7	2.1	2.1	2.1	2.5	6.0	6.0	6.0	3.9	1.9	1.9	1.9	4.5	6.8	6.8	21	5.0	2.4	2.4	8.6	8.9	8.9
<b>Patient Origin</b>																											
other service	347	56.5	3517	59.7	15	4.3	2.7	2.7	2.9	7.1	7.1	7.1	4.3	2.3	2.3	4.8	7.9	7.9	15	5.4	2.9	2.9	6.6	10.3	10.3	10.3	
other ICU	8	1.3	70	1.2	0	0.0	0.0	0.0	0.0	0.0	0.0	0.0	0.0	0.0	0.0	0.0	0.0	0.0	0	0.0	0.0	0.0	0.0	0.0	0.0	0.0	
community	216	35.2	1985	33.7	6	2.8	1.3	1.3	2.3	4.3	4.3	3.0	3.0	1.1	1.1	4.4	4.6	4.6	5	4.2	1.6	1.6	6.3	13.0	13.0	13.0	
nursing home	35	5.7	274	4.7	1	2.9	0.0	0.0	0.0	4.5	4.5	4.5	3.6	0.0	0.0	0.0	0.0	6.4	6.4	0	0.0	0.0	0.0	0.0	0.0	0.0	
unknown	8	1.3	46	0.8	1	12.5	12.5	12.5	12.5	12.5	12.5	12.5	21.7	21.7	21.7	21.7	21.7	21.7	1	34.5	34.5	34.5	34.5	34.5	34.5	34.5	
<b>Type of Admission</b>																											
medical	457	74.4	4384	74.4	19	4.2	1.8	1.8	3.4	6.1	6.1	6.1	4.3	1.5	1.5	5.8	7.0	7.0	17	5.8	2.0	2.0	9.3	13.1	13.1	13.1	
scheduled surgical	106	17.3	892	15.1	4	3.8	0.0	0.0	3.4	25.0	25.0	4.5	4.5	0.0	0.0	3.9	23.3	23.3	4	5.4	0.0	0.0	4.7	24.4	24.4	24.4	
unscheduled surgical	47	7.7	591	10.0	0	0.0	0.0	0.0	0.0	0.0	0.0	0.0	0.0	0.0	0.0	0.0	0.0	0.0	0	0.0	0.0	0.0	0.0	0.0	0.0	0.0	
unknown	4	0.7	25	0.4	0	0.0	0.0	0.0	0.0	0.0	0.0	0.0	0.0	0.0	0.0	0.0	0.0	0.0	0	0.0	0.0	0.0	0.0	0.0	0.0	0.0	

<sup>a</sup> pats=patients patdays=patient days NB=Nosocomial Bacteremia; CAB=Catheter Associated NB

<sup>b</sup> #=#crude number; pats/patdays %=percentage of total pats/patdays; NB %=# NB /100 patients; NB incid = # NB / 1000 patientdays; CAB incid = # NP / 1000 Catheter days (before 1st NB);



Table 21: Bloodstream Infection and Admission Exposure (c)

	pats <sup>a</sup>				patdays <sup>a</sup>				NB <sup>a</sup>										CAB <sup>a</sup>										
	# <sup>b</sup>		% <sup>b</sup>		# <sup>b</sup>		% <sup>b</sup>		# <sup>b</sup>		% <sup>b</sup>		# <sup>b</sup>		% <sup>b</sup>		# <sup>b</sup>		% <sup>b</sup>		# <sup>b</sup>		% <sup>b</sup>						
	agg	agg	agg	agg	agg	agg	agg	agg	agg	agg	agg	agg	agg	agg	agg	agg	agg	agg	agg	agg	agg	agg	agg	agg					
<b>Trauma</b>																													
no	566	92.2	5387	91.4	22	3.9	1.4	1.4	1.4	2.4	6.1	6.1	6.1	4.1	2.1	2.1	2.1	2.1	2.5	6.9	6.9	6.9	20	5.1	2.6	2.6	5.0	9.1	9.1
yes	46	7.5	495	8.4	1	2.2	0.0	0.0	0.0	0.0	14.3	14.3	14.3	2.0	0.0	0.0	0.0	0.0	0.0	25.6	25.6	25.6	1	3.5	0.0	0.0	0.0	31.3	31.3
unknown	2	0.3	10	0.2	0	0.0	0.0	0.0	0.0	0.0	0.0	0.0	0.0	0.0	0.0	0.0	0.0	0.0	0.0	0.0	0.0	0	0.0	0.0	0.0	0.0	0.0	0.0	
<b>Impaired Immunity</b>																													
no	546	88.9	5033	85.4	19	3.5	1.3	1.3	1.3	2.1	5.7	5.7	5.7	3.8	1.9	1.9	1.9	1.9	2.3	6.5	6.5	6.5	17	4.9	2.5	2.5	4.6	8.5	8.5
yes	67	10.9	854	14.5	4	6.0	2.4	2.4	2.4	8.7	33.3	33.3	33.3	4.7	1.6	1.6	1.6	1.6	9.6	52.6	52.6	52.6	4	5.6	1.9	1.9	11.6	58.8	58.8
unknown	1	0.2	5	0.1	0	0.0	0.0	0.0	0.0	0.0	0.0	0.0	0.0	0.0	0.0	0.0	0.0	0.0	0.0	0.0	0.0	0	0	0	0	0	0	0	0
<b>Antibiotic Treatment</b>																													
no	380	61.9	3549	60.2	12	3.2	0.0	0.0	0.0	1.4	6.7	6.7	6.7	3.4	0.0	0.0	0.0	0.0	1.3	8.1	8.1	8.1	10	4.2	0.0	0.0	1.7	11.5	11.5
yes	230	37.5	2321	39.4	11	4.8	4.0	4.0	4.0	4.5	5.3	5.3	5.3	4.7	3.2	3.2	3.2	3.2	5.5	6.7	6.7	6.7	11	6.1	3.8	3.8	7.1	10.8	10.8
unknown	4	0.7	22	0.4	0	0.0	0.0	0.0	0.0	0.0	0.0	0.0	0.0	0.0	0.0	0.0	0.0	0.0	0.0	0.0	0.0	0	0	0	0	0	0	0	0

<sup>a</sup> pats=patients patdays=patient days NB=Nosocomial Bacteremia; CAB=Catheter Associated NB

<sup>b</sup> #=#crude number; pats/patdays %=percentage of total pats/patdays; NB %=# NB /100 patients; NB incid = # NB / 1000 patientdays; CAB incid = # NP / 1000 Catheter days (before 1st NB);



Table 22: Bloodstream Infection and Admission Exposure (d)

	pats <sup>a</sup>				patdays <sup>a</sup>				NB <sup>a</sup>										CAB <sup>a</sup>																		
	# <sup>b</sup>		% <sup>b</sup>		# <sup>b</sup>		% <sup>b</sup>		# <sup>b</sup>		% <sup>b</sup>		# <sup>b</sup>		% <sup>b</sup>		# <sup>b</sup>		% <sup>b</sup>		# <sup>b</sup>		% <sup>b</sup>		# <sup>b</sup>		% <sup>b</sup>										
	agg	agg	agg	agg	agg	agg	agg	agg	agg	agg	agg	agg	agg	agg	agg	agg	agg	agg	agg	agg	agg	agg	agg	agg	agg	agg	agg	agg	agg								
<b>Acute Coronary Care</b>																																					
no	573	93.3	5628	95.5	23	4.0	2.2	2.2	2.2	2.9	6.4	6.4	6.4	4.1	1.9	1.9	5.2	7.1	7.1	7.1	21	5.2	2.5	2.5	2.5	9.1	9.2	9.2	9.2	9.2	9.2	9.2	9.2	9.2	9.2		
yes	33	5.4	214	3.6	0	0.0	0.0	0.0	0.0	0.0	0.0	0.0	0.0	0.0	0.0	0.0	0.0	0.0	0.0	0.0	0	0.0	0.0	0.0	0.0	0.0	0.0	0.0	0.0	0.0	0.0	0.0	0.0	0.0	0.0	0.0	
unknown	8	1.3	50	0.8	0	0.0	0.0	0.0	0.0	0.0	0.0	0.0	0.0	0.0	0.0	0.0	0.0	0.0	0.0	0.0	0	0.0	0.0	0.0	0.0	0.0	0.0	0.0	0.0	0.0	0.0	0.0	0.0	0.0	0.0	0.0	
<b>Prior Surgery site</b>																																					
no	415	67.6	3892	66.1	16	3.9	1.9	1.9	1.9	3.6	5.5	5.5	5.5	4.1	1.6	1.6	6.2	6.4	6.4	6.4	14	5.5	2.2	2.2	2.2	8.6	15.0	15.0	15.0	15.0	15.0	15.0	15.0	15.0	15.0	15.0	
coronary	0	0.0	0	0.0	0	0.0	0.0	0.0	0.0	0.0	0.0	0.0	0.0	0.0	0.0	0.0	0.0	0.0	0.0	0.0	0	0.0	0.0	0.0	0.0	0.0	0.0	0.0	0.0	0.0	0.0	0.0	0.0	0.0	0.0	0.0	0.0
other cardiac	2	0.3	16	0.3	0	0.0	0.0	0.0	0.0	0.0	0.0	0.0	0.0	0.0	0.0	0.0	0.0	0.0	0.0	0.0	0	0.0	0.0	0.0	0.0	0.0	0.0	0.0	0.0	0.0	0.0	0.0	0.0	0.0	0.0	0.0	0.0
other thoracic	16	2.6	192	3.3	0	0.0	0.0	0.0	0.0	0.0	0.0	0.0	0.0	0.0	0.0	0.0	0.0	0.0	0.0	0.0	0	0.0	0.0	0.0	0.0	0.0	0.0	0.0	0.0	0.0	0.0	0.0	0.0	0.0	0.0	0.0	0.0
other vascular	18	2.9	136	2.3	0	0.0	0.0	0.0	0.0	0.0	0.0	0.0	0.0	0.0	0.0	0.0	0.0	0.0	0.0	0.0	0	0.0	0.0	0.0	0.0	0.0	0.0	0.0	0.0	0.0	0.0	0.0	0.0	0.0	0.0	0.0	0.0
abdominal	9	1.5	263	4.5	0	0.0	0.0	0.0	0.0	0.0	0.0	0.0	0.0	0.0	0.0	0.0	0.0	0.0	0.0	0.0	0	0.0	0.0	0.0	0.0	0.0	0.0	0.0	0.0	0.0	0.0	0.0	0.0	0.0	0.0	0.0	0.0
neurosurgery	37	6.0	349	5.9	3	8.1	0.0	0.0	0.0	0.0	17.6	17.6	17.6	8.6	0.0	0.0	0.0	0.0	13.5	13.5	3	11.4	0.0	0.0	0.0	0.0	0.0	15.9	15.9	15.9	15.9	15.9	15.9	15.9	15.9	15.9	
other	117	19.1	1044	17.7	4	3.4	0.0	0.0	0.0	3.5	4.8	4.8	4.8	3.8	0.0	0.0	3.7	5.7	5.7	5.7	4	4.5	0.0	0.0	0.0	4.3	6.6	6.6	6.6	6.6	6.6	6.6	6.6	6.6	6.6	6.6	
unknown	0	0.0	0	0.0	0	0.0	0.0	0.0	0.0	0.0	0.0	0.0	0.0	0.0	0.0	0.0	0.0	0.0	0.0	0.0	0	0.0	0.0	0.0	0.0	0.0	0.0	0.0	0.0	0.0	0.0	0.0	0.0	0.0	0.0	0.0	0.0

<sup>a</sup> pats=patients patdays=patient days NB=Nosocomial Bacteremia; CAB=Catheter Associated NB

<sup>b</sup> #=#crude number; pats/patdays %=percentage of total pats/patdays; NB %=# NB /100 patients; NB incid = # NB / 1000 patientdays; CAB incid = # NP / 1000 Catheter days (before 1st NB);



Table 23: Pneumonia and Invasive Device Exposure (a)

	pats <sup>a</sup>		patdays <sup>a</sup>		NP <sup>a</sup>										IAP <sup>a</sup>													
	# <sup>b</sup>	% <sup>b</sup>	# <sup>b</sup>	% <sup>b</sup>	# <sup>b</sup>	% <sup>b</sup>	agg	p10	p25	p50	p75	p90	agg	p10	p25	p50	p75	p90	# <sup>b</sup>	% <sup>b</sup>	agg	p10	p25	p50	p75	p90		
	agg	agg	agg	agg	agg	agg	agg	agg	agg	agg	agg	agg	agg	agg	agg	agg	agg	agg	agg	agg	agg	agg	agg	agg	agg	agg		
<b>Intubation</b>																												
0	363	59.1	2969	50.4	5	1.4	0.7	0.7	0.7	4.4	4.4	1.7	0.7	0.7	0.7	0.8	9.1	9.1	9.1	0	0.0	0.0	0.0	0.0	0.0	0.0	0.0	0.0
1	97	15.8	637	10.8	4	4.1	2.0	2.0	5.4	11.1	11.1	6.3	2.9	2.9	2.9	8.4	19.6	19.6	19.6	3	14.1	10.1	10.1	10.1	11.0	43.5	43.5	
2/3	72	11.7	723	12.3	5	6.9	2.7	2.7	9.1	50.0	50.0	6.9	2.9	2.9	2.9	8.4	38.5	38.5	38.5	5	10.9	5.1	5.1	5.1	12.0	71.4	71.4	
4/6	46	7.5	782	13.3	5	10.9	0.0	0.0	5.9	14.3	14.3	6.4	0.0	0.0	0.0	3.6	8.0	8.0	8.0	5	9.0	0.0	0.0	0.0	5.5	11.0	11.0	
>=7	36	5.9	781	13.3	2	5.6	0.0	0.0	3.8	100.0	100.0	2.6	0.0	0.0	1.7	33.3	33.3	33.3	2	3.2	0.0	0.0	0.0	2.2	45.5	45.5		
<b>Central Vascular Catheter</b>																												
0	234	38.1	2040	34.6	5	2.1	0.0	0.0	1.8	7.5	7.5	2.5	0.0	0.0	0.0	2.1	15.3	15.3	15.3	1	1.7	0.0	0.0	0.0	0.0	0.0	0.0	0.0
1	22	3.6	90	1.5	2	9.1	0.0	0.0	9.1	33.3	33.3	22.2	0.0	0.0	0.0	23.8	58.8	58.8	58.8	1	45.5	0.0	0.0	0.0	0.0	125.0	125.0	
2/3	203	33.1	1389	23.6	6	3.0	1.3	1.3	3.9	4.2	4.2	4.3	2.2	2.2	2.2	4.9	7.8	7.8	7.8	5	11.9	8.3	8.3	8.3	10.7	52.6	52.6	
4/6	95	15.5	1163	19.7	5	5.3	0.0	0.0	4.9	6.1	6.1	4.3	0.0	0.0	0.0	4.2	4.7	4.7	4.7	5	9.3	0.0	0.0	0.0	9.5	9.8	9.8	
>=7	60	9.8	1210	20.5	3	5.0	0.0	0.0	4.8	100.0	100.0	2.5	0.0	0.0	0.0	2.3	33.3	33.3	33.3	3	3.9	0.0	0.0	0.0	3.6	45.5	45.5	
<b>Urinary Catheter</b>																												
0	164	26.7	1567	26.6	2	1.2	0.0	0.0	2.3	3.3	3.3	1.3	0.0	0.0	0.0	1.6	6.9	6.9	6.9	1	1.8	0.0	0.0	0.0	0.0	3.2	3.2	
1	30	4.9	146	2.5	3	10.0	0.0	0.0	9.1	14.3	14.3	20.5	0.0	0.0	0.0	14.5	37.7	37.7	37.7	1	29.4	0.0	0.0	0.0	0.0	125.0	125.0	
2/3	259	42.2	1682	28.5	7	2.7	1.0	1.0	3.2	6.3	6.3	4.2	1.6	1.6	1.6	4.6	11.4	11.4	11.4	5	11.4	6.1	6.1	6.1	12.0	43.5	43.5	
4/6	92	15.0	1133	19.2	5	5.4	0.0	0.0	3.6	8.8	8.8	4.4	0.0	0.0	0.0	3.2	6.3	6.3	6.3	4	8.3	0.0	0.0	0.0	7.1	10.4	10.4	
>=7	69	11.2	1364	23.2	4	5.8	0.0	0.0	5.8	50.0	50.0	2.9	0.0	0.0	0.0	2.8	22.7	22.7	22.7	4	4.8	0.0	0.0	0.0	4.8	38.5	38.5	

<sup>a</sup> pats=patients patdays=patient days NP=Nosocomial Pneumonia; IAP=Intubation Associated NP

<sup>b</sup> #=#crude number; pats/patdays %=percentage of total pats/patdays; NP %=# NP /100 patients; NP incid = # NP / 1000 patientdays; IAP incid = # NP / 1000 intubation days (before 1st NP); IUR=Intubation Utilization Rate, intubation days / 1000 patientdays





Table 24: Pneumonia and Invasive Device Exposure (b)

	pats <sup>a</sup>		patdays <sup>a</sup>		NP <sup>a</sup>										IAP <sup>a</sup>														
	# <sup>b</sup>	% <sup>b</sup>	# <sup>b</sup>	% <sup>b</sup>	%					incd <sup>b</sup>					# <sup>b</sup>					incd <sup>b</sup>									
					agg	p10	p25	p50	p75	p90	agg	p10	p25	p50	p75	p90	agg	p10	p25	p50	p75	p90							
<b>Naso Oro Intestinal Tube without feeding</b>																													
0	362	59.0	3043	51.6	5	1.4	0.0	0.0	1.1	4.9	4.9	1.6	0.0	0.0	1.3	10.2	10.2	10.2	10.2	10.2	10.2	3	3.6	0.0	0.0	0.0	4.3	66.7	66.7
1	98	16.0	867	14.7	5	5.1	2.7	2.7	5.9	10.0	10.0	5.8	3.6	3.6	5.6	19.2	19.2	19.2	19.2	19.2	19.2	2	6.2	0.0	0.0	0.0	4.2	12.2	12.2
2/3	89	14.5	790	13.4	6	6.7	0.0	0.0	5.6	22.2	22.2	7.6	0.0	0.0	6.4	22.0	22.0	22.0	22.0	22.0	22.0	5	13.4	0.0	0.0	0.0	10.4	48.8	48.8
4/6	36	5.9	559	9.5	4	11.1	0.0	0.0	0.0	13.8	13.8	7.2	0.0	0.0	8.2	8.2	8.2	8.2	8.2	8.2	8.2	4	11.3	0.0	0.0	0.0	0.0	13.0	13.0
>=7	29	4.7	633	10.7	1	3.4	3.4	3.4	3.4	3.4	3.4	1.6	1.6	1.6	1.6	1.6	1.6	1.6	1.6	1.6	1.6	1	2.2	2.2	2.2	2.2	2.2	2.2	2.2
<b>Naso Oro Intestinal Tube with feeding</b>																													
0	457	74.4	3779	64.1	8	1.8	0.0	0.0	2.2	3.9	3.9	2.1	0.0	0.0	2.2	7.6	7.6	7.6	7.6	7.6	7.6	6	5.5	0.0	0.0	0.0	6.3	28.6	28.6
1	36	5.9	403	6.8	5	13.9	8.0	8.0	12.5	66.7	66.7	12.4	7.6	7.6	8.5	95.2	95.2	95.2	95.2	95.2	95.2	2	14.5	0.0	0.0	0.0	16.7	90.9	90.9
2/3	65	10.6	737	12.5	5	7.7	7.4	7.4	7.7	7.9	7.9	6.8	5.2	5.2	6.8	8.5	8.5	8.5	8.5	8.5	8.5	4	8.8	3.7	3.7	3.7	9.9	16.0	16.0
4/6	38	6.2	611	10.4	3	7.9	0.0	0.0	11.1	100.0	100.0	4.9	0.0	0.0	5.5	33.3	33.3	33.3	33.3	33.3	33.3	3	7.4	0.0	0.0	8.1	45.5	45.5	
>=7	18	2.9	362	6.1	0	0.0	0.0	0.0	0.0	0.0	0.0	0.0	0.0	0.0	0.0	0.0	0.0	0.0	0.0	0.0	0.0	0	0.0	0.0	0.0	0.0	0.0	0.0	0.0
<b>Parenteral Nutrition</b>																													
0	524	85.3	4429	75.2	14	2.7	0.8	0.8	3.4	6.3	6.3	3.2	1.0	1.0	3.4	12.2	12.2	12.2	12.2	12.2	12.2	10	6.1	1.4	1.4	1.4	7.8	43.5	43.5
1	19	3.1	420	7.1	3	15.8	0.0	0.0	6.7	66.7	66.7	7.1	0.0	0.0	3.9	12.7	12.7	12.7	12.7	12.7	12.7	2	17.4	11.2	11.2	11.2	24.8	38.5	38.5
2/3	42	6.8	479	8.1	2	4.8	3.0	3.0	7.1	11.1	11.1	4.2	2.5	2.5	7.5	12.5	12.5	12.5	12.5	12.5	12.5	1	4.3	0.0	0.0	0.0	11.6	23.3	23.3
4/6	19	3.1	327	5.5	2	10.5	0.0	0.0	6.3	100.0	100.0	6.1	0.0	0.0	3.6	33.3	33.3	33.3	33.3	33.3	33.3	2	11.8	0.0	0.0	0.0	7.5	45.5	45.5
>=7	10	1.6	237	4.0	0	0.0	0.0	0.0	0.0	0.0	0.0	0.0	0.0	0.0	0.0	0.0	0.0	0.0	0.0	0.0	0.0	0	0.0	0.0	0.0	0.0	0.0	0.0	0.0

<sup>a</sup> pats=patients patdays=patient days NP=Nosocomial Pneumonia; IAP=Intubation Associated NP  
<sup>b</sup> #=#crude number; pats/patdays %=percentage of total pats/patdays; NP %=# NP /100 patients; NP incid = # NP / 1000 patientdays; IAP incid = # NP / 1000 intubation days (before 1st NP); IUR=Intubation Utilization Rate, intubation days / 1000 patientdays



Table 25: Pneumonia and Invasive Device Exposure (c)

	pats <sup>a</sup>		patdays <sup>a</sup>		NP <sup>a</sup>										IAP <sup>a</sup>												
	# <sup>b</sup>	% <sup>b</sup>	# <sup>b</sup>	% <sup>b</sup>	# <sup>b</sup>	% <sup>b</sup>	agg	p10	p25	p50	p75	p90	incd <sup>b</sup>			agg	p10	p25	p50	p75	p90						
													agg	p10	p25							p50	p75	p90			
<b>Invasive Mechanical Ventilation</b>																											
0	379	61.7	3157	53.6	9	2.4	0.7	0.7	1.3	7.4	7.4	7.4	2.9	0.7	0.7	1.6	13.5	13.5	13.5	13.5	4	6.2	0.0	0.0	4.7	44.1	44.1
1	95	15.5	710	12.1	4	4.2	3.7	3.7	4.3	4.9	4.9	4.9	5.6	4.5	4.5	6.0	7.4	7.4	7.4	7.4	3	11.2	9.9	9.9	10.9	11.9	11.9
2/3	65	10.6	610	10.4	2	3.1	0.0	0.0	3.0	6.1	6.1	6.1	3.3	0.0	0.0	3.0	6.0	6.0	6.0	6.0	2	5.3	0.0	0.0	4.7	9.4	9.4
4/6	41	6.7	704	11.9	5	12.2	6.3	6.3	11.1	16.0	16.0	16.0	7.1	3.8	3.8	6.4	9.0	9.0	9.0	9.0	5	10.2	5.8	5.8	9.2	12.5	12.5
>=7	34	5.5	711	12.1	1	2.9	0.0	0.0	2.1	4.2	4.2	4.2	1.4	0.0	0.0	1.0	1.9	1.9	1.9	1.9	1	1.8	0.0	0.0	1.2	2.4	2.4
<b>Non-Invasive Mechanical Ventilation</b>																											
0	490	79.8	4708	79.9	18	3.7	1.7	1.7	3.8	7.4	7.4	7.4	3.8	1.9	1.9	3.3	13.5	13.5	13.5	13.5	13	6.5	3.0	3.0	6.2	44.1	44.1
1	70	11.4	612	10.4	2	2.9	2.2	2.2	3.1	4.0	4.0	4.0	3.3	3.1	3.1	3.3	3.4	3.4	3.4	3.4	2	8.2	6.5	6.5	8.7	10.9	10.9
2/3	44	7.2	377	6.4	0	0.0	0.0	0.0	0.0	0.0	0.0	0.0	0.0	0.0	0.0	0.0	0.0	0.0	0.0	0.0	0	0.0	0.0	0.0	0.0	0.0	0.0
4/6	9	1.5	182	3.1	1	11.1	0.0	0.0	25.0	50.0	50.0	50.0	5.5	0.0	0.0	5.0	9.9	9.9	9.9	9.9	0	0.0	0.0	0.0	0.0	0.0	0.0
>=7	1	0.2	13	0.2	0	0.0	0.0	0.0	0.0	0.0	0.0	0.0	0.0	0.0	0.0	0.0	0.0	0.0	0.0	0.0	0	0.0	0.0	0.0	0.0	0.0	0.0
<b>Tracheotomy Intubation</b>																											
0	599	97.6	5659	96.0	21	3.5	2.0	2.0	3.7	7.4	7.4	7.4	3.7	2.3	2.3	3.3	13.5	13.5	13.5	13.5	15	6.9	3.9	3.9	6.8	44.1	44.1
1	0	0.0	0	0.0	0	0.0	0.0	0.0	0.0	0.0	0.0	0.0	0.0	0.0	0.0	0.0	0.0	0.0	0.0	0.0	0	0.0	0.0	0.0	0.0	0.0	0.0
2/3	6	1.0	42	0.7	0	0.0	0.0	0.0	0.0	0.0	0.0	0.0	0.0	0.0	0.0	0.0	0.0	0.0	0.0	0.0	0	0.0	0.0	0.0	0.0	0.0	0.0
4/6	3	0.5	37	0.6	0	0.0	0.0	0.0	0.0	0.0	0.0	0.0	0.0	0.0	0.0	0.0	0.0	0.0	0.0	0.0	0	0.0	0.0	0.0	0.0	0.0	0.0
>=7	6	1.0	154	2.6	0	0.0	0.0	0.0	0.0	0.0	0.0	0.0	0.0	0.0	0.0	0.0	0.0	0.0	0.0	0.0	0	0.0	0.0	0.0	0.0	0.0	0.0

<sup>a</sup> pats=patients patdays=patient days NP=Nosocomial Pneumonia; IAP=Intubation Associated NP

<sup>b</sup> #=#crude number; pats/patdays %=percentage of total pats/patdays; NP %=# NP /100 patients; NP incid = # NP / 1000 patientdays; IAP incid = # NP / 1000 intubation days (before 1st NP); IUR=Intubation Utilization Rate, intubation days / 1000 patientdays



Table 26: Bloodstream Infection and Invasive Device Exposure (a)

	pats <sup>a</sup>				patdays <sup>a</sup>				NB <sup>a</sup>								CAB <sup>a</sup>													
	# <sup>b</sup>		% <sup>b</sup>		# <sup>b</sup>		% <sup>b</sup>		# <sup>b</sup>	agg	p10	p25	p50	p75	p90	incd <sup>b</sup>				# <sup>b</sup>	agg	p10	p25	p50	p75	p90				
	agg	agg	agg	agg	agg	agg	agg	agg								p10	p25	p50	p75								p90	agg	agg	agg
<b>Intubation</b>																														
0	362	59.0	3007	51.0	6	1.7	0.7	0.7	1.4	2.8	2.8	0.6	2.9	3.7	3.7	5	2.9	1.0	1.0	1.0	5.9	6.8	6.8	6.8	6.8	6.8	6.8	6.8	6.8	6.8
1	99	16.1	701	11.9	6	6.1	0.0	0.0	2.0	12.5	12.5	0.0	2.7	17.0	17.0	6	10.0	0.0	0.0	0.0	3.1	21.2	21.2	21.2	21.2	21.2	21.2	21.2	21.2	21.2
2/3	69	11.2	642	10.9	2	2.9	0.0	0.0	0.0	5.3	5.3	0.0	0.0	5.2	5.2	1	2.0	0.0	0.0	0.0	0.0	3.2	3.2	3.2	3.2	3.2	3.2	3.2	3.2	3.2
4/6	45	7.3	620	10.5	4	8.9	0.0	0.0	4.0	15.8	15.8	0.0	2.9	11.4	11.4	4	6.8	0.0	0.0	0.0	3.0	12.5	12.5	12.5	12.5	12.5	12.5	12.5	12.5	12.5
>=7	39	6.4	922	15.6	5	12.8	10.0	10.0	10.7	100.0	100.0	4.3	5.2	33.3	33.3	5	6.3	5.0	5.0	5.0	6.0	35.7	35.7	35.7	35.7	35.7	35.7	35.7	35.7	35.7
<b>Central Vascular Catheter</b>																														
0	229	37.3	1933	32.8	2	0.9	0.0	0.0	0.0	2.0	2.0	0.0	0.0	2.9	2.9	0	0.0	0.0	0.0	0.0	0.0	0.0	0.0	0.0	0.0	0.0	0.0	0.0	0.0	0.0
1	26	4.2	182	3.1	6	23.1	0.0	0.0	0.0	42.9	42.9	0.0	0.0	44.4	44.4	6	39.2	0.0	0.0	0.0	4.3	49.2	49.2	49.2	49.2	49.2	49.2	49.2	49.2	49.2
2/3	202	32.9	1347	22.9	5	2.5	2.0	2.0	2.6	4.2	4.2	2.8	3.8	8.0	8.0	5	4.4	3.6	3.6	3.6	4.3	8.4	8.4	8.4	8.4	8.4	8.4	8.4	8.4	8.4
4/6	95	15.5	1102	18.7	5	5.3	0.0	0.0	2.1	9.3	9.3	0.0	2.0	7.3	7.3	5	5.3	0.0	0.0	0.0	2.2	9.0	9.0	9.0	9.0	9.0	9.0	9.0	9.0	9.0
>=7	62	10.1	1328	22.5	5	8.1	5.6	5.6	7.0	100.0	100.0	3.0	3.1	33.3	33.3	5	4.0	3.0	3.0	3.4	35.7	35.7	35.7	35.7	35.7	35.7	35.7	35.7	35.7	35.7
<b>Urinary Catheter</b>																														
0	160	26.1	1545	26.2	0	0.0	0.0	0.0	0.0	0.0	0.0	0.0	0.0	0.0	0.0	0	0.0	0.0	0.0	0.0	0.0	0.0	0.0	0.0	0.0	0.0	0.0	0.0	0.0	0.0
1	34	5.5	236	4.0	7	20.6	0.0	0.0	0.0	41.2	41.2	0.0	0.0	40.9	40.9	6	33.3	0.0	0.0	0.0	4.7	42.0	42.0	42.0	42.0	42.0	42.0	42.0	42.0	42.0
2/3	258	42.0	1627	27.6	6	2.3	1.6	1.6	2.9	3.2	3.2	2.6	4.3	6.1	6.1	5	4.9	4.1	4.1	4.1	4.7	8.8	8.8	8.8	8.8	8.8	8.8	8.8	8.8	8.8
4/6	92	15.0	983	16.7	5	5.4	0.0	0.0	1.9	11.4	11.4	0.0	1.8	9.7	9.7	5	6.1	0.0	0.0	0.0	2.3	11.3	11.3	11.3	11.3	11.3	11.3	11.3	11.3	11.3
>=7	70	11.4	1501	25.5	5	7.1	5.8	5.8	6.3	50.0	50.0	2.7	2.7	22.7	22.7	5	4.1	3.2	3.2	3.9	27.0	27.0	27.0	27.0	27.0	27.0	27.0	27.0	27.0	27.0

<sup>a</sup> pats=patients patdays=patient days NB=Nosocomial Bacteremia; CAB=Catheter Associated NB

<sup>b</sup> #=#crude number; pats/patdays %=percentage of total pats/patdays; NB %=# NB /100 patients; NB incd = # NB / 1000 patientdays; CAB incd = # NP / 1000 Catheter days (before 1st NB);



Table 27: Bloodstream Infection and Invasive Device Exposure (b)

		NB <sup>a</sup>										CAB <sup>a</sup>											
pats <sup>a</sup>		patdays <sup>a</sup>					% <sup>b</sup>					incd <sup>b</sup>					# <sup>b</sup>						
# <sup>b</sup>	% <sup>b</sup>	agg	agg	agg	agg	p10	p25	p50	p75	p90	agg	p10	p25	p50	p75	p90	agg	p10	p25	p50	p75	p90	
<b>Naso Oro Intestinal Tube without feeding</b>																							
0	362	59.0	3123	53.0	7	1.9	0.8	0.8	0.8	0.8	2.2	0.7	0.7	3.2	3.5	3.5	5	2.7	1.2	1.2	3.5	7.6	7.6
1	103	16.8	942	16.0	10	9.7	0.0	0.0	2.7	15.8	10.6	0.0	0.0	3.4	14.9	14.9	10	14.3	0.0	0.0	4.0	21.3	21.3
2/3	85	13.8	673	11.4	2	2.4	0.0	0.0	10.0	12.5	3.0	0.0	0.0	8.5	12.7	12.7	2	3.4	0.0	0.0	9.2	15.9	15.9
4/6	33	5.4	407	6.9	1	3.0	0.0	0.0	0.0	3.8	2.5	0.0	0.0	3.0	3.0	3.0	1	2.7	0.0	0.0	0.0	3.3	3.3
>=7	31	5.0	747	12.7	3	9.7	9.7	9.7	9.7	9.7	4.0	4.0	4.0	4.0	4.0	4.0	3	4.4	4.4	4.4	4.4	4.4	4.4
<b>Naso Oro Intestinal Tube with feeding</b>																							
0	455	74.1	3683	62.5	8	1.8	1.3	1.3	1.3	2.7	2.2	1.3	1.3	2.4	4.0	4.0	7	3.0	1.8	1.8	4.9	5.8	5.8
1	34	5.5	330	5.6	3	8.8	0.0	0.0	0.0	11.5	9.1	0.0	0.0	0.0	13.2	13.2	3	11.3	0.0	0.0	0.0	16.0	16.0
2/3	62	10.1	619	10.5	2	3.2	0.0	0.0	2.7	5.4	3.2	0.0	0.0	3.2	6.3	6.3	1	1.9	0.0	0.0	2.1	4.3	4.3
4/6	40	6.5	689	11.7	5	12.5	0.0	0.0	10.4	20.8	7.3	0.0	0.0	6.2	12.3	12.3	5	9.5	0.0	0.0	9.0	17.9	17.9
>=7	23	3.7	571	9.7	5	21.7	7.1	7.1	37.5	100.0	8.8	3.7	3.7	11.1	33.3	33.3	5	9.5	4.1	4.1	11.8	35.7	35.7
<b>Parenteral Nutrition</b>																							
0	524	85.3	4412	74.9	16	3.1	1.0	1.0	1.3	5.5	3.6	1.0	1.0	2.4	6.5	6.5	14	4.6	1.3	1.3	5.0	8.4	8.4
1	19	3.1	316	5.4	3	15.8	0.0	0.0	12.5	50.0	9.5	0.0	0.0	7.8	19.2	19.2	3	17.1	0.0	0.0	15.9	23.3	23.3
2/3	41	6.7	495	8.4	1	2.4	0.0	0.0	1.5	3.0	2.0	0.0	0.0	1.2	2.3	2.3	1	2.3	0.0	0.0	1.4	2.7	2.7
4/6	19	3.1	394	6.7	2	10.5	0.0	0.0	33.3	100.0	5.1	0.0	0.0	8.8	33.3	33.3	2	7.0	0.0	0.0	23.3	35.7	35.7
>=7	11	1.8	275	4.7	1	9.1	9.1	9.1	9.1	9.1	3.6	3.6	3.6	3.6	3.6	3.6	1	3.9	3.9	3.9	3.9	3.9	3.9

<sup>a</sup> pats=patients patdays=patient days NB=Nosocomial Bacteremia; CAB=Catheter Associated NB

<sup>b</sup> #=#crude number; pats/patdays %=percentage of total pats/patdays; NB %=# NB /100 patients; NB incd = # NB / 1000 patientdays; CAB incd = # NP / 1000 Catheter days (before 1st NB);



Table 28: Bloodstream Infection and Invasive Device Exposure (c)

		pats <sup>a</sup>						patdays <sup>a</sup>						NB <sup>a</sup>						CAB <sup>a</sup>							
		# <sup>b</sup>			% <sup>b</sup>			# <sup>b</sup>			% <sup>b</sup>			# <sup>b</sup>			% <sup>b</sup>			# <sup>b</sup>			% <sup>b</sup>				
		agg	agg	agg	p10	p25	p50	p75	p90	agg	agg	agg	p10	p25	p50	p75	p90	agg	agg	agg	p10	p25	p50	p75	p90		
<b>Invasive Mechanical Ventilation</b>																											
0	374	60.9	3068	52.1	6	1.6	0.7	0.7	2.1	2.5	2.5	2.0	0.6	0.6	3.0	4.5	4.5	5	2.8	0.9	0.9	4.1	4.1	8.6	8.6		
1	97	15.8	729	12.4	6	6.2	1.9	1.9	6.6	11.4	11.4	8.2	2.5	2.5	8.9	15.3	15.3	6	9.6	2.8	2.8	10.8	10.8	18.9	18.9		
2/3	65	10.6	611	10.4	2	3.1	0.0	0.0	2.9	5.9	5.9	3.3	0.0	0.0	2.9	5.8	5.8	1	2.0	0.0	0.0	1.8	1.8	3.6	3.6		
4/6	40	6.5	542	9.2	4	10.0	4.5	4.5	10.6	16.7	16.7	7.4	3.4	3.4	7.7	11.9	11.9	4	8.0	3.7	3.7	8.4	8.4	13.2	13.2		
>=7	38	6.2	942	16.0	5	13.2	11.5	11.5	14.1	16.7	16.7	5.3	4.7	4.7	5.6	6.6	6.6	5	6.6	5.4	5.4	7.5	7.5	9.6	9.6		
<b>Non-Invasive Mechanical Ventilation</b>																											
0	490	79.8	4696	79.7	20	4.1	2.1	2.1	2.5	7.5	7.5	4.3	1.9	1.9	4.5	8.2	8.2	19	5.4	2.3	2.3	8.6	8.6	10.3	10.3		
1	70	11.4	624	10.6	2	2.9	2.2	2.2	3.1	4.0	4.0	3.2	2.9	2.9	3.2	3.5	3.5	1	2.5	0.0	0.0	2.1	2.1	4.1	4.1		
2/3	44	7.2	377	6.4	0	0.0	0.0	0.0	0.0	0.0	0.0	0.0	0.0	0.0	0.0	0.0	0.0	0	0.0	0.0	0.0	0.0	0.0	0.0	0.0		
4/6	9	1.5	182	3.1	1	11.1	0.0	0.0	25.0	50.0	50.0	5.5	0.0	0.0	5.0	9.9	9.9	1	13.5	0.0	0.0	16.1	16.1	32.3	32.3		
>=7	1	0.2	13	0.2	0	0.0	0.0	0.0	0.0	0.0	0.0	0.0	0.0	0.0	0.0	0.0	0.0	0	0.0	0.0	0.0	0.0	0.0	0.0	0.0		
<b>Tracheotomy Intubation</b>																											
0	597	97.2	5504	93.4	21	3.5	1.9	1.9	2.5	5.7	5.7	3.8	1.7	1.7	4.5	6.8	6.8	19	4.9	2.2	2.2	8.6	8.6	8.6	8.6		
1	0	0.0	0	0.0	0	0.0	0.0	0.0	0.0	0.0	0.0	0.0	0.0	0.0	0.0	0.0	0.0	0	0.0	0.0	0.0	0.0	0.0	0.0	0.0		
2/3	6	1.0	42	0.7	0	0.0	0.0	0.0	0.0	0.0	0.0	0.0	0.0	0.0	0.0	0.0	0.0	0	0.0	0.0	0.0	0.0	0.0	0.0	0.0		
4/6	3	0.5	37	0.6	0	0.0	0.0	0.0	0.0	0.0	0.0	0.0	0.0	0.0	0.0	0.0	0.0	0	0.0	0.0	0.0	0.0	0.0	0.0	0.0		
>=7	8	1.3	309	5.2	2	25.0	20.0	20.0	26.7	33.3	33.3	6.5	5.9	5.9	6.5	7.1	7.1	2	9.0	6.5	6.5	10.7	10.7	14.9	14.9		

<sup>a</sup> pats=patients patdays=patient days NB=Nosocomial Bacteremia; CAB=Catheter Associated NB

<sup>b</sup> #=#crude number; pats/patdays %=percentage of total pats/patdays; NB %=# NB /100 patients; NB incid = # NB / 1000 patientdays; CAB incid = # NP / 1000 Catheter days (before 1st NB);



Table 29: Pneumonia and SOFAScore (a)

		pats <sup>a</sup>						patdays <sup>a</sup>						NP <sup>a</sup>						IAP <sup>a</sup>																			
		# <sup>b</sup>			% <sup>b</sup>			# <sup>b</sup>			% <sup>b</sup>			# <sup>b</sup>			% <sup>b</sup>			# <sup>b</sup>			% <sup>b</sup>			# <sup>b</sup>			% <sup>b</sup>										
		agg	agg	agg	agg	agg	agg	agg	agg	agg	agg	agg	agg	agg	agg	agg	agg	agg	agg	agg	agg	agg	agg	agg	agg	agg	agg	agg	agg	agg	agg	agg	agg	agg					
<b>mean CNS SOFA score</b>																																							
0	164	6.6	1347	7.2	2	1.2	1.2	1.2	1.2	1.2	1.2	1.2	1.5	1.5	1.5	1.5	1.5	1.5	1.5	1.5	1.5	1.5	1.5	1.5	1.5	1.5	1.5	1.5	1.5	1.5	1.5	1.5	1.5	1.5	1.5	1.5	1.5		
0.1/1	56	2.3	569	3.0	3	5.4	5.4	5.4	5.4	5.4	5.4	5.4	5.3	5.3	5.3	5.3	5.3	5.3	5.3	5.3	5.3	5.3	5.3	5.3	5.3	5.3	5.3	5.3	5.3	5.3	5.3	5.3	5.3	5.3	5.3	5.3	5.3	5.3	
1.1/2	16	0.6	131	0.7	0	0.0	0.0	0.0	0.0	0.0	0.0	0.0	0.0	0.0	0.0	0.0	0.0	0.0	0.0	0.0	0.0	0.0	0.0	0.0	0.0	0.0	0.0	0.0	0.0	0.0	0.0	0.0	0.0	0.0	0.0	0.0	0.0	0.0	
2.1/3	7	0.3	82	0.4	0	0.0	0.0	0.0	0.0	0.0	0.0	0.0	0.0	0.0	0.0	0.0	0.0	0.0	0.0	0.0	0.0	0.0	0.0	0.0	0.0	0.0	0.0	0.0	0.0	0.0	0.0	0.0	0.0	0.0	0.0	0.0	0.0	0.0	
3.1/4	6	0.2	54	0.3	0	0.0	0.0	0.0	0.0	0.0	0.0	0.0	0.0	0.0	0.0	0.0	0.0	0.0	0.0	0.0	0.0	0.0	0.0	0.0	0.0	0.0	0.0	0.0	0.0	0.0	0.0	0.0	0.0	0.0	0.0	0.0	0.0	0.0	
<b>mean Respiratory SOFA score</b>																																							
0	8	0.3	41	0.2	0	0.0	0.0	0.0	0.0	0.0	0.0	0.0	0.0	0.0	0.0	0.0	0.0	0.0	0.0	0.0	0.0	0.0	0.0	0.0	0.0	0.0	0.0	0.0	0.0	0.0	0.0	0.0	0.0	0.0	0.0	0.0	0.0	0.0	
0.1/1	40	1.6	254	1.4	0	0.0	0.0	0.0	0.0	0.0	0.0	0.0	0.0	0.0	0.0	0.0	0.0	0.0	0.0	0.0	0.0	0.0	0.0	0.0	0.0	0.0	0.0	0.0	0.0	0.0	0.0	0.0	0.0	0.0	0.0	0.0	0.0	0.0	
1.1/2	119	4.8	1107	5.9	2	1.7	1.7	1.7	1.7	1.7	1.7	1.7	1.8	1.8	1.8	1.8	1.8	1.8	1.8	1.8	1.8	1.8	1.8	1.8	1.8	1.8	1.8	1.8	1.8	1.8	1.8	1.8	1.8	1.8	1.8	1.8	1.8	1.8	1.8
2.1/3	79	3.2	740	4.0	3	3.8	3.8	3.8	3.8	3.8	3.8	3.8	4.1	4.1	4.1	4.1	4.1	4.1	4.1	4.1	4.1	4.1	4.1	4.1	4.1	4.1	4.1	4.1	4.1	4.1	4.1	4.1	4.1	4.1	4.1	4.1	4.1	4.1	
3.1/4	3	0.1	41	0.2	0	0.0	0.0	0.0	0.0	0.0	0.0	0.0	0.0	0.0	0.0	0.0	0.0	0.0	0.0	0.0	0.0	0.0	0.0	0.0	0.0	0.0	0.0	0.0	0.0	0.0	0.0	0.0	0.0	0.0	0.0	0.0	0.0	0.0	
<b>mean Coagulation SOFA score</b>																																							
0	168	6.8	1357	7.3	3	1.8	1.8	1.8	1.8	1.8	1.8	1.8	2.2	2.2	2.2	2.2	2.2	2.2	2.2	2.2	2.2	2.2	2.2	2.2	2.2	2.2	2.2	2.2	2.2	2.2	2.2	2.2	2.2	2.2	2.2	2.2	2.2	2.2	
0.1/1	45	1.8	456	2.4	1	2.2	2.2	2.2	2.2	2.2	2.2	2.2	2.2	2.2	2.2	2.2	2.2	2.2	2.2	2.2	2.2	2.2	2.2	2.2	2.2	2.2	2.2	2.2	2.2	2.2	2.2	2.2	2.2	2.2	2.2	2.2	2.2	2.2	
1.1/2	24	1.0	225	1.2	1	4.2	4.2	4.2	4.2	4.2	4.2	4.2	4.4	4.4	4.4	4.4	4.4	4.4	4.4	4.4	4.4	4.4	4.4	4.4	4.4	4.4	4.4	4.4	4.4	4.4	4.4	4.4	4.4	4.4	4.4	4.4	4.4	4.4	
2.1/3	10	0.4	154	0.8	0	0.0	0.0	0.0	0.0	0.0	0.0	0.0	0.0	0.0	0.0	0.0	0.0	0.0	0.0	0.0	0.0	0.0	0.0	0.0	0.0	0.0	0.0	0.0	0.0	0.0	0.0	0.0	0.0	0.0	0.0	0.0	0.0	0.0	
3.1/4	3	0.1	17	0.1	0	0.0	0.0	0.0	0.0	0.0	0.0	0.0	0.0	0.0	0.0	0.0	0.0	0.0	0.0	0.0	0.0	0.0	0.0	0.0	0.0	0.0	0.0	0.0	0.0	0.0	0.0	0.0	0.0	0.0	0.0	0.0	0.0	0.0	

<sup>a</sup> pats=patients patdays=patient days NP=Nosocomial Pneumonia; IAP=Intubation Associated NP  
<sup>b</sup> #=#crude number; pats/patdays %=percentage of total pats/patdays; NP %= # NP /100 patients; NP incid = # NP / 1000 patientdays; IAP incid = # NP / 1000 intubation days (before 1st NP);



Table 30: Pneumonia and SOFAscore (b)

		N <sup>a</sup>						IAP <sup>a</sup>													
pats <sup>a</sup>		patdays <sup>a</sup>			incd <sup>b</sup>			incd <sup>b</sup>			incd <sup>b</sup>										
# <sup>b</sup>	% <sup>b</sup>	agg	agg	agg	# <sup>b</sup>	% <sup>b</sup>	p10	p25	p50	p75	p90	agg	agg	agg	# <sup>b</sup>	p10	p25	p50	p75	p90	
<b>mean Cardiovascular SOFA score</b>																					
0	116	4.7	798	4.3	3	2.6	2.6	2.6	2.6	2.6	2.6	3.8	3.8	3.8	3.8	3.8	8.1	8.1	8.1	8.1	8.1
0.1/1	72	2.9	838	4.5	1	1.4	1.4	1.4	1.4	1.4	1.4	1.2	1.2	1.2	1.2	1.2	2.9	2.9	2.9	2.9	2.9
1.1/2	38	1.5	325	1.7	1	2.6	2.6	2.6	2.6	2.6	2.6	3.1	3.1	3.1	3.1	3.1	6.3	6.3	6.3	6.3	6.3
2.1/3	18	0.7	187	1.0	0	0.0	0.0	0.0	0.0	0.0	0.0	0.0	0.0	0.0	0.0	0.0	0.0	0.0	0.0	0.0	0.0
3.1/4	6	0.2	61	0.3	0	0.0	0.0	0.0	0.0	0.0	0.0	0.0	0.0	0.0	0.0	0.0	0.0	0.0	0.0	0.0	0.0
<b>mean Renal SOFA score</b>																					
0	95	3.8	758	4.1	2	2.1	2.1	2.1	2.1	2.1	2.1	2.6	2.6	2.6	2.6	2.6	4.9	4.9	4.9	4.9	4.9
0.1/1	63	2.5	531	2.8	1	1.6	1.6	1.6	1.6	1.6	1.6	1.9	1.9	1.9	1.9	1.9	0.0	0.0	0.0	0.0	0.0
1.1/2	40	1.6	359	1.9	1	2.5	2.5	2.5	2.5	2.5	2.5	2.8	2.8	2.8	2.8	2.8	7.2	7.2	7.2	7.2	7.2
2.1/3	20	0.8	169	0.9	0	0.0	0.0	0.0	0.0	0.0	0.0	0.0	0.0	0.0	0.0	0.0	0.0	0.0	0.0	0.0	0.0
3.1/4	32	1.3	392	2.1	1	3.1	3.1	3.1	3.1	3.1	3.1	2.6	2.6	2.6	2.6	2.6	5.6	5.6	5.6	5.6	5.6
<b>mean Liver SOFA score</b>																					
0	182	7.3	1499	8.0	5	2.7	2.7	2.7	2.7	2.7	2.7	3.3	3.3	3.3	3.3	3.3	6.3	6.3	6.3	6.3	6.3
0.1/1	46	1.9	441	2.4	0	0.0	0.0	0.0	0.0	0.0	0.0	0.0	0.0	0.0	0.0	0.0	0.0	0.0	0.0	0.0	0.0
1.1/2	14	0.6	133	0.7	0	0.0	0.0	0.0	0.0	0.0	0.0	0.0	0.0	0.0	0.0	0.0	0.0	0.0	0.0	0.0	0.0
2.1/3	3	0.1	26	0.1	0	0.0	0.0	0.0	0.0	0.0	0.0	0.0	0.0	0.0	0.0	0.0	0.0	0.0	0.0	0.0	0.0
3.1/4	3	0.1	27	0.1	0	0.0	0.0	0.0	0.0	0.0	0.0	0.0	0.0	0.0	0.0	0.0	0.0	0.0	0.0	0.0	0.0
<b>mean Total SOFA score</b>																					
0/1	21	0.8	198	1.1	1	4.8	4.8	4.8	4.8	4.8	4.8	5.1	5.1	5.1	5.1	5.1	0.0	0.0	0.0	0.0	0.0
2	46	1.9	354	1.9	0	0.0	0.0	0.0	0.0	0.0	0.0	0.0	0.0	0.0	0.0	0.0	0.0	0.0	0.0	0.0	0.0
3/4	86	3.5	706	3.8	2	2.3	2.3	2.3	2.3	2.3	2.3	2.8	2.8	2.8	2.8	2.8	8.1	8.1	8.1	8.1	8.1
5/6	52	2.1	423	2.3	1	1.9	1.9	1.9	1.9	1.9	1.9	2.4	2.4	2.4	2.4	2.4	0.0	0.0	0.0	0.0	0.0
7/max	45	1.8	528	2.8	1	2.2	2.2	2.2	2.2	2.2	2.2	1.9	1.9	1.9	1.9	1.9	3.4	3.4	3.4	3.4	3.4

<sup>a</sup> pats=patients patdays=patient days NP=Nosocomial Pneumonia; IAP=Intubation Associated NP

<sup>b</sup> #=#crude number; pats/patdays %=percentage of total pats/patdays; NP %=# NP /100 patients; NP incid = # NP / 1000 intubation days (before 1st NP);



Table 31: Bloodstream Infections and SOFAScore (a)

	pats <sup>a</sup>				patdays <sup>a</sup>				NB <sup>a</sup>										CAB <sup>a</sup>							
	# <sup>b</sup>		% <sup>b</sup>		# <sup>b</sup>		% <sup>b</sup>		incd <sup>b</sup>					# <sup>b</sup>					incd <sup>b</sup>							
	agg	agg	agg	agg	agg	agg	agg	agg	p10	p25	p50	p75	p90	agg	p10	p25	p50	p75	p90	agg	p10	p25	p50	p75	p90	
<b>mean CNS SOFA score</b>																										
0	163	6.6	1222	6.5	7	4.3	4.3	4.3	4.3	4.3	4.3	4.3	4.3	5.7	5.7	5.7	5.7	5.7	5.7	6	7.6	7.6	7.6	7.6	7.6	7.6
0.1/1	55	2.2	593	3.2	5	9.1	9.1	9.1	9.1	9.1	9.1	9.1	9.1	8.4	8.4	8.4	8.4	8.4	8.4	5	12.1	12.1	12.1	12.1	12.1	12.1
1.1/2	16	0.6	153	0.8	1	6.3	6.3	6.3	6.3	6.3	6.3	6.3	6.3	6.5	6.5	6.5	6.5	6.5	6.5	1	8.5	8.5	8.5	8.5	8.5	8.5
2.1/3	8	0.3	98	0.5	2	25.0	25.0	25.0	25.0	25.0	25.0	25.0	25.0	20.4	20.4	20.4	20.4	20.4	20.4	1	16.9	16.9	16.9	16.9	16.9	16.9
3.1/4	6	0.2	54	0.3	0	0.0	0.0	0.0	0.0	0.0	0.0	0.0	0.0	0.0	0.0	0.0	0.0	0.0	0.0	0	0.0	0.0	0.0	0.0	0.0	0.0
<b>mean Respiratory SOFA score</b>																										
0	8	0.3	41	0.2	0	0.0	0.0	0.0	0.0	0.0	0.0	0.0	0.0	0.0	0.0	0.0	0.0	0.0	0.0	0	0.0	0.0	0.0	0.0	0.0	0.0
0.1/1	42	1.7	292	1.6	3	7.1	7.1	7.1	7.1	7.1	7.1	7.1	7.1	10.3	10.3	10.3	10.3	10.3	10.3	3	17.1	17.1	17.1	17.1	17.1	17.1
1.1/2	116	4.7	979	5.2	6	5.2	5.2	5.2	5.2	5.2	5.2	5.2	5.2	6.1	6.1	6.1	6.1	6.1	6.1	5	7.4	7.4	7.4	7.4	7.4	7.4
2.1/3	81	3.3	850	4.5	6	7.4	7.4	7.4	7.4	7.4	7.4	7.4	7.4	7.1	7.1	7.1	7.1	7.1	7.1	5	9.9	9.9	9.9	9.9	9.9	9.9
3.1/4	2	0.1	21	0.1	0	0.0	0.0	0.0	0.0	0.0	0.0	0.0	0.0	0.0	0.0	0.0	0.0	0.0	0.0	0	0.0	0.0	0.0	0.0	0.0	0.0
<b>mean Coagulation SOFA score</b>																										
0	168	6.8	1312	7.0	8	4.8	4.8	4.8	4.8	4.8	4.8	4.8	4.8	6.1	6.1	6.1	6.1	6.1	6.1	6	8.5	8.5	8.5	8.5	8.5	8.5
0.1/1	47	1.9	574	3.1	5	10.6	10.6	10.6	10.6	10.6	10.6	10.6	10.6	8.7	8.7	8.7	8.7	8.7	8.7	5	11.9	11.9	11.9	11.9	11.9	11.9
1.1/2	25	1.0	233	1.2	1	4.0	4.0	4.0	4.0	4.0	4.0	4.0	4.0	4.3	4.3	4.3	4.3	4.3	4.3	1	4.1	4.1	4.1	4.1	4.1	4.1
2.1/3	8	0.3	81	0.4	1	12.5	12.5	12.5	12.5	12.5	12.5	12.5	12.5	12.3	12.3	12.3	12.3	12.3	12.3	1	13.9	13.9	13.9	13.9	13.9	13.9
3.1/4	2	0.1	9	0.0	0	0.0	0.0	0.0	0.0	0.0	0.0	0.0	0.0	0.0	0.0	0.0	0.0	0.0	0.0	0	0.0	0.0	0.0	0.0	0.0	0.0

<sup>a</sup> pats=patients patdays=patient days NB=Nosocomial Bacteremia; CAB=Catheter Associated NB

<sup>b</sup> #=#crude number; pats/patdays %=percentage of total pats/patdays; NB %=# NB /100 patients; NB incd = # NB / 1000 patientdays; CAB incd = # NP / 1000 Catheter days (before 1st NB);





Table 32: Bloodstream Infections and SOFAScore (b)

	pats <sup>a</sup>				patdays <sup>a</sup>				NB <sup>a</sup>										CAB <sup>a</sup>								
	# <sup>b</sup>		% <sup>b</sup>		# <sup>b</sup>		% <sup>b</sup>		incd <sup>b</sup>					incd <sup>b</sup>					# <sup>b</sup>								
	agg	agg	agg	agg	agg	agg	agg	agg	p10	p25	p50	p75	p90	agg	p10	p25	p50	p75	p90	agg	agg	p10	p25	p50	p75	p90	
<b>mean Cardiovascular SOFA score</b>																											
0	116	4.7	746	4.0	4	3.4	3.4	3.4	3.4	3.4	3.4	3.4	3.4	5.4	5.4	5.4	5.4	5.4	5.4	5.4	2	7.5	7.5	7.5	7.5	7.5	7.5
0.1/1	70	2.8	804	4.3	4	5.7	5.7	5.7	5.7	5.7	5.7	5.7	5.7	5.0	5.0	5.0	5.0	5.0	5.0	5.0	4	7.1	7.1	7.1	7.1	7.1	7.1
1.1/2	37	1.5	345	1.8	2	5.4	5.4	5.4	5.4	5.4	5.4	5.4	5.4	5.8	5.8	5.8	5.8	5.8	5.8	5.8	2	6.1	6.1	6.1	6.1	6.1	6.1
2.1/3	20	0.8	190	1.0	4	20.0	20.0	20.0	20.0	20.0	20.0	20.0	20.0	21.1	21.1	21.1	21.1	21.1	21.1	21.1	4	20.2	20.2	20.2	20.2	20.2	20.2
3.1/4	6	0.2	61	0.3	1	16.7	16.7	16.7	16.7	16.7	16.7	16.7	16.7	16.4	16.4	16.4	16.4	16.4	16.4	16.4	1	16.4	16.4	16.4	16.4	16.4	16.4
<b>mean Renal SOFA score</b>																											
0	96	3.9	803	4.3	5	5.2	5.2	5.2	5.2	5.2	5.2	5.2	5.2	6.2	6.2	6.2	6.2	6.2	6.2	3	7.3	7.3	7.3	7.3	7.3	7.3	
0.1/1	64	2.6	559	3.0	5	7.8	7.8	7.8	7.8	7.8	7.8	7.8	7.8	8.9	8.9	8.9	8.9	8.9	8.9	8.9	5	14.1	14.1	14.1	14.1	14.1	14.1
1.1/2	40	1.6	359	1.9	2	5.0	5.0	5.0	5.0	5.0	5.0	5.0	5.0	5.6	5.6	5.6	5.6	5.6	5.6	5.6	2	9.0	9.0	9.0	9.0	9.0	9.0
2.1/3	18	0.7	117	0.6	0	0.0	0.0	0.0	0.0	0.0	0.0	0.0	0.0	0.0	0.0	0.0	0.0	0.0	0.0	0.0	0	0.0	0.0	0.0	0.0	0.0	0.0
3.1/4	32	1.3	371	2.0	3	9.4	9.4	9.4	9.4	9.4	9.4	9.4	9.4	8.1	8.1	8.1	8.1	8.1	8.1	8.1	3	8.2	8.2	8.2	8.2	8.2	8.2
<b>mean Liver SOFA score</b>																											
0	183	7.4	1507	8.1	8	4.4	4.4	4.4	4.4	4.4	4.4	4.4	4.4	5.3	5.3	5.3	5.3	5.3	5.3	7	8.1	8.1	8.1	8.1	8.1	8.1	
0.1/1	48	1.9	504	2.7	6	12.5	12.5	12.5	12.5	12.5	12.5	12.5	12.5	11.9	11.9	11.9	11.9	11.9	11.9	11.9	5	12.9	12.9	12.9	12.9	12.9	12.9
1.1/2	13	0.5	145	0.8	1	7.7	7.7	7.7	7.7	7.7	7.7	7.7	7.7	6.9	6.9	6.9	6.9	6.9	6.9	6.9	1	6.6	6.6	6.6	6.6	6.6	6.6
2.1/3	3	0.1	26	0.1	0	0.0	0.0	0.0	0.0	0.0	0.0	0.0	0.0	0.0	0.0	0.0	0.0	0.0	0.0	0.0	0	0.0	0.0	0.0	0.0	0.0	0.0
3.1/4	3	0.1	27	0.1	0	0.0	0.0	0.0	0.0	0.0	0.0	0.0	0.0	0.0	0.0	0.0	0.0	0.0	0.0	0.0	0	0.0	0.0	0.0	0.0	0.0	0.0
<b>mean Total SOFA score</b>																											
0/1	20	0.8	108	0.6	0	0.0	0.0	0.0	0.0	0.0	0.0	0.0	0.0	0.0	0.0	0.0	0.0	0.0	0.0	0.0	0	0.0	0.0	0.0	0.0	0.0	0.0
2	44	1.8	375	2.0	1	2.3	2.3	2.3	2.3	2.3	2.3	2.3	2.3	2.7	2.7	2.7	2.7	2.7	2.7	2.7	1	8.1	8.1	8.1	8.1	8.1	8.1
3/4	86	3.5	708	3.8	3	3.5	3.5	3.5	3.5	3.5	3.5	3.5	3.5	4.2	4.2	4.2	4.2	4.2	4.2	4.2	1	2.7	2.7	2.7	2.7	2.7	2.7
5/6	57	2.3	563	3.0	7	12.3	12.3	12.3	12.3	12.3	12.3	12.3	12.3	12.4	12.4	12.4	12.4	12.4	12.4	12.4	7	15.1	15.1	15.1	15.1	15.1	15.1
7/max	43	1.7	455	2.4	4	9.3	9.3	9.3	9.3	9.3	9.3	9.3	9.3	8.8	8.8	8.8	8.8	8.8	8.8	8.8	4	8.8	8.8	8.8	8.8	8.8	8.8

<sup>a</sup> pats=patients patdays=patient days NB=Nosocomial Bacteremia; CAB=Catheter Associated NB

<sup>b</sup> #=#crude number; pats/patdays %=percentage of total pats/patdays; NB %=# NB /100 patients; NB incd = # NB / 1000 patientdays; CAB incd = # NP / 1000 Catheter days (before 1st NB);



Table 33: Pneumonia and Antibiotic Use

	pats <sup>a</sup>				patdays <sup>a</sup>				NP <sup>a</sup>										IAP <sup>a</sup>						
	# <sup>b</sup>		% <sup>b</sup>		# <sup>b</sup>		% <sup>b</sup>		# <sup>b</sup>		% <sup>b</sup>		# <sup>b</sup>		% <sup>b</sup>		# <sup>b</sup>		% <sup>b</sup>		# <sup>b</sup>		% <sup>b</sup>		
	agg	agg	agg	agg	agg	agg	agg	agg	agg	agg	agg	agg	agg	agg	agg	agg	agg	agg	agg	agg	agg	agg	agg	agg	
<b>total Antibiotic Use days</b>																									
0	142	5.7	1436	7.7	1	0.7	0.0	0.0	0.7	1.4	1.4	0.7	0.0	0.0	0.8	1.5	1.5	0	0.0	0.0	0.0	0.0	0.0	0.0	0.0
1	9	0.4	52	0.3	0	0.0	0.0	0.0	0.0	0.0	0.0	0.0	0.0	0.0	0.0	0.0	0.0	0	0.0	0.0	0.0	0.0	0.0	0.0	0.0
2/3	30	1.2	213	1.1	2	6.7	0.0	0.0	6.3	12.5	12.5	9.4	0.0	0.0	7.3	14.6	14.6	2	20.6	0.0	0.0	0.0	14.9	29.9	29.9
4/6	140	5.6	941	5.0	1	0.7	0.0	0.0	0.7	1.5	1.5	1.1	0.0	0.0	1.0	2.1	2.1	0	0.0	0.0	0.0	0.0	0.0	0.0	0.0
>=7	212	8.5	2805	15.0	11	5.2	4.7	4.7	5.1	5.6	5.6	3.9	3.9	3.9	3.9	4.0	4.0	10	7.1	7.0	7.0	7.1	7.2	7.2	
<b>SDD Antibiotic Use days</b>																									
0	533	21.5	5447	29.1	15	2.8	2.0	2.0	2.8	3.5	3.5	2.8	2.3	2.3	2.7	3.1	3.1	12	5.3	3.8	3.8	5.0	6.1	6.1	
1	0	0.0	0	0.0	0	0.0	0.0	0.0	0.0	0.0	0.0	0.0	0.0	0.0	0.0	0.0	0.0	0	0.0	0.0	0.0	0.0	0.0	0.0	
2/3	0	0.0	0	0.0	0	0.0	0.0	0.0	0.0	0.0	0.0	0.0	0.0	0.0	0.0	0.0	0.0	0	0.0	0.0	0.0	0.0	0.0	0.0	
4/6	0	0.0	0	0.0	0	0.0	0.0	0.0	0.0	0.0	0.0	0.0	0.0	0.0	0.0	0.0	0.0	0	0.0	0.0	0.0	0.0	0.0	0.0	
>=7	0	0.0	0	0.0	0	0.0	0.0	0.0	0.0	0.0	0.0	0.0	0.0	0.0	0.0	0.0	0.0	0	0.0	0.0	0.0	0.0	0.0	0.0	
<b>Prophylactic Antibiotic Use days</b>																									
0	506	20.4	5241	28.0	14	2.8	1.7	1.7	2.7	3.6	3.6	2.7	2.0	2.0	2.5	3.1	3.1	11	5.0	2.7	2.7	4.4	6.1	6.1	
1	10	0.4	55	0.3	0	0.0	0.0	0.0	0.0	0.0	0.0	0.0	0.0	0.0	0.0	0.0	0.0	0	0.0	0.0	0.0	0.0	0.0	0.0	
2/3	8	0.3	82	0.4	1	12.5	0.0	0.0	8.3	16.7	16.7	12.2	0.0	0.0	8.6	17.2	17.2	1	37.0	0.0	0.0	0.0	35.7	71.4	
4/6	7	0.3	47	0.3	0	0.0	0.0	0.0	0.0	0.0	0.0	0.0	0.0	0.0	0.0	0.0	0.0	0	0.0	0.0	0.0	0.0	0.0	0.0	
>=7	2	0.1	22	0.1	0	0.0	0.0	0.0	0.0	0.0	0.0	0.0	0.0	0.0	0.0	0.0	0.0	0	0.0	0.0	0.0	0.0	0.0	0.0	
<b>Empirical Antibiotic Use days</b>																									
0	206	8.3	2004	10.7	3	1.5	1.1	1.1	1.4	1.7	1.7	1.5	1.0	1.0	1.5	2.0	2.0	2	2.6	2.2	2.2	2.7	3.1	3.1	
1	13	0.5	115	0.6	0	0.0	0.0	0.0	0.0	0.0	0.0	0.0	0.0	0.0	0.0	0.0	0.0	0	0.0	0.0	0.0	0.0	0.0	0.0	
2/3	51	2.1	416	2.2	3	5.9	2.9	2.9	7.7	12.5	12.5	7.2	3.7	3.7	8.7	13.7	13.7	3	16.3	9.5	9.5	17.4	25.3	25.3	
4/6	128	5.2	1098	5.9	2	1.6	0.0	0.0	1.3	2.6	2.6	1.8	0.0	0.0	1.4	2.9	2.9	1	2.5	0.0	0.0	2.0	4.0	4.0	
>=7	135	5.4	1814	9.7	7	5.2	5.0	5.0	5.4	5.7	5.7	3.9	3.7	3.7	4.0	4.4	4.4	6	6.9	5.7	5.7	6.5	7.2	7.2	

<sup>a</sup> pats=patients patdays=patient days NP=Nosocomial Pneumonia; IAP=Intubation Associated NP

<sup>b</sup> #=#crude number; pats/patdays %=percentage of total pats/patdays; NP %=# NP /100 patients; NP incid = # NP / 1000 intubation days (before 1st NP); IUR=Intubation Utilization Rate; intubation days / 1000 patientdays



Table 34: Bloodstream Infection and Antibiotic Use

	pats <sup>a</sup>				patdays <sup>a</sup>				NB <sup>a</sup>										CAB <sup>a</sup>											
	# <sup>b</sup>		% <sup>b</sup>		# <sup>b</sup>		% <sup>b</sup>		# <sup>b</sup>		% <sup>b</sup>		# <sup>b</sup>		% <sup>b</sup>		# <sup>b</sup>		% <sup>b</sup>		# <sup>b</sup>		% <sup>b</sup>							
	agg	agg	agg	agg	agg	agg	agg	agg	agg	agg	agg	agg	agg	agg	agg	agg	agg	agg	agg	agg	agg	agg	agg	agg						
<b>total Antibiotic Use days</b>	agg	agg	agg	agg	p10	p25	p50	p75	p90	agg	p10	p25	p50	p75	p90	agg	p10	p25	p50	p75	p90	agg	p10	p25	p50	p75	p90			
0	140	5.6	1447	7.7	5	3.6	0.0	0.0	3.8	7.6	7.6	4.9	0.0	9.9	9.9	4	3.9	0.0	0.0	7.0	14.0	14.0	0.0	0.0	0.0	0.0	0.0	0.0	0.0	
1	9	0.4	52	0.3	0	0.0	0.0	0.0	0.0	0.0	0.0	0.0	0.0	0.0	0.0	0	0.0	0.0	0.0	0.0	0.0	0.0	0.0	0.0	0.0	0.0	0.0	0.0	0.0	
2/3	29	1.2	168	0.9	1	3.4	0.0	0.0	3.3	6.7	6.7	5.4	10.9	10.9	0	0.0	0.0	0.0	0.0	0.0	0.0	0.0	0.0	0.0	0.0	0.0	0.0	0.0	0.0	
4/6	143	5.8	1002	5.4	4	2.8	2.7	2.8	2.9	2.9	4.0	3.9	4.0	4.1	4.1	4	6.8	6.6	6.6	6.8	6.9	6.9	6.9	6.6	6.8	6.9	6.9	6.9	6.9	
>=7	212	8.5	2778	14.9	11	5.2	3.3	3.3	5.6	7.9	7.9	4.4	6.5	6.5	11	4.9	2.8	2.8	2.8	5.7	8.6	8.6	8.6	2.8	5.7	8.6	8.6	8.6	8.6	
<b>SDD Antibiotic Use days</b>	agg	agg	agg	agg	p10	p25	p50	p75	p90	agg	p10	p25	p50	p75	p90	agg	p10	p25	p50	p75	p90	agg	p10	p25	p50	p75	p90			
0	533	21.5	5447	29.1	21	3.9	2.1	2.1	4.1	6.0	6.0	4.3	1.9	6.8	6.8	19	4.8	2.4	2.4	5.6	8.9	8.9	8.9	2.4	5.6	8.9	8.9	8.9	8.9	
1	0	0.0	0	0.0	0	0.0	0.0	0.0	0.0	0.0	0.0	0.0	0.0	0.0	0.0	0	0.0	0.0	0.0	0.0	0.0	0.0	0.0	0.0	0.0	0.0	0.0	0.0	0.0	
2/3	0	0.0	0	0.0	0	0.0	0.0	0.0	0.0	0.0	0.0	0.0	0.0	0.0	0.0	0	0.0	0.0	0.0	0.0	0.0	0.0	0.0	0.0	0.0	0.0	0.0	0.0	0.0	0.0
4/6	0	0.0	0	0.0	0	0.0	0.0	0.0	0.0	0.0	0.0	0.0	0.0	0.0	0.0	0	0.0	0.0	0.0	0.0	0.0	0.0	0.0	0.0	0.0	0.0	0.0	0.0	0.0	0.0
>=7	0	0.0	0	0.0	0	0.0	0.0	0.0	0.0	0.0	0.0	0.0	0.0	0.0	0.0	0	0.0	0.0	0.0	0.0	0.0	0.0	0.0	0.0	0.0	0.0	0.0	0.0	0.0	0.0
<b>Prophylactic Antibiotic Use days</b>	agg	agg	agg	agg	p10	p25	p50	p75	p90	agg	p10	p25	p50	p75	p90	agg	p10	p25	p50	p75	p90	agg	p10	p25	p50	p75	p90			
0	505	20.3	5218	27.9	19	3.8	2.2	2.2	3.9	5.7	5.7	4.1	1.9	6.4	6.4	17	4.5	2.4	2.4	5.4	8.4	8.4	8.4	2.4	5.4	8.4	8.4	8.4	8.4	8.4
1	11	0.4	82	0.4	1	9.1	0.0	0.0	6.3	12.5	12.5	7.1	0.0	14.3	14.3	1	15.6	0.0	0.0	9.6	19.2	19.2	19.2	0.0	9.6	19.2	19.2	19.2	19.2	19.2
2/3	8	0.3	78	0.4	1	12.5	0.0	0.0	8.3	16.7	16.7	9.3	0.0	18.5	18.5	1	14.9	0.0	0.0	11.6	23.3	23.3	23.3	0.0	11.6	23.3	23.3	23.3	23.3	23.3
4/6	7	0.3	47	0.3	0	0.0	0.0	0.0	0.0	0.0	0.0	0.0	0.0	0.0	0.0	0	0.0	0.0	0.0	0.0	0.0	0.0	0.0	0.0	0.0	0.0	0.0	0.0	0.0	0.0
>=7	2	0.1	22	0.1	0	0.0	0.0	0.0	0.0	0.0	0.0	0.0	0.0	0.0	0.0	0	0.0	0.0	0.0	0.0	0.0	0.0	0.0	0.0	0.0	0.0	0.0	0.0	0.0	0.0
<b>Empirical Antibiotic Use days</b>	agg	agg	agg	agg	p10	p25	p50	p75	p90	agg	p10	p25	p50	p75	p90	agg	p10	p25	p50	p75	p90	agg	p10	p25	p50	p75	p90			
0	203	8.2	1979	10.6	6	3.0	0.0	0.0	2.7	5.4	5.4	3.4	0.0	6.9	6.9	5	3.5	0.0	0.0	4.7	9.4	9.4	9.4	0.0	4.7	9.4	9.4	9.4	9.4	9.4
1	13	0.5	115	0.6	0	0.0	0.0	0.0	0.0	0.0	0.0	0.0	0.0	0.0	0.0	0	0.0	0.0	0.0	0.0	0.0	0.0	0.0	0.0	0.0	0.0	0.0	0.0	0.0	0.0
2/3	53	2.1	460	2.5	5	9.4	6.7	6.7	8.6	10.5	10.5	10.0	8.1	11.9	11.9	4	13.8	12.7	12.7	13.4	14.2	14.2	14.2	12.7	13.4	14.2	14.2	14.2	14.2	14.2
4/6	130	5.2	1124	6.0	4	3.1	2.6	2.6	3.2	3.8	3.8	3.1	3.1	3.6	3.6	4	5.4	4.9	4.9	5.4	5.9	5.9	5.9	4.9	5.4	5.9	5.9	5.9	5.9	5.9
>=7	134	5.4	1769	9.5	6	4.5	3.1	3.1	5.7	8.3	8.3	4.6	2.3	6.9	6.9	6	4.3	2.7	2.7	6.2	9.7	9.7	9.7	2.7	6.2	9.7	9.7	9.7	9.7	9.7

<sup>a</sup> pats=patients patdays=patient days NB=Nosocomial Bacteremia; CAB=Catheter Associated NB

<sup>b</sup> #=#crude number; pats/patdays %=percentage of total pats/patdays; NB %=# NB /100 patients; NB incid = # NB / 1000 patientdays; CAB incid = # NP / 1000 Catheter days (before 1st NB);



Table 35: Standardized Pneumonia and Bacteremia Rates

	Expected <sup>a</sup>	Observed/Expected <sup>a</sup>					
	agg	agg	p10	p25	p50	p75	p90
Nosocomial Bacteremia	23.00	1.00	0.53	0.53	0.89	1.59	1.59
Nosocomial Pneumonia	21.00	1.00	0.59	0.59	0.91	3.94	3.94

<sup>a</sup> Expected=number of infection as predicted by risk factors for Pneumonia and Bacteremia Observed/Expected=number of observed infections divided by expected number of infections



Table 36: Nosocomial Pneumonia and Bacteremia risk score distribution

	pats <sup>a</sup>			patdays <sup>a</sup>			NP, NB <sup>a</sup>						IAP, CAB <sup>a</sup>																		
	# <sup>b</sup>	% <sup>b</sup>	agg	# <sup>b</sup>	% <sup>b</sup>	agg	# <sup>b</sup>	% <sup>b</sup>	agg	p10	p25	p50	p75	p90	agg	p10	p25	p50	p75	p90	# <sup>b</sup>	agg	p10	p25	p50	p75	p90				
																												incd <sup>b</sup>	incd <sup>b</sup>	incd <sup>b</sup>	
<b>Nosocomial Pneumonia Risk Score</b>																															
≤ 9	113	4.6	1040	5.6	0	0.0	0.0	0.0	0.0	0.0	0.0	0.0	0.0	0.0	0.0	0.0	0.0	0.0	0.0	0.0	0.0	0	0	0.0	0.0	0.0	0.0	0.0	0.0		
10/19	246	9.9	2041	10.9	3	1.2	0.0	0.0	0.0	0.0	0.0	0.0	0.0	1.5	0.0	0.0	0.0	0.0	0.0	0.0	13.0	1	2.0	0.0	0.0	0.0	0.0	0.0	0.0	38.5	38.5
20/29	87	3.5	556	3.0	3	3.4	0.0	0.0	2.4	14.3	14.3	14.3	14.3	5.4	0.0	0.0	3.5	26.7	26.7	26.7	2	16.9	0.0	0.0	0.0	14.3	55.6	55.6	55.6	55.6	
30/39	52	2.1	767	4.1	5	9.6	5.3	5.3	10.0	33.3	33.3	33.3	33.3	6.5	3.6	6.5	40.0	40.0	40.0	40.0	3	9.1	0.0	0.0	0.0	9.2	45.5	45.5	45.5	45.5	
40/49	54	2.2	633	3.4	3	5.6	0.0	0.0	5.2	10.3	10.3	10.3	10.3	4.7	0.0	0.0	3.9	7.8	7.8	7.8	3	7.1	0.0	0.0	0.0	5.8	11.6	11.6	11.6	11.6	
50/59	32	1.3	411	2.2	4	12.5	5.9	5.9	12.9	20.0	20.0	20.0	20.0	9.7	5.3	9.4	13.5	13.5	13.5	13.5	4	12.2	7.6	7.6	11.4	15.2	15.2	15.2	15.2	15.2	
> 60	23	0.9	411	2.2	3	13.0	6.3	6.3	17.4	28.6	28.6	28.6	28.6	7.3	3.1	13.3	23.5	23.5	23.5	23.5	2	6.3	3.9	3.9	10.0	16.1	16.1	16.1	16.1	16.1	
<b>Nosocomial Bacteremia Risk Score</b>																															
≤ 9	212	8.5	1504	8.0	7	3.3	2.2	2.2	2.3	5.2	5.2	5.2	5.2	4.7	2.4	2.4	4.9	8.4	8.4	8.4	6	9.9	4.3	4.3	27.0	28.6	28.6	28.6	28.6	28.6	
10/19	164	6.6	1303	7.0	3	1.8	0.0	0.0	0.0	4.8	4.8	4.8	4.8	2.3	0.0	0.0	0.0	6.5	6.5	6.5	3	2.8	0.0	0.0	0.0	0.0	8.0	8.0	8.0	8.0	8.0
20/29	79	3.2	965	5.2	3	3.8	0.0	0.0	0.0	7.1	7.1	7.1	7.1	3.1	0.0	0.0	0.0	5.7	5.7	5.7	3	4.5	0.0	0.0	0.0	0.0	8.9	8.9	8.9	8.9	8.9
30/39	61	2.5	750	4.0	2	3.3	0.0	0.0	2.9	4.3	4.3	4.3	4.3	2.7	0.0	0.0	2.1	4.0	4.0	4.0	2	2.9	0.0	0.0	0.0	2.4	3.9	3.9	3.9	3.9	3.9
40/49	79	3.2	1146	6.1	6	7.6	0.0	0.0	4.9	10.8	10.8	10.8	10.8	5.2	0.0	0.0	2.8	9.1	9.1	9.1	5	5.0	0.0	0.0	0.0	3.1	8.6	8.6	8.6	8.6	
≥ 50	10	0.4	176	0.9	2	20.0	0.0	0.0	16.7	50.0	50.0	50.0	50.0	11.4	0.0	0.0	7.9	29.4	29.4	29.4	2	12.7	0.0	0.0	0.0	8.8	33.3	33.3	33.3	33.3	
> 60	0	0.0	0	0.0	0	.	.	.	.	.	.	.	.	.	.	.	.	.	.	.	0	.	.	.	.	.	.	.	.	.	

<sup>a</sup> pats=patients patdays=patient days NP=Nosocomial Pneumonia; NB=Nosocomial Bacteremia; IAP=Intubation Associated NP; CAB=Catheter Associated NB  
<sup>b</sup> #=#crude number; pats/patdays %=percentage of total pats/patdays; NP %=# NP/100 patients; NP incid = # NP/1000 patientdays; IAP incid = # NP/1000 intubation days (before 1st NP); NB %=# NB/100 patients; NB incid = # NB/1000 catheter days (before 1st NB);

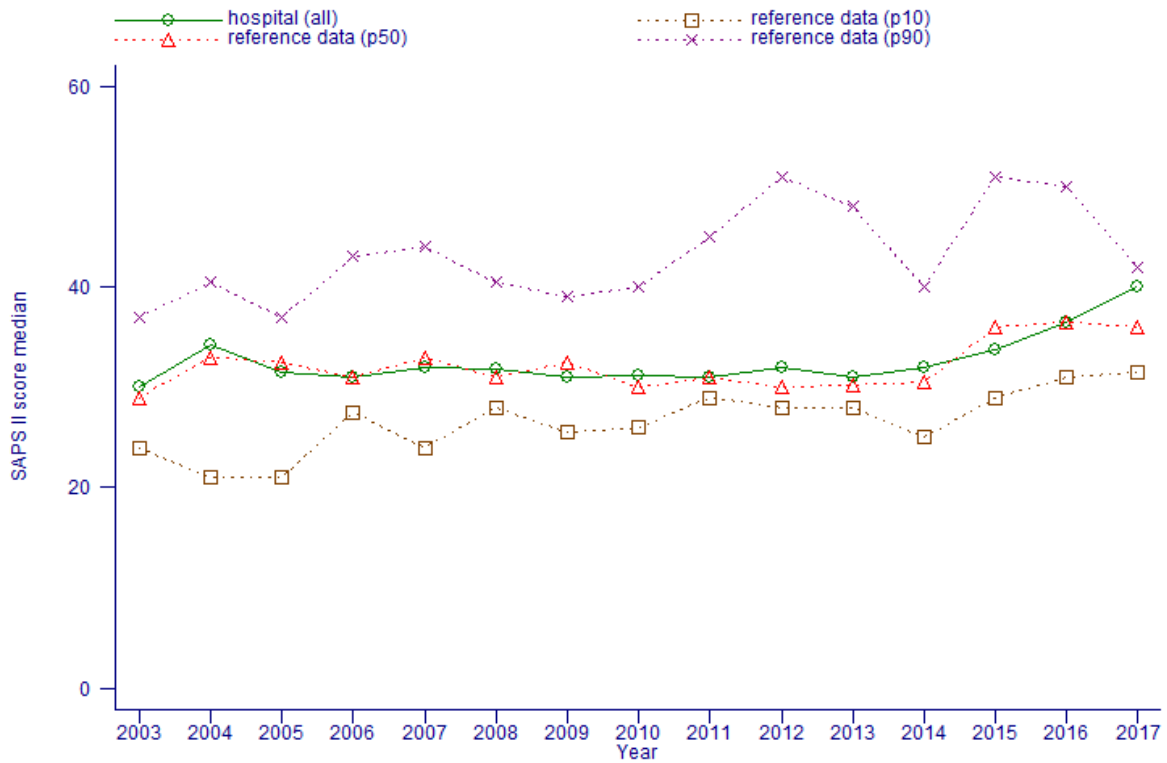


Figure 1: Evolution: SAPS II Score Median

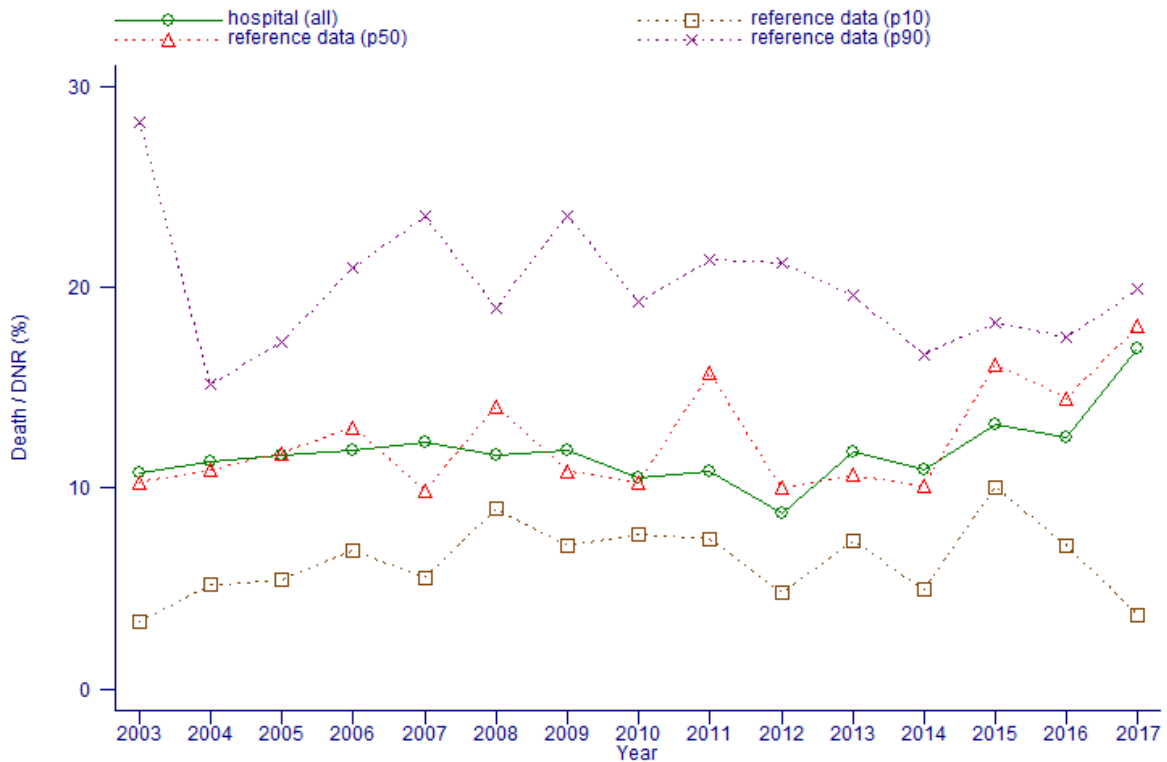


Figure 2: Evolution: Death / DNR (%)

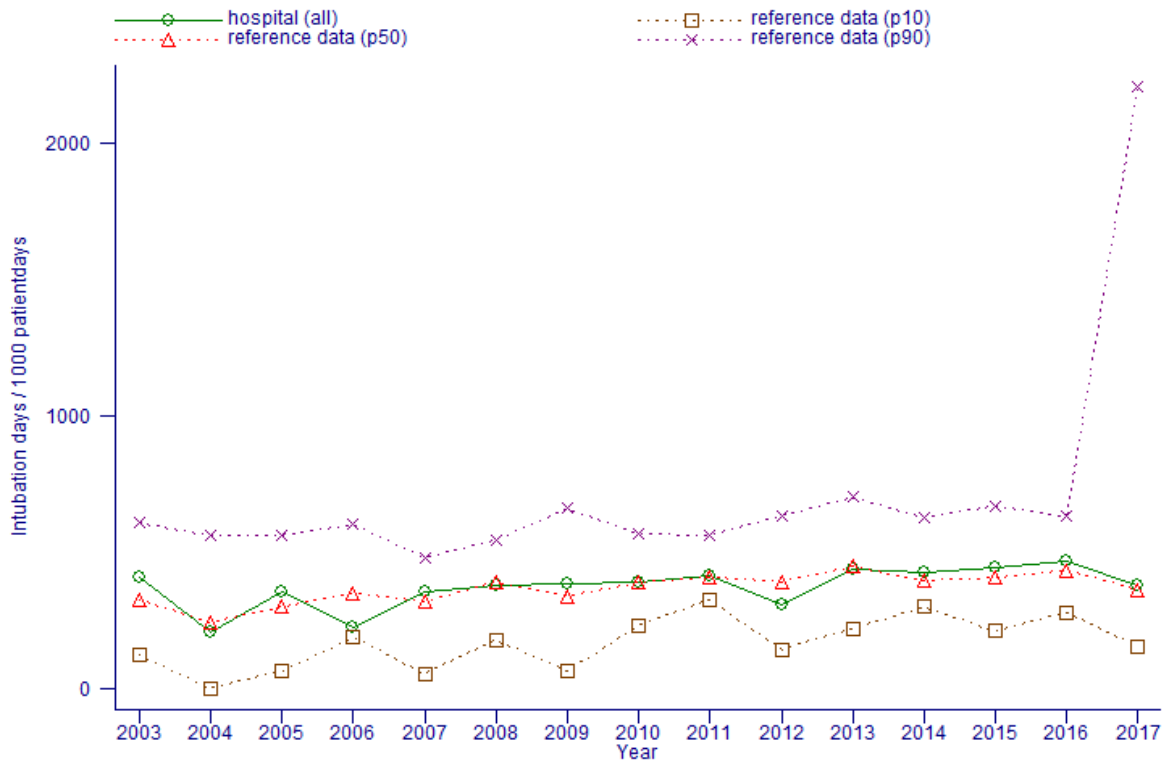


Figure 3: Evolution: Intubation days / 1000 patientdays

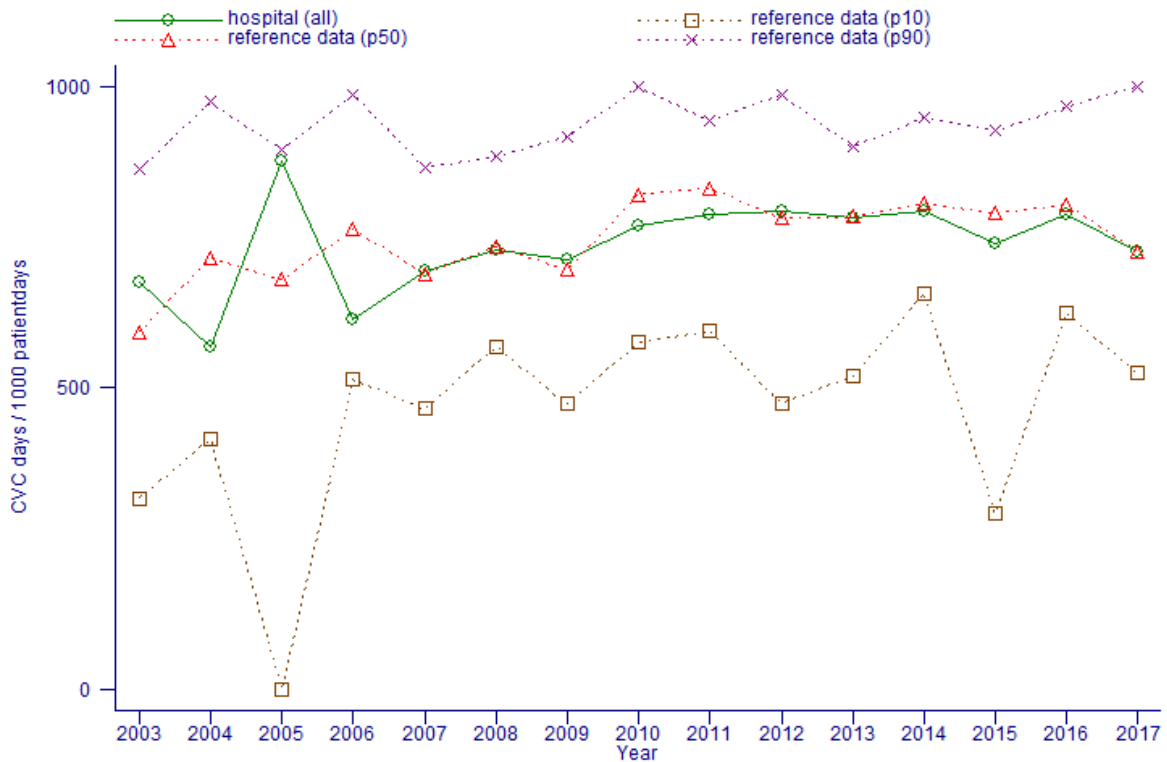


Figure 4: Evolution: CVC days / 1000 patientdays

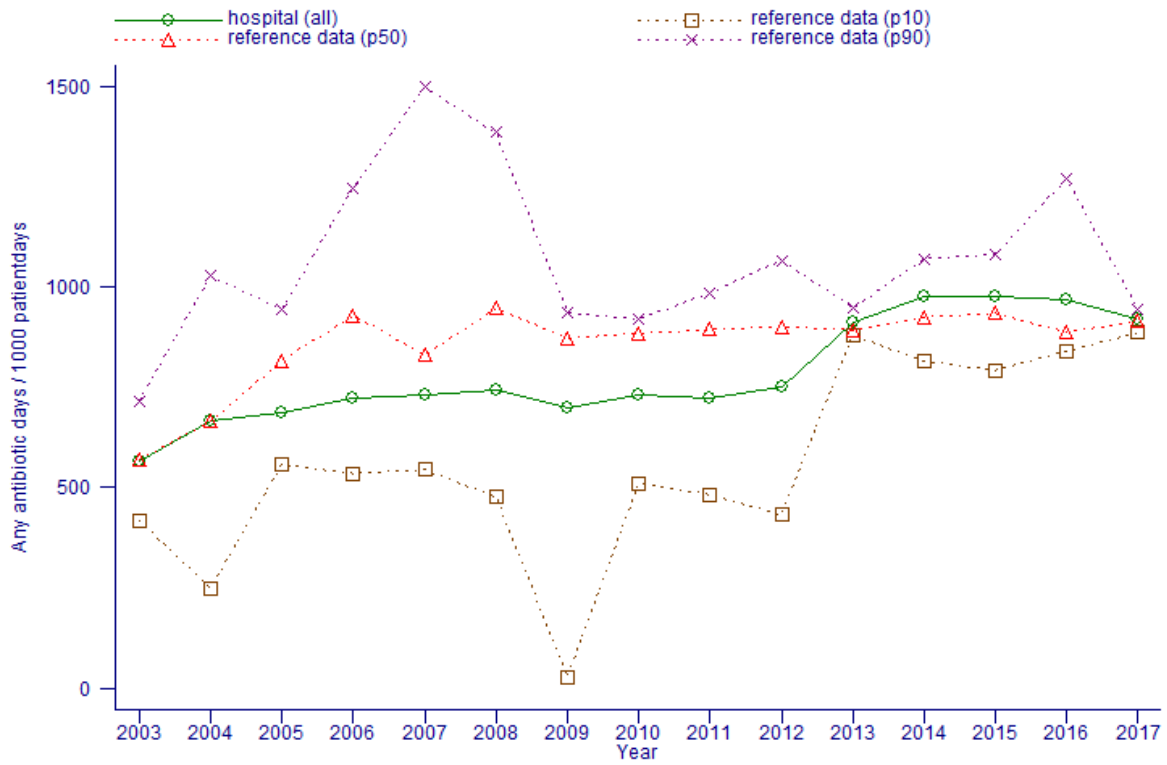


Figure 5: Evolution: Any AB utilization days / 1000 patientdays

Hospital (all) :  
1.00 observed NP/expected NP

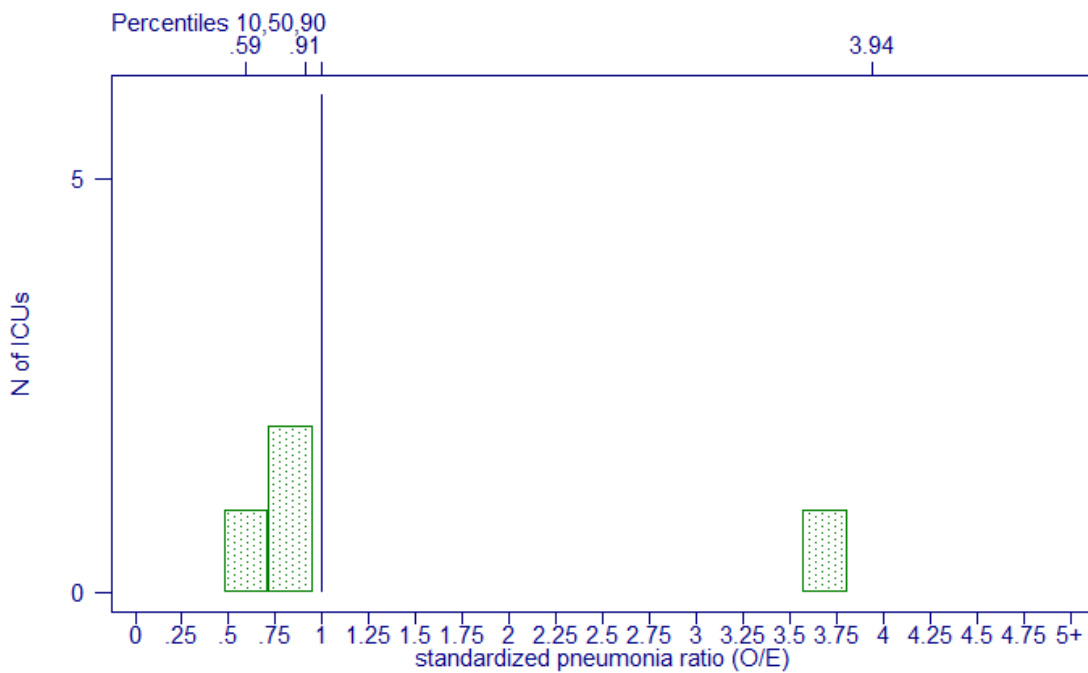


Figure 6: Benchmark: Standardized Pneumonia Ratio



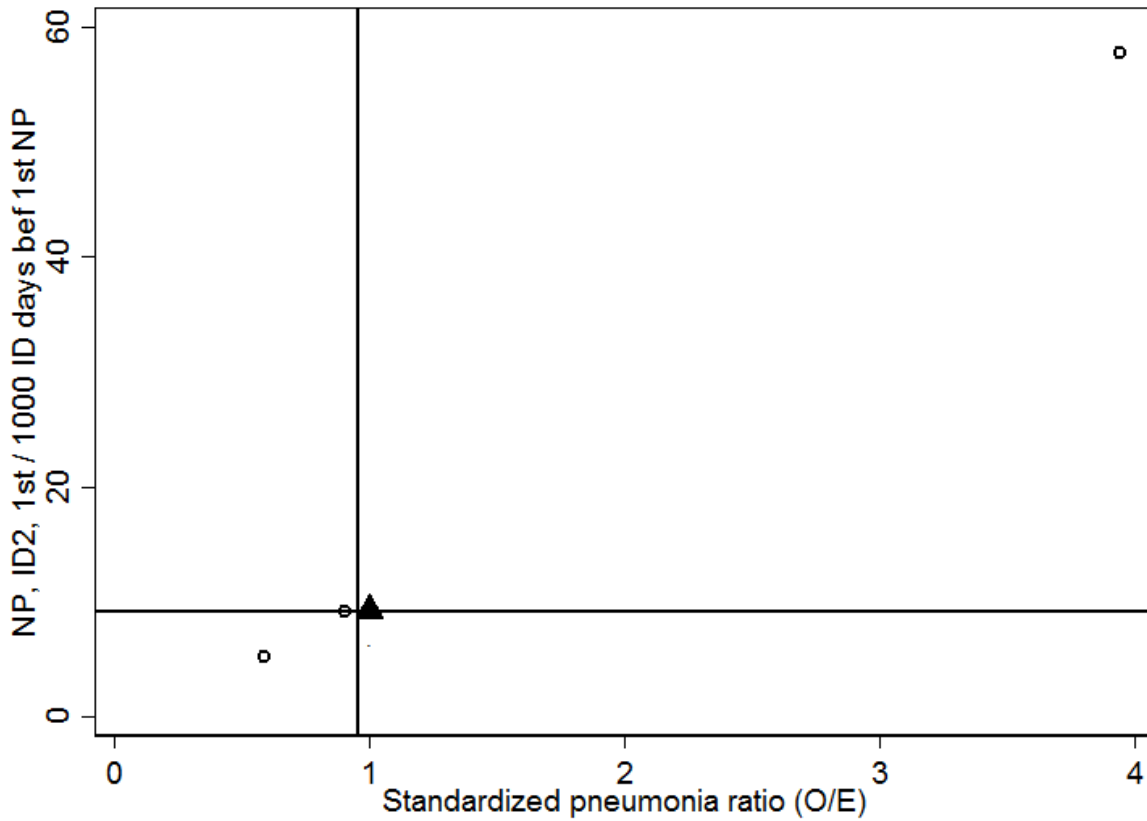


Figure 7: Benchmark: Ventilator Associated Pneumonia versus Standardized Pneumonia Ratio

Hospital (all) :  
1.00 observed NB/expected NB

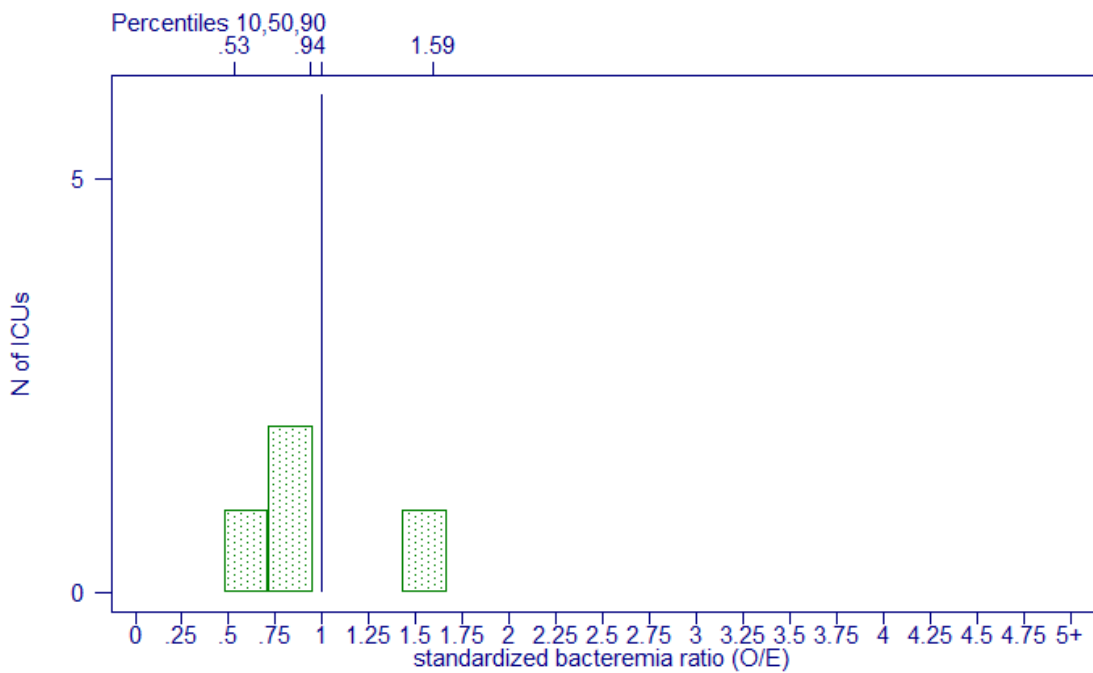


Figure 8: Benchmark: Standardized Bacteremia Ratio

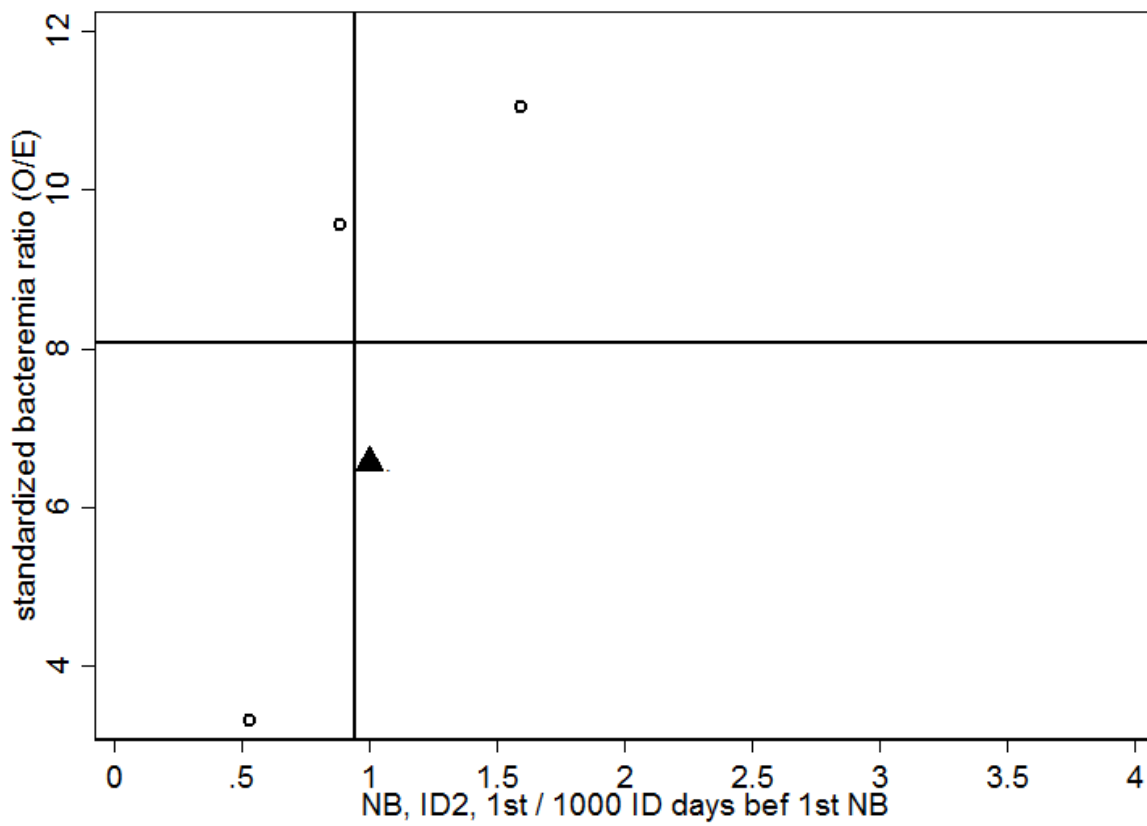


Figure 9: Benchmark: Catheter Associated Bacteremia versus Standardized Bacteremia Ratio