



WETENSCHAPPELIJK INSTITUUT  
VOLKSGEZONDHEID  
INSTITUT SCIENTIFIQUE  
DE SANTÉ PUBLIQUE

# Surveillance of ICU - Acquired Infections

## National Feedback Report

### Risk Factor Indicators

### Year 2018

Scientific Institute of Public Health  
Direction of Public Health and Surveillance  
National Surveillance of Hospital Infections (NSIH program)

14, Juliette Wytsmanstraat  
1050 Brussels - Belgium  
<http://www.wiv-isp.be>  
<http://www.nsih.be>

Het project wordt financieel ondersteund door  
*KB van 19 juni 2007 betreffende de vaststelling en de vereffening van het budget van financiële middelen van de ziekenhuizen*

Le projet est financièrement soutenu par  
*AR du 19 juin 2007 relatif à la fixation et à la liquidation du budget des moyens financiers des hôpitaux*

Further information on this report:  
Mr. Karl Mertens  
Tel +32 2 642 5795  
[karl.mertens@wiv-isp.be](mailto:karl.mertens@wiv-isp.be)



## List of Tables

1	Missing Admission variables . . . . .	2
2	Admission Characteristics (a) . . . . .	3
3	Admission Characteristics (b) . . . . .	4
4	Admission Characteristics (c) . . . . .	5
5	Admission Characteristics (d) . . . . .	6
6	Daily Invasive Device exposure indicators . . . . .	7
7	Missing SOFA Scores . . . . .	8
8	Daily SOFA score indicators . . . . .	9
9	Daily SOFA score indicators . . . . .	10
10	Antibiotic Use Population (aggregated) . . . . .	11
11	Antibiotic Use Distribution (aggregated) . . . . .	12
12	Antibiotic Use (exhaustive) (a) . . . . .	13
13	Antibiotic Use (exhaustive) (b) . . . . .	14
14	Antibiotic Use (exhaustive) (c) . . . . .	14
15	Pneumonia and Admission Exposure (a) . . . . .	15
16	Pneumonia and Admission Exposure (b) . . . . .	16
17	Pneumonia and Admission Exposure (c) . . . . .	17
18	Pneumonia and Admission Exposure (d) . . . . .	18
19	Bloodstream Infection and Admission Exposure (a) . . . . .	19
20	Bloodstream Infection and Admission Exposure (b) . . . . .	20
21	Bloodstream Infection and Admission Exposure (c) . . . . .	21
22	Bloodstream Infection and Admission Exposure (d) . . . . .	22
23	Pneumonia and Invasive Device Exposure (a) . . . . .	23
24	Pneumonia and Invasive Device Exposure (b) . . . . .	24
25	Pneumonia and Invasive Device Exposure (c) . . . . .	25
26	Bloodstream Infection and Invasive Device Exposure (a) . . . . .	26
27	Bloodstream Infection and Invasive Device Exposure (b) . . . . .	27
28	Bloodstream Infection and Invasive Device Exposure (c) . . . . .	28
29	Pneumonia and SOFAScore (a) . . . . .	29
30	Pneumonia and SOFAScore (b) . . . . .	30
31	Bloodstream Infections and SOFAScore (a) . . . . .	31
32	Bloodstream Infections and SOFAScore (b) . . . . .	32
33	Pneumonia and Antibiotic Use . . . . .	33
34	Bloodstream Infection and Antibiotic Use . . . . .	34
35	Standardized Pneumonia and Bacteremia Rates . . . . .	35
36	Nosocomial Pneumonia and Bacteremia risk score distribution . . . . .	36

## List of Figures

1	Evolution: SAPS II Score Median . . . . .	37
2	Evolution: Death / DNR (%) . . . . .	37
3	Evolution: Intubation days / 1000 patientdays . . . . .	38
4	Evolution: CVC days / 1000 patientdays . . . . .	38
5	Evolution: Any AB utilization days / 1000 patientdays . . . . .	39
6	Benchmark: Standardized Pneumonia Ratio . . . . .	39
7	Benchmark: Ventilator Associated Pneumonia versus Standardized Pneumonia Ratio . . . . .	40
8	Benchmark: Standardized Bacteremia Ratio . . . . .	40
9	Benchmark: Catheter Associated Bacteremia versus Standardized Bacteremia Ratio . . . . .	41



Table 1: Missing Admission variables

variable	L1 <sup>a</sup>	L2 <sup>a</sup>	Ls <sup>a</sup>	Req <sup>a</sup>	# <sup>a</sup>	% <sup>a</sup>	p10	p25	p50	p75	p90
discharge date from the ICU	V		0	M	0	0.00	0.00	0.00	0.00	0.00	0.00
discharge status	V		0	R	4	0.14	0.00	0.00	0.00	0.38	0.72
discharge date from the hospital	V		0	O	960	33.24	0.00	0.00	9.73	100.00	100.00
discharge status from the hospital	V		0	O	950	32.89	0.00	0.00	9.73	100.00	100.00
SAPS II score	V		0	R	534	18.49	0.00	0.00	0.00	0.98	50.60
APACHE II score	V		0	O	534	18.49	0.00	0.00	0.00	0.98	50.60
PRISM score	V		0	O	541	18.73	0.00	0.00	0.00	2.65	52.36
patient origin	V		0	O	9	0.31	0.00	0.00	0.09	1.16	2.80
type of admission	V		0	R	15	0.52	0.00	0.00	0.09	1.16	5.74
trauma	V		0	R	12	0.42	0.00	0.00	0.09	1.16	4.27
impaired immunity	V		0	O	13	0.45	0.00	0.00	0.09	1.16	4.81
antimicrobial treatment within 48h around admission (<->48h)	V		0	R	12	0.42	0.00	0.00	0.00	1.16	4.32
acute coronary care	V	a	a	R	18	0.62	0.00	0.00	0.28	0.92	6.06
surgery in 30 days before admission	V	a	a	R	9	0.31	0.00	0.00	0.00	0.88	4.01
surgery in 30 days before admission	V	a	a	R	0	0.00	0.00	0.00	0.00	0.00	0.00
Glasgow coma score, estimated	V	a	a	O	841	29.12	0.00	0.00	1.84	100.00	100.00
Glasgow coma score, measured	V	a	a	O	351	12.15	0.00	0.00	0.09	100.00	100.00
total patient variables	V	a	a	O	4803	26.88	13.58	15.20	24.08	26.30	35.34

<sup>a</sup> L1 = level 1 variable (denominator-based surveillance) ; L2 = level 2 variable (patient-based surveillance) ; L2s = level 2 suboption (0=basic level 2 variables a=extra patient admission and day by day variables, b=central vascular catheter follow-up, c=antimicrobial treatment follow-up); Req: M=mandatory, R=Required, O=Optional #=number of missing variables; %=# / 100 eligible records



Table 2: Admission Characteristics (a)

	patients		LOS p50 <sup>a</sup>					SAPSII p50 <sup>a</sup>					Death/DNR % <sup>a</sup>					
	# <sup>b</sup>	%	agg		p25		p50		p75		agg		p25		p50		p75	
			p25	p50	p25	p50	p25	p50	p25	p50	agg	p25	p50	agg	p25	p50	p75	
<b>Age</b>																		
< 40	91		5	7	11	4	4	4	5	5	27	15	25	33	4	0	3	8
40-59	237		14	18	26	5	5	5	7	24	23	27	31	9	7	8	25	
60-69	250		24	21	22	26	5	5	6	33	30	33	40	13	11	13	19	
70-74	133		13	11	16	5	4	5	5	38	34	36	40	8	6	7	9	
75-79	120		11	11	12	14	6	5	6	38	37	37	44	14	9	13	20	
> 80	220		21	16	20	31	5	4	5	41	39	41	44	16	11	17	21	
unknown	0		0	0	0													
<b>Gender</b>																		
female	423		40	36	37	39	5	4	5	5	36	34	35	37	11	10	13	14
male	628		60	61	63	64	5	5	7	35	32	34	41	12	9	13	19	
unknown	0		0	0	0	0												
<b>SAPSII score</b>																		
< 10	5		0	0	0	1	3	3	3	6	9	8	9	9	0	0	0	0
10-19	62		6	5	13	14	5	4	4	5	17	16	17	18	3	0	4	8
20-29	104		10	12	19	24	5	4	4	6	25	25	25	26	0	0	0	0
30-39	133		13	17	25	28	6	5	5	34	34	34	35	9	5	6	8	
40-49	99		9	14	16	16	6	5	7	44	44	44	44	24	17	22	38	
50-59	56		5	6	9	12	9	6	7	10	53	53	53	30	22	34	38	
> 60	56		5	2	11	12	8	8	9	10	68	67	68	36	25	42	50	
unknown	536		51	0	1	2	4	4	4	14				9	0	0	4	

<sup>a</sup> LOS=median length of stay for patients admitted within this category; SAPSII=median SAPSII score for patients admitted within this category

<sup>b</sup> #=number of admissions within category; %=#/100 total admissions





Table 4: Admission Characteristics (c)

	# <sup>b</sup>			patients			LOS p50 <sup>a</sup>			SAPSII p50 <sup>a</sup>			Death/DNR % <sup>a</sup>			
	% <sup>b</sup>															
	agg	p25	p50	p75	agg	p25	p50	p75	agg	p25	p50	p75	agg	p25	p50	p75
<b>Trauma</b>																
no	905	86	88	91	5	5	5	5	36	34	34	37	12	9	14	21
yes	134	13	8	12	6	4	5	7	27	24	28	33	7	0	4	8
unknown	12	1	0	3	7	5	6	8	39	29	35	43	8	0	0	0
<b>Impaired Immunity</b>																
no	919	87	85	87	5	5	5	5	34	32	33	38	10	8	11	16
yes	119	11	8	10	5	5	6	8	41	36	37	45	26	33	35	39
unknown	13	1	0	1	11	9	11	15	41	34	41	54	23	0	0	25
<b>Antibiotic Treatment</b>																
no	636	61	54	57	4	4	4	5	34	29	33	38	8	6	11	11
yes	403	38	29	42	6	5	6	7	38	37	38	38	17	16	18	22
unknown	12	1	0	1	8	4	8	12	45	27	44	46	25	0	14	39

<sup>a</sup> LOS=median length of stay for patients admitted within this category; SAPSII=median SAPSII score for patients admitted within this category

<sup>b</sup> #=# of admissions within category; %=#/100 total admissions



Table 5: Admission Characteristics (d)

	patients										SAPSII p50 <sup>a</sup>										Death/DNR % <sup>a</sup>				
	# <sup>b</sup>					% <sup>b</sup>					LOS p50 <sup>a</sup>					SAPSII p50 <sup>a</sup>									
	agg	p25	p50	p75		agg	p25	p50	p75		agg	p25	p50	p75		agg	p25	p50	p75		agg	p25	p50	p75	
<b>Acute Coronary Care</b>																									
no	957	91	92	94	5	4	5	5	5	34	33	33	37	12	12	9	12	20							
yes	76	7	7	9	6	4	5	8	8	54	22	41	60	7	0	4	11								
unknown	18	2	1	2	10	6	10	13	13	44	32	45	47	22	0	0	30								
<b>Prior Surgery site</b>																									
no	676	64	64	65	5	5	5	7	7	39	37	39	41	16	11	21	21								
coronary	21	0	0	0	4	4	4	4	4	27	27	27	27	5	5	5	5								
other cardiac	9	1	0	1	6	4	6	7	7	31	28	31	33	11	0	6	13								
other thoracic	22	2	2	2	6	6	6	7	7	26	16	26	26	0	0	0	0								
other vascular	37	4	3	4	5	4	5	10	10	26	23	26	39	3	0	2									
abdominal	73	7	0	3	4	6	6	11	13	32	26	32	39	7	0	8									
neurosurgery	49	5	4	5	6	4	4	7	7	28	26	34	48	8	0	14									
other	171	16	7	15	21	4	4	5	5	31	29	31	32	2	0	1	3								
unknown	0	0	0	0																					

<sup>a</sup> LOS=median length of stay for patients admitted within this category; SAPSII=median SAPSII score for patients admitted within this category

<sup>b</sup> #=# of admissions within category; %=#/100 total admissions



Table 6: Daily Invasive Device exposure indicators

invasive device	# <sup>a</sup>	rate <sup>a</sup>					
		agg <sup>a</sup>	p10	p25	p50	p75	p90
Intubation days	5948	339.0	184.3	280.6	321.8	349.2	554.5
patients with Intubation days	413	16.5	30.1	30.2	35.8	48.4	55.9
central vascular catheter days	13651	734.0	41.8	602.7	730.0	885.2	1000.0
patients with central vascular catheter days	656	25.2	46.0	55.8	58.7	73.3	82.4
urinary catheter days	7375	856.4	673.4	710.4	850.6	915.1	971.5
patients with urinary catheter days	887	84.4	68.1	68.6	84.8	92.2	94.5
naso-oro intestinal tube days	3682	427.5	74.8	219.2	442.9	487.0	558.4
patients with naso-oro intestinal tube days	478	45.5	27.4	34.9	43.5	53.9	59.9
naso-oro intestinal tube feeding days	2414	280.3	82.2	201.8	251.2	339.8	369.4
patients with naso-oro intestinal tube feeding days	222	21.1	4.7	16.7	19.8	22.1	35.4
parenteral feeding days	935	108.6	30.9	55.4	86.1	186.0	216.9
patients with parenteral feeding days	110	10.5	3.5	7.1	9.3	13.7	21.2
invasive mechanical ventilation days	2236	259.6	0.0	258.3	279.4	305.2	324.7
patients with invasive mechanical ventilation days	350	33.3	0.0	28.3	30.2	35.6	47.0
non-invasive mechanical ventilation days	1089	126.5	0.0	95.9	123.0	137.8	162.6
patients with non-invasive mechanical ventilation days	243	23.1	0.0	16.3	18.4	28.1	34.5
tracheotomy intubation days	602	69.9	0.0	39.1	42.0	46.3	113.0
patients with tracheotomy intubation days	31	2.9	0.0	2.3	2.7	3.2	4.1
re-intubation days	72	8.4	0.0	0.0	3.5	3.9	15.7
patients with re-intubation days	49	4.7	0.0	0.0	2.3	3.7	7.3

<sup>a</sup> #=number of days or patients with device exposure; rate=#/1000 patientdays (days); rate=#/100 admissions (patients)





Table 7: Missing SOFA Scores

variable	L1 <sup>a</sup>	L2 <sup>a</sup>	Ls <sup>a</sup>	Req <sup>a</sup>	# <sup>a</sup>	% <sup>a</sup>	p10	p25	p50	p75	p90
sofa score, cns	V	a	R	8186	0.00	0.00	0.00	0.00	0.00	100.00	100.00
sofa score, respiration	V	a	R	8186	0.00	0.00	0.00	0.00	0.00	100.00	100.00
sofa score, coagulation	V	a	R	8186	0.00	0.00	0.00	0.00	0.00	100.00	100.00
sofa score, cardio	V	a	R	8186	0.00	0.00	0.00	0.00	0.00	100.00	100.00
sofa score, kidney	V	a	R	8186	0.00	0.00	0.00	0.00	0.00	100.00	100.00
sofa score, liver	V	a	R	8186	0.00	0.00	0.00	0.00	0.00	100.00	100.00
total sofa variables	V	a	O	49116	90.11	0.00	100.00	100.00	100.00	100.00	100.00

<sup>a</sup> |1= level 1 variable (denominator-based surveillance) ; |2= level 2 variable (patient-based surveillance) ; L2s= level 2 suboption (0=basic level 2 variables a=extra patient admission and day by day variables, b=central vascular catheter follow-up, c=antimicrobial treatment follow-up); Req: M=mandatory, R=Required, O=Optional #=number of missing variables; %=# / 100 eligible records



Table 8: Daily SOFA score indicators

	# <sup>a</sup>	agg <sup>b</sup>	p10 <sup>b</sup>	p25 <sup>b</sup>	p50 <sup>b</sup>	p75 <sup>b</sup>	p90 <sup>b</sup>
<b>CNS score</b>							
0	271	63.6	63.6	63.6	63.6	63.6	63.6
1	97	22.8	22.8	22.8	22.8	22.8	22.8
2	18	4.2	4.2	4.2	4.2	4.2	4.2
3	16	3.8	3.8	3.8	3.8	3.8	3.8
4	24	5.6	5.6	5.6	5.6	5.6	5.6
any	426	4.9	50.6	50.6	50.6	50.6	50.6
scores		0.7	0.7	0.7	0.7	0.7	0.7
<b>Respiratory score</b>							
0	39	9.2	9.2	9.2	9.2	9.2	9.2
1	115	27.0	27.0	27.0	27.0	27.0	27.0
2	176	41.3	41.3	41.3	41.3	41.3	41.3
3	87	20.4	20.4	20.4	20.4	20.4	20.4
4	9	2.1	2.1	2.1	2.1	2.1	2.1
any	426	4.9	50.6	50.6	50.6	50.6	50.6
scores		1.7	1.7	1.7	1.7	1.7	1.7
<b>Coagulation score</b>							
0	312	73.2	73.2	73.2	73.2	73.2	73.2
1	32	7.5	7.5	7.5	7.5	7.5	7.5
2	32	7.5	7.5	7.5	7.5	7.5	7.5
3	37	8.7	8.7	8.7	8.7	8.7	8.7
4	13	3.1	3.1	3.1	3.1	3.1	3.1
any	426	4.9	50.6	50.6	50.6	50.6	50.6
scores		0.5	0.5	0.5	0.5	0.5	0.5
<b>Cardiovascular score</b>							
0	252	59.2	59.2	59.2	59.2	59.2	59.2
1	78	18.3	18.3	18.3	18.3	18.3	18.3
2	1	0.2	0.2	0.2	0.2	0.2	0.2
3	82	19.2	19.2	19.2	19.2	19.2	19.2
4	13	3.1	3.1	3.1	3.1	3.1	3.1
any	426	4.9	50.6	50.6	50.6	50.6	50.6
scores		0.7	0.8	0.8	0.8	0.8	0.8

<sup>a</sup> #=number of patientdays; 0/4/any=# of days with SOFA score=0/4/any

<sup>b</sup> 0/4=% of days with SOFA score=0/4 among days with any SOFA score; any=% of days with any SOFA score among total patientdays; scores=median score for SOFA component; agg= value obtained when pooling all participating units; p=percentiles for the distribution of participating units;



Table 9: Daily SOFA score indicators

	# <sup>a</sup>	agg <sup>b</sup>	p10 <sup>b</sup>	p25 <sup>b</sup>	p50 <sup>b</sup>	p75 <sup>b</sup>	p90 <sup>b</sup>
<b>Renal score</b>							
0	236	55.4	55.4	55.4	55.4	55.4	55.4
1	83	19.5	19.5	19.5	19.5	19.5	19.5
2	57	13.4	13.4	13.4	13.4	13.4	13.4
3	16	3.8	3.8	3.8	3.8	3.8	3.8
4	34	8.0	8.0	8.0	8.0	8.0	8.0
any	426	4.9	50.6	50.6	50.6	50.6	50.6
scores		0.8	0.8	0.8	0.8	0.8	0.8
<b>Liver score</b>							
0	347	81.5	81.5	81.5	81.5	81.5	81.5
1	33	7.7	7.7	7.7	7.7	7.7	7.7
2	22	5.2	5.2	5.2	5.2	5.2	5.2
3	9	2.1	2.1	2.1	2.1	2.1	2.1
4	15	3.5	3.5	3.5	3.5	3.5	3.5
any	426	4.9	50.6	50.6	50.6	50.6	50.6
scores		0.3	0.3	0.3	0.3	0.3	0.3
<b>Total score</b>							
0/1	42	9.9	9.9	9.9	9.9	9.9	9.9
2	56	13.1	13.1	13.1	13.1	13.1	13.1
3/4	112	26.3	26.3	26.3	26.3	26.3	26.3
5/6	94	22.1	22.1	22.1	22.1	22.1	22.1
7/max	122	28.6	28.6	28.6	28.6	28.6	28.6
any	426	4.9	50.6	50.6	50.6	50.6	50.6
scores		4.7	4.8	4.8	4.8	4.8	4.8

<sup>a</sup> #=number of patientdays; 0/4/any=# of days with SOFA score=0/4/any

<sup>b</sup> 0/4=% of days with SOFA score=0/4 among days with any SOFA score; any=% of days with any SOFA score among total patientdays; scores=median score for SOFA component; agg= value obtained when pooling all participating units; p=percentiles for the distribution of participating units;



Table 10: Antibiotic Use Population (aggregated)

	Patients, # <sup>a</sup>					Patientdays, # <sup>a</sup>						
	agg	p10	p25	p50	p75	p90	agg	p10	p25	p50	p75	p90
patients with AB use	570	86	86	185	299	299	5743	701	701	2105	2937	2937
units with AB use	863	113	113	217	533	533	7082	842	842	2285	3955	3955

<sup>a</sup> Patients, # = number of patients; Patientdays, # = number of patientdays; agg = aggregated over all participating units; p10-p90 = percentile of distribution of participating units



Table 11: Antibiotic Use Distribution (aggregated)

	# <sup>a</sup>		% <sup>a</sup>							incd <sup>a</sup>				
	agg		agg	p10	p25	p50	p75	p90	agg	p10	p25	p50	p75	p90
Total AB days	5841								825	662	662	1020	1059	1059
AB days with SDD use	0	0	0	0	0	0	0	0	0	0	0	0	0	0
AB days with Prophylactic use	300	5	0	0	7	12	12	12	42	5	5	46	126	126
AB days with Empirical use	3698	63	44	44	57	78	78	78	522	376	376	470	793	793
AB days with Microorganism known	454	8	0	0	12	13	13	13	64	0	0	87	128	128
AB days with Antibiogram known	1389	24	22	22	23	32	32	32	196	152	152	222	335	335

<sup>a</sup> #=number of Antibiotic days with particular use; %=# AB days/100 total AB days; incd=# AB days/1000 patientdays of units with AB use; agg=aggregated over all participating units; p10-p90=percentile of distribution of participating units



Table 12: Antibiotic Use (exhaustive) (a)

Antibiotic	pats #	patdays #	Antibiotic days, # <sup>a</sup>						
			T	S	P	E	M	A	
all			5841	0	300	3698	454	1389	
J01A	TETRACYCLINES	1	3	2	0	0	2	0	0
J01C	PENICILLINS	393	4411	2395	0	87	1776	131	401
J01CA	Penicillins extended spectrum	56	880	332	0	0	178	23	131
J01CA01	Ampicillin	4	77	20	0	0	0	0	20
J01CA04	Amoxicillin	13	252	57	0	0	10	14	33
J01CA12	Piperacillin	29	380	185	0	0	155	0	30
J01CA17	Temocillin	13	222	70	0	0	13	9	48
J01CF	SS-lactamase resist. penicillins	26	423	162	0	0	47	4	111
J01CF02	Cloxacillin	1	4	2	0	0	0	0	2
J01CF04	Oxacillin	16	313	112	0	0	41	1	70
J01CF05	Flucloxacillin	9	106	48	0	0	6	3	39
J01CG	SS-lactamase inhibitors	28	306	133	0	0	97	6	30
J01CG02	Tazobactam	28	306	133	0	0	97	6	30
J01CR	SS-lactam + SS-lactamase inhibitor	309	3372	1691	0	87	1435	49	120
J01CR02	Amoxicillin + clavulanic acid	241	2695	1198	0	83	1006	34	75
J01CR05	Piperacilline + Tazobactam	82	1042	493	0	4	429	15	45
J01D	OTH. SS-LACTAM AB, INCL. CEPHALOSP.	269	3321	1636	0	104	995	96	441
J01DA	Cephalosporins	232	2772	1110	0	104	643	87	276
J01DA04	Cefazolin	29	249	52	0	40	12	0	0
J01DA06	Cefuroxime	76	1009	352	0	29	185	34	104
J01DA10	Cefotaxime	5	64	22	0	0	17	5	0
J01DA11	Ceftazidime	56	799	269	0	3	154	31	81
J01DA13	Ceftriaxone	83	957	384	0	32	256	17	79
J01DA15	Cefazedone	1	14	8	0	0	0	0	8
J01DA24	Cefepime	3	61	23	0	0	19	0	4
J01DF	Monobactams	4	58	20	0	0	14	0	6
J01DF01	Aztreonam	4	58	20	0	0	14	0	6
J01DH	Carbapenems	67	1371	506	0	0	338	9	159
J01DH02	Meropenem	67	1371	506	0	0	338	9	159

<sup>a</sup> T=total use; S=SDD use; P=Profylactic use; E=Empirical use; M=Microorganism known; A=Antibogram known



Table 13: Antibiotic Use (exhaustive) (b)

Antibiotic		pats #	patdays #	Antibiotic days, # <sup>a</sup>					
				T	S	P	E	M	A
J01E	SULFONAMIDES AND COMBINATIONS	20	441	182	0	34	66	19	63
J01EA	Trimethoprim	15	360	145	0	33	60	4	48
J01EA01	Trimethoprim	15	360	145	0	33	60	4	48
J01EE	Sulfonamides + trimethoprim + deriv	5	81	37	0	1	6	15	15
J01EE01	Sulfamethoxazole+T.(cotrimoxaz.)	5	81	37	0	1	6	15	15
J01F	MACROLIDES AND LINCOSAMIDES	53	738	274	0	1	241	3	29
J01FA	Macrolides + Synergistins	40	604	198	0	0	191	3	4
J01FA01	Erythromycin	1	4	1	0	0	1	0	0
J01FA02	Spiramycin	1	6	6	0	0	6	0	0
J01FA09	Clarithromycin	38	594	191	0	0	184	3	4
J01FF	Lincosamides	15	209	76	0	1	50	0	25
J01FF01	Clindamycin	15	209	76	0	1	50	0	25
J01G	AMINOGLYCOSIDE ANTIBACTERIALS	58	918	135	0	3	108	8	16
J01GB	Aminoglycosides other than strep	58	918	135	0	3	108	8	16
J01GB03	Gentamicin	3	22	9	0	0	0	2	7
J01GB06	Amikacin	55	896	126	0	3	108	6	9
J01M	QUINOLONE ANTIBACTERIALS	70	1212	356	0	3	155	32	166
J01MA	Fluoroquinolones	70	1212	356	0	3	155	32	166
J01MA02	Ciprofloxacin	44	893	223	0	3	92	11	117
J01MA12	Levofloxacin	12	253	52	0	0	8	10	34
J01MA14	Moxifloxacin	19	222	81	0	0	55	11	15
J01R	COMBINATIONS OF DIFFERENT AB's	1	6	4	0	0	0	0	4
J01RA	Combinations of different ab's	1	6	4	0	0	0	0	4
J01RA01	Penicill + other antibacterials	1	6	4	0	0	0	0	4

<sup>a</sup> T=total use; S=SDD use; P=Profylactic use; E=Empirical use; M=Microorganism known; A=Antibiogram known

Table 14: Antibiotic Use (exhaustive) (c)

Antibiotic		pats #	patdays #	Antibiotic days, # <sup>a</sup>					
				T	S	P	E	M	A
J01X	OTHER ANTIBACTERIALS	61	1077	406	0	0	178	47	181
J01XA	Glycopeptide antibacterials	50	852	283	0	0	142	43	98
J01XA01	Vancomycin	50	852	283	0	0	142	43	98
J01XB	Polymyxins	3	104	23	0	0	3	0	20
J01XB01	Colistin	3	104	23	0	0	3	0	20
J01XD	Imidazole derivatives	1	8	7	0	0	7	0	0
J01XD01	Metronidazole	1	8	7	0	0	7	0	0
J01XX08	Linezolid	9	221	93	0	0	26	4	63
J02A	ANTIMYCOTICS FOR SYSTEMIC USE	16	299	142	0	7	31	73	31
J02AA	Antifungal antibiotics	2	57	27	0	0	0	27	0
J02AA01	Amphotericin B	2	57	21	0	0	0	21	0
J02AB	Imidazole antimycotics	1	10	3	0	3	0	0	0
J02AB02	Ketoconazole	1	10	3	0	3	0	0	0
J02AC	Triazole derivative antimycotics	8	146	41	0	4	18	3	16
J02AC01	Fluconazole	8	146	41	0	4	18	3	16
J02AX	Other systemic antimycotics	2	27	10	0	0	3	7	0
J02AX04	Caspofungin	2	27	10	0	0	3	7	0
J04A	TREATMENT OF TUBERCULOSIS	1	15	6	0	0	0	6	0
J04AB	Antimycobacterial antibiotics	1	15	6	0	0	0	6	0
J04AB02	Rifampicin	1	15	6	0	0	0	6	0

<sup>a</sup> T=total use; S=SDD use; P=Profylactic use; E=Empirical use; M=Microorganism known; A=Antibiogram known



Table 15: Pneumonia and Admission Exposure (a)

	NP <sup>a</sup>												IAP <sup>a</sup>											
	pats <sup>a</sup>						patdays <sup>a</sup>						# <sup>b</sup>											
	agg	% <sup>b</sup>	agg	% <sup>b</sup>	agg	% <sup>b</sup>	agg	% <sup>b</sup>	agg	% <sup>b</sup>	agg	% <sup>b</sup>	agg	p10	p25	p50	p75	p90						
<b>Age</b>																								
≤ 40	91	8.7	727	8.4	2	2.2	0.0	0.0	0.0	1.7	8.3	2.8	0.0	0.0	0.0	2.1	10.1	0	0.0	0.0	0.0	0.0		
40-59	237	22.5	1998	23.2	4	1.7	0.0	0.0	2.6	3.7	16.7	2.0	0.0	0.0	2.4	3.7	17.4	3	3.9	0.0	0.0	0.0	7.1	
60-69	250	23.8	2062	23.9	2	0.8	0.0	0.0	0.0	0.7	4.8	1.0	0.0	0.0	0.0	0.9	5.3	1	1.3	0.0	0.0	0.0	0.0	
70-74	133	12.7	1192	13.8	3	2.3	0.0	0.0	1.7	5.6	6.3	2.5	0.0	0.0	1.9	7.5	7.5	2	5.0	0.0	0.0	0.0	5.6	
75-79	120	11.4	949	11.0	1	0.8	0.0	0.0	0.0	0.0	9.1	1.1	0.0	0.0	0.0	0.0	6.8	1	3.1	0.0	0.0	0.0	9.8	
≥ 80	220	20.9	1684	19.6	0	0.0	0.0	0.0	0.0	0.0	0.0	0.0	0.0	0.0	0.0	0.0	0.0	0	0.0	0.0	0.0	0.0	0.0	
unknown	0	0.0	0	0.0	0	0.0	0.0	0.0	0.0	0.0	0.0	0.0	0.0	0.0	0.0	0.0	0.0	0	0.0	0.0	0.0	0.0	0.0	
<b>Gender</b>																								
female	423	40.2	3110	36.1	4	0.9	0.0	0.0	0.4	2.3	5.4	1.3	0.0	0.0	0.6	3.2	5.5	3	2.8	0.0	0.0	0.0	9.5	
male	628	59.8	5502	63.9	8	1.3	0.0	0.7	0.7	3.4	4.6	1.5	0.0	0.6	0.8	4.6	5.5	4	2.0	0.0	0.0	1.2	2.7	
unknown	0	0.0	0	0.0	0	0.0	0.0	0.0	0.0	0.0	0.0	0.0	0.0	0.0	0.0	0.0	0.0	0	0.0	0.0	0.0	0.0	18.7	
<b>SAPSII score</b>																								
≤ 10	5	0.5	19	0.2	0	0.0	0.0	0.0	0.0	0.0	0.0	0.0	0.0	0.0	0.0	0.0	0.0	0	0.0	0.0	0.0	0.0	0.0	
10-19	62	5.9	347	4.0	0	0.0	0.0	0.0	0.0	0.0	0.0	0.0	0.0	0.0	0.0	0.0	0.0	0	0.0	0.0	0.0	0.0	0.0	
20-29	104	9.9	722	8.4	2	1.9	0.0	0.0	0.0	4.2	8.3	2.8	0.0	0.0	0.0	6.2	12.4	1	6.8	0.0	0.0	0.0	9.6	
30-39	133	12.7	1087	12.6	2	1.5	0.0	0.0	0.0	3.8	4.2	1.8	0.0	0.0	0.0	4.9	6.0	1	3.6	0.0	0.0	0.0	18.2	
40-49	99	9.4	1004	11.7	2	2.0	0.0	0.0	3.1	6.7	7.1	2.0	0.0	0.0	2.5	7.5	10.0	2	5.1	0.0	0.0	3.8	18.1	
50-59	56	5.3	704	8.2	3	5.4	0.0	2.0	4.9	8.5	11.1	4.3	0.0	1.4	4.4	6.2	6.3	2	5.1	0.0	0.0	4.3	11.0	
≥ 60	56	5.3	745	8.7	0	0.0	0.0	0.0	0.0	0.0	0.0	0.0	0.0	0.0	0.0	0.0	0.0	0	0.0	0.0	0.0	0.0	0.0	
unknown	536	51.0	3984	46.3	3	0.6	0.0	0.0	0.0	0.3	0.6	0.8	0.0	0.0	0.0	0.4	0.8	1	0.7	0.0	0.0	0.0	0.4	

<sup>a</sup> pats=patients patdays=patient days NP=Nosocomial Pneumonia; IAP=Intubation Associated NP  
<sup>b</sup> #=#crude number; pats/patdays %=percentage of total pats/patdays; NP %=# NP /100 patients; NP incid = # NP / 1000 patientdays; IAP incid = # NP / 1000 intubation days  
(before 1st NP); IUR=Intubation Utilization Rate, intubation days / 1000 patientdays





Table 16: Pneumonia and Admission Exposure (b)

	pats <sup>a</sup>										NP <sup>a</sup>										IAP <sup>a</sup>														
	# <sup>b</sup>					% <sup>b</sup>					incd <sup>b</sup>					# <sup>b</sup>					incd <sup>b</sup>														
	agg	agg	agg	agg	agg	p10	p25	p50	p75	p90	agg	agg	agg	agg	agg	p10	p25	p50	p75	p90	agg	agg	agg	agg	agg	p10	p25	p50	p75	p90					
<b>APACHE score</b>																																			
< 10	10	1.0	83	1.0	2	20.0	20.0	20.0	20.0	20.0	24.1	24.1	24.1	24.1	24.1	24.1	24.1	24.1	24.1	24.1	20.4	20.4	20.4	20.4	20.4	20.4	20.4	20.4	20.4	20.4					
10-19	15	1.4	130	1.5	1	6.7	6.7	6.7	6.7	6.7	7.7	7.7	7.7	7.7	7.7	7.7	7.7	7.7	7.7	7.7	10.3	10.3	10.3	10.3	10.3	10.3	10.3	10.3	10.3	10.3					
20-29	4	0.4	51	0.6	0	0.0	0.0	0.0	0.0	0.0	0.0	0.0	0.0	0.0	0.0	0.0	0.0	0.0	0.0	0.0	0.0	0.0	0.0	0.0	0.0	0.0	0.0	0.0	0.0	0.0					
30-39	1	0.1	30	0.3	0	0.0	0.0	0.0	0.0	0.0	0.0	0.0	0.0	0.0	0.0	0.0	0.0	0.0	0.0	0.0	0.0	0.0	0.0	0.0	0.0	0.0	0.0	0.0	0.0	0.0					
40-49	0	0.0	0	0.0	0	0.0	0.0	0.0	0.0	0.0	0.0	0.0	0.0	0.0	0.0	0.0	0.0	0.0	0.0	0.0	0.0	0.0	0.0	0.0	0.0	0.0	0.0	0.0	0.0	0.0					
50-59	0	0.0	0	0.0	0	0.0	0.0	0.0	0.0	0.0	0.0	0.0	0.0	0.0	0.0	0.0	0.0	0.0	0.0	0.0	0.0	0.0	0.0	0.0	0.0	0.0	0.0	0.0	0.0	0.0					
> 60	0	0.0	0	0.0	0	0.0	0.0	0.0	0.0	0.0	0.0	0.0	0.0	0.0	0.0	0.0	0.0	0.0	0.0	0.0	0.0	0.0	0.0	0.0	0.0	0.0	0.0	0.0	0.0	0.0					
unknown	1021	97.1	8318	96.6	9	0.9	0.5	0.6	0.9	2.7	1.1	0.4	0.8	1.2	2.7	3.9	3.9	3.9	3.9	3.9	1.7	0.0	0.7	2.7	3.9	15.2									
<b>Patient Origin</b>																																			
other service	601	57.2	5119	59.4	8	1.3	0.0	0.0	1.0	6.6	1.6	0.0	0.0	1.2	6.2	6.2	6.2	6.2	6.2	6.2	1.9	0.0	0.0	1.0	5.3	10.5									
other ICU	11	1.0	111	1.3	0	0.0	0.0	0.0	0.0	0.0	0.0	0.0	0.0	0.0	0.0	0.0	0.0	0.0	0.0	0.0	0.0	0.0	0.0	0.0	0.0	0.0	0.0	0.0	0.0	0.0					
community	392	37.3	3073	35.7	4	1.0	0.0	1.5	2.5	2.9	1.3	0.0	1.3	2.9	5.1	5.1	5.1	5.1	5.1	5.1	3.3	0.0	0.0	6.4	8.9	32.3									
nursing home	38	3.6	216	2.5	0	0.0	0.0	0.0	0.0	0.0	0.0	0.0	0.0	0.0	0.0	0.0	0.0	0.0	0.0	0.0	0.0	0.0	0.0	0.0	0.0	0.0	0.0	0.0	0.0	0.0					
unknown	9	0.9	93	1.1	0	0.0	0.0	0.0	0.0	0.0	0.0	0.0	0.0	0.0	0.0	0.0	0.0	0.0	0.0	0.0	0.0	0.0	0.0	0.0	0.0	0.0	0.0	0.0	0.0	0.0					
<b>Type of Admission</b>																																			
medical	715	68.0	5716	66.4	6	0.8	0.0	0.5	0.8	3.6	1.0	0.0	0.7	0.7	6.0	6.0	6.0	6.0	6.0	6.0	2.0	0.0	0.0	1.2	4.3	23.3									
scheduled surgical	184	17.5	1279	14.9	3	1.6	0.0	0.0	0.0	9.7	2.3	0.0	0.0	0.0	8.9	8.9	8.9	8.9	8.9	8.9	5.1	0.0	0.0	0.0	9.3										
unscheduled surgical	137	13.0	1433	16.6	2	1.5	0.0	0.0	0.0	12.5	1.4	0.0	0.0	0.0	8.3	8.3	8.3	8.3	8.3	8.3	1.6	0.0	0.0	0.0	11.6										
unknown	15	1.4	184	2.1	1	6.7	0.0	0.0	0.0	11.1	5.4	0.0	0.0	0.0	8.2	8.2	8.2	8.2	8.2	8.2	0.0	0.0	0.0	0.0	0.0	0.0	0.0	0.0	0.0	0.0					

<sup>a</sup> pats=patients patdays=patient days NP=Nosocomial Pneumonia; IAP=Intubation Associated NP

<sup>b</sup> #=#crude number; pats/patdays %=percentage of total pats/patdays; NP %=# NP /100 patients; NP incid = # NP / 1000 patientdays; IAP incid = # NP / 1000 intubation days (before 1st NP); IUR=Intubation Utilization Rate, intubation days / 1000 patientdays



Table 17: Pneumonia and Admission Exposure (c)

	pats <sup>a</sup>		patdays <sup>a</sup>		NP <sup>a</sup>										IAP <sup>a</sup>									
	# <sup>b</sup>	% <sup>b</sup>	# <sup>b</sup>	% <sup>b</sup>	agg	p10	p25	p50	p75	p90	agg	p10	p25	p50	p75	p90	agg	p10	p25	p50	p75	p90		
<b>Trauma</b>																								
no	905	86.1	7220	83.8	11	1.2	0.5	0.5	0.9	2.6	5.7	1.5	0.5	0.7	1.2	4.2	5.9	7	2.8	0.0	1.1	3.9	6.7	15.7
yes	134	12.7	1263	14.7	1	0.7	0.0	0.0	0.0	0.0	1.1	0.8	0.0	0.0	0.0	0.0	1.1	0	0.0	0.0	0.0	0.0	0.0	0.0
unknown	12	1.1	129	1.5	0	0.0	0.0	0.0	0.0	0.0	0.0	0.0	0.0	0.0	0.0	0.0	0.0	0	0.0	0.0	0.0	0.0	0.0	0.0
<b>Impaired Immunity</b>																								
no	919	87.4	7358	85.4	11	1.2	0.5	0.6	1.1	2.6	4.6	1.5	0.5	0.9	1.6	4.3	5.4	6	2.4	0.0	0.8	5.3	6.8	16.7
yes	119	11.3	991	11.5	0	0.0	0.0	0.0	0.0	0.0	0.0	0.0	0.0	0.0	0.0	0.0	0.0	0	0.0	0.0	0.0	0.0	0.0	0.0
unknown	13	1.2	263	3.1	1	7.7	0.0	0.0	0.0	0.0	12.5	3.8	0.0	0.0	0.0	0.0	4.9	1	5.6	0.0	0.0	0.0	6.5	6.5
<b>Antibiotic Treatment</b>																								
no	636	60.5	4844	56.2	5	0.8	0.0	0.3	0.6	1.6	3.1	1.0	0.0	0.5	0.5	2.4	3.4	1	0.7	0.0	0.0	0.0	0.0	8.8
yes	403	38.3	3565	41.4	5	1.2	0.0	0.0	0.9	3.3	3.4	1.4	0.0	0.0	0.9	3.8	5.3	4	2.6	0.0	0.0	1.0	8.4	17.2
unknown	12	1.1	203	2.4	2	16.7	0.0	0.0	0.0	14.3	28.6	9.9	0.0	0.0	0.0	6.1	12.1	2	13.6	0.0	0.0	6.9	13.8	13.8

<sup>a</sup> pats=patients patdays=patient days NP=Nosocomial Pneumonia; IAP=Intubation Associated NP

<sup>b</sup> #=#crude number; pats/patdays %=percentage of total pats/patdays; NP %=# NP /100 patients; NP incid = # NP / 1000 patientdays; IAP incid = # NP / 1000 intubation days (before 1st NP); IUR=Intubation Utilization Rate; intubation days / 1000 patientdays



Table 18: Pneumonia and Admission Exposure (d)

	pats <sup>a</sup>			patdays <sup>a</sup>			NP <sup>a</sup>																		
	# <sup>b</sup>		% <sup>b</sup>	# <sup>b</sup>		% <sup>b</sup>	incd <sup>b</sup>					# <sup>b</sup>													
	agg	agg	agg	agg	agg	agg	p10	p25	p50	p75	p90	agg	p10	p25	p50	p75	p90								
<b>Acute Coronary Care</b>																									
no	957	91.1	7624	88.5	10	1.0	0.5	0.6	1.0	2.5	3.6	1.3	0.9	1.3	4.2	4.2	4.2	5	1.9	0.0	0.9	3.0	3.9	16.4	
yes	76	7.2	648	7.5	0	0.0	0.0	0.0	0.0	0.0	0.0	0.0	0.0	0.0	0.0	0.0	0.0	0	0.0	0.0	0.0	0.0	0.0	0.0	0.0
unknown	18	1.7	340	3.9	2	11.1	0.0	0.0	0.0	0.0	20.0	0.0	0.0	0.0	10.3	0.0	0.0	2	8.2	0.0	0.0	0.0	6.0	11.9	
<b>Prior Surgery site</b>																									
no	676	64.3	5423	63.0	6	0.9	0.0	0.6	1.1	1.6	3.6	1.4	0.8	1.4	1.7	5.9	1.7	5	2.5	0.0	1.3	3.1	4.5	22.7	
coronary	21	2.0	190	2.2	2	9.5	9.5	9.5	10.5	9.5	9.5	10.5	10.5	10.5	10.5	10.5	10.5	1	9.4	9.4	9.4	9.4	9.4	9.4	9.4
other cardiac	9	0.9	86	1.0	1	11.1	0.0	0.0	6.3	12.5	12.5	6.3	0.0	6.3	12.7	12.7	12.7	0	0.0	0.0	0.0	0.0	0.0	0.0	0.0
other thoracic	22	2.1	228	2.6	1	4.5	0.0	0.0	4.4	0.0	10.0	0.0	0.0	0.0	0.0	15.6	0.0	0	0.0	0.0	0.0	0.0	0.0	0.0	0.0
other vascular	37	3.5	231	2.7	0	0.0	0.0	0.0	0.0	0.0	0.0	0.0	0.0	0.0	0.0	0.0	0.0	0	0.0	0.0	0.0	0.0	0.0	0.0	0.0
abdominal	73	6.9	995	11.6	2	2.7	0.0	0.0	1.6	12.5	12.5	1.2	0.0	1.2	7.1	7.1	7.1	0	0.0	0.0	0.0	0.0	0.0	0.0	0.0
neurosurgery	49	4.7	342	4.0	1	2.0	0.0	0.0	0.0	0.0	50.0	0.0	0.0	0.0	0.0	66.7	0.0	1	9.7	0.0	0.0	0.0	100.0	200.0	
other	171	16.3	1179	13.7	0	0.0	0.0	0.0	0.0	0.0	0.0	0.0	0.0	0.0	0.0	0.0	0.0	0	0.0	0.0	0.0	0.0	0.0	0.0	
unknown	0	0.0	0	0.0	0	0.0	0.0	0.0	0.0	0.0	0.0	0.0	0.0	0.0	0.0	0.0	0.0	0	0.0	0.0	0.0	0.0	0.0	0.0	

<sup>a</sup> pats=patients patdays=patient days NP=Nosocomial P pneumonia; IAP=Intubation Associated NP

<sup>b</sup> #=#crude number; pats/patdays %=percentage of total pats/patdays; NP %=# NP /100 patients; NP incid = # NP / 1000 patientdays; IAP incid = # NP / 1000 intubation days (before 1st NP); IUR=Intubation Utilization Rate; intubation days / 1000 patientdays



Table 19: Bloodstream Infection and Admission Exposure (a)

	pats <sup>a</sup>										NB <sup>a</sup>										CAB <sup>a</sup>																			
	# <sup>b</sup>					% <sup>b</sup>					# <sup>b</sup>					% <sup>b</sup>					# <sup>b</sup>					% <sup>b</sup>														
	agg	agg	agg	agg	agg	p10	p25	p50	p75	p90	agg	agg	agg	agg	agg	p10	p25	p50	p75	p90	agg	agg	agg	agg	agg	p10	p25	p50	p75	p90	agg	agg	agg	agg	agg	p10	p25	p50	p75	p90
<b>Age</b>																																								
≤ 40	91	8.7	727	8.4	0	0.0	0.0	0.0	0.0	0.0	0.0	0.0	0.0	0.0	0.0	0.0	0.0	0.0	0.0	0.0	0	0.0	0.0	0.0	0.0	0.0	0.0	0.0	0.0	0.0	0	0.0	0.0	0.0	0.0	0.0	0.0	0.0	0.0	0.0
40-59	237	22.5	1998	23.2	4	1.7	0.0	0.0	2.6	6.7	7.4	2.0	0.0	0.0	2.4	0.0	0.0	0.0	7.4	8.6	3	2.2	0.0	0.0	3	2.2	0.0	0.0	3.1	4.2	27.0	0.0	0.0	0.0	0.0					
60-69	250	23.8	2062	23.9	5	2.0	0.0	0.0	0.0	9.5	13.6	2.4	0.0	0.0	0.0	0.0	0.0	0.0	10.6	13.7	4	2.6	0.0	0.0	4	2.6	0.0	0.0	5.8	21.6	0.0	0.0	0.0	0.0	0.0					
70-74	133	12.7	1192	13.8	1	0.8	0.0	0.0	0.0	0.0	1.7	0.8	0.0	0.0	0.0	0.0	0.0	0.0	0.0	1.9	1	1.1	0.0	0.0	1	1.1	0.0	0.0	0.0	2.5	0.0	0.0	0.0	0.0	0.0					
75-79	120	11.4	949	11.0	3	2.5	0.0	0.0	0.0	6.3	18.2	3.2	0.0	0.0	0.0	0.0	0.0	0.0	8.1	13.7	2	3.0	0.0	0.0	2	3.0	0.0	0.0	7.1	14.3	0.0	0.0	0.0	0.0	0.0					
≥ 80	220	20.9	1684	19.6	1	0.5	0.0	0.0	0.0	0.0	1.2	0.6	0.0	0.0	0.0	0.0	0.0	0.0	0.0	2.1	0	0.0	0.0	0.0	0	0.0	0.0	0.0	0.0	0.0	0.0	0.0	0.0	0.0	0.0					
unknown	0	0.0	0	0.0	0																0				0															
<b>Gender</b>																																								
female	423	40.2	3110	36.1	2	0.5	0.0	0.0	0.0	0.4	2.7	0.6	0.0	0.0	0.0	0.0	0.0	0.0	0.6	2.8	1	0.5	0.0	0.0	1	0.5	0.0	0.0	0.0	3.4	0.0	0.0	0.0	0.0	0.0					
male	628	59.8	5502	63.9	12	1.9	0.0	0.3	0.7	7.2	7.7	2.2	0.0	0.4	0.6	0.6	0.6	0.6	7.6	9.5	9	2.3	0.0	0.0	9	2.3	0.0	0.6	3.3	16.6	0.0	0.0	0.0	0.0	0.0					
unknown	0	0.0	0	0.0	0																0				0															
<b>SAPSII score</b>																																								
≤ 10	5	0.5	19	0.2	0	0.0	0.0	0.0	0.0	0.0	0.0	0.0	0.0	0.0	0.0	0.0	0.0	0.0	0.0	0.0	0	0.0	0.0	0.0	0	0.0	0.0	0.0	0.0	0.0	0.0	0.0	0.0	0.0	0.0					
10-19	62	5.9	347	4.0	1	1.6	0.0	0.0	0.0	8.3	16.7	2.9	0.0	0.0	0.0	0.0	0.0	0.0	18.5	37.0	1	5.6	0.0	0.0	1	5.6	0.0	0.0	71.4	142.9	0.0	0.0	0.0	0.0	0.0					
20-29	104	9.9	722	8.4	0	0.0	0.0	0.0	0.0	0.0	0.0	0.0	0.0	0.0	0.0	0.0	0.0	0.0	0.0	0.0	0	0.0	0.0	0.0	0	0.0	0.0	0.0	0.0	0.0	0.0	0.0	0.0	0.0	0.0					
30-39	133	12.7	1087	12.6	0	0.0	0.0	0.0	0.0	0.0	0.0	0.0	0.0	0.0	0.0	0.0	0.0	0.0	0.0	0.0	0	0.0	0.0	0.0	0	0.0	0.0	0.0	0.0	0.0	0.0	0.0	0.0	0.0	0.0					
40-49	99	9.4	1004	11.7	2	2.0	0.0	0.0	0.0	6.3	12.5	2.0	0.0	0.0	0.0	0.0	0.0	0.0	5.0	9.9	2	2.6	0.0	0.0	2	2.6	0.0	0.0	5.2	10.4	0.0	0.0	0.0	0.0	0.0					
50-59	56	5.3	704	8.2	5	8.9	0.0	2.0	7.9	17.0	22.2	7.1	0.0	1.4	7.5	12.3	12.6	12.6	12.3	12.6	3	5.1	0.0	0.0	3	5.1	0.0	1.6	11.4	19.6	0.0	0.0	0.0	0.0	0.0					
≥ 60	56	5.3	745	8.7	4	7.1	0.0	0.0	5.6	13.9	16.7	5.4	0.0	0.0	4.5	9.6	10.1	10.1	9.6	10.1	3	4.7	0.0	0.0	3	4.7	0.0	2.8	9.3	13.1	0.0	0.0	0.0	0.0	0.0					
unknown	536	51.0	3984	46.3	2	0.4	0.0	0.0	0.0	0.2	0.4	0.5	0.0	0.0	0.0	0.0	0.0	0.0	0.3	0.5	1	0.4	0.0	0.0	1	0.4	0.0	0.0	0.2	0.4	0.0	0.0	0.0	0.0	0.0					

<sup>a</sup> pats=patients; patdays=patient days NB=Nosocomial Bacteremia; CAB=Catheter Associated NB

<sup>b</sup> #=#crude number; pats/patdays %=percentage of total pats/patdays; NB %=# NB /100 patients; NB incid = # NB / 1000 patientdays; CAB incid = # NP / 1000 Catheter days (before 1st NB);



Table 20: Bloodstream Infection and Admission Exposure (b)

	pats <sup>a</sup>		patdays <sup>a</sup>		NB <sup>b</sup>										CAB <sup>a</sup>								
	# <sup>b</sup>	% <sup>b</sup>	# <sup>b</sup>	% <sup>b</sup>	agg	p10	p25	p50	p75	p90	agg	p10	p25	p50	p75	p90	agg	p10	p25	p50	p75	p90	
					agg	p10	p25	p50	p75	p90	agg	p10	p25	p50	p75	p90	agg	p10	p25	p50	p75	p90	
<b>APACHE score</b>																							
< 10	10	1.0	83	1.0	0	0.0	0.0	0.0	0.0	0.0	0.0	0.0	0.0	0.0	0.0	0.0	0.0	0.0	0.0	0.0	0.0	0.0	0.0
10-19	15	1.4	130	1.5	1	6.7	6.7	6.7	6.7	6.7	7.7	7.7	7.7	7.7	7.7	7.7	7.7	7.7	7.7	7.7	7.7	7.7	7.7
20-29	4	0.4	51	0.6	0	0.0	0.0	0.0	0.0	0.0	0.0	0.0	0.0	0.0	0.0	0.0	0.0	0.0	0.0	0.0	0.0	0.0	0.0
30-39	1	0.1	30	0.3	1	100.0	100.0	100.0	100.0	100.0	33.3	33.3	33.3	33.3	33.3	33.3	0	0.0	0.0	0.0	0.0	0.0	0.0
40-49	0	0.0	0	0.0	0	0.0	0.0	0.0	0.0	0.0	0	0	0	0	0	0	0	0	0	0	0	0	0
50-59	0	0.0	0	0.0	0	0.0	0.0	0.0	0.0	0.0	0	0	0	0	0	0	0	0	0	0	0	0	0
> 60	0	0.0	0	0.0	0	0.0	0.0	0.0	0.0	0.0	0	0	0	0	0	0	0	0	0	0	0	0	0
unknown	1021	97.1	8318	96.6	12	1.2	0.0	0.4	0.5	4.4	5.5	0.0	0.4	0.5	5.5	5.9	1.5	0.0	0.4	0.6	3.3	11.1	
<b>Patient Origin</b>																							
other service	601	57.2	5119	59.4	6	1.0	0.0	0.7	3.3	3.4	1.2	0.0	0.8	3.1	4.8	4	1.0	0.0	0.0	0.5	1.7	8.3	
other ICU	11	1.0	111	1.3	0	0.0	0.0	0.0	0.0	0.0	0.0	0.0	0.0	0.0	0.0	0.0	0	0.0	0.0	0.0	0.0	0.0	
community	392	37.3	3073	35.7	8	2.0	0.0	1.5	7.5	11.1	2.6	0.0	1.3	8.7	12.7	6	3.1	0.0	0.0	1.8	7.8	15.5	
nursing home	38	3.6	216	2.5	0	0.0	0.0	0.0	0.0	0.0	0.0	0.0	0.0	0.0	0.0	0	0.0	0.0	0.0	0.0	0.0	0.0	
unknown	9	0.9	93	1.1	0	0.0	0.0	0.0	0.0	0.0	0.0	0.0	0.0	0.0	0.0	0	0.0	0.0	0.0	0.0	0.0	0.0	
<b>Type of Admission</b>																							
medical	715	68.0	5716	66.4	6	0.8	0.0	0.8	2.9	3.7	1.0	0.0	0.7	3.9	4.6	5	1.3	0.0	0.0	0.9	2.6	7.4	
scheduled surgi-	184	17.5	1279	14.9	3	1.6	0.0	1.5	3.2	25.0	2.3	0.0	3.0	3.2	33.3	3	3.0	0.0	0.0	3.4	4.4	40.0	
cal																							
unscheduled	137	13.0	1433	16.6	3	2.2	0.0	0.0	1.1	25.0	2.1	0.0	0.0	1.1	16.5	1	0.9	0.0	0.0	0.0	0.0	9.4	
surgical																							
unknown	15	1.4	184	2.1	2	13.3	0.0	0.0	11.1	33.3	10.9	0.0	0.0	8.2	38.5	1	6.7	0.0	0.0	0.0	11.1	11.1	

<sup>a</sup> pats=patients patdays=patient days NB=Nosocomial Bacteremia; CAB=Catheter Associated NB

<sup>b</sup> #=#crude number; pats/patdays %=percentage of total pats/patdays; NB %=# NB /100 patients; NB incid = # NB / 1000 patientdays; CAB incid = # NP / 1000 Catheter days (before 1st NB);

Incidence of ICU-acquired Infections  
(Factor Indicators Year 2018)



Table 21: Bloodstream Infection and Admission Exposure (c)

	pats <sup>a</sup>						patdays <sup>a</sup>						NB <sup>a</sup>						CAB <sup>a</sup>					
	# <sup>b</sup>		% <sup>b</sup>		# <sup>b</sup>		% <sup>b</sup>		# <sup>b</sup>		% <sup>b</sup>		# <sup>b</sup>		% <sup>b</sup>		# <sup>b</sup>		% <sup>b</sup>		# <sup>b</sup>		% <sup>b</sup>	
	agg	agg	agg	agg	agg	agg	agg	agg	agg	agg	agg	agg	agg	agg	agg	agg	agg	agg	agg	agg	agg	agg	agg	agg
<b>Trauma</b>																								
no	905	86.1	7220	83.8	12	1.3	0.0	0.5	0.5	4.5	4.7	1.7	0.0	0.5	0.7	4.7	6.2	9	1.7	0.0	0.5	0.6	2.7	11.2
yes	134	12.7	1263	14.7	1	0.7	0.0	0.0	0.0	0.0	12.5	0.8	0.0	0.0	0.0	0.0	11.5	1	1.3	0.0	0.0	0.0	7.1	14.3
unknown	12	1.1	129	1.5	1	8.3	0.0	0.0	0.0	0.0	16.7	7.8	0.0	0.0	0.0	0.0	11.8	0	0.0	0.0	0.0	0.0	0.0	0.0
<b>Impaired Immunity</b>																								
no	919	87.4	7358	85.4	8	0.9	0.0	0.4	0.5	2.2	3.4	1.1	0.0	0.5	0.6	3.2	4.0	5	1.0	0.0	0.4	0.6	1.6	7.0
yes	119	11.3	991	11.5	3	2.5	0.0	0.0	0.0	0.0	16.7	3.0	0.0	0.0	0.0	0.0	14.6	3	3.8	0.0	0.0	0.0	0.0	18.5
unknown	13	1.2	263	3.1	3	23.1	0.0	0.0	0.0	0.0	37.5	11.4	0.0	0.0	0.0	0.0	14.7	2	8.8	0.0	0.0	0.0	10.1	10.1
<b>Antibiotic Treatment</b>																								
no	636	60.5	4844	56.2	7	1.1	0.0	0.3	0.6	1.6	6.2	1.4	0.0	0.5	0.5	2.4	6.8	5	1.6	0.0	0.7	1.0	4.0	5.0
yes	403	38.3	3565	41.4	5	1.2	0.0	0.0	0.0	0.4	8.0	1.4	0.0	0.0	0.0	0.5	10.3	4	1.5	0.0	0.0	0.0	0.0	16.5
unknown	12	1.1	203	2.4	2	16.7	0.0	0.0	0.0	14.3	28.6	9.9	0.0	0.0	0.0	6.1	12.1	1	5.8	0.0	0.0	0.0	6.2	6.2

<sup>a</sup> pats=patients patdays=patient days NB=Nosocomial Bacteremia; CAB=Catheter Associated NB

<sup>b</sup> #=#crude number; pats/patdays %=percentage of total pats/patdays; NB %=# NB /100 patients; NB incid = # NB / 1000 patientdays; CAB incid = # NP / 1000 Catheter days (before 1st NB);









Table 24: Pneumonia and Invasive Device Exposure (b)

		NPa										IAP <sup>a</sup>																
		pats <sup>a</sup>					patdays <sup>a</sup>					# <sup>b</sup>					% <sup>b</sup>											
		#	% <sup>b</sup>	agg	p10	p25	p50	p75	p90	agg	p10	p25	p50	p75	p90	agg	p10	p25	p50	p75	p90	agg	p10	p25	p50	p75	p90	
<b>Naso Oro Intestinal Tube without feeding</b>																												
0	602	57.3	4171	48.4	2	0.3	0.0	0.0	0.0	1.8	1.9	0.0	0.0	2.1	3.3	1	1.1	0.0	0.0	0.0	0.0	0.0	0.0	0.0	0.0	0.0	0.0	34.5
1	206	19.6	1145	13.3	3	1.5	0.0	0.0	0.0	3.7	7.1	2.6	0.0	4.3	14.6	3	7.0	0.0	0.0	0.0	0.0	0.0	0.0	0.0	0.0	0.0	6.5	27.8
2/3	138	13.1	1146	13.3	2	1.4	0.0	0.0	0.0	10.0	11.1	1.7	0.0	9.7	11.8	1	2.2	0.0	0.0	0.0	0.0	0.0	0.0	0.0	0.0	0.0	18.5	
4/6	52	4.9	734	8.5	3	5.8	0.0	0.0	0.0	0.0	9.7	4.1	0.0	0.0	7.2	1	2.5	0.0	0.0	0.0	0.0	0.0	0.0	0.0	0.0	2.2	4.4	
>=7	53	5.0	1416	16.4	2	3.8	0.0	0.0	2.5	8.8	12.5	1.4	0.0	2.8	3.8	1	1.1	0.0	0.0	0.0	0.0	0.0	0.0	0.0	0.0	2.2	4.4	
<b>Naso Oro Intestinal Tube with feeding</b>																												
0	861	81.9	5952	69.1	6	0.7	0.0	0.0	0.0	1.2	5.4	1.0	0.0	2.2	6.2	4	2.7	0.0	0.0	0.0	0.0	0.0	0.0	0.0	0.0	0.0	7.6	12.3
1	45	4.3	348	4.0	1	2.2	0.0	0.0	0.0	0.0	100.0	2.9	0.0	0.0	30.3	1	5.7	0.0	0.0	0.0	0.0	0.0	0.0	0.0	0.0	0.0	0.0	34.5
2/3	70	6.7	754	8.8	0	0.0	0.0	0.0	0.0	0.0	0.0	0.0	0.0	0.0	0.0	0	0.0	0.0	0.0	0.0	0.0	0.0	0.0	0.0	0.0	0.0	0.0	
4/6	36	3.4	514	6.0	3	8.3	0.0	0.0	0.0	6.5	13.0	5.8	0.0	4.6	9.3	1	3.0	0.0	0.0	0.0	0.0	0.0	0.0	0.0	0.0	2.5	5.0	
>=7	39	3.7	1044	12.1	2	5.1	0.0	0.0	3.8	13.8	20.0	1.9	0.0	5.6	8.5	1	1.4	0.0	0.0	0.0	0.0	0.0	0.0	0.0	0.0	5.7	11.5	
<b>Parenteral Nutrition</b>																												
0	952	90.6	7150	83.0	10	1.1	0.6	0.6	0.9	1.3	4.3	1.4	0.7	0.8	1.3	5	2.0	0.0	0.8	4.5	4.6	9.3						
1	21	2.0	163	1.9	0	0.0	0.0	0.0	0.0	0.0	0.0	0.0	0.0	0.0	0.0	0	0.0	0.0	0.0	0.0	0.0							
2/3	44	4.2	513	6.0	1	2.3	0.0	0.0	0.0	0.0	16.7	1.9	0.0	0.0	19.6	1	4.3	0.0	0.0	0.0	0.0							
4/6	19	1.8	344	4.0	0	0.0	0.0	0.0	0.0	0.0	0.0	0.0	0.0	0.0	0.0	0	0.0	0.0	0.0	0.0								
>=7	15	1.4	442	5.1	1	6.7	0.0	0.0	0.0	25.0	50.0	2.3	0.0	5.3	10.5	1	5.0	0.0	0.0	0.0								

<sup>a</sup> pats=patients patdays=patient days NP=Nosocomial Pneumonia; IAP=Intubation Associated NP  
<sup>b</sup> #=#crude number; pats/patdays %=percentage of total pats/patdays; NP %=# NP / 100 patients; NP incid = # NP / 1000 intubation days (before 1st NP); IUR=Intubation Utilization Rate, intubation days / 1000 patientdays



Table 25: Pneumonia and Invasive Device Exposure (c)

	pats <sup>a</sup>										NP <sup>a</sup>										IAP <sup>a</sup>												
	pats <sup>a</sup>					patdays <sup>a</sup>					NP <sup>a</sup>					IAP <sup>a</sup>					IAP <sup>a</sup>												
	# <sup>b</sup>	% <sup>b</sup>	agg	agg	% <sup>b</sup>	# <sup>b</sup>	% <sup>b</sup>	agg	agg	% <sup>b</sup>	# <sup>b</sup>	% <sup>b</sup>	agg	agg	% <sup>b</sup>	# <sup>b</sup>	% <sup>b</sup>	agg	agg	% <sup>b</sup>	# <sup>b</sup>	% <sup>b</sup>	agg	agg	% <sup>b</sup>	# <sup>b</sup>	% <sup>b</sup>	agg	agg	% <sup>b</sup>			
	agg	agg	p10	p25	p50	p75	p90	agg	p10	p25	p50	p75	p90	agg	p10	p25	p50	p75	p90	agg	p10	p25	p50	p75	p90	agg	p10	p25	p50	p75	p90		
<b>Invasive Mechanical Ventilation</b>																																	
0	724	68.9	5211	60.5	5	0.7	0.0	0.0	0.0	0.0	0.0	0.0	4.9	1.0	0.0	0.0	0.0	0.0	0.0	0.0	0.0	0.0	0.0	0.0	0.0	2.5	0.0	0.0	0.0	0.0	0.0	2.7	5.3
1	168	16.0	1019	11.8	0	0.0	0.0	0.0	0.0	0.0	0.0	0.0	0.0	0.0	0.0	0.0	0.0	0.0	0.0	0.0	0.0	0.0	0.0	0.0	0.0	0.0	0.0	0.0	0.0	0.0	0.0	0.0	0.0
2/3	84	8.0	825	9.6	2	2.4	0.0	0.0	0.0	12.5	25.0	2.4	2.4	0.0	0.0	0.0	0.0	8.9	17.9	2	4.2	0.0	0.0	0.0	0.0	4.2	0.0	0.0	0.0	0.0	0.0	13.2	26.3
4/6	43	4.1	629	7.3	3	7.0	0.0	0.0	0.0	6.8	13.6	4.8	4.8	0.0	0.0	0.0	0.0	4.3	8.7	1	2.1	0.0	0.0	0.0	0.0	2.1	0.0	0.0	0.0	0.0	1.9	3.8	
>=7	32	3.0	928	10.8	2	6.3	0.0	0.0	0.0	5.9	25.0	2.2	2.2	0.0	0.0	0.0	1.9	11.5	11.5	1	1.5	0.0	0.0	0.0	0.0	1.5	0.0	0.0	0.0	0.0	16.1	16.1	
<b>Non-Invasive Mechanical Ventilation</b>																																	
0	820	78.0	6336	73.6	8	1.0	0.0	0.3	1.4	1.4	4.9	1.3	4.9	1.3	0.0	0.4	1.8	2.4	4.9	5	2.0	0.0	0.0	0.0	0.0	2.0	0.0	0.0	0.0	0.0	5.2	5.3	9.8
1	131	12.5	1004	11.7	4	3.1	0.0	1.1	5.7	12.9	16.7	4.0	16.7	4.0	0.0	1.6	4.8	12.5	18.5	2	5.2	0.0	0.0	0.0	0.0	5.2	0.0	0.0	0.0	2.1	18.8	33.3	
2/3	68	6.5	668	7.8	0	0.0	0.0	0.0	0.0	0.0	0.0	0.0	0.0	0.0	0.0	0.0	0.0	0.0	0.0	0	0.0	0.0	0.0	0.0	0.0	0.0	0.0	0.0	0.0	0.0	0.0	0.0	
4/6	23	2.2	338	3.9	0	0.0	0.0	0.0	0.0	0.0	0.0	0.0	0.0	0.0	0.0	0.0	0.0	0.0	0.0	0	0.0	0.0	0.0	0.0	0.0	0.0	0.0	0.0	0.0	0.0	0.0	0.0	
>=7	9	0.9	266	3.1	0	0.0	0.0	0.0	0.0	0.0	0.0	0.0	0.0	0.0	0.0	0.0	0.0	0.0	0.0	0	0.0	0.0	0.0	0.0	0.0	0.0	0.0	0.0	0.0	0.0	0.0	0.0	
<b>Tracheotomy Intubation</b>																																	
0	1033	98.3	8185	95.0	11	1.1	0.5	0.6	0.9	1.2	4.9	1.3	4.9	1.3	0.5	0.8	1.2	2.1	4.9	6	2.1	0.0	0.8	3.9	5.3	2.1	0.0	0.0	0.0	0.8	3.9	5.3	8.4
1	2	0.2	76	0.9	1	50.0	0.0	0.0	50.0	100.0	100.0	13.2	100.0	13.2	0.0	0.0	20.0	40.0	40.0	1	35.7	0.0	0.0	38.5	76.9	35.7	0.0	0.0	0.0	0.0	38.5	76.9	76.9
2/3	6	0.6	70	0.8	0	0.0	0.0	0.0	0.0	0.0	0.0	0.0	0.0	0.0	0.0	0.0	0.0	0.0	0.0	0	0.0	0.0	0.0	0.0	0.0	0.0	0.0	0.0	0.0	0.0	0.0	0.0	
4/6	2	0.2	30	0.3	0	0.0	0.0	0.0	0.0	0.0	0.0	0.0	0.0	0.0	0.0	0.0	0.0	0.0	0.0	0	0.0	0.0	0.0	0.0	0.0	0.0	0.0	0.0	0.0	0.0	0.0	0.0	
>=7	8	0.8	251	2.9	0	0.0	0.0	0.0	0.0	0.0	0.0	0.0	0.0	0.0	0.0	0.0	0.0	0.0	0.0	0	0.0	0.0	0.0	0.0	0.0	0.0	0.0	0.0	0.0	0.0	0.0	0.0	

<sup>a</sup> pats=patients patdays=patient days NP=Nosocomial Pneumonia; IAP=Intubation Associated NP  
<sup>b</sup> #=#crude number; pats/patdays %=percentage of total pats/patdays; NP %=# NP /100 patients; NP incid = # NP / 1000 patientdays; IAP incid = # NP / 1000 intubation days (before 1st NP); IUR=Intubation Utilization Rate, intubation days / 1000 patientdays



Table 26: Bloodstream Infection and Invasive Device Exposure (a)

	NB <sup>a</sup>												CAB <sup>a</sup>																	
	pats <sup>a</sup>						patdays <sup>a</sup>						NB <sup>a</sup>						CAB <sup>a</sup>											
	# <sup>b</sup>	% <sup>b</sup>	agg	agg	% <sup>b</sup>	# <sup>b</sup>	# <sup>b</sup>	% <sup>b</sup>	agg	agg	% <sup>b</sup>	# <sup>b</sup>	# <sup>b</sup>	% <sup>b</sup>	agg	agg	% <sup>b</sup>	# <sup>b</sup>	# <sup>b</sup>	% <sup>b</sup>	agg	agg	% <sup>b</sup>	# <sup>b</sup>	# <sup>b</sup>	% <sup>b</sup>				
	agg	agg	p10	p25	p50	p75	p90	agg	agg	p10	p25	p50	p75	p90	agg	agg	p10	p25	p50	p75	p90	agg	agg	p10	p25	p50	p75	p90		
<b>Intubation</b>																														
0	665	63.3	4467	51.9	2	0.3	0.0	0.0	0.0	0.0	0.0	0.0	0.0	0.0	0.4	0.0	0.0	0.0	0.0	0.0	0.0	0.0	0.0	0.0	0.0	0.0	0.0	0.0	0.8	5.8
1	195	18.6	1131	13.1	0	0.0	0.0	0.0	0.0	0.0	0.0	0.0	0.0	0.0	0.0	0.0	0.0	0.0	0.0	0.0	0.0	0.0	0.0	0.0	0.0	0.0	0.0	0.0	0.0	0.0
2/3	96	9.1	874	10.1	2	2.1	0.0	0.0	0.0	0.0	11.8	2.3	0.0	0.0	0.0	0.0	0.0	0.0	0.0	0.0	0.0	13.2	2	2.6	0.0	0.0	0.0	0.0	0.0	18.2
4/6	47	4.5	712	8.3	4	8.5	0.0	0.0	5.3	25.0	33.3	5.6	0.0	0.0	14.2	17.2	2	2.9	0.0	0.0	0.0	0.0	0.0	0.0	0.0	0.0	0.0	7.2	18.2	
>=7	48	4.6	1428	16.6	6	12.5	0.0	2.5	12.5	32.2	44.4	4.2	0.0	0.8	5.4	10.4	4	3.0	0.0	0.9	4.1	8.5	10.4							
<b>Central Vascular Catheter</b>																														
0	429	40.8	2887	33.5	0	0.0	0.0	0.0	0.0	0.0	0.0	0.0	0.0	0.0	0.0	0.0	0.0	0.0	0.0	0.0	0.0	0.0	0.0	0.0	0.0	0.0	0.0	0.0	0.0	0.0
1	101	9.6	359	4.2	1	1.0	0.0	0.0	0.0	0.0	25.0	2.8	0.0	0.0	0.0	0.0	0.0	0.0	0.0	0.0	0.0	45.5	1	3.4	0.0	0.0	0.0	0.0	0.0	76.9
2/3	302	28.7	1677	19.5	2	0.7	0.0	0.0	0.0	0.0	6.7	1.2	0.0	0.0	0.0	0.0	0.0	0.0	0.0	0.0	0.0	10.3	2	1.3	0.0	0.0	0.0	0.0	0.0	12.2
4/6	110	10.5	1165	13.5	3	2.7	0.0	0.0	2.2	5.9	11.1	2.6	0.0	0.0	2.2	5.4	8.3	3	2.8	0.0	0.0	2.3	5.6	8.8						
>=7	109	10.4	2524	29.3	8	7.3	0.0	2.3	2.6	12.5	31.3	3.2	0.0	1.0	1.1	6.4	10.5	4	1.7	0.0	0.0	1.1	4.6	7.1						
<b>Urinary Catheter</b>																														
0	198	18.8	1793	20.8	2	1.0	0.0	0.0	0.0	0.0	5.4	1.1	0.0	0.0	0.0	0.0	0.0	0.0	0.0	0.0	0.0	8.1	2	2.0	0.0	0.0	0.0	0.0	0.0	22.7
1	197	18.7	650	7.5	0	0.0	0.0	0.0	0.0	0.0	0.0	0.0	0.0	0.0	0.0	0.0	0.0	0.0	0.0	0.0	0.0	0.0	0.0	0.0	0.0	0.0	0.0	0.0	0.0	0.0
2/3	405	38.5	2186	25.4	2	0.5	0.0	0.0	0.0	0.0	4.8	0.9	0.0	0.0	0.0	0.0	0.0	0.0	0.0	0.0	0.0	8.4	2	1.4	0.0	0.0	0.0	0.0	0.0	17.1
4/6	141	13.4	1444	16.8	2	1.4	0.0	0.0	0.0	1.6	5.9	1.4	0.0	0.0	0.0	1.5	5.5	2	1.8	0.0	0.0	0.0	0.0	0.0	0.0	0.0	0.0	2.0	5.8	
>=7	110	10.5	2539	29.5	8	7.3	0.0	2.5	2.5	10.0	29.4	3.2	0.0	1.0	1.2	5.3	10.2	4	1.8	0.0	0.0	1.1	4.5	7.1						

<sup>a</sup> pats=patients patdays=patient days NB=Nosocomial Bacteremia; CAB=Catheter Associated NB

<sup>b</sup> #=#crude number; pats/patdays %=percentage of total pats/patdays; NB %=# NB /100 patients; NB incid = # NB / 1000 patientdays; CAB incid = # NP / 1000 Catheter days (before 1st NB);



Table 27: Bloodstream Infection and Invasive Device Exposure (b)

		NB <sup>a</sup>										CAB <sup>a</sup>															
		pats <sup>a</sup>					patdays <sup>a</sup>					incd <sup>b</sup>					incd <sup>b</sup>										
		# <sup>b</sup>	% <sup>b</sup>	# <sup>b</sup>	% <sup>b</sup>	# <sup>b</sup>	% <sup>b</sup>	# <sup>b</sup>	% <sup>b</sup>	# <sup>b</sup>	% <sup>b</sup>	# <sup>b</sup>	% <sup>b</sup>	# <sup>b</sup>	% <sup>b</sup>	# <sup>b</sup>	% <sup>b</sup>	# <sup>b</sup>	% <sup>b</sup>	# <sup>b</sup>	% <sup>b</sup>						
		agg	agg	agg	agg	agg	agg	agg	agg	agg	agg	agg	agg	agg	agg	agg	agg	agg	agg	agg	agg	agg					
		p10	p25	p50	p75	p90	p10	p25	p50	p75	p90	p10	p25	p50	p75	p90	p10	p25	p50	p75	p90						
<b>Naso Oro Intestinal Tube without feeding</b>																											
0	603	57.4	4172	48.4	5	0.8	0.0	0.0	0.0	2.0	4.8	1.2	0.0	0.0	2.4	7.3	0.0	0.0	0.0	0.0	1.7	0.0	0.0	0.0	15.6		
1	205	19.5	1178	13.7	2	1.0	0.0	0.0	0.0	2.6	3.7	1.7	0.0	0.0	3.1	4.2	0.0	0.0	0.0	0.0	2.2	0.0	0.0	0.0	3.7	5.9	
2/3	137	13.0	1098	12.7	1	0.7	0.0	0.0	0.0	0.0	1.6	0.9	0.0	0.0	0.0	2.1	0.0	0.0	0.0	0.0	1.1	0.0	0.0	0.0	2.6		
4/6	51	4.9	715	8.3	2	3.9	0.0	0.0	0.0	0.0	28.6	2.8	0.0	0.0	0.0	17.2	0.0	0.0	0.0	0.0	1.6	0.0	0.0	0.0	4.4	8.8	
>=7	55	5.2	1449	16.8	4	7.3	0.0	0.0	2.0	17.0	30.0	2.8	0.0	0.9	5.4	9.2	0.0	0.0	0.0	0.0	1.5	0.0	0.0	0.0	3.4	6.9	
<b>Naso Oro Intestinal Tube with feeding</b>																											
0	859	81.7	5901	68.5	6	0.7	0.0	0.0	0.2	1.4	4.4	1.0	0.0	0.0	0.4	5.3	0.0	0.0	0.0	0.0	0.8	0.0	0.0	0.0	0.6	1.5	6.9
1	44	4.2	315	3.7	0	0.0	0.0	0.0	0.0	0.0	0.0	0.0	0.0	0.0	0.0	0.0	0.0	0.0	0.0	0.0	0.0	0.0	0.0	0.0	0.0	0.0	
2/3	74	7.0	871	10.1	4	5.4	0.0	0.0	6.7	9.5	50.0	4.6	0.0	3.4	11.8	25.6	0.0	0.0	0.0	5.3	0.0	0.0	0.0	3.6	17.1	27.0	
4/6	34	3.2	485	5.6	1	2.9	0.0	0.0	0.0	10.0	20.0	2.1	0.0	0.0	5.6	11.2	0.0	0.0	0.0	2.3	0.0	0.0	0.0	6.0	12.0		
>=7	40	3.8	1040	12.1	3	7.5	0.0	2.5	12.5	26.7	33.3	2.9	0.0	1.0	4.8	9.1	0.0	0.0	0.0	2.2	0.0	0.0	0.0	5.2	10.4	10.4	
<b>Parenteral Nutrition</b>																											
0	950	90.4	7066	82.0	10	1.1	0.0	0.4	0.6	2.2	4.6	1.4	0.0	0.6	0.7	2.8	6.5	0.0	0.0	0.4	1.7	0.0	0.0	0.4	0.9	1.6	12.2
1	21	2.0	163	1.9	0	0.0	0.0	0.0	0.0	0.0	0.0	0.0	0.0	0.0	0.0	0.0	0.0	0.0	0.0	0.0	0.0	0.0	0.0	0.0	0.0	0.0	
2/3	43	4.1	488	5.7	0	0.0	0.0	0.0	0.0	0.0	0.0	0.0	0.0	0.0	0.0	0.0	0.0	0.0	0.0	0.0	0.0	0.0	0.0	0.0	0.0	0.0	
4/6	21	2.0	400	4.6	2	9.5	0.0	0.0	0.0	25.0	50.0	5.0	0.0	0.0	10.9	21.7	0.0	0.0	0.0	2.6	0.0	0.0	0.0	0.0	5.5	11.0	
>=7	16	1.5	495	5.7	2	12.5	0.0	0.0	0.0	33.3	66.7	4.0	0.0	0.0	6.8	13.5	0.0	0.0	0.0	2.1	0.0	0.0	0.0	0.0	6.8	6.8	

<sup>a</sup> pats=patients patdays=patient days NB=Nosocomial Bacteremia; CAB=Catheter Associated NB

<sup>b</sup> #=#crude number; pats/patdays %=percentage of total pats/patdays; NB %=# NB /100 patients; NB incd = # NB / 1000 patientdays; CAB incd = # NP / 1000 Catheter days (before 1st NB);



Table 28: Bloodstream Infection and Invasive Device Exposure (c)

		pats <sup>a</sup>						patdays <sup>a</sup>						NB <sup>a</sup>						CAB <sup>a</sup>									
		# <sup>b</sup>		% <sup>b</sup>		# <sup>b</sup>		% <sup>b</sup>		# <sup>b</sup>		% <sup>b</sup>		# <sup>b</sup>		% <sup>b</sup>		# <sup>b</sup>		% <sup>b</sup>		# <sup>b</sup>		% <sup>b</sup>					
		agg	agg	agg	agg	p10	p25	p50	p75	p90	agg	p10	p25	p50	p75	p90	agg	p10	p25	p50	p75	p90	agg	p10	p25	p50	p75	p90	
<b>Invasive Mechanical Ventilation</b>																													
0	724	68.9	5238	60.8	7	1.0	0.0	0.0	0.0	0.3	5.9	1.3	0.0	0.0	0.4	5.9	4	1.3	0.0	0.0	0.0	0.8	3.3						
1	169	16.1	1026	11.9	1	0.6	0.0	0.0	0.0	6.3	12.5	1.0	0.0	0.0	13.5	27.0	1	1.3	0.0	0.0	0.0	23.8	47.6						
2/3	84	8.0	795	9.2	2	2.4	0.0	0.0	0.0	6.3	12.5	2.5	0.0	0.0	7.4	14.7	2	2.9	0.0	0.0	0.0	10.4	20.8						
4/6	42	4.0	632	7.3	2	4.8	0.0	0.0	2.5	19.2	33.3	3.2	0.0	0.0	10.2	17.2	1	1.7	0.0	0.0	0.0	9.1	18.2						
>=7	32	3.0	921	10.7	2	6.3	0.0	0.0	5.9	25.0	25.0	2.2	0.0	0.0	12.5	12.5	2	2.3	0.0	0.0	2.0	13.9	13.9						
<b>Non-Invasive Mechanical Ventilation</b>																													
0	822	78.2	6444	74.8	12	1.5	0.0	0.0	0.6	5.9	6.8	1.9	0.0	0.0	0.6	5.9	9	1.9	0.0	0.0	0.7	3.3	16.0						
1	127	12.1	854	9.9	0	0.0	0.0	0.0	0.0	0.0	0.0	0.0	0.0	0.0	0.0	0.0	0	0.0	0.0	0.0	0.0	0.0	0.0						
2/3	69	6.6	678	7.9	1	1.4	0.0	0.0	0.0	1.5	3.0	1.5	0.0	0.0	1.6	3.3	1	2.2	0.0	0.0	2.4	4.7							
4/6	24	2.3	370	4.3	1	4.2	0.0	0.0	0.0	2.8	5.6	2.7	0.0	0.0	1.7	3.4	0	0.0	0.0	0.0	0.0	0.0							
>=7	9	0.9	266	3.1	0	0.0	0.0	0.0	0.0	0.0	0.0	0.0	0.0	0.0	0.0	0.0	0	0.0	0.0	0.0	0.0	0.0							
<b>Tracheotomy Intubation</b>																													
0	1033	98.3	8203	95.3	13	1.3	0.0	0.4	0.5	3.6	5.9	1.6	0.0	0.5	4.8	5.9	9	1.6	0.0	0.4	0.6	3.3	9.0						
1	2	0.2	58	0.7	1	50.0	0.0	0.0	50.0	100.0	100.0	17.2	0.0	0.0	71.4	142.9	1	17.5	0.0	0.0	71.4	142.9	142.9						
2/3	6	0.6	70	0.8	0	0.0	0.0	0.0	0.0	0.0	0.0	0.0	0.0	0.0	0.0	0.0	0	0.0	0.0	0.0	0.0	0.0							
4/6	2	0.2	30	0.3	0	0.0	0.0	0.0	0.0	0.0	0.0	0.0	0.0	0.0	0.0	0.0	0	0.0	0.0	0.0	0.0	0.0							
>=7	8	0.8	251	2.9	0	0.0	0.0	0.0	0.0	0.0	0.0	0.0	0.0	0.0	0.0	0.0	0	0.0	0.0	0.0	0.0	0.0							

<sup>a</sup> pats=patients patdays=patient days NB=Nosocomial Bacteremia; CAB=Catheter Associated NB

<sup>b</sup> #=#crude number; pats/patdays %=percentage of total pats/patdays; NB %=# NB /100 patients; NB incid = # NB / 1000 patientdays; CAB incid = # NP / 1000 Catheter days (before 1st NB);



Table 29: Pneumonia and SOFAscore (a)

	pats <sup>a</sup>		patdays <sup>a</sup>		NP <sup>a</sup>										IAP <sup>a</sup>								
	# <sup>b</sup>	% <sup>b</sup>	# <sup>b</sup>	% <sup>b</sup>	agg	p10	p25	p50	p75	p90	agg	p10	p25	p50	p75	p90	agg	p10	p25	p50	p75	p90	
<b>mean CNS SOFA score</b>																							
0	43	1.5	284	1.4	0	0.0	0.0	0.0	0.0	0.0	0.0	0.0	0.0	0.0	0.0	0.0	0.0	0.0	0.0	0.0	0.0	0.0	0.0
0.1/1	48	1.7	416	2.0	1	2.1	2.1	2.1	2.1	2.1	2.4	2.4	2.4	2.4	2.4	2.4	1	7.9	7.9	7.9	7.9	7.9	7.9
1.1/2	14	0.5	89	0.4	0	0.0	0.0	0.0	0.0	0.0	0.0	0.0	0.0	0.0	0.0	0.0	0	0.0	0.0	0.0	0.0	0.0	0.0
2.1/3	1	0.0	4	0.0	0	0.0	0.0	0.0	0.0	0.0	0.0	0.0	0.0	0.0	0.0	0.0	0	0.0	0.0	0.0	0.0	0.0	0.0
3.1/4	6	0.2	36	0.2	0	0.0	0.0	0.0	0.0	0.0	0.0	0.0	0.0	0.0	0.0	0.0	0	0.0	0.0	0.0	0.0	0.0	0.0
<b>mean Respiratory SOFA score</b>																							
0	12	0.4	52	0.2	0	0.0	0.0	0.0	0.0	0.0	0.0	0.0	0.0	0.0	0.0	0.0	0	0.0	0.0	0.0	0.0	0.0	0.0
0.1/1	18	0.6	99	0.5	0	0.0	0.0	0.0	0.0	0.0	0.0	0.0	0.0	0.0	0.0	0.0	0	0.0	0.0	0.0	0.0	0.0	0.0
1.1/2	50	1.7	407	1.9	1	2.0	2.0	2.0	2.0	2.0	2.5	2.5	2.5	2.5	2.5	2.5	1	8.3	8.3	8.3	8.3	8.3	8.3
2.1/3	28	1.0	210	1.0	0	0.0	0.0	0.0	0.0	0.0	0.0	0.0	0.0	0.0	0.0	0.0	0	0.0	0.0	0.0	0.0	0.0	0.0
3.1/4	2	0.1	14	0.1	0	0.0	0.0	0.0	0.0	0.0	0.0	0.0	0.0	0.0	0.0	0.0	0	0.0	0.0	0.0	0.0	0.0	0.0
<b>mean Coagulation SOFA score</b>																							
0	77	2.7	514	2.5	1	1.3	1.3	1.3	1.3	1.3	1.9	1.9	1.9	1.9	1.9	1.9	1	7.2	7.2	7.2	7.2	7.2	7.2
0.1/1	16	0.6	140	0.7	0	0.0	0.0	0.0	0.0	0.0	0.0	0.0	0.0	0.0	0.0	0.0	0	0.0	0.0	0.0	0.0	0.0	0.0
1.1/2	9	0.3	52	0.2	0	0.0	0.0	0.0	0.0	0.0	0.0	0.0	0.0	0.0	0.0	0.0	0	0.0	0.0	0.0	0.0	0.0	0.0
2.1/3	6	0.2	94	0.4	0	0.0	0.0	0.0	0.0	0.0	0.0	0.0	0.0	0.0	0.0	0.0	0	0.0	0.0	0.0	0.0	0.0	0.0
3.1/4	4	0.1	29	0.1	0	0.0	0.0	0.0	0.0	0.0	0.0	0.0	0.0	0.0	0.0	0.0	0	0.0	0.0	0.0	0.0	0.0	0.0

<sup>a</sup> pats=patients patdays=patient days NP=Nosocomial Pneumonia; IAP=Intubation Associated NP  
<sup>b</sup> #=#crude number; pats/patdays %=percentage of total pats/patdays; NP %=# NP / 100 patients; NP incid = # NP / 1000 patientdays; IAP incid = # NP / 1000 intubation days (before 1st NP);



Table 30: Pneumonia and SOFAscore (b)

	pats <sup>a</sup>		patdays <sup>a</sup>		NP <sup>a</sup>										IAP <sup>a</sup>																
	# <sup>b</sup>	agg	% <sup>b</sup>	agg	# <sup>b</sup>	% <sup>b</sup>	p25	p50	p75	p90	agg	p10	p25	p50	p75	p90	agg	p10	p25	p50	p75	p90	# <sup>b</sup>	agg	p10	p25	p50	p75	p90		
																														incd <sup>b</sup>	incd <sup>b</sup>
<b>mean Cardiovascular SOFA score</b>																															
0	46	1.6	258	1.2	1	2.2	2.2	2.2	2.2	2.2	3.9	3.9	3.9	3.9	3.9	3.9	3.9	3.9	3.9	3.9	3.9	3.9	3.9	1	30.3	30.3	30.3	30.3	30.3	30.3	30.3
0.1/1	37	1.3	312	1.5	0	0.0	0.0	0.0	0.0	0.0	0.0	0.0	0.0	0.0	0.0	0.0	0.0	0.0	0.0	0.0	0.0	0.0	0.0	0	0.0	0.0	0.0	0.0	0.0	0.0	0.0
1.1/2	18	0.6	174	0.8	0	0.0	0.0	0.0	0.0	0.0	0.0	0.0	0.0	0.0	0.0	0.0	0.0	0.0	0.0	0.0	0.0	0.0	0.0	0	0.0	0.0	0.0	0.0	0.0	0.0	0.0
2.1/3	9	0.3	70	0.3	0	0.0	0.0	0.0	0.0	0.0	0.0	0.0	0.0	0.0	0.0	0.0	0.0	0.0	0.0	0.0	0.0	0.0	0.0	0	0.0	0.0	0.0	0.0	0.0	0.0	0.0
3.1/4	2	0.1	15	0.1	0	0.0	0.0	0.0	0.0	0.0	0.0	0.0	0.0	0.0	0.0	0.0	0.0	0.0	0.0	0.0	0.0	0.0	0.0	0	0.0	0.0	0.0	0.0	0.0	0.0	0.0
<b>mean Renal SOFA score</b>																															
0	49	1.7	306	1.5	1	2.0	2.0	2.0	2.0	2.0	3.3	3.3	3.3	3.3	3.3	3.3	3.3	3.3	3.3	3.3	3.3	3.3	3.3	1	10.6	10.6	10.6	10.6	10.6	10.6	10.6
0.1/1	31	1.1	222	1.1	0	0.0	0.0	0.0	0.0	0.0	0.0	0.0	0.0	0.0	0.0	0.0	0.0	0.0	0.0	0.0	0.0	0.0	0.0	0	0.0	0.0	0.0	0.0	0.0	0.0	0.0
1.1/2	16	0.6	135	0.6	0	0.0	0.0	0.0	0.0	0.0	0.0	0.0	0.0	0.0	0.0	0.0	0.0	0.0	0.0	0.0	0.0	0.0	0.0	0	0.0	0.0	0.0	0.0	0.0	0.0	0.0
2.1/3	9	0.3	95	0.5	0	0.0	0.0	0.0	0.0	0.0	0.0	0.0	0.0	0.0	0.0	0.0	0.0	0.0	0.0	0.0	0.0	0.0	0.0	0	0.0	0.0	0.0	0.0	0.0	0.0	0.0
3.1/4	6	0.2	41	0.2	0	0.0	0.0	0.0	0.0	0.0	0.0	0.0	0.0	0.0	0.0	0.0	0.0	0.0	0.0	0.0	0.0	0.0	0.0	0	0.0	0.0	0.0	0.0	0.0	0.0	0.0
<b>mean Liver SOFA score</b>																															
0	83	2.9	582	2.8	1	1.2	1.2	1.2	1.2	1.2	1.7	1.7	1.7	1.7	1.7	1.7	1.7	1.7	1.7	1.7	1.7	1.7	1.7	1	5.6	5.6	5.6	5.6	5.6	5.6	5.6
0.1/1	19	0.7	135	0.6	0	0.0	0.0	0.0	0.0	0.0	0.0	0.0	0.0	0.0	0.0	0.0	0.0	0.0	0.0	0.0	0.0	0.0	0.0	0	0.0	0.0	0.0	0.0	0.0	0.0	0.0
1.1/2	7	0.2	68	0.3	0	0.0	0.0	0.0	0.0	0.0	0.0	0.0	0.0	0.0	0.0	0.0	0.0	0.0	0.0	0.0	0.0	0.0	0.0	0	0.0	0.0	0.0	0.0	0.0	0.0	0.0
2.1/3	0	0.0	0	0.0	0	0.0	0.0	0.0	0.0	0.0	0.0	0.0	0.0	0.0	0.0	0.0	0.0	0.0	0.0	0.0	0.0	0.0	0.0	0	0.0	0.0	0.0	0.0	0.0	0.0	0.0
3.1/4	3	0.1	44	0.2	0	0.0	0.0	0.0	0.0	0.0	0.0	0.0	0.0	0.0	0.0	0.0	0.0	0.0	0.0	0.0	0.0	0.0	0.0	0	0.0	0.0	0.0	0.0	0.0	0.0	0.0
<b>mean Total SOFA score</b>																															
0/1	9	0.3	37	0.2	0	0.0	0.0	0.0	0.0	0.0	0.0	0.0	0.0	0.0	0.0	0.0	0.0	0.0	0.0	0.0	0.0	0.0	0.0	0	0.0	0.0	0.0	0.0	0.0	0.0	0.0
2	16	0.6	132	0.6	1	6.3	6.3	6.3	6.3	6.3	7.6	7.6	7.6	7.6	7.6	7.6	7.6	7.6	7.6	7.6	7.6	7.6	7.6	1	29.4	29.4	29.4	29.4	29.4	29.4	29.4
3/4	45	1.6	315	1.5	0	0.0	0.0	0.0	0.0	0.0	0.0	0.0	0.0	0.0	0.0	0.0	0.0	0.0	0.0	0.0	0.0	0.0	0.0	0	0.0	0.0	0.0	0.0	0.0	0.0	0.0
5/6	22	0.8	164	0.8	0	0.0	0.0	0.0	0.0	0.0	0.0	0.0	0.0	0.0	0.0	0.0	0.0	0.0	0.0	0.0	0.0	0.0	0.0	0	0.0	0.0	0.0	0.0	0.0	0.0	0.0
7/max	20	0.7	181	0.9	0	0.0	0.0	0.0	0.0	0.0	0.0	0.0	0.0	0.0	0.0	0.0	0.0	0.0	0.0	0.0	0.0	0.0	0.0	0	0.0	0.0	0.0	0.0	0.0	0.0	0.0

<sup>a</sup> pats=patients patdays=patient days NP=Nosocomial Pneumonia; IAP=Intubation Associated NP

<sup>b</sup> #=#crude number; pats/patdays %=percentage of total pats/patdays; NP %=# NP /100 patients; NP incd = # NP / 1000 patientdays; IAP incd = # NP / 1000 intubation days (before 1st NP);



Table 31: Bloodstream Infections and SOFAScore (a)

	pats <sup>a</sup>						patdays <sup>a</sup>						NB <sup>a</sup>						CAB <sup>a</sup>																						
	# <sup>b</sup>		% <sup>b</sup>		# <sup>b</sup>		% <sup>b</sup>		# <sup>b</sup>		% <sup>b</sup>		# <sup>b</sup>		% <sup>b</sup>		# <sup>b</sup>		% <sup>b</sup>		# <sup>b</sup>		% <sup>b</sup>																		
	agg	agg	agg	agg	agg	agg	p10	p25	p50	p75	p90	agg	p10	p25	p50	p75	p90	agg	p10	p25	p50	p75	p90	agg	p10	p25	p50	p75	p90												
<b>mean CNS SOFA score</b>																																									
0	43	1.5	284	1.4	3	7.0	7.0	7.0	7.0	7.0	10.6	10.6	10.6	10.6	10.6	10.6	10.6	10.6	10.6	10.6	10.6	10.6	10.6	23.4	23.4	23.4	23.4	23.4	23.4	23.4	23.4	23.4	23.4	23.4	23.4	23.4	23.4				
0.1/1	47	1.6	377	1.8	1	2.1	2.1	2.1	2.1	2.1	2.7	2.7	2.7	2.7	2.7	2.7	2.7	2.7	2.7	2.7	2.7	2.7	2.7	4.7	4.7	4.7	4.7	4.7	4.7	4.7	4.7	4.7	4.7	4.7	4.7	4.7	4.7	4.7			
1.1/2	15	0.5	128	0.6	1	6.7	6.7	6.7	6.7	6.7	7.8	7.8	7.8	7.8	7.8	7.8	7.8	7.8	7.8	7.8	7.8	7.8	7.8	10.5	10.5	10.5	10.5	10.5	10.5	10.5	10.5	10.5	10.5	10.5	10.5	10.5	10.5	10.5	10.5		
2.1/3	1	0.0	4	0.0	0	0.0	0.0	0.0	0.0	0.0	0.0	0.0	0.0	0.0	0.0	0.0	0.0	0.0	0.0	0.0	0.0	0.0	0.0	0.0	0.0	0.0	0.0	0.0	0.0	0.0	0.0	0.0	0.0	0.0	0.0	0.0	0.0	0.0	0.0		
3.1/4	6	0.2	36	0.2	0	0.0	0.0	0.0	0.0	0.0	0.0	0.0	0.0	0.0	0.0	0.0	0.0	0.0	0.0	0.0	0.0	0.0	0.0	0.0	0.0	0.0	0.0	0.0	0.0	0.0	0.0	0.0	0.0	0.0	0.0	0.0	0.0	0.0	0.0	0.0	
<b>mean Respiratory SOFA score</b>																																									
0	12	0.4	52	0.2	0	0.0	0.0	0.0	0.0	0.0	0.0	0.0	0.0	0.0	0.0	0.0	0.0	0.0	0.0	0.0	0.0	0.0	0.0	0.0	0.0	0.0	0.0	0.0	0.0	0.0	0.0	0.0	0.0	0.0	0.0	0.0	0.0	0.0	0.0		
0.1/1	18	0.6	99	0.5	0	0.0	0.0	0.0	0.0	0.0	0.0	0.0	0.0	0.0	0.0	0.0	0.0	0.0	0.0	0.0	0.0	0.0	0.0	0.0	0.0	0.0	0.0	0.0	0.0	0.0	0.0	0.0	0.0	0.0	0.0	0.0	0.0	0.0	0.0	0.0	
1.1/2	49	1.7	368	1.8	2	4.1	4.1	4.1	4.1	4.1	5.4	5.4	5.4	5.4	5.4	5.4	5.4	5.4	5.4	5.4	5.4	5.4	5.4	12.3	12.3	12.3	12.3	12.3	12.3	12.3	12.3	12.3	12.3	12.3	12.3	12.3	12.3	12.3	12.3	12.3	
2.1/3	31	1.1	283	1.3	3	9.7	9.7	9.7	9.7	9.7	10.6	10.6	10.6	10.6	10.6	10.6	10.6	10.6	10.6	10.6	10.6	10.6	10.6	15.8	15.8	15.8	15.8	15.8	15.8	15.8	15.8	15.8	15.8	15.8	15.8	15.8	15.8	15.8	15.8	15.8	
3.1/4	1	0.0	5	0.0	0	0.0	0.0	0.0	0.0	0.0	0.0	0.0	0.0	0.0	0.0	0.0	0.0	0.0	0.0	0.0	0.0	0.0	0.0	0.0	0.0	0.0	0.0	0.0	0.0	0.0	0.0	0.0	0.0	0.0	0.0	0.0	0.0	0.0	0.0	0.0	
<b>mean Coagulation SOFA score</b>																																									
0	77	2.7	514	2.5	2	2.6	2.6	2.6	2.6	2.6	3.9	3.9	3.9	3.9	3.9	3.9	3.9	3.9	3.9	3.9	3.9	3.9	3.9	8.8	8.8	8.8	8.8	8.8	8.8	8.8	8.8	8.8	8.8	8.8	8.8	8.8	8.8	8.8	8.8	8.8	
0.1/1	16	0.6	140	0.7	1	6.3	6.3	6.3	6.3	6.3	7.1	7.1	7.1	7.1	7.1	7.1	7.1	7.1	7.1	7.1	7.1	7.1	7.1	9.6	9.6	9.6	9.6	9.6	9.6	9.6	9.6	9.6	9.6	9.6	9.6	9.6	9.6	9.6	9.6	9.6	9.6
1.1/2	9	0.3	52	0.2	0	0.0	0.0	0.0	0.0	0.0	0.0	0.0	0.0	0.0	0.0	0.0	0.0	0.0	0.0	0.0	0.0	0.0	0.0	0.0	0.0	0.0	0.0	0.0	0.0	0.0	0.0	0.0	0.0	0.0	0.0	0.0	0.0	0.0	0.0	0.0	
2.1/3	6	0.2	64	0.3	1	16.7	16.7	16.7	16.7	16.7	16.7	16.7	16.7	16.7	16.7	16.7	16.7	16.7	16.7	16.7	16.7	16.7	16.7	30.3	30.3	30.3	30.3	30.3	30.3	30.3	30.3	30.3	30.3	30.3	30.3	30.3	30.3	30.3	30.3	30.3	
3.1/4	4	0.1	59	0.3	1	25.0	25.0	25.0	25.0	25.0	16.9	16.9	16.9	16.9	16.9	16.9	16.9	16.9	16.9	16.9	16.9	16.9	16.9	21.3	21.3	21.3	21.3	21.3	21.3	21.3	21.3	21.3	21.3	21.3	21.3	21.3	21.3	21.3	21.3	21.3	

<sup>a</sup> pats=patients patdays=patient days NB=Nosocomial Bacteremia; CAB=Catheter Associated NB

<sup>b</sup> #=#crude number; pats/patdays %=percentage of total pats/patdays; NB %=# NB /100 patients; NB incid = # NB / 1000 patientdays; CAB incid = # NP / 1000 Catheter days (before 1st NB);





Table 32: Bloodstream Infections and SOFAScore (b)

		NB <sup>a</sup>										CAB <sup>a</sup>																				
pats <sup>a</sup>		patdays <sup>a</sup>					% <sup>b</sup>					incd <sup>b</sup>					incd <sup>b</sup>															
# <sup>b</sup>	% <sup>b</sup>	# <sup>b</sup>	% <sup>b</sup>	# <sup>b</sup>	% <sup>b</sup>	# <sup>b</sup>	% <sup>b</sup>	# <sup>b</sup>	% <sup>b</sup>	# <sup>b</sup>	% <sup>b</sup>	# <sup>b</sup>	% <sup>b</sup>	# <sup>b</sup>	% <sup>b</sup>	# <sup>b</sup>	% <sup>b</sup>	# <sup>b</sup>	% <sup>b</sup>	# <sup>b</sup>	% <sup>b</sup>											
agg	agg	agg	agg	agg	agg	agg	agg	agg	agg	agg	agg	agg	agg	agg	agg	agg	agg	agg	agg	agg	agg	agg										
		p10	p25	p50	p75	p90	p10	p25	p50	p75	p90	p10	p25	p50	p75	p90	p10	p25	p50	p75	p90	p10	p25	p50	p75	p90						
<b>mean Cardiovascular SOFA score</b>																																
0	46	1.6	258	1.2	0	0.0	0.0	0.0	0.0	0.0	0.0	0.0	0.0	0.0	0.0	0.0	0.0	0.0	0.0	0.0	0.0	0.0	0.0	0.0	0.0	0.0	0.0	0.0	0.0			
0.1/1	36	1.2	273	1.3	1	2.8	2.8	2.8	2.8	2.8	2.8	3.7	3.7	3.7	3.7	3.7	3.7	3.7	3.7	3.7	3.7	3.7	3.7	3.7	3.7	3.7	3.7	3.7	3.7	3.7		
1.1/2	18	0.6	194	0.9	1	5.6	5.6	5.6	5.6	5.6	5.6	5.2	5.2	5.2	5.2	5.2	5.2	5.2	5.2	5.2	5.2	5.2	5.2	5.2	5.2	5.2	5.2	5.2	5.2	5.2		
2.1/3	10	0.3	89	0.4	3	30.0	30.0	30.0	30.0	30.0	30.0	33.7	33.7	33.7	33.7	33.7	33.7	33.7	33.7	33.7	33.7	33.7	33.7	33.7	33.7	33.7	33.7	33.7	33.7	33.7	33.7	
3.1/4	2	0.1	15	0.1	0	0.0	0.0	0.0	0.0	0.0	0.0	0.0	0.0	0.0	0.0	0.0	0.0	0.0	0.0	0.0	0.0	0.0	0.0	0.0	0.0	0.0	0.0	0.0	0.0	0.0	0.0	
<b>mean Renal SOFA score</b>																																
0	50	1.7	315	1.5	3	6.0	6.0	6.0	6.0	6.0	6.0	9.5	9.5	9.5	9.5	9.5	9.5	9.5	9.5	9.5	9.5	9.5	9.5	9.5	9.5	9.5	9.5	9.5	9.5	9.5	9.5	
0.1/1	31	1.1	222	1.1	1	3.2	3.2	3.2	3.2	3.2	3.2	4.5	4.5	4.5	4.5	4.5	4.5	4.5	4.5	4.5	4.5	4.5	4.5	4.5	4.5	4.5	4.5	4.5	4.5	4.5	4.5	
1.1/2	15	0.5	126	0.6	0	0.0	0.0	0.0	0.0	0.0	0.0	0.0	0.0	0.0	0.0	0.0	0.0	0.0	0.0	0.0	0.0	0.0	0.0	0.0	0.0	0.0	0.0	0.0	0.0	0.0	0.0	
2.1/3	8	0.3	56	0.3	0	0.0	0.0	0.0	0.0	0.0	0.0	0.0	0.0	0.0	0.0	0.0	0.0	0.0	0.0	0.0	0.0	0.0	0.0	0.0	0.0	0.0	0.0	0.0	0.0	0.0	0.0	
3.1/4	7	0.2	80	0.4	1	14.3	14.3	14.3	14.3	14.3	14.3	12.5	12.5	12.5	12.5	12.5	12.5	12.5	12.5	12.5	12.5	12.5	12.5	12.5	12.5	12.5	12.5	12.5	12.5	12.5	12.5	12.5
<b>mean Liver SOFA score</b>																																
0	83	2.9	582	2.8	3	3.6	3.6	3.6	3.6	3.6	3.6	5.2	5.2	5.2	5.2	5.2	5.2	5.2	5.2	5.2	5.2	5.2	5.2	5.2	5.2	5.2	5.2	5.2	5.2	5.2	5.2	
0.1/1	19	0.7	135	0.6	1	5.3	5.3	5.3	5.3	5.3	5.3	7.4	7.4	7.4	7.4	7.4	7.4	7.4	7.4	7.4	7.4	7.4	7.4	7.4	7.4	7.4	7.4	7.4	7.4	7.4	7.4	
1.1/2	7	0.2	68	0.3	1	14.3	14.3	14.3	14.3	14.3	14.3	14.7	14.7	14.7	14.7	14.7	14.7	14.7	14.7	14.7	14.7	14.7	14.7	14.7	14.7	14.7	14.7	14.7	14.7	14.7	14.7	14.7
2.1/3	0	0.0	0	0.0	0	0.0	0.0	0.0	0.0	0.0	0.0	0.0	0.0	0.0	0.0	0.0	0.0	0.0	0.0	0.0	0.0	0.0	0.0	0.0	0.0	0.0	0.0	0.0	0.0	0.0	0.0	
3.1/4	3	0.1	44	0.2	0	0.0	0.0	0.0	0.0	0.0	0.0	0.0	0.0	0.0	0.0	0.0	0.0	0.0	0.0	0.0	0.0	0.0	0.0	0.0	0.0	0.0	0.0	0.0	0.0	0.0	0.0	
<b>mean Total SOFA score</b>																																
0/1	10	0.3	69	0.3	0	0.0	0.0	0.0	0.0	0.0	0.0	0.0	0.0	0.0	0.0	0.0	0.0	0.0	0.0	0.0	0.0	0.0	0.0	0.0	0.0	0.0	0.0	0.0	0.0	0.0	0.0	
2	15	0.5	100	0.5	1	6.7	6.7	6.7	6.7	6.7	6.7	10.0	10.0	10.0	10.0	10.0	10.0	10.0	10.0	10.0	10.0	10.0	10.0	10.0	10.0	10.0	10.0	10.0	10.0	10.0	10.0	
3/4	44	1.5	296	1.4	0	0.0	0.0	0.0	0.0	0.0	0.0	0.0	0.0	0.0	0.0	0.0	0.0	0.0	0.0	0.0	0.0	0.0	0.0	0.0	0.0	0.0	0.0	0.0	0.0	0.0	0.0	
5/6	23	0.8	183	0.9	2	8.7	8.7	8.7	8.7	8.7	8.7	10.9	10.9	10.9	10.9	10.9	10.9	10.9	10.9	10.9	10.9	10.9	10.9	10.9	10.9	10.9	10.9	10.9	10.9	10.9	10.9	
7/max	20	0.7	181	0.9	2	10.0	10.0	10.0	10.0	10.0	10.0	11.0	11.0	11.0	11.0	11.0	11.0	11.0	11.0	11.0	11.0	11.0	11.0	11.0	11.0	11.0	11.0	11.0	11.0	11.0	11.0	

<sup>a</sup> pats=patients patdays=patient days NB=Nosocomial Bacteremia; CAB=Catheter Associated NB  
<sup>b</sup> #=#crude number; pats/patdays %=percentage of total pats/patdays; NB %=# NB /100 patients; NB incid = # NB / 1000 patientdays; CAB incid = # NP / 1000 Catheter days (before 1st NB);



Table 33: Pneumonia and Antibiotic Use

	pats <sup>a</sup>				patdays <sup>a</sup>				NP <sup>a</sup>										IAP <sup>a</sup>						
	# <sup>b</sup>		% <sup>b</sup>		# <sup>b</sup>		% <sup>b</sup>		# <sup>b</sup>		% <sup>b</sup>		# <sup>b</sup>		% <sup>b</sup>		# <sup>b</sup>		% <sup>b</sup>		# <sup>b</sup>		% <sup>b</sup>		
	agg	agg	agg	agg	agg	agg	agg	agg	agg	agg	agg	agg	agg	agg	agg	agg	agg	agg	agg	agg	agg	agg	agg	agg	
<b>total Antibiotic Use days</b>																									
0	325	11.3	2232	10.6	0	0.0	0.0	0.0	0.0	0.0	0.0	0.0	0.0	0.0	0.0	0.0	0.0	0.0	0.0	0.0	0.0	0.0	0.0	0.0	
1	22	0.8	127	0.6	0	0.0	0.0	0.0	0.0	0.0	0.0	0.0	0.0	0.0	0.0	0.0	0.0	0.0	0.0	0.0	0.0	0.0	0.0	0.0	
2/3	88	3.0	369	1.8	0	0.0	0.0	0.0	0.0	0.0	0.0	0.0	0.0	0.0	0.0	0.0	0.0	0.0	0.0	0.0	0.0	0.0	0.0	0.0	
4/6	169	5.9	967	4.6	2	1.2	0.0	0.0	2.4	2.4	2.1	0.0	0.0	4.3	4.3	0	0.0	0.0	0.0	0.0	0.0	0.0	0.0	0.0	
>=7	259	9.0	3387	16.2	3	1.2	0.8	0.8	1.0	2.9	2.9	0.9	0.6	0.7	2.7	2.7	2	1.5	0.0	0.0	1.8	7.3	7.3	7.3	
<b>SDD Antibiotic Use days</b>																									
0	863	29.9	7082	33.8	5	0.6	0.5	0.5	0.6	0.9	0.9	0.7	0.4	0.4	0.8	1.2	1.2	0.8	0.0	0.0	0.7	3.9	3.9	3.9	
1	0	0.0	0	0.0	0	0.0	0.0	0.0	0.0	0	0	0	0	0	0	0	0	0	0	0	0	0	0	0	
2/3	0	0.0	0	0.0	0	0.0	0.0	0.0	0.0	0	0	0	0	0	0	0	0	0	0	0	0	0	0	0	
4/6	0	0.0	0	0.0	0	0.0	0.0	0.0	0.0	0	0	0	0	0	0	0	0	0	0	0	0	0	0	0	
>=7	0	0.0	0	0.0	0	0.0	0.0	0.0	0.0	0	0	0	0	0	0	0	0	0	0	0	0	0	0	0	
<b>Profylactic Antibiotic Use days</b>																									
0	801	27.7	6648	31.7	5	0.6	0.5	0.5	0.6	1.0	1.0	0.8	0.5	0.5	0.8	1.3	1.3	0.9	0.0	0.0	0.8	3.9	3.9	3.9	
1	23	0.8	172	0.8	0	0.0	0.0	0.0	0.0	0.0	0.0	0.0	0.0	0.0	0.0	0.0	0.0	0.0	0.0	0.0	0.0	0.0	0.0	0.0	
2/3	18	0.6	85	0.4	0	0.0	0.0	0.0	0.0	0.0	0.0	0.0	0.0	0.0	0.0	0.0	0.0	0.0	0.0	0.0	0.0	0.0	0.0	0.0	
4/6	15	0.5	115	0.5	0	0.0	0.0	0.0	0.0	0.0	0.0	0.0	0.0	0.0	0.0	0.0	0.0	0.0	0.0	0.0	0.0	0.0	0.0	0.0	
>=7	6	0.2	62	0.3	0	0.0	0.0	0.0	0.0	0.0	0.0	0.0	0.0	0.0	0.0	0.0	0.0	0.0	0.0	0.0	0.0	0.0	0.0	0.0	
<b>Empirical Antibiotic Use days</b>																									
0	408	14.1	2810	13.4	0	0.0	0.0	0.0	0.0	0.0	0.0	0.0	0.0	0.0	0.0	0.0	0.0	0.0	0.0	0.0	0.0	0.0	0.0	0.0	
1	20	0.7	147	0.7	0	0.0	0.0	0.0	0.0	0.0	0.0	0.0	0.0	0.0	0.0	0.0	0.0	0.0	0.0	0.0	0.0	0.0	0.0	0.0	
2/3	105	3.6	585	2.8	1	1.0	0.0	0.0	1.4	1.4	1.7	1.0	0.0	0.0	2.4	2.4	0	0.0	0.0	0.0	0.0	0.0	0.0	0.0	
4/6	146	5.1	914	4.4	1	0.7	0.0	0.0	1.5	1.5	1.1	0.0	0.0	0.0	2.4	2.4	0	0.0	0.0	0.0	0.0	0.0	0.0	0.0	
>=7	184	6.4	2626	12.5	3	1.6	1.1	1.1	1.4	5.3	5.3	1.1	0.7	0.7	1.0	4.4	4.4	1.7	0.0	0.0	2.3	11.4	11.4	11.4	

<sup>a</sup> pats=patients patdays=patient days NP=Nosocomial Pneumonia; IAP=Intubation Associated NP

<sup>b</sup> #=#crude number; pats/patdays %=percentage of total pats/patdays; NP %=# NP / 100 patients; NP incid = # NP / 1000 intubation days (before 1st NP); IUR=Intubation Utilization Rate, intubation days / 1000 patientdays



Table 34: Bloodstream Infection and Antibiotic Use

	pats <sup>a</sup>				patdays <sup>a</sup>				NB <sup>a</sup>										CAB <sup>a</sup>										
	# <sup>b</sup>		% <sup>b</sup>		# <sup>b</sup>		% <sup>b</sup>		# <sup>b</sup>		% <sup>b</sup>		# <sup>b</sup>		% <sup>b</sup>		# <sup>b</sup>		% <sup>b</sup>		# <sup>b</sup>		% <sup>b</sup>						
	agg	agg	agg	agg	agg	agg	agg	agg	agg	agg	agg	agg	agg	agg	agg	agg	agg	agg	agg	agg	agg	agg	agg	agg					
<b>total Antibiotic Use days</b>	agg	agg	agg	agg	p10	p25	p50	p75	p90	agg	p10	p25	p50	p75	p90	agg	p10	p25	p50	p75	p90	agg	p10	p25	p50	p75	p90		
0	323	11.2	2201	10.5	1	0.3	0.0	0.0	0.4	0.4	0.5	0.0	0.0	0.6	0.6	1	0.8	0.0	0.0	0.0	1.0	1.0	0.8	0.0	0.0	0.0	1.0	1.0	
1	23	0.8	134	0.6	1	4.3	0.0	0.0	12.5	7.5	7.5	0.0	0.0	24.4	24.4	1	12.3	0.0	0.0	0.0	62.5	62.5	12.3	0.0	0.0	0.0	62.5	62.5	
2/3	88	3.0	369	1.8	0	0.0	0.0	0.0	0.0	0.0	0.0	0.0	0.0	0.0	0.0	0	0.0	0.0	0.0	0.0	0.0	0.0	0.0	0.0	0.0	0.0	0.0	0.0	
4/6	168	5.8	951	4.5	1	0.6	0.0	0.0	3.1	3.1	1.1	0.0	0.0	5.7	5.7	1	1.7	0.0	0.0	0.0	12.2	12.2	1.7	0.0	0.0	0.0	12.2	12.2	
>=7	261	9.0	3427	16.3	5	1.9	0.8	0.8	8.3	8.3	1.5	0.6	0.7	7.2	7.2	4	1.4	0.0	0.0	0.8	10.3	10.3	1.4	0.0	0.0	0.8	10.3	10.3	
<b>SDD Antibiotic Use days</b>	agg	agg	agg	agg	p10	p25	p50	p75	p90	agg	p10	p25	p50	p75	p90	agg	p10	p25	p50	p75	p90	agg	p10	p25	p50	p75	p90		
0	863	29.9	7082	33.8	8	0.9	0.4	0.4	4.4	4.4	1.1	0.4	0.5	5.9	5.9	7	1.4	0.4	0.4	0.6	11.1	11.1	1.4	0.4	0.4	0.6	11.1	11.1	
1	0	0.0	0	0.0	0	0.0	0.0	0.0	0.0	0.0	0.0	0.0	0.0	0.0	0.0	0	0.0	0.0	0.0	0.0	0.0	0.0	0.0	0.0	0.0	0.0	0.0	0.0	0.0
2/3	0	0.0	0	0.0	0	0.0	0.0	0.0	0.0	0.0	0.0	0.0	0.0	0.0	0.0	0	0.0	0.0	0.0	0.0	0.0	0.0	0.0	0.0	0.0	0.0	0.0	0.0	0.0
4/6	0	0.0	0	0.0	0	0.0	0.0	0.0	0.0	0.0	0.0	0.0	0.0	0.0	0.0	0	0.0	0.0	0.0	0.0	0.0	0.0	0.0	0.0	0.0	0.0	0.0	0.0	0.0
>=7	0	0.0	0	0.0	0	0.0	0.0	0.0	0.0	0.0	0.0	0.0	0.0	0.0	0.0	0	0.0	0.0	0.0	0.0	0.0	0.0	0.0	0.0	0.0	0.0	0.0	0.0	0.0
<b>Profylactic Antibiotic Use days</b>	agg	agg	agg	agg	p10	p25	p50	p75	p90	agg	p10	p25	p50	p75	p90	agg	p10	p25	p50	p75	p90	agg	p10	p25	p50	p75	p90		
0	798	27.6	6577	31.4	5	0.6	0.4	0.4	2.0	2.0	0.8	0.5	0.5	2.8	2.8	4	0.9	0.4	0.4	0.6	5.6	5.6	0.9	0.4	0.4	0.6	5.6	5.6	
1	24	0.8	179	0.9	1	4.2	0.0	0.0	12.5	12.5	5.6	0.0	0.0	22.7	22.7	1	8.1	0.0	0.0	0.0	45.5	45.5	8.1	0.0	0.0	0.0	45.5	45.5	
2/3	18	0.6	85	0.4	0	0.0	0.0	0.0	0.0	0.0	0.0	0.0	0.0	0.0	0.0	0	0.0	0.0	0.0	0.0	0.0	0.0	0.0	0.0	0.0	0.0	0.0	0.0	0.0
4/6	15	0.5	115	0.5	0	0.0	0.0	0.0	0.0	0.0	0.0	0.0	0.0	0.0	0.0	0	0.0	0.0	0.0	0.0	0.0	0.0	0.0	0.0	0.0	0.0	0.0	0.0	0.0
>=7	8	0.3	126	0.6	2	25.0	0.0	0.0	100.0	100.0	15.9	0.0	0.0	31.3	31.3	2	20.2	0.0	0.0	16.1	32.3	32.3	20.2	0.0	0.0	16.1	32.3	32.3	
<b>Empirical Antibiotic Use days</b>	agg	agg	agg	agg	p10	p25	p50	p75	p90	agg	p10	p25	p50	p75	p90	agg	p10	p25	p50	p75	p90	agg	p10	p25	p50	p75	p90		
0	408	14.1	2795	13.3	3	0.7	0.0	0.0	4.5	4.5	1.1	0.0	0.5	7.1	7.1	3	1.9	0.0	0.0	0.8	18.2	18.2	1.9	0.0	0.0	0.8	18.2	18.2	
1	21	0.7	210	1.0	1	4.8	0.0	0.0	25.0	25.0	4.8	0.0	0.0	12.2	12.2	1	6.2	0.0	0.0	0.0	13.3	13.3	6.2	0.0	0.0	0.0	13.3	13.3	
2/3	106	3.7	632	3.0	2	1.9	0.0	0.0	11.1	11.1	3.2	0.0	0.0	14.1	14.1	2	5.2	0.0	0.0	0.0	22.2	22.2	5.2	0.0	0.0	0.0	22.2	22.2	
4/6	145	5.0	900	4.3	0	0.0	0.0	0.0	0.0	0.0	0.0	0.0	0.0	0.0	0.0	0	0.0	0.0	0.0	0.0	0.0	0.0	0.0	0.0	0.0	0.0	0.0	0.0	0.0
>=7	183	6.3	2545	12.1	2	1.1	0.0	0.0	5.3	5.3	0.8	0.0	1.0	4.5	4.5	1	0.5	0.0	0.0	0.0	6.8	6.8	0.5	0.0	0.0	0.0	6.8	6.8	

<sup>a</sup> pats=patients patdays=patient days NB=Nosocomial Bacteremia; CAB=Catheter Associated NB

<sup>b</sup> #=#crude number; pats/patdays %=percentage of total pats/patdays; NB %=# NB /100 patients; NB incid = # NB / 1000 patientdays; CAB incid = # NP / 1000 Catheter days (before 1st NB);



Table 35: Standardized Pneumonia and Bacteremia Rates

	Expected <sup>a</sup>	Observed/Expected <sup>a</sup>					
	agg	agg	p10	p25	p50	p75	p90
Nosocomial Bacteremia	10.00	1.00	0.00	0.00	0.21	1.73	2.54
Nosocomial Pneumonia	9.00	1.00	0.00	0.19	0.71	2.93	3.02

<sup>a</sup> Expected=number of infection as predicted by risk factors for Pneumonia and Bacteremia Observed/Expected=number of observed infections divided by expected number of infections



Table 36: Nosocomial Pneumonia and Bacteremia risk score distribution

	pats <sup>a</sup>						patdays <sup>a</sup>						NP,NB <sup>a</sup>						IAP,CAB <sup>a</sup>																
	# <sup>b</sup>		% <sup>b</sup>		# <sup>b</sup>		% <sup>b</sup>		# <sup>b</sup>		% <sup>b</sup>		# <sup>b</sup>		% <sup>b</sup>		# <sup>b</sup>		% <sup>b</sup>		# <sup>b</sup>		% <sup>b</sup>												
	agg	agg	p10	p25	p50	p75	p90	agg	agg	p10	p25	p50	p75	p90	agg	agg	p10	p25	p50	p75	p90	agg	agg	p10	p25	p50	p75	p90							
<b>Nosocomial Pneumonia Risk Score</b>																																			
< 9	116	4.0	1014	4.8	0	0.0	0.0	0.0	0.0	0.0	0.0	0.0	0.0	0.0	0.0	0.0	0.0	0.0	0.0	0.0	0.0	0.0	0.0	0.0	0.0	0.0	0.0	0.0	0.0	0.0					
10/19	190	6.6	1339	6.4	0	0.0	0.0	0.0	0.0	0.0	0.0	0.0	0.0	0.0	0.0	0.0	0.0	0.0	0.0	0.0	0.0	0.0	0.0	0.0	0.0	0.0	0.0	0.0	0.0	0.0					
20/29	82	2.8	488	2.3	1	1.2	0.0	0.0	0.0	2.8	5.6	2.8	5.6	11.5	1	9.2	0.0	0.0	0.0	0.0	10.9	21.7	4.1	0.0	0.0	0.0	0.0	11.1	22.2	8.3	0.0	0.0			
30/39	42	1.5	425	2.0	1	2.4	0.0	0.0	0.0	10.0	20.0	2.4	4.1	15.4	1	4.1	0.0	0.0	0.0	0.0	11.1	22.2	4.1	0.0	0.0	0.0	0.0	10.2	21.8	23.3	8.3	0.0	0.0		
40/49	33	1.1	373	1.8	4	12.1	0.0	0.0	0.0	10.0	40.0	10.7	10.7	36.6	2	8.3	0.0	0.0	0.0	0.0	11.1	22.2	4.1	0.0	0.0	0.0	0.0	10.2	21.8	23.3	8.3	0.0	0.0		
50/59	20	0.7	157	0.7	0	0.0	0.0	0.0	0.0	0.0	0.0	0.0	0.0	0.0	0	0.0	0.0	0.0	0.0	0.0	0.0	0.0	0.0	0.0	0.0	0.0	0.0	0.0	0.0	0.0	0.0	0.0	0.0		
≥ 60	22	0.8	717	3.4	3	13.6	6.7	6.7	25.0	33.3	33.3	4.2	4.2	20.8	2	3.9	0.0	0.0	0.0	0.0	5.7	30.3	3.9	0.0	0.0	0.0	0.0	5.7	30.3	30.3	3.9	0.0	0.0	0.0	
<b>Nosocomial Bacteremia Risk Score</b>																																			
< 9	200	6.9	1254	6.0	1	0.5	0.0	0.0	0.0	1.0	2.0	0.8	0.8	3.9	1	2.2	0.0	0.0	0.0	16.7	33.3	2.2	0.0	0.0	0.0	0.0	0.0	0.0	0.0	0.0	0.0	0.0	0.0	0.0	
10/19	127	4.4	829	4.0	0	0.0	0.0	0.0	0.0	0.0	0.0	0.0	0.0	0.0	0	0.0	0.0	0.0	0.0	0.0	0.0	0.0	0.0	0.0	0.0	0.0	0.0	0.0	0.0	0.0	0.0	0.0	0.0	0.0	
20/29	58	2.0	498	2.4	1	1.7	0.0	0.0	0.0	7.1	14.3	2.0	2.0	9.9	0	0.0	0.0	0.0	0.0	0.0	0.0	0.0	0.0	0.0	0.0	0.0	0.0	0.0	0.0	0.0	0.0	0.0	0.0	0.0	0.0
30/39	57	2.0	790	3.8	1	1.8	0.0	0.0	0.0	6.3	12.5	1.3	1.3	10.4	1	1.4	0.0	0.0	0.0	0.0	0.0	0.0	0.0	0.0	0.0	0.0	0.0	0.0	0.0	0.0	0.0	0.0	0.0	0.0	0.0
40/49	57	2.0	1078	5.1	7	12.3	0.0	1.6	9.9	28.3	40.0	6.5	6.5	13.7	6	5.9	0.0	0.0	0.0	6.1	11.8	5.9	0.0	0.0	0.0	0.0	0.0	6.1	11.8	13.2	5.9	0.0	0.0	0.0	
≥ 50	4	0.1	30	0.1	0	0.0	0.0	0.0	0.0	0.0	0.0	0.0	0.0	0.0	0	0.0	0.0	0.0	0.0	0.0	0.0	0.0	0.0	0.0	0.0	0.0	0.0	0.0	0.0	0.0	0.0	0.0	0.0	0.0	
0	0	0.0	0	0.0	0	0.0	0.0	0.0	0.0	0.0	0.0	0.0	0.0	0.0	0	0.0	0.0	0.0	0.0	0.0	0.0	0.0	0.0	0.0	0.0	0.0	0.0	0.0	0.0	0.0	0.0	0.0	0.0	0.0	

<sup>a</sup> pats=patients patdays=patient days NP=Nosocomial Pneumonia; NB=Nosocomial Bacteremia; IAP=Intubation Associated NP; CAB=Catheter Associated NB  
<sup>b</sup> #=#crude number; pats/patdays %=percentage of total pats/patdays; NP %= # NP/100 patients; NP incid = # NP/1000 patientdays; IAP incid = # NP/1000 intubation days (before 1st NP); NB %= # NB/100 patients; NB incid = # NB/1000 catheter days (before 1st NB);

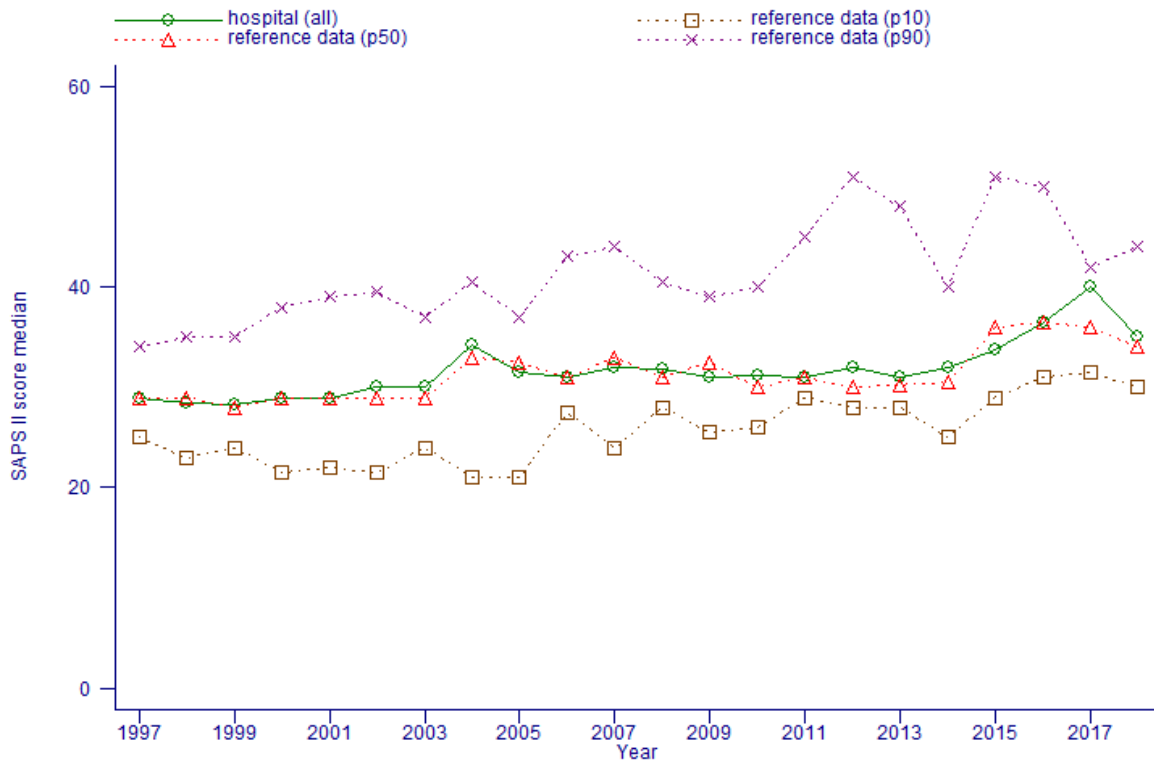


Figure 1: Evolution: SAPS II Score Median

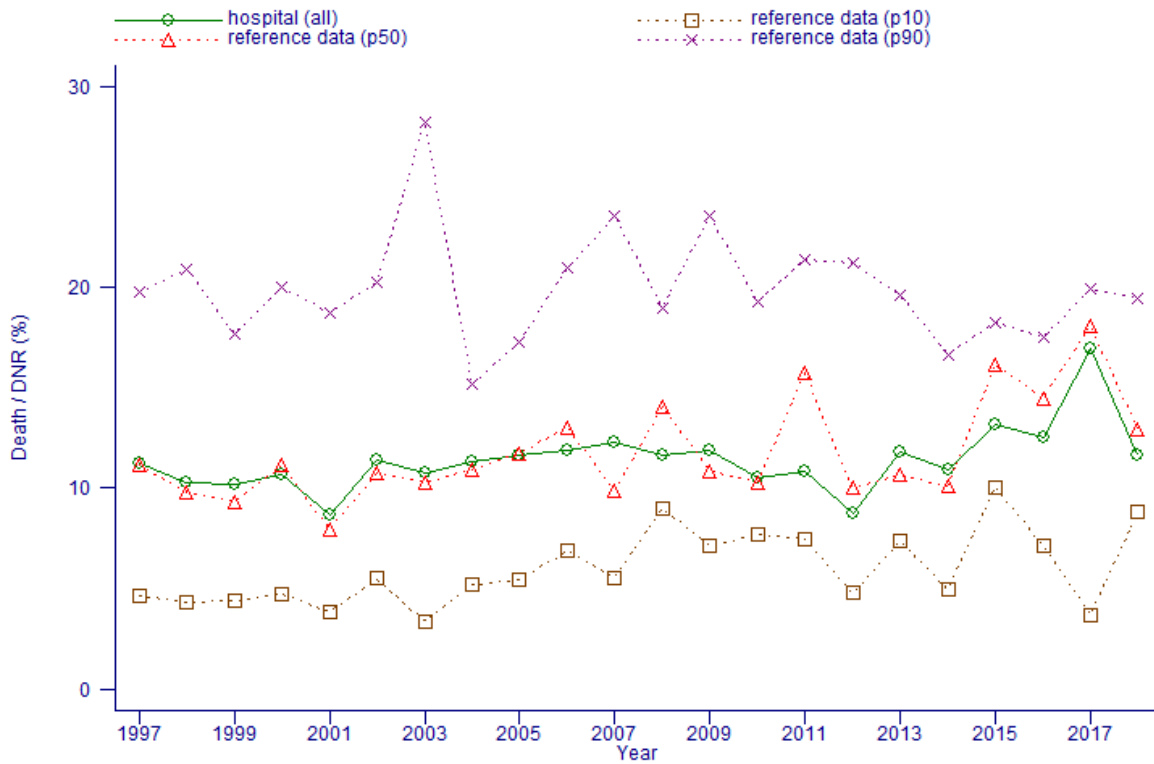


Figure 2: Evolution: Death / DNR (%)

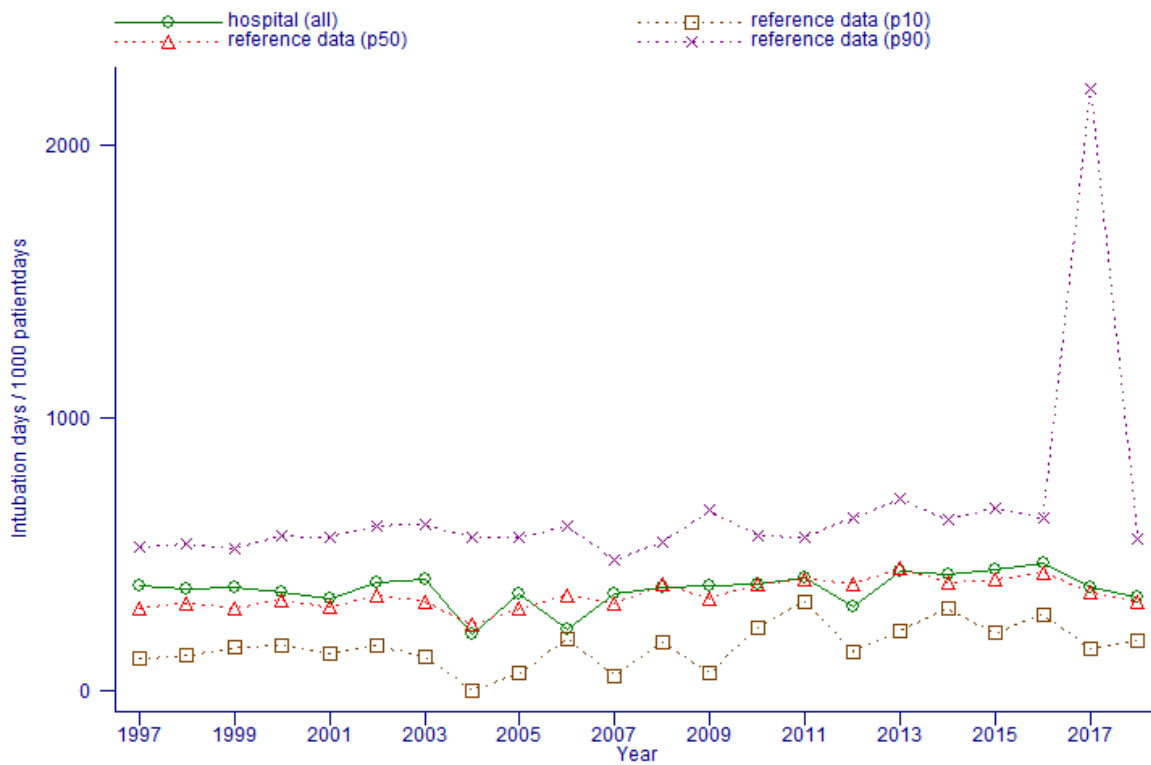


Figure 3: Evolution: Intubation days / 1000 patientdays

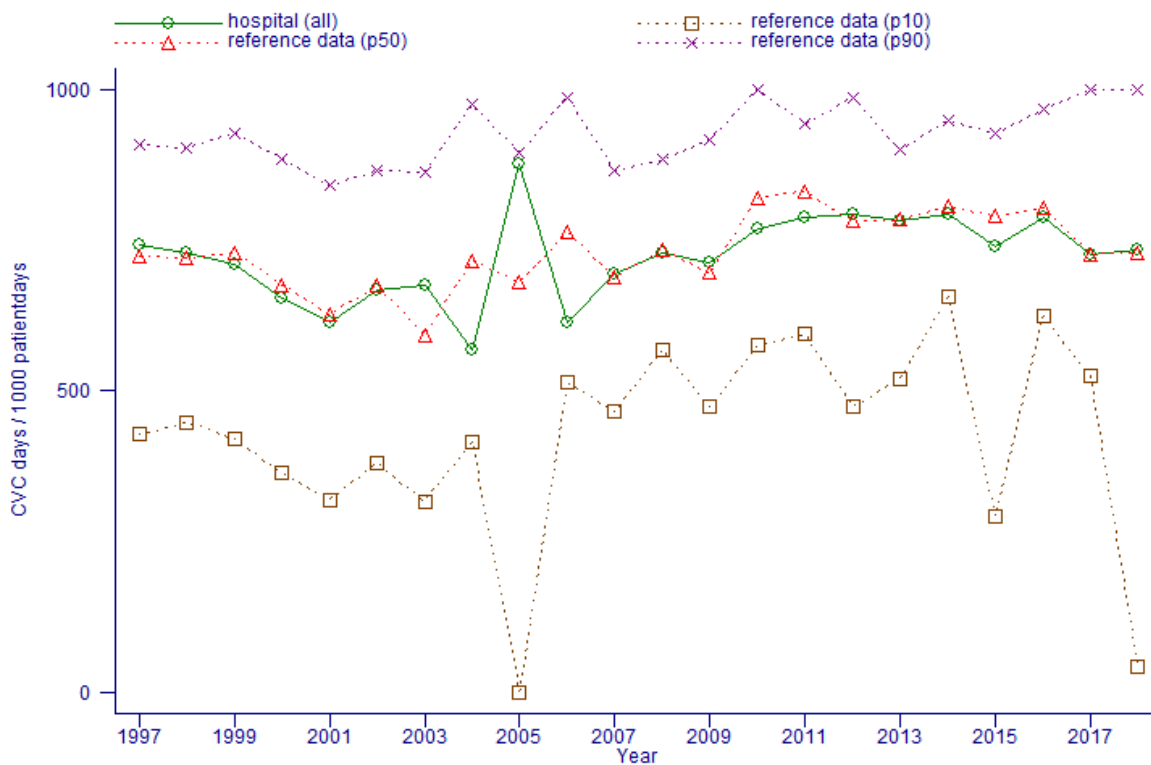


Figure 4: Evolution: CVC days / 1000 patientdays

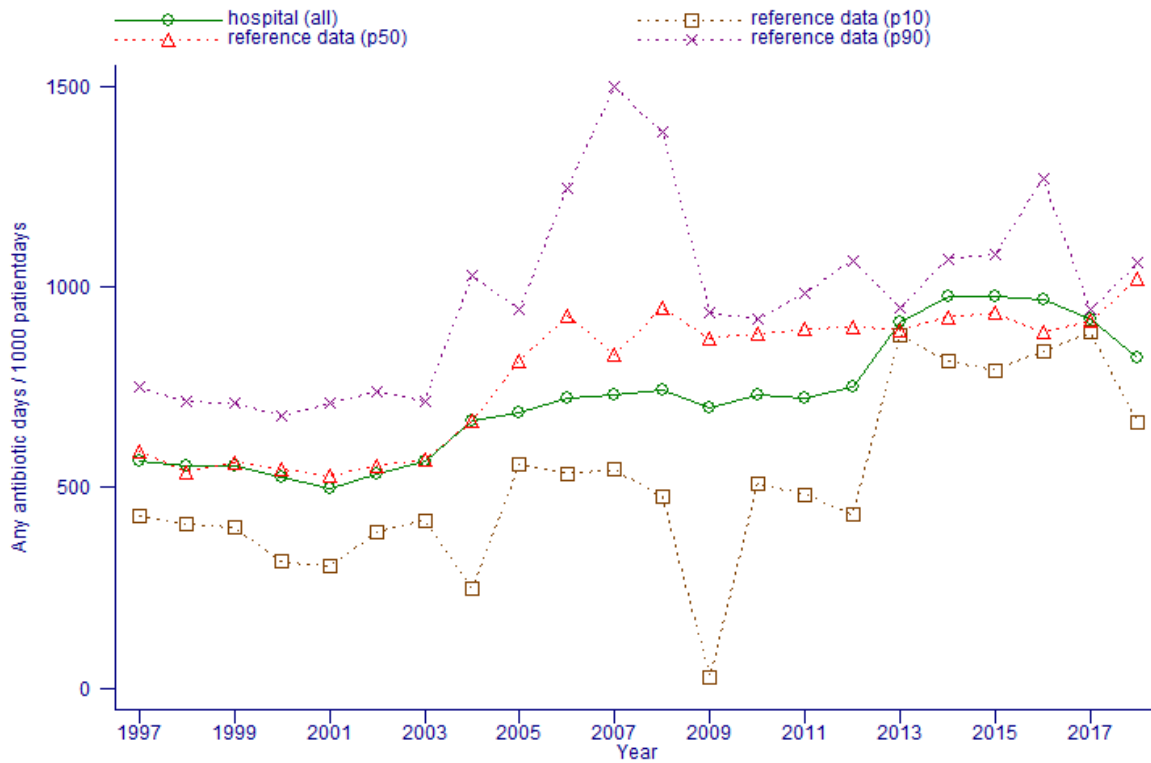


Figure 5: Evolution: Any AB utilization days / 1000 patientdays

Hospital (all) :  
1.00 observed NP/expected NP

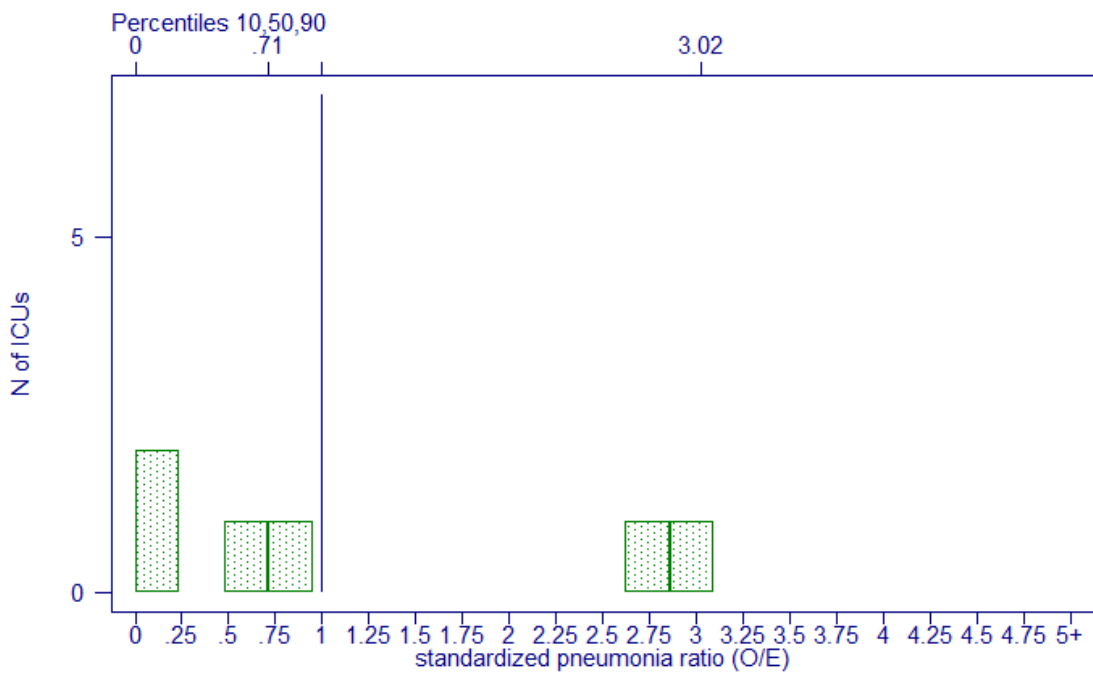


Figure 6: Benchmark: Standardized Pneumonia Ratio



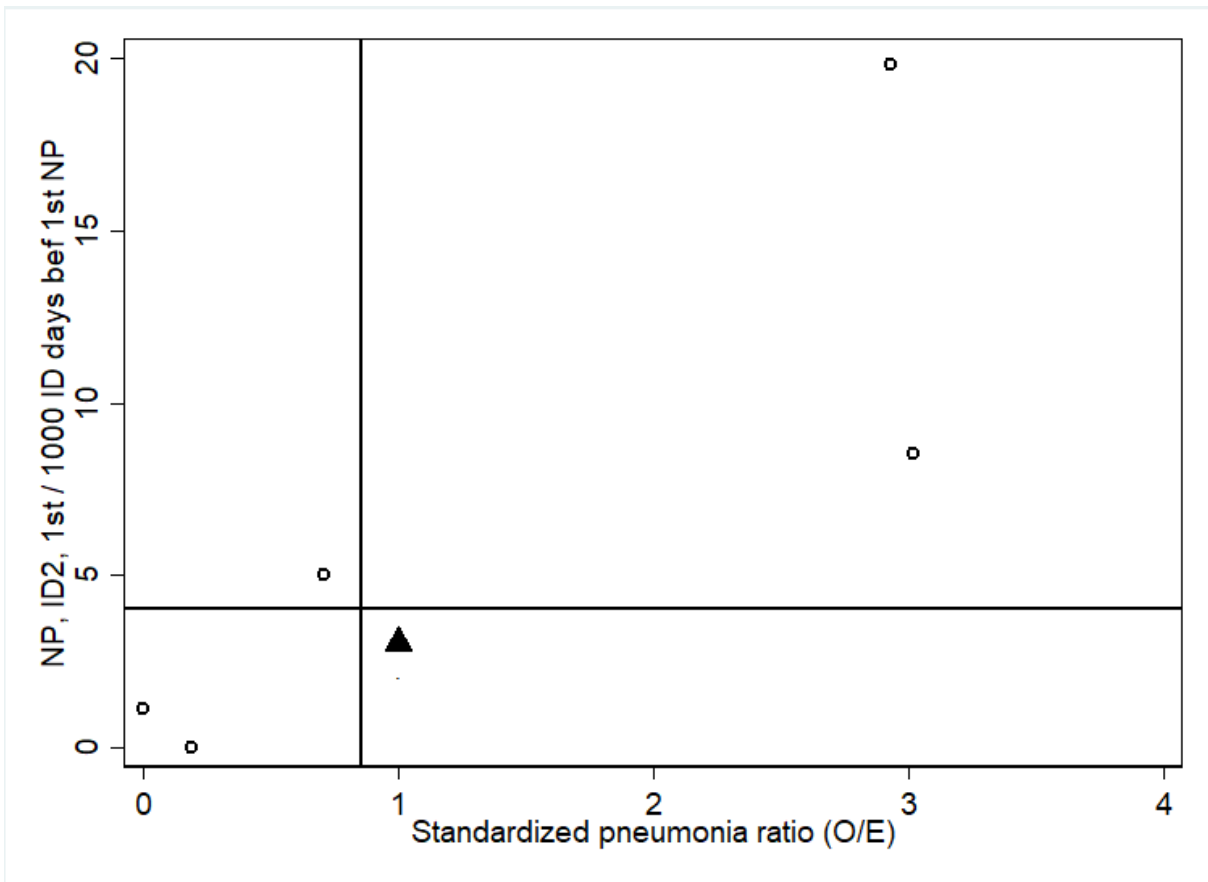


Figure 7: Benchmark: Ventilator Associated Pneumonia versus Standardized Pneumonia Ratio

Hospital (all) :  
1.00 observed NB/expected NB

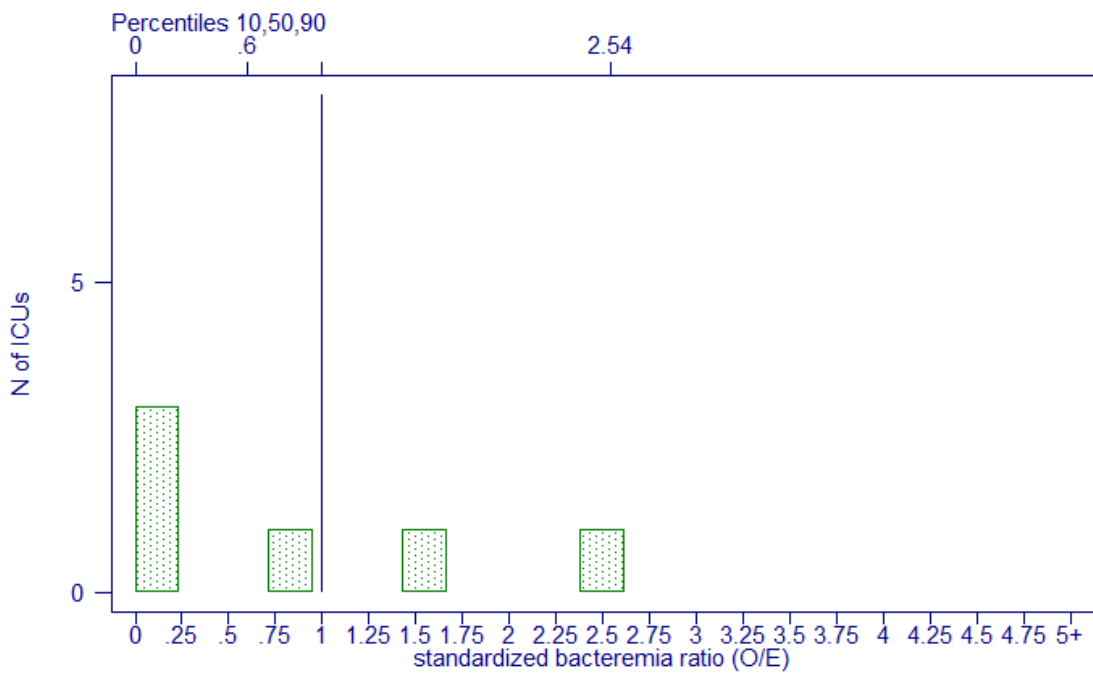


Figure 8: Benchmark: Standardized Bacteremia Ratio

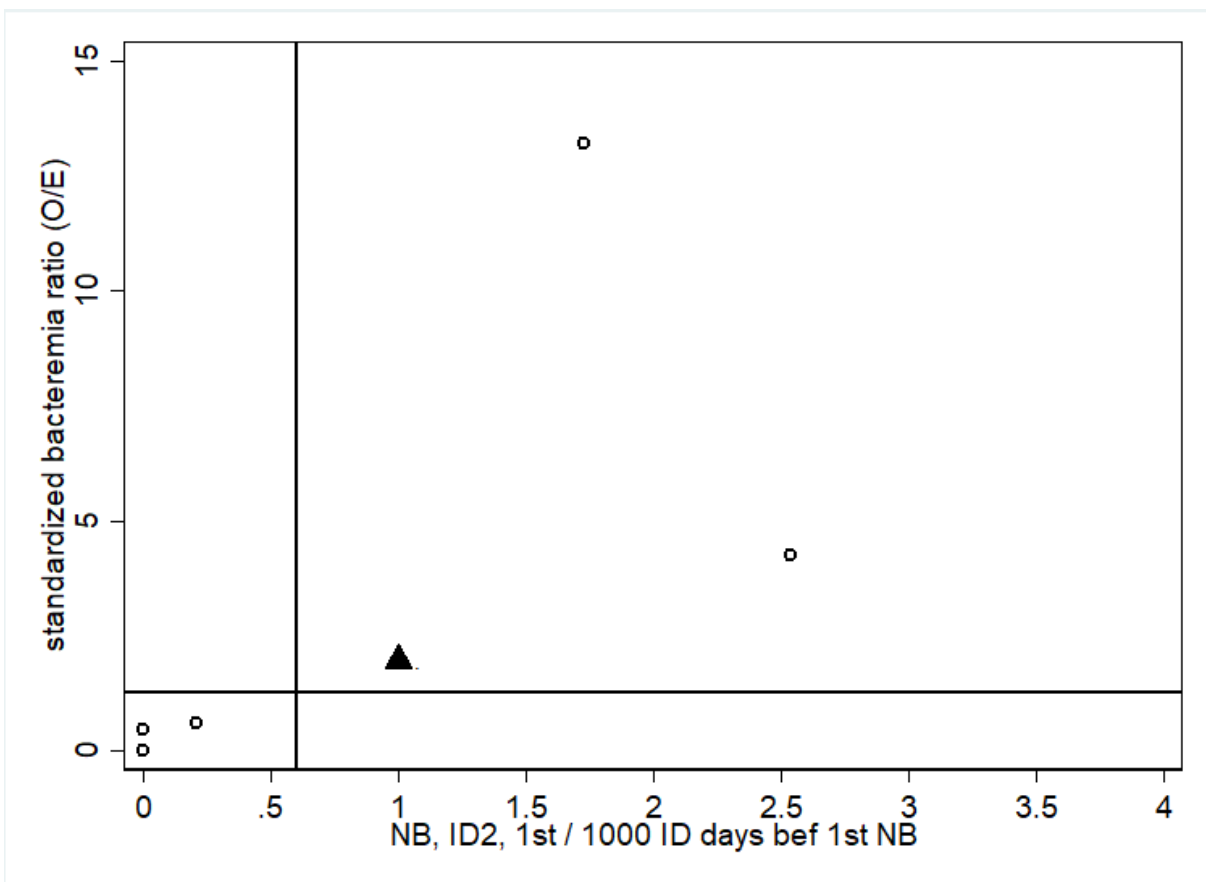


Figure 9: Benchmark: Catheter Associated Bacteremia versus Standardized Bacteremia Ratio