



WETENSCHAPPELIJK INSTITUUT
VOLKSGEZONDHEID
INSTITUT SCIENTIFIQUE
DE SANTÉ PUBLIQUE

Surveillance of ICU - Acquired Infections

National Feedback Report

Infection Indicators

Year 2018

Scientific Institute of Public Health
Direction of Public Health and Surveillance
National Surveillance of Hospital Infections (NSIH program)

14, Juliette Wytsmanstraat
1050 Brussels - Belgium
<http://www.wiv-isp.be>
<http://www.nsih.be>

Het project wordt financieel ondersteund door
KB van 19 juni 2007 betreffende de vaststelling en de vereffening van het budget van financiële middelen van de ziekenhuizen

Le projet est financièrement soutenu par
AR du 19 juin 2007 relatif à la fixation et à la liquidation du budget des moyens financiers des hôpitaux

Further information on this report:
Mr. Karl Mertens
Tel +32 2 642 5795
karl.mertens@wiv-isp.be



List of Tables

1	Participation	2
2	General Indicators	2
3	Pneumonia	3
4	Bloodstream Infections	4
5	Urinary Tract Infections	5
6	Catheter Related Infections	6
7	Case Definitions: Nosocomial Pneumonia	7
8	Case Definitions: Nosocomial Bloodstream Infections	7
9	Case Definitions: Nosocomial Urinary Tract Infections	7
10	Case Definitions: Nosocomial Catheter Related Infections	8
11	All reported micro-organisms (nosocomial infections) (a)	8
12	All reported micro-organisms (nosocomial infections) (b)	9
13	Anti Microbial Resistance Indicators I: Gram Positive Cocci	10
14	Anti Microbial Resistance Indicators II: Enterobacteriaceae (a)	11
15	Anti Microbial Resistance Indicators III: Enterobacteriaceae (b)	12
16	Anti Microbial Resistance Indicators IV: Nonfermentative Bacilli	13
17	Missing Infection variables	14

List of Figures

1	Distribution: number of patients	15
2	Distribution: mean length of stay	15
3	Distribution: $P \geq D3$ (NP) / 1000 patientdays	16
4	Distribution: NPs, ID2, all / 1000 IDdays ; NPs, with intubation in 2 days before onset of NP, all episodes / 1000 intubation days	16
5	Distribution: NPs, ID2, 1st / 1000 IDdays bef 1st NP ; NPs, 1st episode only, with intubation in 2 days before onset of NP / 1000 intubation days	17
6	Distribution: $Bs \geq D3$ (NBs) / 1000 patientdays	18
7	Distribution: NBs, with catheter use in 2days preceding onset of infection, all / 1000 IDdays ; NBs, with catheter use in 2days preceding onset of infection, all episodes / 1000 catheterdays	18
8	Distribution: NBs, ori=cat/unk / 1000 patientdays ; primary NBs / 1000 patientdays	19
9	Distribution: NBs, (ori=cat/un,ID2) OR (ori=cat) / 1000 IDdays ; catheter associated NBs / 1000 catheterdays (CDC)	19
10	Distribution: NBs, ori=cat, 1st / 1000 IDdays bef 1st NB ; definite catheter associated NBs, 1st episodes only / 1000 catheterdays	20
11	Distribution: $Us \geq D3$ (NU) / 1000 patientdays ; NUs / 1000 patientdays	21
12	Distribution: NUs, ID2 / 1000 ID days ; catheter associated NUs / 1000 urinary catheterdays	21
13	Evolution: Number of patients	22
14	Evolution: Mean Length of stay	22
15	Evolution: $P \geq D3$ (NP) / 1000 patientdays	23
16	Evolution: NPs, ID2, all / 1000 IDdays ; NPs, with intubation in 2 days before onset of NP, all episodes / 1000 intubation days	23
17	Evolution: NPs, ID2, 1st / 1000 IDdays bef 1st NP ; NPs, with intubation in 2 days before onset of NP, 1st episode only / 1000 intubation days	24
18	Evolution: $Bs \geq D3$ (NBs) / 1000 patientdays	25
19	Evolution: NBs, ID2, all / 1000 IDdays ; NBs, with catheter use in 2days preceding onset of infection, all episodes / 1000 catheterdays	25
20	Evolution: NBs, ID2, 1st / 1000 IDdays bef 1st CAB; NBs, with catheter use in 2days preceding onset of infection, 1st episodes only / 1000 catheterdays	26
21	Evolution: NBs, ori=cat, 1st / 1000 IDdays bef 1st NB ; definite catheter associated NBs, 1st episodes only / 1000 catheterdays	26
22	Evolution: NBs, (ori=cat/un,ID2) OR (ori=cat) / 1000 IDdays ; catheter associated NBs / 1000 catheterdays (CDC)	27
23	Evolution: NBs, ori=cat/unk / 1000 patientdays ; primary NBs / 1000 patientdays	27
24	Evolution: $Us \geq D3$ (NU) / 1000 patientdays ; NUs / 1000 patientdays	28
25	Evolution: NUs, ID2 / 1000 ID days ; catheter associated NUs / 1000 urinary catheterdays	28



Table 1: Participation

	#
unit quarters	27
hospital quarters	24
unit years	13
hospital years	10
level 1	16
level 2 basic	11
level 2a (risk factors / invasive devices)	11
level 2b (cvc utilization)	6
level 2c (antibiotic utilization)	9
Pneumonia	27
Bloodstream infections	27
Urinary tract infections	16
Catheter-related infections	19

^a unit quarters = number of IC units that participated during a particular 3-month quarter; hospital quarters = number of hospitals that participated during a particular 3-month quarter; unit years = number of IC units that participated during at least one 3-month quarter ; hospital years = number of hospitals that participated during at least one 3-month quarter

^b level = number of IC units that participated during a particular 3-month quarter; level 1 = unit-based surveillance; level 2 = patient-based surveillance

Table 2: General Indicators

	#					
	agg	p10	p25	p50	p75	p90
admissions, total	2888	68.5	102	192	217	862
patientdays, total	20965	459	842	1220.5	2285	5599.5
patientdays, mean	7.3	5.9	6.1	7.4	10	11.3
patientdays, median	5	4	5	5	5	7



Table 3: Pneumonia

	# ^a		rate ^a						
	agg.	agg.	p10	p25	p50	p75	p90		
patients with P (all)	61	2.11	0.72	1.53	2.08	4.27	5.39	/100 admissions	
patients with P ≥ D3 ^b (NP ^b)	58	2.01	0.51	0.88	1.96	4.27	5.39	/100 admissions	
patients with NP, ID2 ^b	42	1.45	0.00	0.19	1.56	2.33	3.60	/100 admissions	
P (all)	65	3.10	0.97	1.33	3.25	4.91	8.43	/1000 patientdays	
P ≥ D3 (NP)	62	2.96	0.60	1.19	3.25	4.91	8.43	/1000 patientdays	
NP, 1st ^b	58	2.77	0.60	1.19	3.23	4.91	7.20	/1000 patientdays	
NP, ID2	38	6.39	0.00	0.37	4.62	12.28	21.90	/1000 IDdays ^b	
NP, ID2, 1st	7	3.04	0.00	1.15	5.00	8.55	19.80	/1000 IDdays bef 1st NP	

^a # = total; rate = # divided by indicated denominator; agg. = aggregated over all participating units; p10-90 = percentiles for distribution of participating units

^b P = pneumonia, NP(s) = Nosocomial P, ≥ D3 = occurring after D2 (nosocomial), IDdays = Invasive Device (intubation for P) exposure days, ID2 = Invasive Device (intubation for P) exposure in 2 days before onset of NP, 1st = only 1st infection per patient



Table 4: Bloodstream Infections

	# ^a										rate ^a		
	agg.	agg.	p10	p25	p50	p75	p90						
patients with B (all)	45	1.56	0.19	0.46	1.48	2.13	5.15						
patients with B \geq D3 ^b (NB ^b)	45	1.56	0.19	0.46	1.48	2.13	5.15						/100 admissions
patients with NB, ID2 ^b	34	1.18	0.09	0.46	0.97	2.13	3.68						/100 admissions
B (all)	47	2.24	0.25	0.78	1.75	3.31	5.91						/1000 patientdays
B \geq D3 (NBs)	47	2.24	0.25	0.78	1.75	3.31	5.91						/1000 patientdays
NB, 1st ^b	44	2.10	0.22	0.51	1.75	3.04	5.91						/1000 patientdays
NB, ID2	31	2.27	0.00	0.85	3.33	3.79	58.82						/1000 IDdays ^b
NB, ID2, 1st	10	1.96	0.00	0.47	0.61	4.26	13.19						/1000 IDdays bef 1st NB
NB, ori=cat/unk ^{b,c}	24	1.14	0.00	0.00	0.00	2.21	4.17						/1000 patientdays
NB, (ori=cat/unk, ID2)/(ori=cat) ^d	17	1.25	0.00	0.00	0.00	2.46	58.82						/1000 IDdays
NB, ori=cat ^e	7	0.51	0.00	0.00	0.00	0.76	58.82						/1000 IDdays
NB, ori=unk	17	0.81	0.00	0.00	0.00	0.00	3.28						/1000 patientdays
NB, ori=cat or unk, 1st	22	1.05	0.00	0.00	0.00	1.93	4.17						/1000 patientdays
NB, (ori=cat or unk, ID2)/(ori=cat), 1st	4	0.79	0.00	0.00	0.00	0.00	5.67						/1000 IDdays bef 1st NB
NB, ori=cat, 1st	1	0.20	0.00	0.00	0.00	0.00	1.42						/1000 IDdays bef 1st NB
NB, ori=unk, 1st	15	0.72	0.00	0.00	0.00	0.00	3.14						/1000 patientdays
NBs, ID2, \geq 1HC path or \geq 2HCs with sc ^b	10	1.96	0.00	0.47	0.61	4.26	13.19						/1000 IDdays bef 1st NB
NBs, ID2, \geq 1HC path or \geq 2HCs with sc, ori=cat	0	0.00	0.00	0.00	0.00	0.00	0.00						/1000 IDdays bef 1st NB
NBs, ID2, \geq 1HC path or \geq 2HCs with sc, ori=cat, 1st	0	0.00	0.00	0.00	0.00	0.00	0.00						/1000 IDdays bef 1st NB

^a #=total; rate=# divided by indicated denominator; agg.=aggregated over all participating units; p10-90=percentiles for distribution of participating units

^b B=Bloodstream Infection episodes; NB(s)=Nosocomial B; \geq D3=occurring after D2 (nosocomial); IDdays=Invasive Device (central vascular catheter for B) days; ID2=Invasive Device (central vascular catheter for B) in 2 days before onset of B; 1st=only 1st infection per patient; ori=cat/unk=NB origin is either catheter or unknown; ori=cat=NB origin is catheter; \geq 1HC path=at least one hemoculture from a pathogen; \geq 2HCs with sc=at least 2 hemocultures from a skincontaminant

^c Primary BSI

^d Catheter Associated Primary BSI

^e Definite Catheter Associated Primary BSI



Table 5: Urinary Tract Infections

	# ^a		rate ^a						
	agg.	agg.	p10	p25	p50	p75	p90		
patients with U (all)	27	2.43	0.00	0.00	0.51	1.38	4.32	/100 admissions	
patients with U \geq D3 (NU) ^b	24	2.16	0.00	0.00	0.51	0.92	3.94	/100 admissions	
patients with NU, ID2 ^b	14	1.26	0.00	0.00	0.51	0.92	2.06	/100 admissions	
U (all)	37	4.28	0.00	0.00	0.86	1.75	8.09	/1000 patientdays	
U \geq D3 (NU)	34	3.93	0.00	0.00	0.86	1.31	7.59	/1000 patientdays	
NU, 1st ^b	24	2.77	0.00	0.00	0.86	0.88	5.31	/1000 patientdays	
NU, ID2	16	2.66	0.00	0.00	1.43	3.86	3.86	/1000 ID days before 1st NU	
NU, ID2, 1st	13	2.05	0.00	0.00	1.03	3.72	3.72	/1000 ID days before 1st NU	

^a #=total; rate=# divided by indicated denominator; agg.=aggregated over all participating units; p10-90=percentiles for distribution of participating units

^b U=Urinary Tract Infection; NU=Nosocomial U; \geq D3=occurring after D2 (nosocomial); IDdays=Invasive Device (urinary catheter for U) days; ID2=Invasive Device (urinary catheter for U) in 2 days before onset of U; 1st=only 1st infection per patient



Table 6: Catheter Related Infections

	# ^a		rate ^a						
	agg.	agg.	p10	p25	p50	p75	p90		
patients with CRI (all)	5	0.40	0.00	0.00	0.44	0.53	1.96	/100 admissions	
patients with CRI \geq D3 (NCRI) ^b	5	0.40	0.00	0.00	0.44	0.53	1.96	/100 admissions	
CRI (all)	5	0.47	0.00	0.00	0.47	0.86	2.46	/1000 patientdays	
CRI \geq D3 (NCRI)	5	0.47	0.00	0.00	0.47	0.86	2.46	/1000 patientdays	
NCRI, 1st ^b	5	0.47	0.00	0.00	0.47	0.86	2.46	/1000 patientdays	

^a # =total; rate=# divided by indicated denominator; agg.=aggregated over all participating units; p10-90=percentiles for distribution of participating units

^b U=Catheter Related Infection; NCRI=Nosocomial CRI; \geq D3=occurring after D2 (nosocomial); 1st=only 1st infection per patient



Table 7: Case Definitions: Nosocomial Pneumonia

	# ^a		% ^a				
	agg.	agg.	p10	p25	p50	p75	p90
PN1	8	12.9	0.0	0.0	0.0	0.0	61.3
PN2	11	17.7	0.0	0.0	0.0	50.0	72.2
PN3	0	0.0	0.0	0.0	0.0	0.0	0.0
PN4	42	67.7	0.0	22.2	88.7	100.0	100.0
PN5	1	1.6	0.0	0.0	0.0	0.0	16.7

^a#=crude number; %=percentage; agg.=aggregated, treating national sample as one unit; p10-90=percentiles for national distribution

^bPN=clinical definition for Nosocomial Pneumonia; PN1=PN and positive quantitative culture from minimally contaminated lower respiratory tract specimen; PN2=PN and positive quantitative culture from possibly contaminated lower respiratory tract specimen; PN3=PN and alternative microbiology methods; PN4=PN and positive sputum culture or non-quantitative LRT specimen culture; PN5=PN with no positive microbiology

Table 8: Case Definitions: Nosocomial Bloodstream Infections

	# ^a		% ^a				
	agg.	agg.	p10	p25	p50	p75	p90
BSI-A	40	85.1	0.0	0.0	100.0	100.0	100.0
BSI-B	2	4.3	0.0	0.0	0.0	0.0	50.0

^a#=crude number; %=percentage; agg.=aggregated, treating national sample as one unit; p10-90=percentiles for national distribution

^bBSI-A=positive blood culture for a recognised pathogen or clinical signs with 2 positive blood cultures for a common skin contaminant; BSI-B=clinical signs and positive blood culture with a skin contaminant or positive blood antigen test

Table 9: Case Definitions: Nosocomial Urinary Tract Infections

	# ^a		% ^a				
	aggregated	aggregated	p10	p25	p50	p75	p90
UTI-A	34	100.0	100.0	100.0	100.0	100.0	100.0
UTI-B	0	0.0	0.0	0.0	0.0	0.0	0.0
UTI-C	0	0.0	0.0	0.0	0.0	0.0	0.0

^a#=crude number; %=percentage; agg.=aggregated, treating national sample as one unit; p10-90=percentiles for national distribution

^bUTI-A=microbiologically confirmed symptomatic UTI; UTI-B=not microbiologically confirmed symptomatic UTI; UTI-C=asymptomatic bacteriuria



Table 10: Case Definitions: Nosocomial Catheter Related Infections

	# ^a		% ^a				
	aggregated	aggregated	p10	p25	p50	p75	p90
CRI1	2	40.0	0.0	0.0	0.0	50.0	100.0
CRI2	1	20.0	0.0	0.0	0.0	50.0	100.0
CRI3	2	40.0	0.0	0.0	50.0	100.0	100.0

^a#=crude number; %=percentage; agg.=aggregated, treating national sample as one unit; p10-90=percentiles for national distribution

^bCRI1=local CVC-related infection; CRI2=general CVC-related infection; CRI3=CVC-related BSI

Table 11: All reported micro-organisms (nosocomial infections) (a)

microorganism - family	code	NP ^a		NB ^a		NU ^a		tot ^a	
		# ^b	% ^b	#	%	#	%	#	%
Gram-positive cocci		14	16.9	26	47.3	5	14.3	47	26.4
<i>Enterococcus faecalis</i>	ENCFAE	0	0.0	6	10.9	4	11.4	10	5.6
<i>Enterococcus faecium</i>	ENCFAI	0	0.0	8	14.5	1	2.9	9	5.1
<i>Other coagulase-negative staphylococci (cns)</i>	STAOTH	1	1.2	1	1.8	0	0.0	2	1.1
<i>Staphylococcus aureus</i>	STAAUR	9	10.8	2	3.6	0	0.0	11	6.2
<i>Staphylococcus epidermidis</i>	STAEPI	0	0.0	4	7.3	0	0.0	6	3.4
<i>Staphylococcus haemolyticus</i>	STAHAE	0	0.0	1	1.8	0	0.0	1	0.6
<i>Streptococcus pneumoniae</i>	STRPNE	4	4.8	0	0.0	0	0.0	4	2.2
<i>Streptococcus sp., not specified</i>	STRNSP	0	0.0	1	1.8	0	0.0	1	0.6
<i>Streptococcus sp., other</i>	STROTH	0	0.0	3	5.5	0	0.0	3	1.7
Gram negative cocci		0	0.0	1	1.8	0	0.0	1	0.6
<i>Gram negative cocci, not specified</i>	GNCNSP	0	0.0	1	1.8	0	0.0	1	0.6
Gram-negative bacilli, enterobacteriaceae		36	43.4	17	30.9	21	60.0	76	42.7
<i>Citrobacter freundii</i>	CITFRE	0	0.0	0	0.0	0	0.0	0	0.0
<i>Citrobacter koseri (ex. diversus)</i>	CITDIV	0	0.0	1	1.8	1	2.9	2	1.1
<i>Citrobacter sp., not specified</i>	CITNSP	1	1.2	0	0.0	0	0.0	1	0.6
<i>Enterobacter aerogenes</i>	ENBAER	0	0.0	1	1.8	0	0.0	2	1.1
<i>Enterobacter cloacae</i>	ENBCLO	5	6.0	1	1.8	1	2.9	7	3.9
<i>Escherichia coli</i>	ESCCOL	12	14.5	2	3.6	12	34.3	27	15.2
<i>Hafnia species</i>	HAFSPP	1	1.2	0	0.0	0	0.0	1	0.6
<i>Klebsiella oxytoca</i>	KLEOXY	3	3.6	4	7.3	0	0.0	7	3.9
<i>Klebsiella pneumoniae</i>	KLEPNE	2	2.4	5	9.1	3	8.6	10	5.6
<i>Morganella species</i>	MOGSPP	1	1.2	0	0.0	1	2.9	2	1.1
<i>Proteus mirabilis</i>	PRTMIR	3	3.6	1	1.8	0	0.0	4	2.2
<i>Proteus sp., not specified</i>	PRTNSP	1	1.2	0	0.0	0	0.0	1	0.6
<i>Proteus vulgaris</i>	PRTVUL	0	0.0	0	0.0	0	0.0	0	0.0
<i>Serratia marcescens</i>	SERMAR	7	8.4	2	3.6	3	8.6	12	6.7

^a NP=Nosocomial Pneumonia, NB=Nosocomial Bloodstream Infection, NU=Nosocomial Urinary Tract Infection, tot=all Nosocomial Infections

^b#=number of micro-organisms, %=percentage of total micro-organisms



Table 12: All reported micro-organisms (nosocomial infections) (b)

microorganism - family	code	NP ^a		NB ^a		NU ^a		tot ^a	
		# ^b	% ^b	#	%	#	%	#	%
Gram-negative bacilli, other		26	31.3	4	7.3	4	11.4	35	19.7
<i>Acinetobacter baumannii</i>	ACIBAU	2	2.4	0	0.0	0	0.0	2	1.1
<i>Aeromonas species</i>	AEMSPP	1	1.2	0	0.0	0	0.0	1	0.6
<i>Haemophilus influenzae</i>	HAEINF	9	10.8	0	0.0	0	0.0	9	5.1
<i>Pseudomonadaceae family, other</i>	PSEOTH	0	0.0	0	0.0	1	2.9	1	0.6
<i>Pseudomonas aeruginosa</i>	PSEAER	10	12.0	2	3.6	3	8.6	15	8.4
<i>Stenotrophomonas maltophilia</i>	STEMAL	4	4.8	2	3.6	0	0.0	7	3.9
Anaerobes		0	0.0	2	3.6	0	0.0	2	1.1
<i>Clostridium other</i>	CLOOTH	0	0.0	1	1.8	0	0.0	1	0.6
<i>Prevotella species</i>	PRESPP	0	0.0	1	1.8	0	0.0	1	0.6
Parasites		3	3.6	5	9.1	5	14.3	13	7.3
<i>Aspergillus fumigatus</i>	ASPFUM	2	2.4	0	0.0	0	0.0	2	1.1
<i>Aspergillus sp., other</i>	ASPOTH	1	1.2	0	0.0	0	0.0	1	0.6
<i>Candida albicans</i>	CANALB	0	0.0	3	5.5	3	8.6	6	3.4
<i>Candida glabrata</i>	CANGLA	0	0.0	2	3.6	0	0.0	2	1.1
<i>Candida sp., other</i>	CANOTH	0	0.0	0	0.0	2	5.7	2	1.1
Virus		4	4.8	0	0.0	0	0.0	4	2.2
<i>Cytomegalovirus (cmv)</i>	VIRCMV	1	1.2	0	0.0	0	0.0	1	0.6
<i>Herpes simplex virus</i>	VIRHSV	1	1.2	0	0.0	0	0.0	1	0.6
<i>Respiratory syncytial virus (rsv)</i>	VIRRSV	2	2.4	0	0.0	0	0.0	2	1.1

^a NP=Nosocomial Pneumonia, NB=Nosocomial Bloodstream Infection, NU=Nosocomial Urinary Tract Infection, tot=all Nosocomial Infections

^b #=number of micro-organisms, %=percentage of total micro-organisms



Table 13: Anti Microbial Resistance Indicators I: Gram Positive Cocci

	SIR ^a					IR ^a								
	# ^a	% ^a	p10	p25	p50	p75	p90	# ^a	% ^a	p10	p25	p50	p75	p90
<i>Staphylococcus aureus</i>	11													
cultures	0	0.0	0.0	0.0	0.0	0.0	0.0	0	0.0	0.0	0.0	0.0	0.0	0.0
Fluoroquinolones: Ciprofloxacin/ofloxacin	0	0.0	0.0	0.0	0.0	0.0	0.0	0	0.0	0.0	0.0	0.0	0.0	0.0
Macrolides/sim.: Clindamycin (lincosamides)	0	0.0	0.0	0.0	0.0	0.0	0.0	0	0.0	0.0	0.0	0.0	0.0	0.0
Macrolides/sim.: Erythromycin (macrolides)	0	0.0	0.0	0.0	0.0	0.0	0.0	0	0.0	0.0	0.0	0.0	0.0	0.0
Other antibiotics: Fosfomycin	0	0.0	0.0	0.0	0.0	0.0	0.0	0	0.0	0.0	0.0	0.0	0.0	0.0
Other antibiotics: Fusidic acid	0	0.0	0.0	0.0	0.0	0.0	0.0	0	0.0	0.0	0.0	0.0	0.0	0.0
Aminoglycosides: Gentamycin	2	18.2	0.0	0.0	0.0	0.0	0.0	0	0.0	0.0	0.0	0.0	0.0	0.0
Glycopeptides: Vancomycin/teicoplanin (Glycopeptides)	2	18.2	0.0	0.0	0.0	100.0	100.0	0	0.0	0.0	0.0	0.0	0.0	0.0
Penicillins: Methicillin/Oxacillin (beta-lact.res.penic.)	8	72.7	0.0	100.0	100.0	100.0	100.0	0	0.0	0.0	0.0	0.0	0.0	0.0
Penicillins: Penicillin	0	0.0	0.0	0.0	0.0	0.0	0.0	0	0.0	0.0	0.0	0.0	0.0	0.0
<i>Streptococcus pneumoniae</i>	4													
cultures	2	50.0	0.0	0.0	33.3	66.7	66.7	0	0.0	0.0	0.0	0.0	0.0	0.0
Penicillins: Ampicillin	0	0.0	0.0	0.0	0.0	0.0	0.0	0	0.0	0.0	0.0	0.0	0.0	0.0
Cephalosporins: Cefotaxime/ceftriaxone (3rd gen cephalosp.)	0	0.0	0.0	0.0	0.0	0.0	0.0	0	0.0	0.0	0.0	0.0	0.0	0.0
Macrolides/sim.: Clindamycin (lincosamides)	0	0.0	0.0	0.0	0.0	0.0	0.0	0	0.0	0.0	0.0	0.0	0.0	0.0
Macrolides/sim.: Erythromycin (macrolides)	0	0.0	0.0	0.0	0.0	0.0	0.0	0	0.0	0.0	0.0	0.0	0.0	0.0
Penicillins: Methicillin/Oxacillin (beta-lact.res.penic.)	0	0.0	0.0	0.0	0.0	0.0	0.0	0	0.0	0.0	0.0	0.0	0.0	0.0
Penicillins: Penicillin	1	25.0	0.0	0.0	50.0	100.0	100.0	0	0.0	0.0	0.0	0.0	0.0	0.0
Tetracyclines: Tetra-/doxy-/minocycline (tetracyclines)	0	0.0	0.0	0.0	0.0	0.0	0.0	0	0.0	0.0	0.0	0.0	0.0	0.0
<i>Enterococcus faecalis</i>	10													
cultures	8	80.0	0.0	0.0	100.0	100.0	100.0	2	25.0	20.0	20.0	26.7	33.3	33.3
Penicillins: Ampicillin	6	60.0	0.0	0.0	33.3	100.0	100.0	2	33.3	20.0	20.0	60.0	100.0	100.0
Penicillins: Amoxicillin/clavulanate	8	80.0	0.0	0.0	100.0	100.0	100.0	4	50.0	40.0	40.0	53.3	66.7	66.7
Aminoglycosides: Gentamycin	6	60.0	0.0	0.0	33.3	100.0	100.0	1	16.7	0.0	0.0	10.0	20.0	20.0
Glycopeptides: Vancomycin/teicoplanin (Glycopeptides)														

^a SIR=all Sensitive/Intermediate/Resistant antibiogram results, IR=all Intermediate/Resistant antibiogram results, #=#/100 cultures (SIR) or #/100 SIR results (IR),



Table 14: Anti Microbial Resistance Indicators II: Enterobacteriaceae (a)

	SIR ^a										IR ^a			
	# ^a	% ^a	p10	p25	p50	p75	p90	# ^a	% ^a	p10	p25	p50	p75	p90
<i>Escherichia coli</i>														
cultures	27													
Penicillins: Amoxicillin/clavulanate	24	88.9	0.0	90.9	100.0	100.0	100.0	17	70.8	0.0	29.2	74.2	95.0	100.0
Cephalosporins: Cefotaxime/ceftriaxone (3rd gen cephalosp.)	17	63.0	0.0	27.3	100.0	100.0	100.0	4	23.5	0.0	4.2	37.5	83.3	100.0
Carbapenems: Meropenem/impipenem (carbapenems)	15	55.6	0.0	9.1	100.0	100.0	100.0	1	6.7	0.0	0.0	0.0	4.2	8.3
ESBL: Extended Spectrum Beta Lactamase	3	11.1	0.0	0.0	0.0	100.0	100.0	1	33.3	0.0	0.0	50.0	100.0	100.0
<i>Enterobacter aerogenes</i>														
cultures	2													
Penicillins: Amoxicillin/clavulanate	0	0.0	0.0	0.0	0.0	0.0	0.0							
Cephalosporins: Cefotaxime/ceftriaxone (3rd gen cephalosp.)	2	100.0	100.0	100.0	100.0	100.0	100.0	2	100.0	100.0	100.0	100.0	100.0	100.0
Carbapenems: Meropenem/impipenem (carbapenems)	2	100.0	100.0	100.0	100.0	100.0	100.0	0	0.0	0.0	0.0	0.0	0.0	0.0
ESBL: Extended Spectrum Beta Lactamase	0	0.0	0.0	0.0	0.0	0.0	0.0							
<i>Enterobacter cloacae</i>														
cultures	7													
Penicillins: Amoxicillin/clavulanate	6	85.7	0.0	0.0	100.0	100.0	100.0	6	100.0	100.0	100.0	100.0	100.0	100.0
Cephalosporins: Cefotaxime/ceftriaxone (3rd gen cephalosp.)	7	100.0	100.0	100.0	100.0	100.0	100.0	4	57.1	0.0	0.0	50.0	100.0	100.0
Carbapenems: Meropenem/impipenem (carbapenems)	3	42.9	0.0	0.0	100.0	100.0	100.0	0	0.0	0.0	0.0	0.0	0.0	0.0
ESBL: Extended Spectrum Beta Lactamase	0	0.0	0.0	0.0	0.0	0.0	0.0							

^a SIR=all Sensitive/Intermediate/Resistant antibiotic results, IR=all Intermediate/Resistant antibiotic results. #=#/100 cultures (SIR) or #/100 SIR results (IR),



Table 15: Anti Microbial Resistance Indicators III: Enterobacteriaceae (b)

	SIR ^a										IR ^a									
	# ^a	% ^a	p10	p25	p50	p75	p90	# ^a	% ^a	p10	p25	p50	p75	p90						
<i>Klebsiella pneumoniae</i>																				
cultures	10																			
Penicillins: Amoxicillin/clavulanate	7	70.0	0.0	50.0	100.0	100.0	100.0	1	14.3	0.0	0.0	0.0	100.0	100.0						
Cephalosporins: Cefotaxime/ceftriaxone (3rd gen cephalosp.)	4	40.0	0.0	12.5	62.5	100.0	100.0	1	25.0	0.0	0.0	0.0	100.0	100.0						
Carbapenems: Meropenem/impipenem (carbapenems)	4	40.0	0.0	12.5	62.5	100.0	100.0	1	25.0	0.0	0.0	0.0	100.0	100.0						
ESBL: Extended Spectrum Beta Lactamase	0	0.0	0.0	0.0	0.0	0.0	0.0													
<i>Klebsiella oxytoca</i>																				
cultures	7																			
Penicillins: Amoxicillin/clavulanate	6	85.7	0.0	0.0	100.0	100.0	100.0	3	50.0	50.0	50.0	50.0	50.0	50.0						
Cephalosporins: Cefotaxime/ceftriaxone (3rd gen cephalosp.)	4	57.1	0.0	0.0	50.0	100.0	100.0	2	50.0	0.0	0.0	50.0	100.0	100.0						
Carbapenems: Meropenem/impipenem (carbapenems)	3	42.9	0.0	0.0	25.0	100.0	100.0	0	0.0	0.0	0.0	0.0	0.0	0.0						
ESBL: Extended Spectrum Beta Lactamase	0	0.0	0.0	0.0	0.0	0.0	0.0													

^a SIR=all Sensitive/Intermediate/Resistant antibiotic results, IR=all Intermediate/Resistant antibiotic results, #=aggregated total, %=#/100 cultures (SIR) or #/100 SIR results (IR),



Table 16: Anti Microbial Resistance Indicators IV: Nonfermentative Bacilli

	SIR ^a										IR ^a			
	# ^a	% ^a	p10	p25	p50	p75	p90	# ^a	% ^a	p10	p25	p50	p75	p90
<i>Pseudomonas aeruginosa</i>														
cultures	15													
Carbapenems: Meropenem/imipenem (carbapenems)	12	80.0	0.0	100.0	100.0	100.0	100.0	4	33.3	0.0	0.0	50.0	50.0	100.0
Cephalosporins: Ceftazidim (anti-pseudom 3G ceph)	13	86.7	66.7	83.3	100.0	100.0	100.0	4	30.8	0.0	0.0	25.0	50.0	100.0
Polymyx.: Colistin (polymixins)	4	26.7	0.0	0.0	0.0	33.3	100.0	0	0.0	0.0	0.0	0.0	0.0	0.0
Penicillins: Piperacillin/ticarcillin (anti-pseudom. penic.)	5	33.3	0.0	0.0	25.0	58.3	100.0	0	0.0	0.0	0.0	0.0	0.0	0.0
Penicillins: Piperacillin/ticarcillin + enzyme inhibitor	12	80.0	0.0	58.3	100.0	100.0	100.0	2	16.7	0.0	0.0	0.0	50.0	50.0
<i>Acinetobacter baumannii</i>														
cultures	2													
Carbapenems: Meropenem/imipenem (carbapenems)	2	100.0	100.0	100.0	100.0	100.0	100.0	0	0.0	0.0	0.0	0.0	0.0	0.0
Cephalosporins: Ceftazidim (anti-pseudom 3G ceph)	0	0.0	0.0	0.0	0.0	0.0	0.0							
Polymyx.: Colistin (polymixins)	1	50.0	0.0	0.0	50.0	100.0	100.0	0	0.0	0.0	0.0	0.0	0.0	0.0
Penicillins: Piperacillin/ticarcillin (anti-pseudom. penic.)	1	50.0	0.0	0.0	50.0	100.0	100.0	1	100.0	100.0	100.0	100.0	100.0	100.0
Penicillins: Piperacillin/ticarcillin + enzyme inhibitor	0	0.0	0.0	0.0	0.0	0.0	0.0							

^a SIR=all Sensitive/Intermediate/Resistant antibiogram results, IR=all Intermediate/Resistant antibiogram results, #=aggregated total, %=#/100 cultures (SIR) or #/100 SIR results (IR),



Table 17: Missing Infection variables

variable	L1 ^a	L2 ^a	Ls ^a	Req ^a	# ^a	% ^a	p10	p25	p50	p75	p90
invasive device in 48 hours preceding infection	V	V	0	R	32	21.6	0.0	0.0	0.0	45.5	71.4
origin of bloodstream infection	V	V	0	O	5	10.6	0.0	0.0	0.0	0.0	83.3
antimicrobial treatment	V	V	0	O	113	76.4	0.0	0.0	90.9	100.0	133.3
Microorganism indicator	V	V	0	M	1	0.7	0.0	0.0	0.0	0.0	1.4
total infection variables	V	V	0	O	151	24.5	0.0	0.0	25.0	30.1	44.5

^a L1= level 1 variable (denominator-based surveillance) ; L2= level 2 variable (patient-based surveillance) ; L2s= level 2 suboption (0=basic level 2 variables a=extra patient admission and day by day variables, b=central vascular catheter follow-up, c=antimicrobial treatment follow-up); Req: M=mandatory, R=Required, O=Optional #=number of missing variables; %=# / 100 eligible records



Hospital (all) :
2888 patients

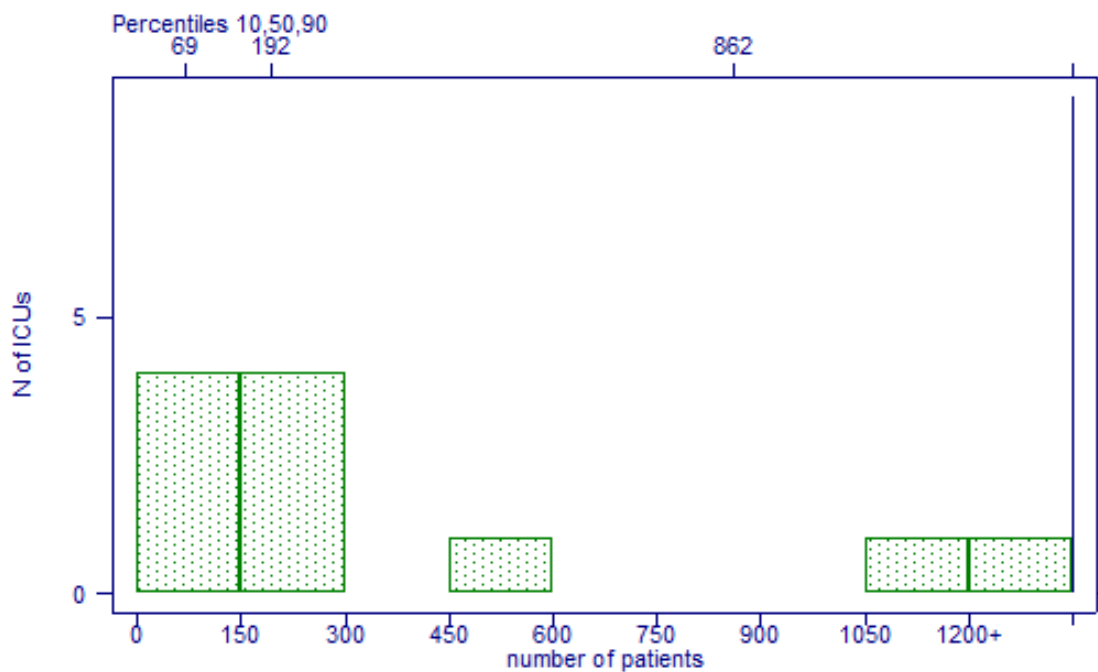


Figure 1: Distribution: number of patients

Hospital (all) :
7.3 days

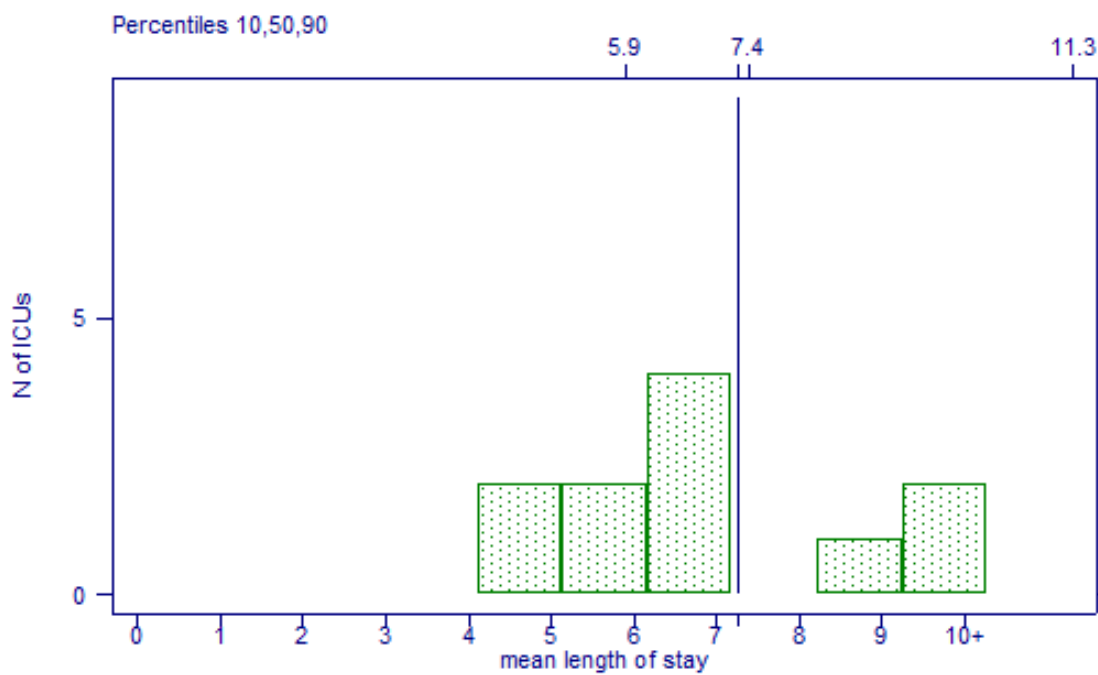


Figure 2: Distribution: mean length of stay



Hospital (all) :
3 NP/1000 patientdays (95% CI 2.3 - 3.8)

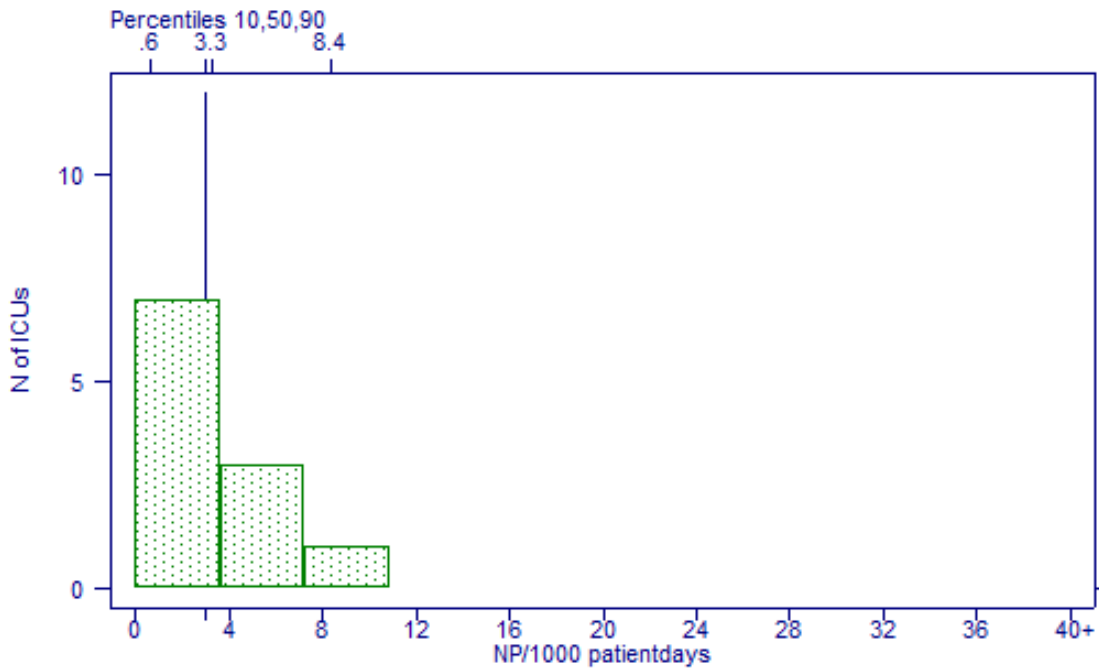


Figure 3: Distribution: $P \geq D3$ (NP) / 1000 patientdays

Hospital (all) :
6.4 NPs, ID2, all / 1000 IDdays (95% CI 4.5 - 8.8)

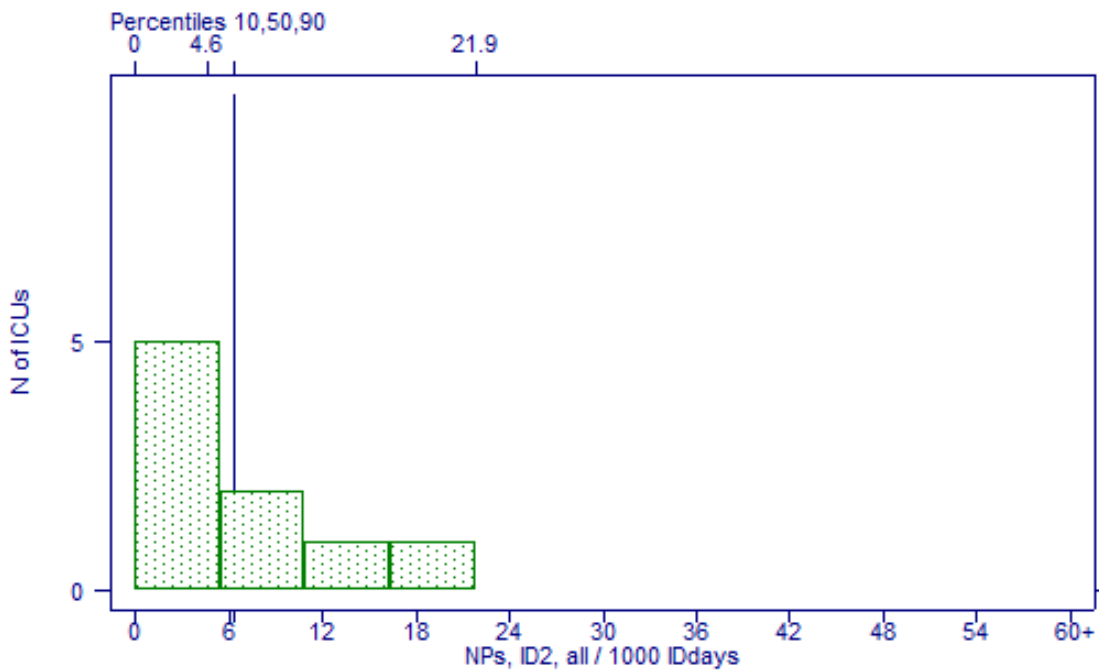


Figure 4: Distribution: NPs, ID2, all / 1000 IDdays ; NPs, with intubation in 2 days before onset of NP, all episodes / 1000 intubation days



Hospital (all) :
3 NPs, ID2, 1st / 1000 IDdays bef 1st NP (95% CI 1.2 - 6.3)

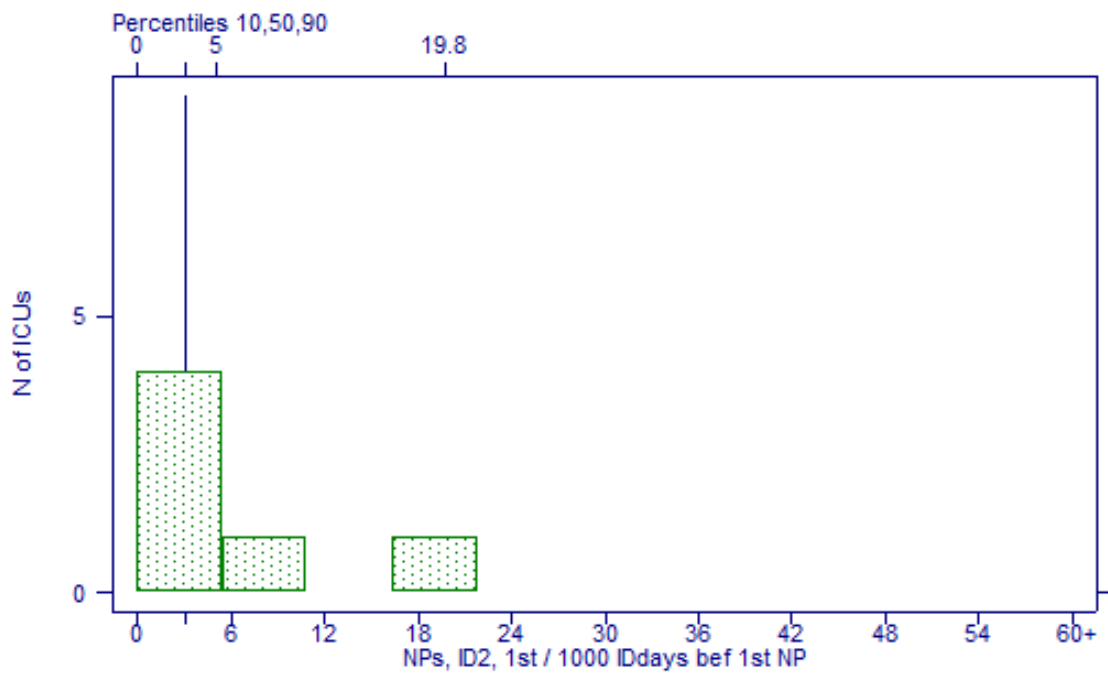


Figure 5: Distribution: NPs, ID2, 1st / 1000 IDdays bef 1st NP ; NPs, 1st episode only, with intubation in 2 days before onset of NP / 1000 intubation days



Hospital (all) :
2.2 Bs \geq D3 (NBs) / 1000 patientdays (95% CI 1.6 - 3)

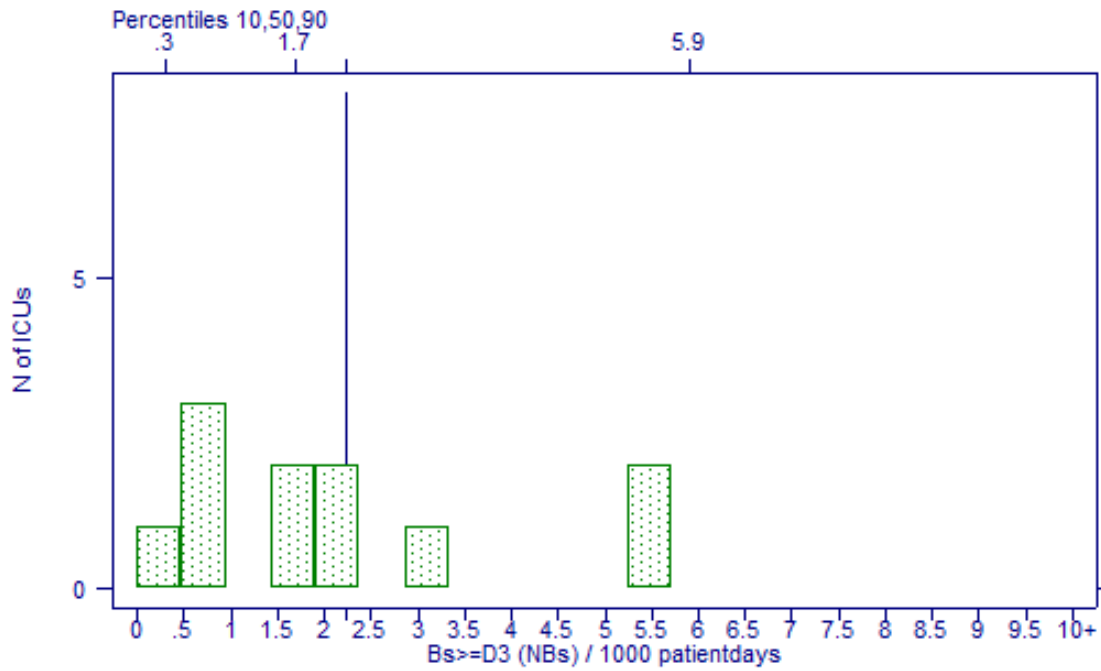


Figure 6: Distribution: Bs \geq D3 (NBs) / 1000 patientdays

Hospital (all) :
2.3 NBs, ID2, all / 1000 IDdays (95% CI 1.5 - 3.2)

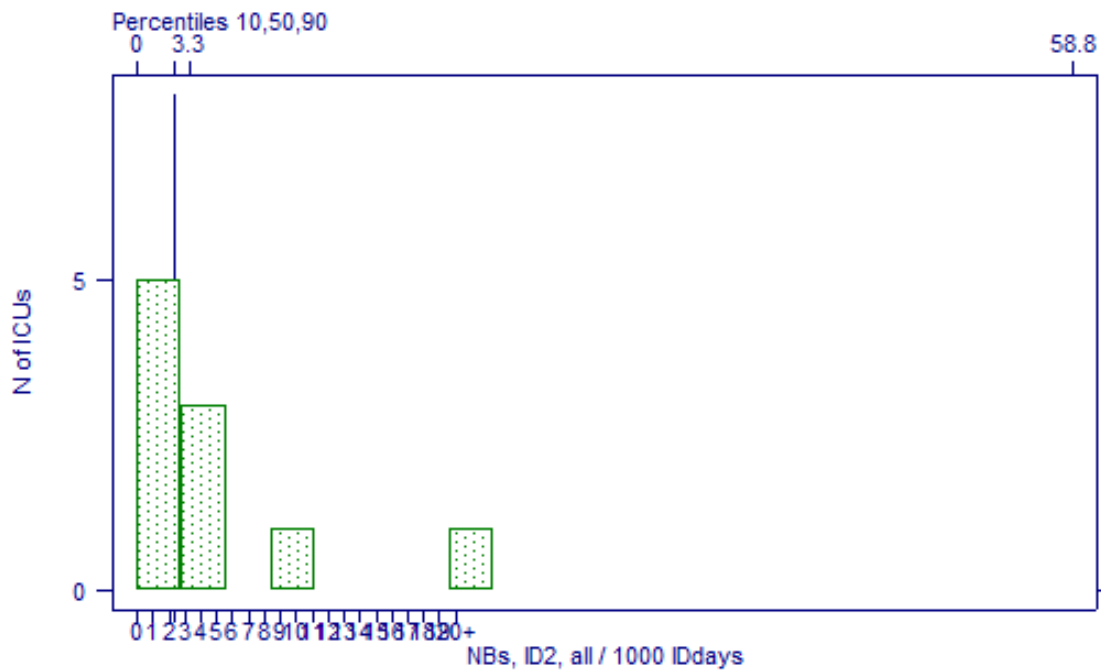


Figure 7: Distribution: NBs, with catheter use in 2days preceding onset of infection, all / 1000 IDdays ; NBs, with catheter use in 2days preceding onset of infection, all episodes / 1000 catheterdays



Hospital (all) :
1.1 NBs, ori=(cat/un) / 1000 patientdays (95% CI .7 - 1.7)

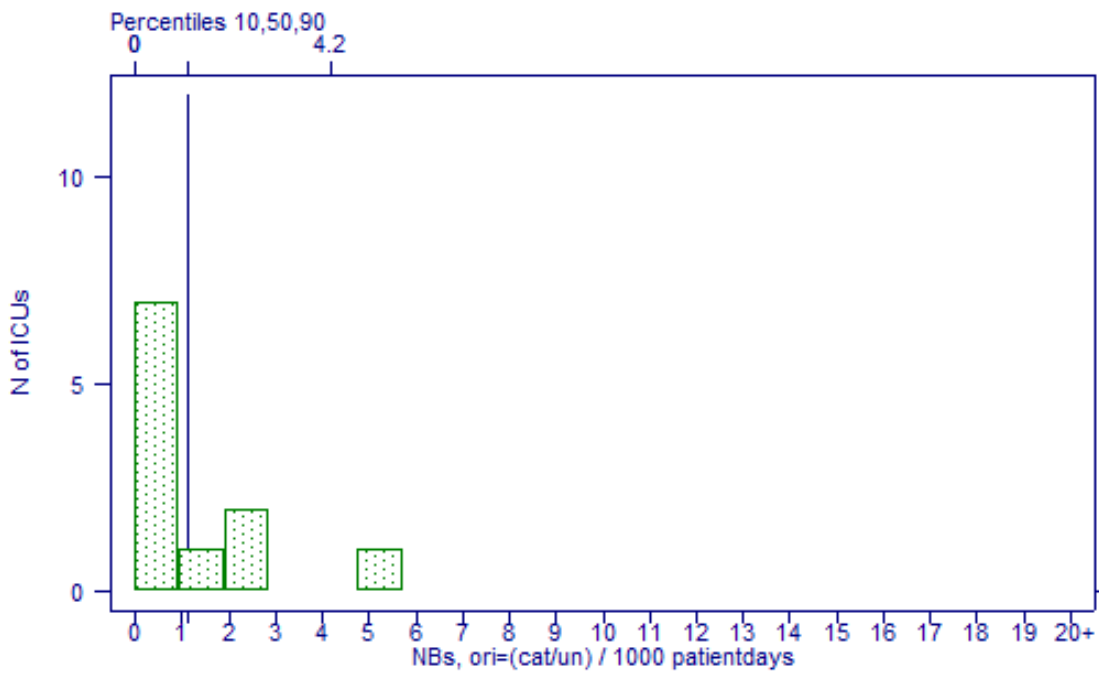


Figure 8: Distribution: NBs, ori=cat/un / 1000 patientdays ; primary NBs / 1000 patientdays

Hospital (all) :
1.2 NBs, (ori=cat/un,ID2) / 1000 IDdays (95% CI .7 - 2)

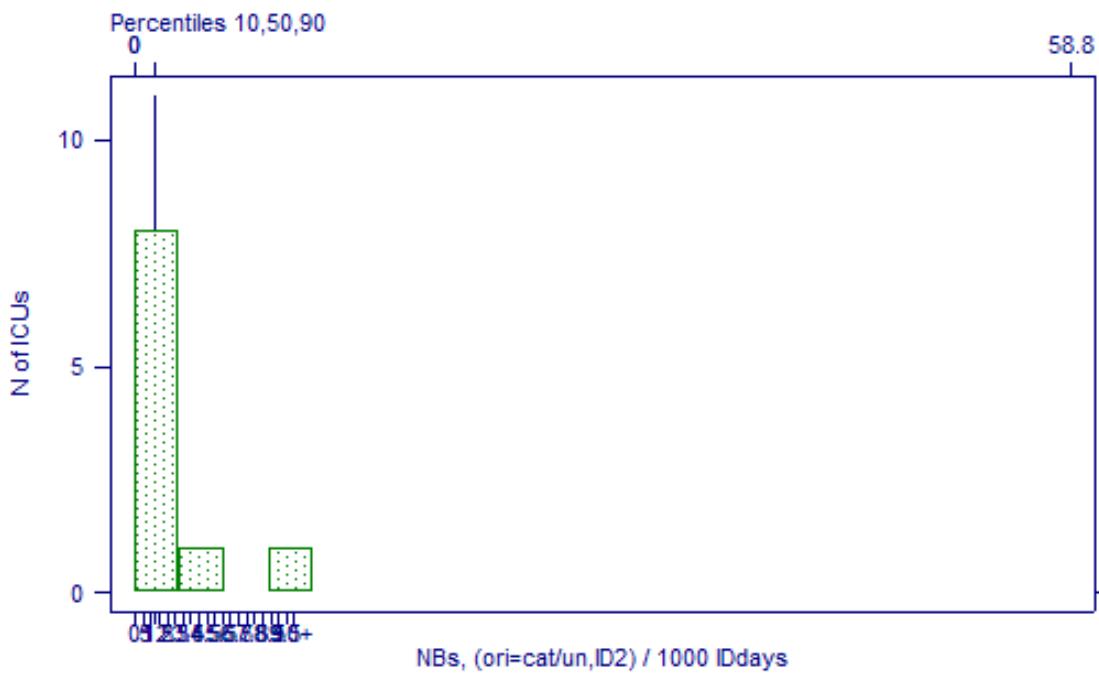


Figure 9: Distribution: NBs, (ori=cat/un,ID2) OR (ori=cat) / 1000 IDdays ; catheter associated NBs / 1000 catheterdays (CDC)



Hospital (all) :
.2 NBs, ori=cat, 1st / 1000 IDdays bef 1st NB (95% CI 0 - 1.1)

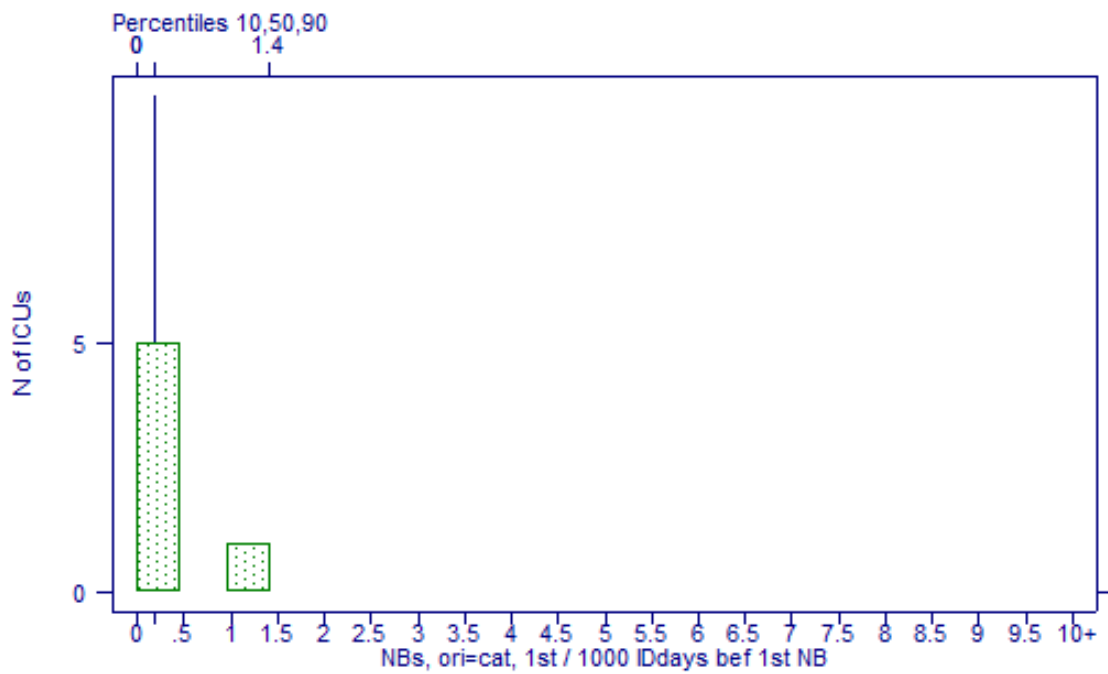


Figure 10: Distribution: NBs, ori=cat, 1st / 1000 IDdays bef 1st NB ; definite catheter associated NBs, 1st episodes only / 1000 catheterdays



Hospital (all) :
1.6 NUs / 1000 patientdays (95% CI 1.1 - 2.3)

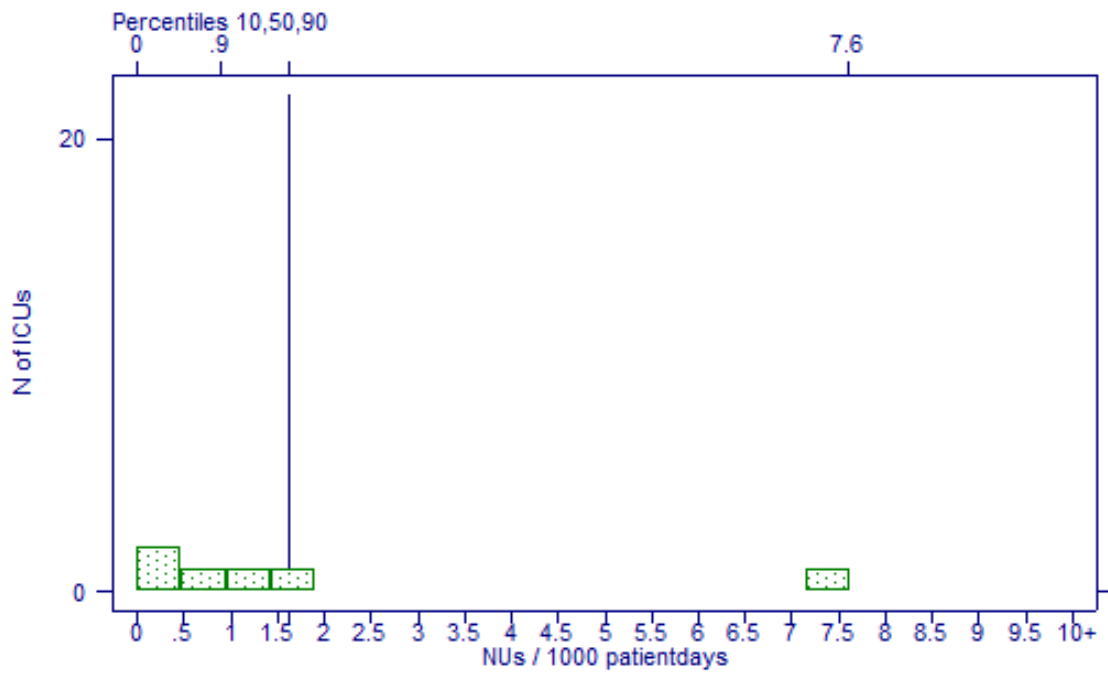


Figure 11: Distribution: $Us_{\geq D3}$ (NU) / 1000 patientdays ; NUs / 1000 patientdays

Hospital (all) :
2.2 NUs, ID2 / 1000 ID days (95% CI 1.2 - 3.5)

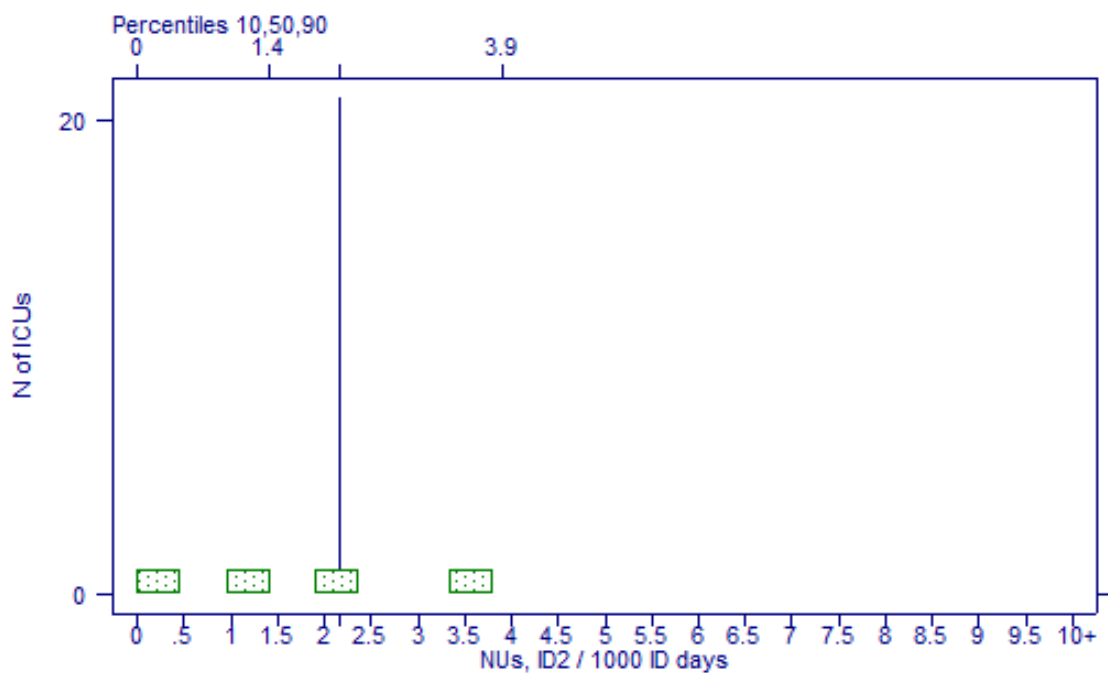


Figure 12: Distribution: NUs, ID2 / 1000 ID days ; catheter associated NUs / 1000 urinary catheterdays

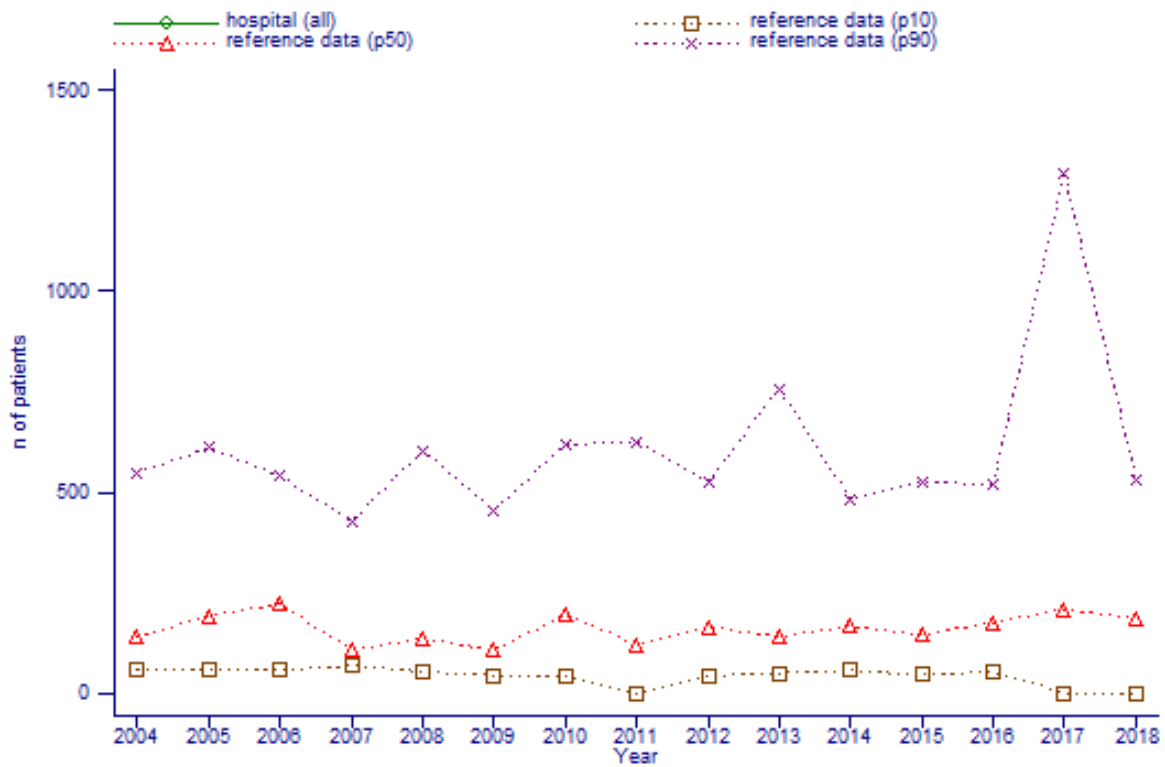


Figure 13: Evolution: Number of patients

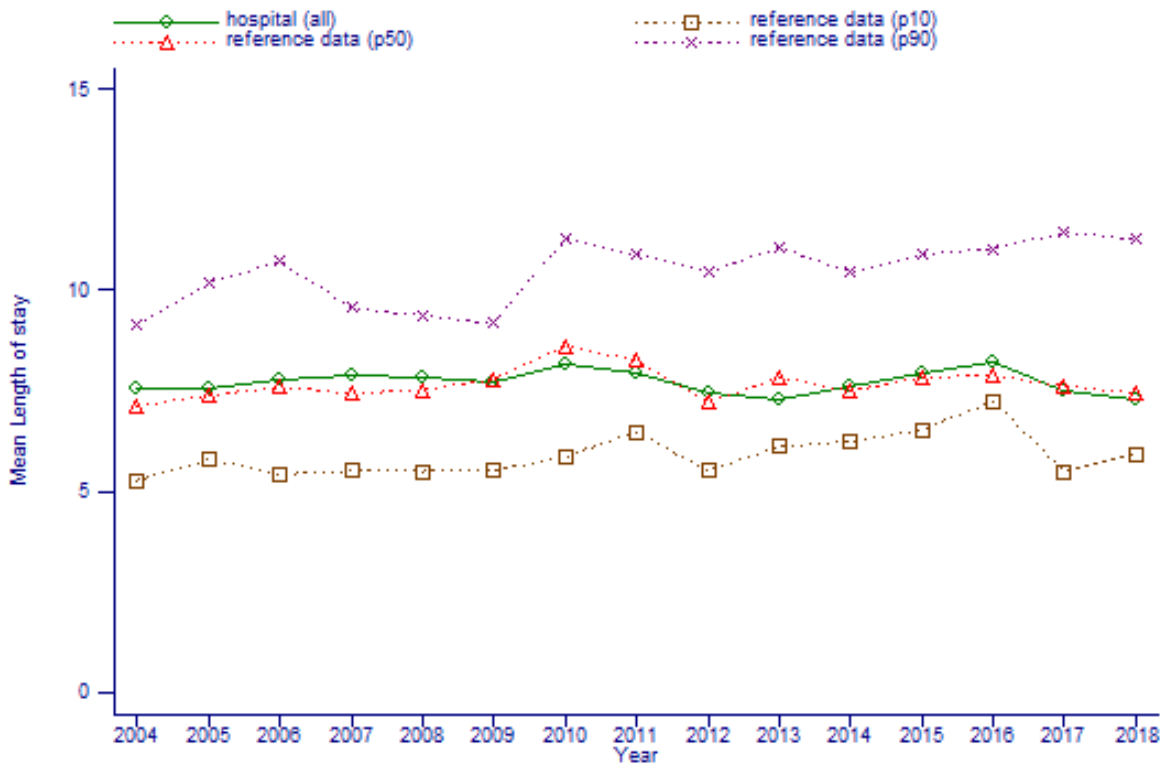


Figure 14: Evolution: Mean Length of stay

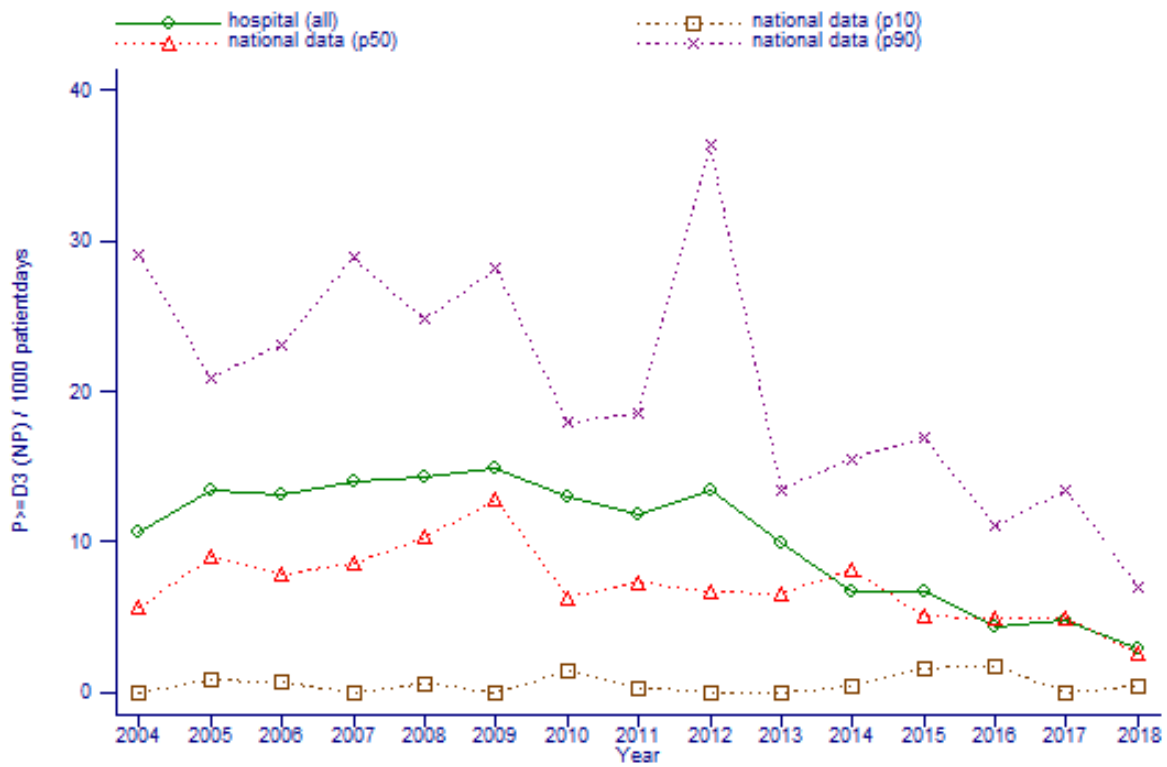


Figure 15: Evolution: $P \geq D3$ (NP) / 1000 patientdays

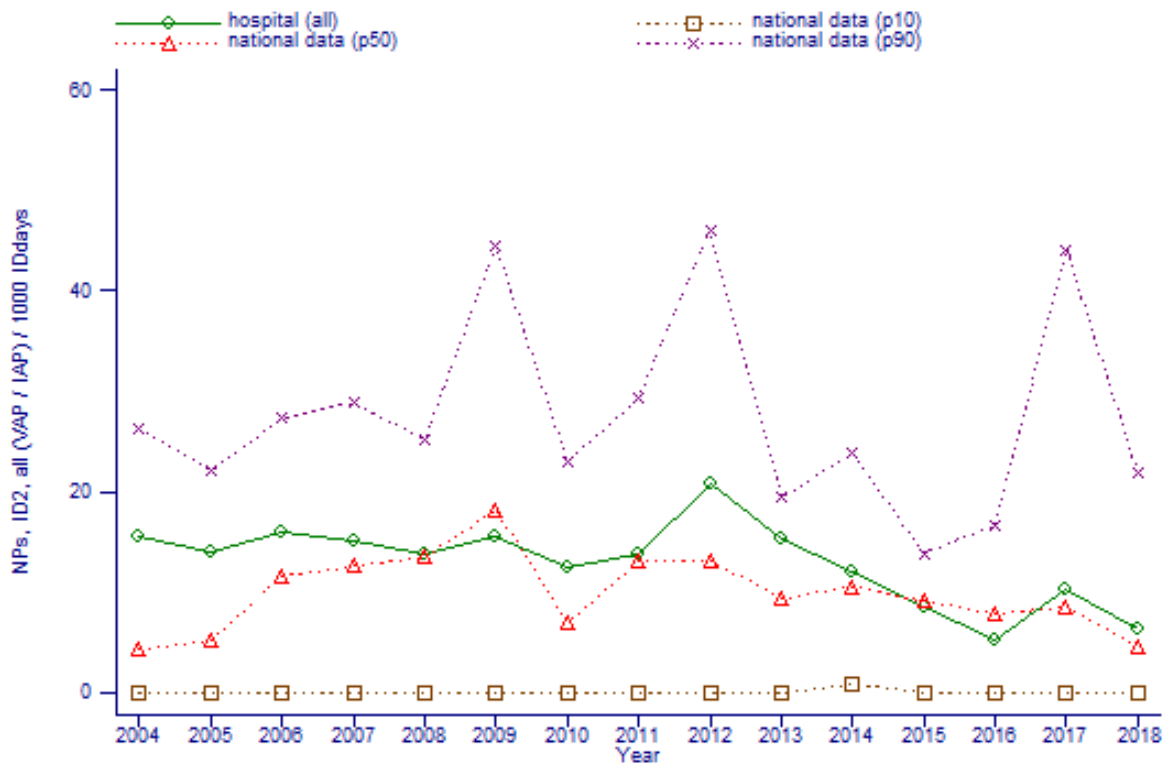


Figure 16: Evolution: NPs, ID2, all / 1000 IDdays ; NPs, with intubation in 2 days before onset of NP, all episodes / 1000 intubation days

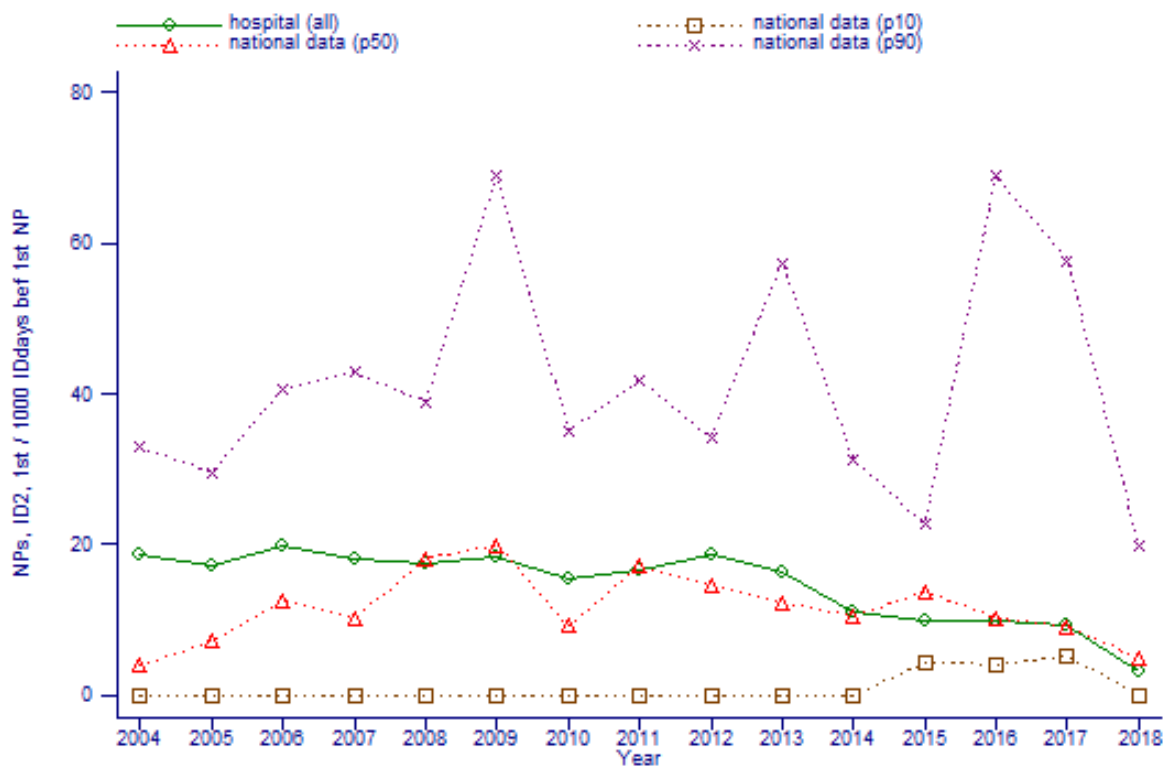


Figure 17: Evolution: NPs, ID2, 1st / 1000 IDdays bef 1st NP ; NPs, with intubation in 2 days before onset of NP, 1st episode only / 1000 intubation days

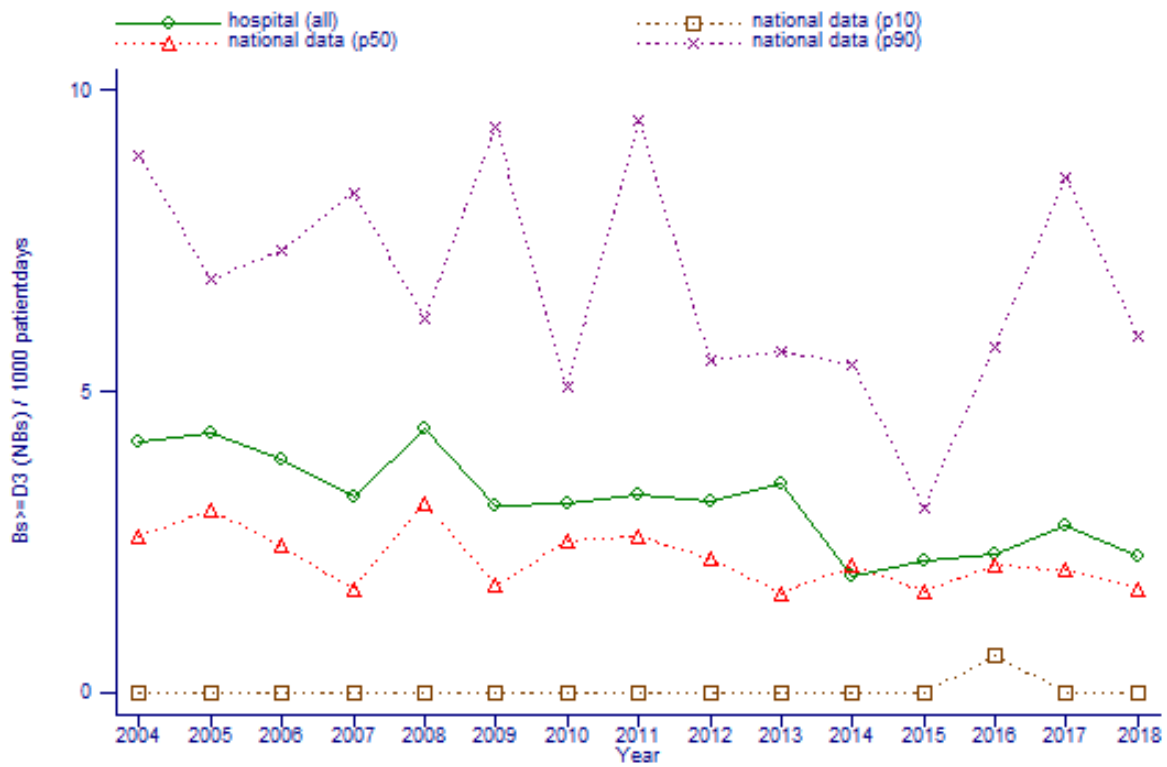


Figure 18: Evolution: Bs ≥ D3 (NBs) / 1000 patientdays

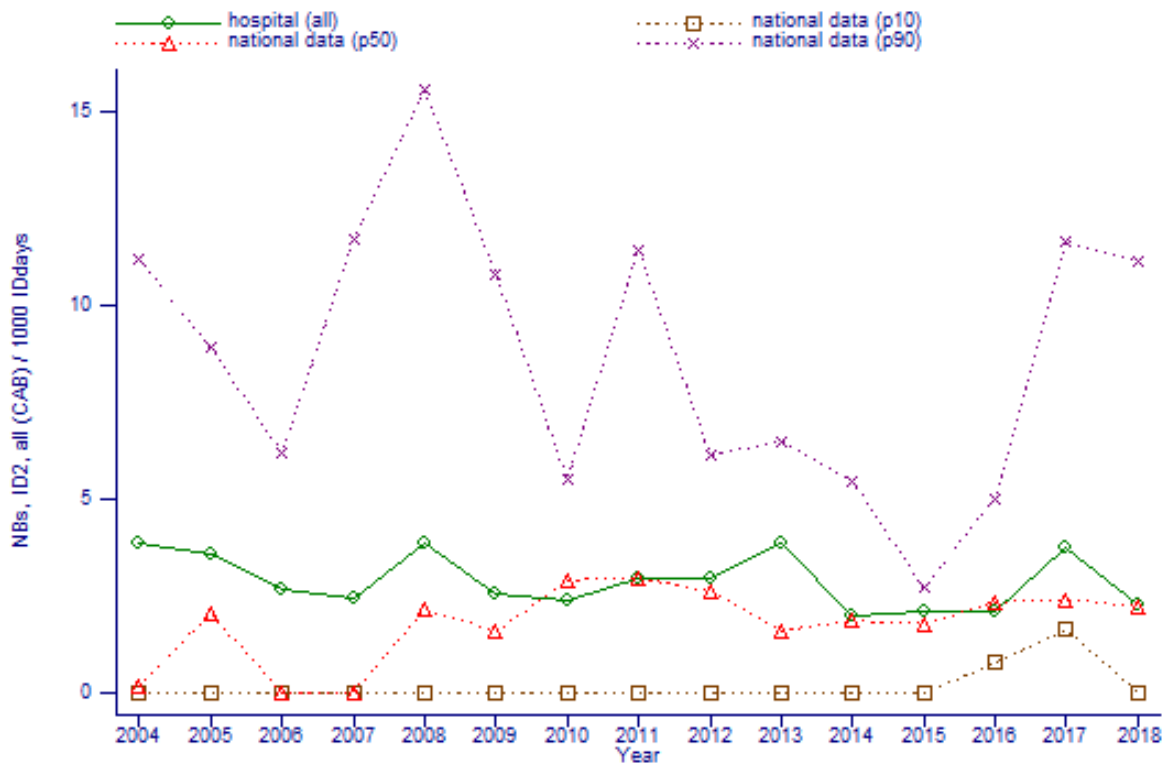


Figure 19: Evolution: NBs, ID2, all / 1000 IDdays ; NBs, with catheter use in 2days preceding onset of infection, all episodes / 1000 catheterdays

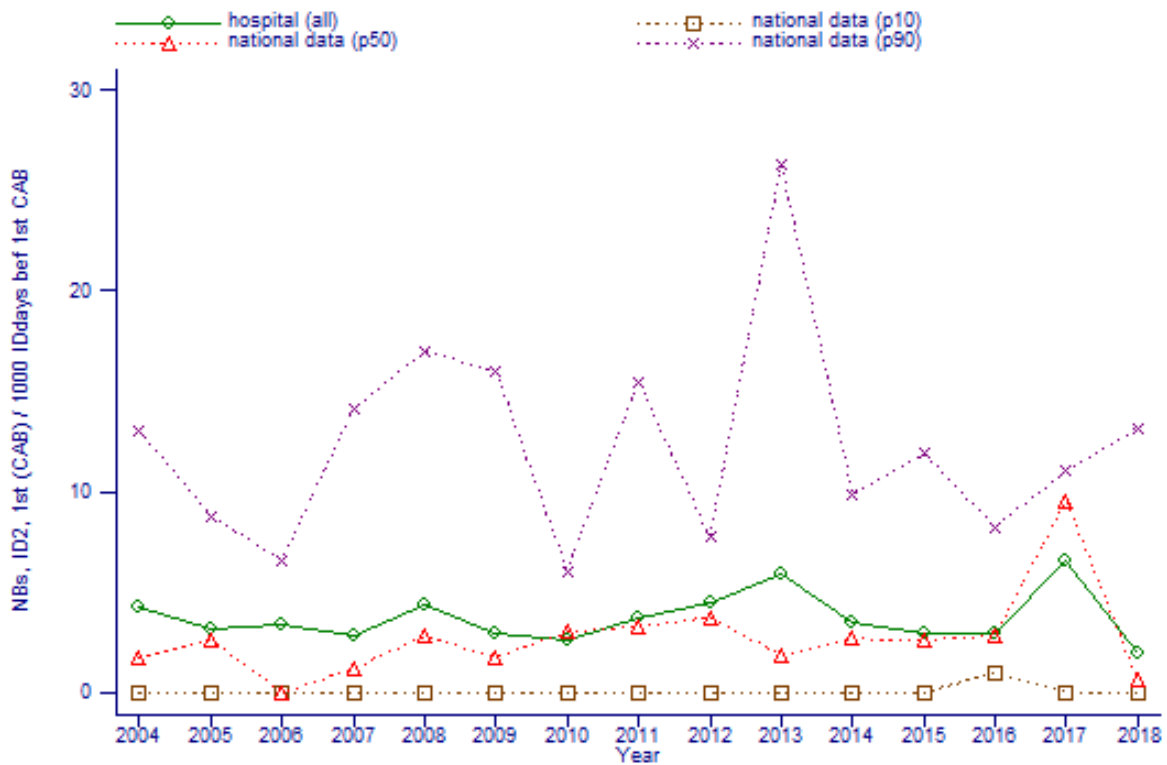


Figure 20: Evolution: NBs, ID2, 1st / 1000 IDdays bef 1st CAB; NBs, with catheter use in 2days preceding onset of infection, 1st episodes only / 1000 catheterdays

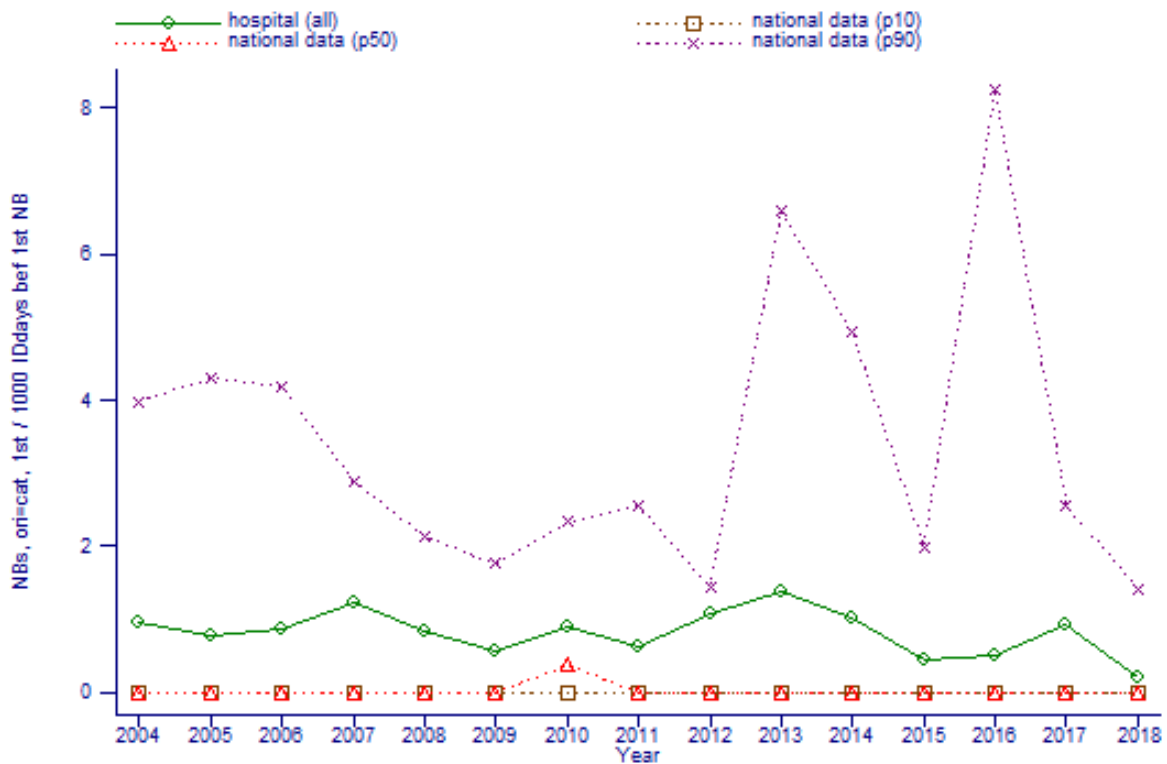


Figure 21: Evolution: NBs, ori=cat, 1st / 1000 IDdays bef 1st NB ; definite catheter associated NBs, 1st episodes only / 1000 catheterdays

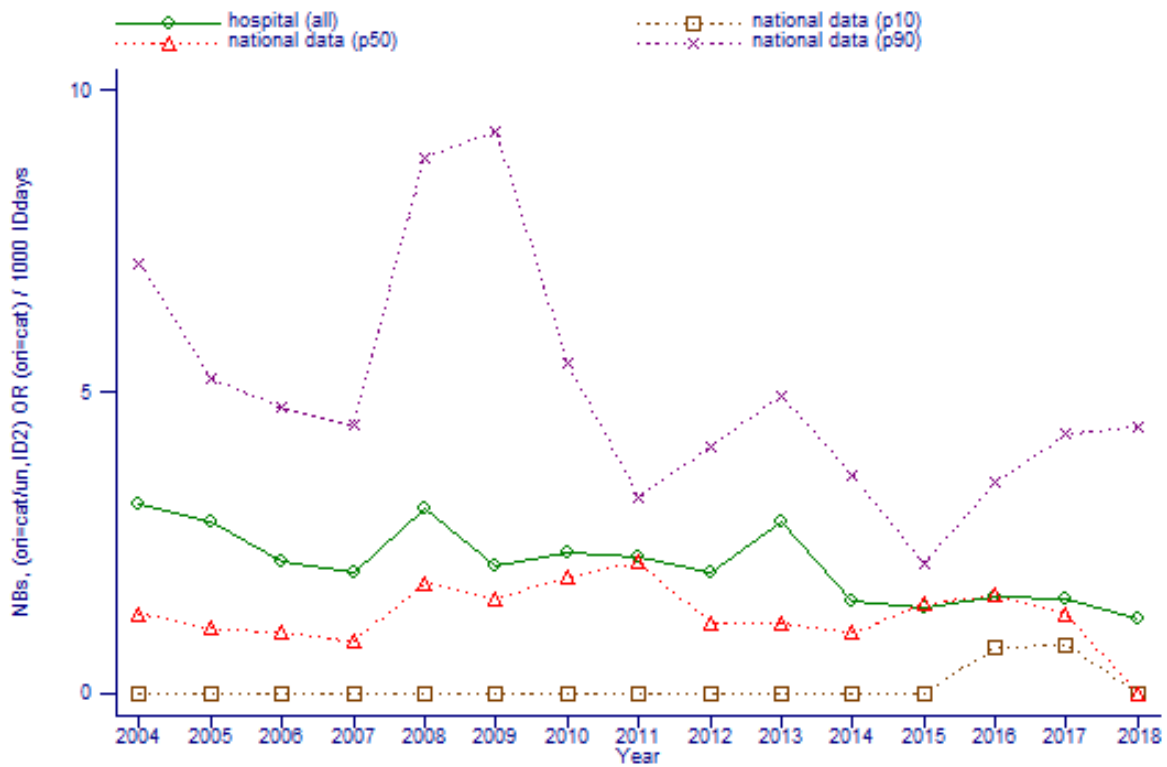


Figure 22: Evolution: NBs, (ori=cat/un,ID2) OR (ori=cat) / 1000 IDdays ; catheter associated NBs / 1000 catheterdays (CDC)

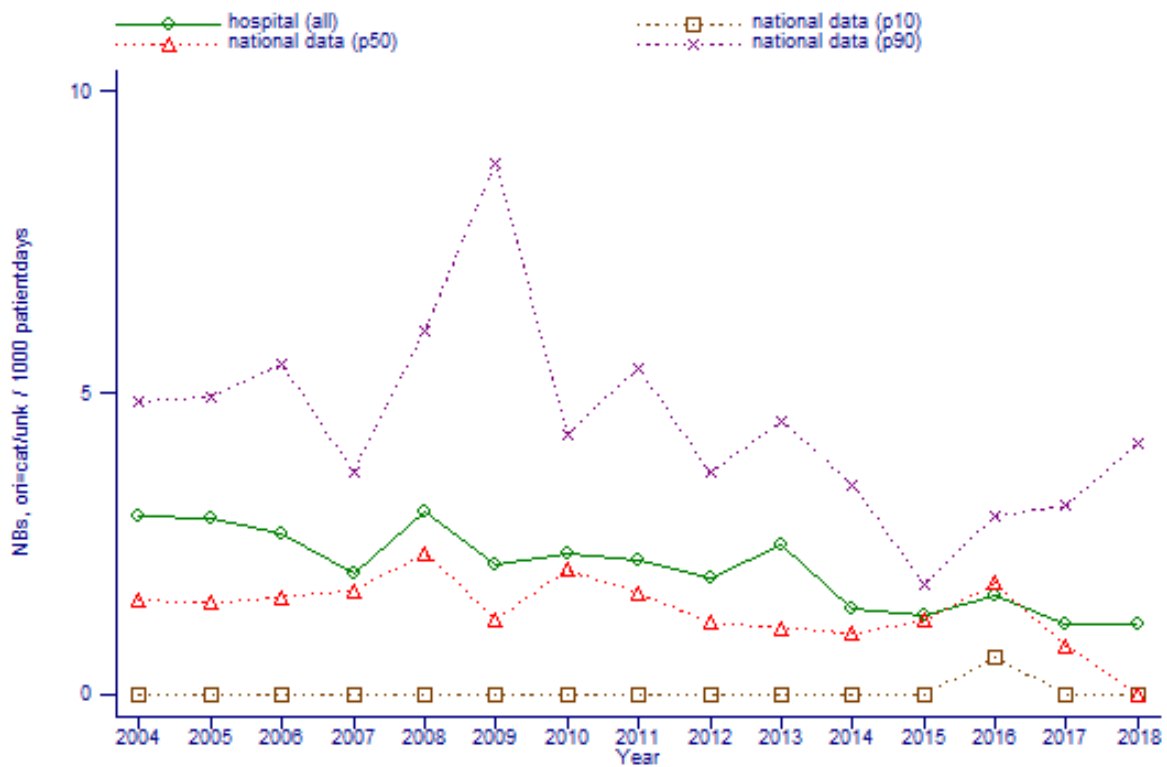


Figure 23: Evolution: NBs, ori=cat/unk / 1000 patientdays ; primary NBs / 1000 patientdays

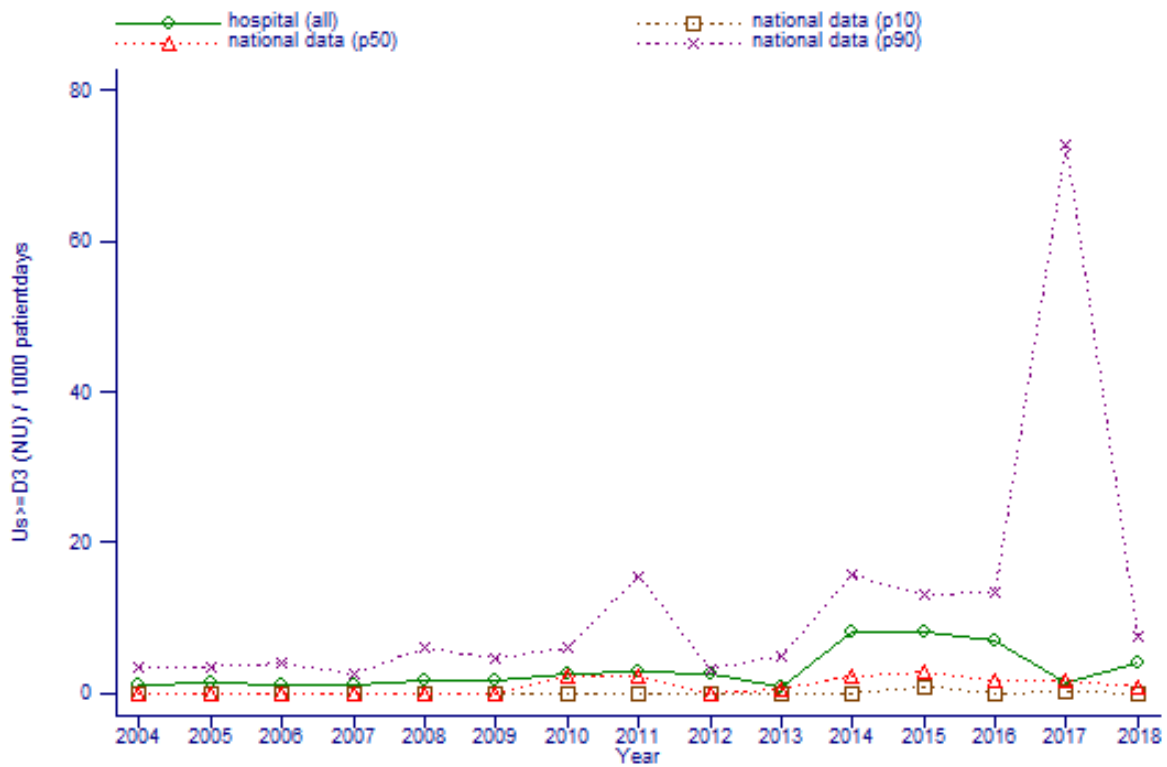


Figure 24: Evolution: $Us_{\geq D3}$ (NU) / 1000 patientdays ; NUs / 1000 patientdays

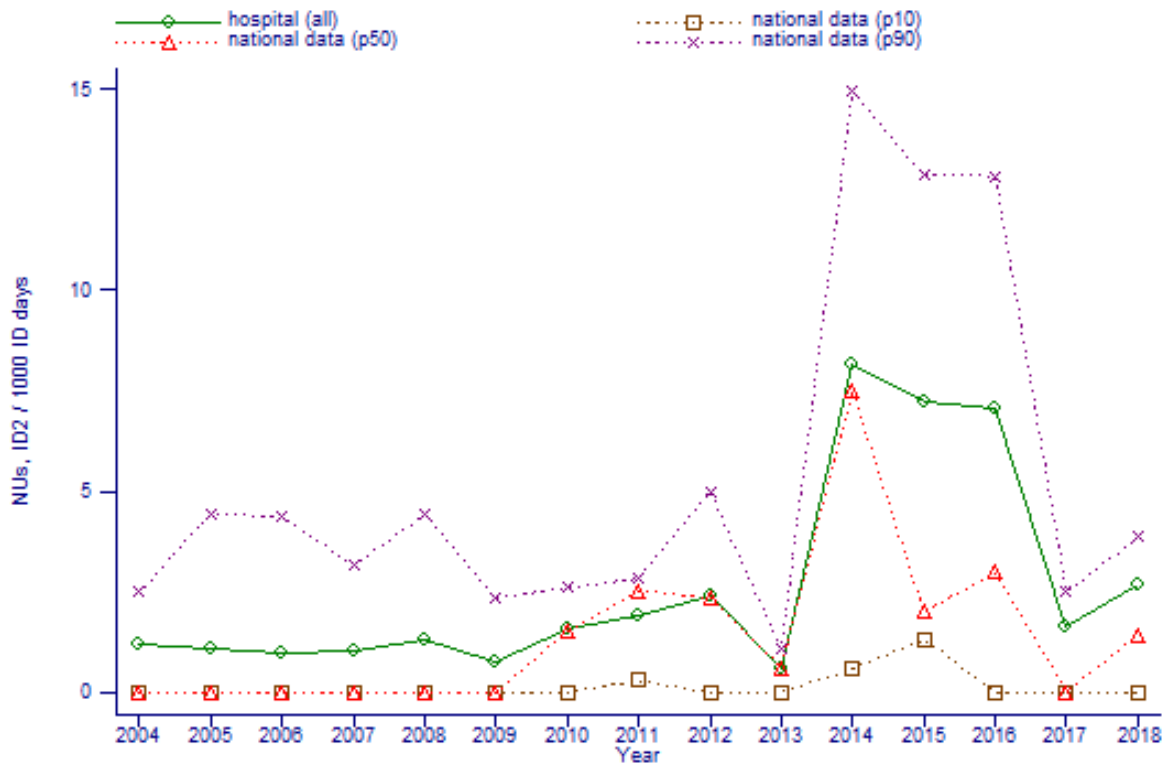


Figure 25: Evolution: NUs, ID2 / 1000 ID days ; catheter associated NUs / 1000 urinary catheterdays