

SCIENTIFIC DIRECTORATE CHEMICAL AND PHYSICAL HEALTH RISKS

A person with long hair, seen from behind, stands in a grassy field with their arms outstretched. The background shows rolling hills under a clear sky. The entire scene is overlaid with a semi-transparent green filter.

Dr. Ir. Joris Van Loco
14th of June 2021

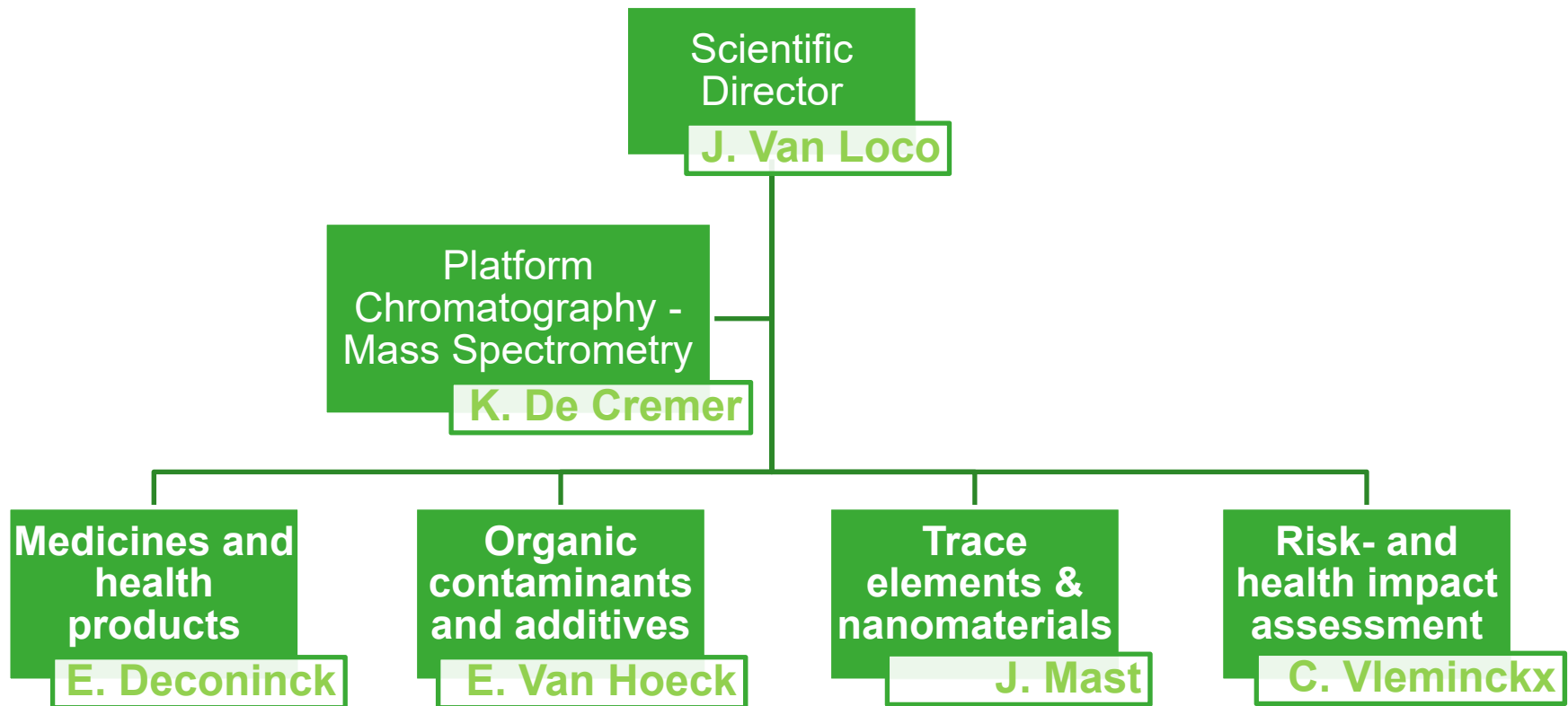
Chemical and Physical Health Risks

Mission

We support the policy by conducting scientific research on possible harmful effects of chemicals and physical agents on public health and hereby increase the well-being of everyone



Chemical and Physical Health Risks



Activities



Food



Environment
Consumer Products



Medicines &
Health Products

Activities



Food



Environment
Consumer Products



Medicines &
Health Products

Pharmaceuticals

Medical devices

Cosmetics

Nanoparticles

Toxins

Food Additives

Pesticides

Materials in
contact with food

Trace elements

Contaminants

Radiation

Air pollution

Reference Laboratory

Food Safety

- Food contact Materials
- Trace Elements
- Pesticides
- Process Contaminants
- Environmental Contaminants
- Nano Materials

Official Medicines Control Laboratory

- Analysis of pharmaceuticals

Official Cosmetics Control Laboratory



BELAC Accreditation ISO 17025
EDQM Accreditation ISO 17025

Policy Support



Food



Environment
Consumer Products



Medicines &
Health Products

Research
Reference laboratory
Expertise

Policy Support



Food



Environment
Consumer Products



Medicines &
Health Products

Research
Reference laboratory
Expertise



afmps
fagg



European Food Safety Authority



 sciensano

.be

Policy Support



Food

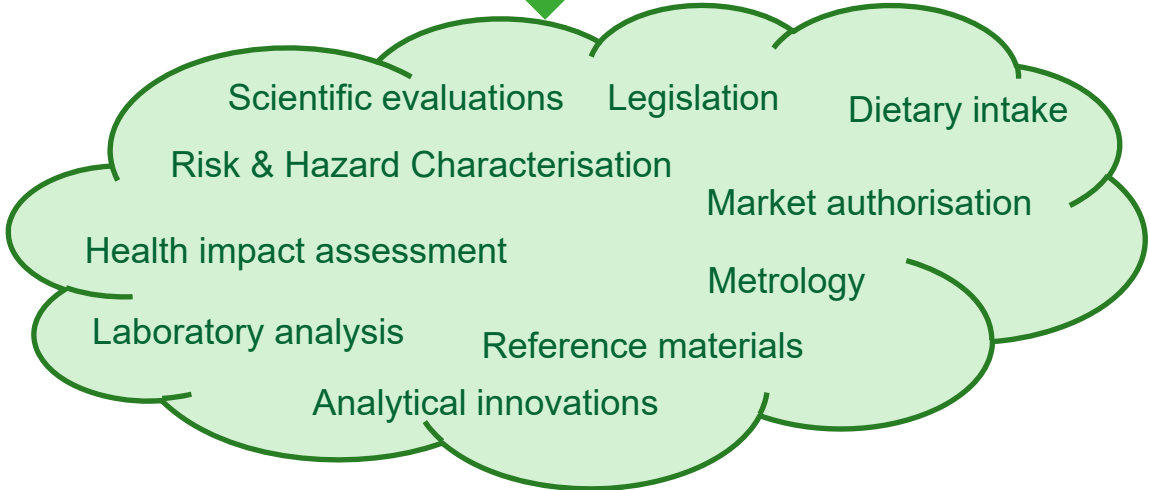


Environment
Consumer Products



Medicines &
Health Products

Research
Reference laboratory
Expertise



afmps
fagg

efsa
European Food Safety Authority

edqm
European Directorate for the
Quality of Medicines & HealthCare

BE Universities as Partner

37 long term activities
21 national projects
10 international projects



BE Universities as Partner

37 long term activities
21 national projects
10 international projects



Screening of possible endocrine
disrupting chemicals in food and
dietary intake assessment for the
Belgian population
VUB

Monitoring and mitigating environmental
health inequalities
UCL, ULB and UHasselt

National reference
laboratory for environmental
and process contaminants
ULiège

BE Universities as Partner

37 activities
21 national projects
10 international projects

11 teaching assignments given @
6 different universities



BE Universities as Partner

37 activities
21 national projects
10 international projects

11 teaching assignments given @
6 different universities

8 PhD students and visiting scientists from
5 different universities



Research Infrastructures

- Research Infrastructures
 - Food (see metrofood)
- Platforms



METROFOOD-RI - *Infrastructure for promoting Metrology in Food and Nutrition* is a new distributed Research Infrastructure aimed to promote scientific excellence in the field of food quality and safety.

www.metrofood.eu

Scientific Directorate *Chemical and physical health risks*

Contact

Scientific Director

Platform chromatography and mass spectrometry

Medicines and health products

Organic contaminants and additives

Trace elements and nanomaterials

Risk- and health impact assessment

Joris.VanLoco@sciensano.be

Koen.DeCremer@sciensano.be

Eric.Deconinck@sciensano.be

Els.VanHoeck@sciensano.be

Jan.Mast@sciensano.be

Christiane.Vleminckx@sciensano.be

Webpage

<https://www.sciensano.be/en/about-sciensano/sciensanos-organogram/chemical-and-physical-health-risks>